

KABR DSD vs. DPR.KA.MS.V03B  $\geq 50\%$  bins above threshold  
 Orbit: 1451 -- GR Start Time: 2014-05-31 22:34:54

DPRKA-GR Reflectivity difference statistics (dBZ) - GR Site: KABR

Orbit: 1451 Version: V03B Swath Type: MS

DPR time = 2014-05-31 22:35:35 GR start time = 2014-05-31 22:34:54

Required percent of above-threshold DPR and GR bins in matched volumes >= 50%

Thresholding by reflectivity cutoffs. Using GR RR field.

Mean Reflectivity Statistics grouped by fixed height levels (km):

Vert. Layer	Any Rain Type		Stratiform		Convective		Dataset Statistics		
	DPR-GR	NumPts	DPR-GR	NumPts	DPR-GR	NumPts	AvgDist	DPRMaxZ	GRMaxZ
1.0	-1.108	148	-1.113	128	-0.850	9	75.476	40.720	49.133
2.0	-1.030	165	-1.092	150	-1.000	7	79.157	40.720	49.821
3.0	-5.030	121	-5.154	116	-0.855	2	82.478	38.902	49.076 @ BB
4.0	-7.003	54	-7.003	54	-99.999	0	87.324	35.361	46.846 @ BB
5.0	-2.330	42	-2.330	42	-99.999	0	88.132	30.773	38.318
6.0	-0.604	24	-0.604	24	-99.999	0	91.112	24.319	26.343
7.0	-0.778	3	-0.778	3	-99.999	0	89.754	20.240	20.946

Mean Reflectivity Statistics grouped by proximity to Bright Band:

Surface type	Any Rain Type		Stratiform		Convective		Dataset Statistics		
	DPR-GR	NumPts	DPR-GR	NumPts	DPR-GR	NumPts	AvgDist	DPRMaxZ	GRMaxZ
Below	-1.090	220	-1.081	192	-0.885	13	75.727	40.720	49.133

Mean Drop Diameter (D0 / Dm in mm) Statistics grouped by fixed height levels (km):

Vert. Layer	Any Rain Type		Stratiform		Convective		Dataset Statistics		
	DPR-GR	NumPts	DPR-GR	NumPts	DPR-GR	NumPts	AvgDist	DPRMaxD0	GRMaxD0
1.0	0.144	137	0.155	128	-0.003	9	76.043	2.277	2.145
2.0	0.208	68	0.220	64	0.001	4	76.286	2.273	1.711

No above-threshold points at height 3.000

No above-threshold points at height 4.000

No above-threshold points at height 5.000

No above-threshold points at height 6.000

No above-threshold points at height 7.000

Mean Drop Diameter (D0 / Dm in mm) Statistics grouped by proximity to Bright Band:

Surface type	Any Rain Type		Stratiform		Convective		Dataset Statistics		
	DPR-GR	NumPts	DPR-GR	NumPts	DPR-GR	NumPts	AvgDist	DPRMaxD0	GRMaxD0
Below	0.166	205	0.177	192	-0.002	13	76.123	2.277	2.145

Mean Normalized Intercept Parameter ( log10(Nw) ) Statistics grouped by fixed height levels (km):

Vert. Layer	Any Rain Type		Stratiform		Convective		Dataset Statistics		
	DPR-GR	NumPts	DPR-GR	NumPts	DPR-GR	NumPts	AvgDist	DPRMaxNw	GRMaxNw
1.0	1.340	137	1.382	128	0.751	9	76.043	4.659	3.035
2.0	1.152	68	1.181	64	0.640	4	76.286	4.244	3.195

No above-threshold points at height 3.000

No above-threshold points at height 4.000

No above-threshold points at height 5.000

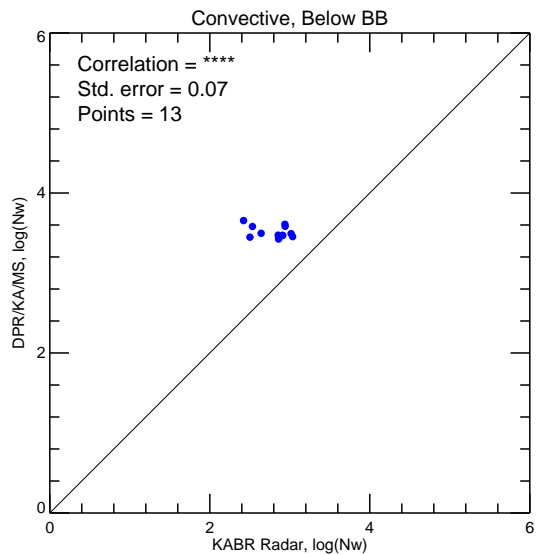
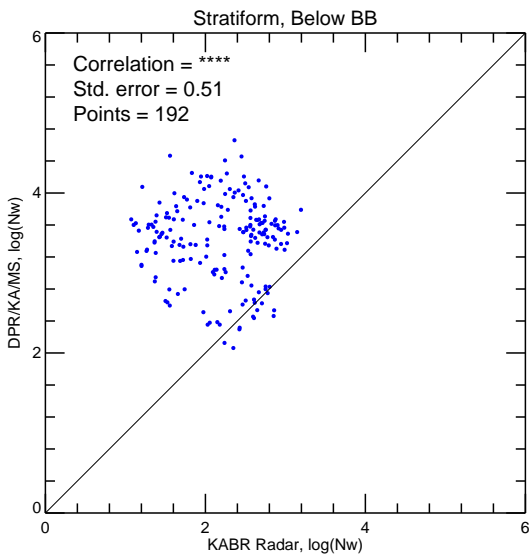
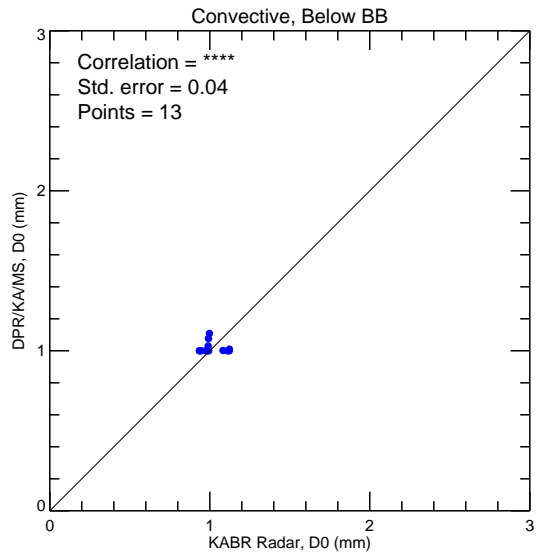
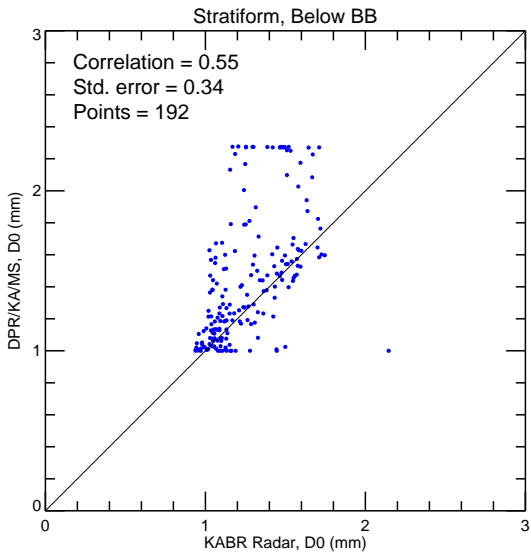
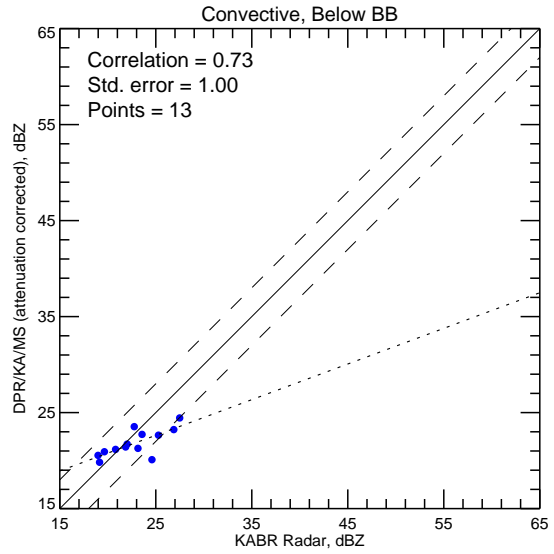
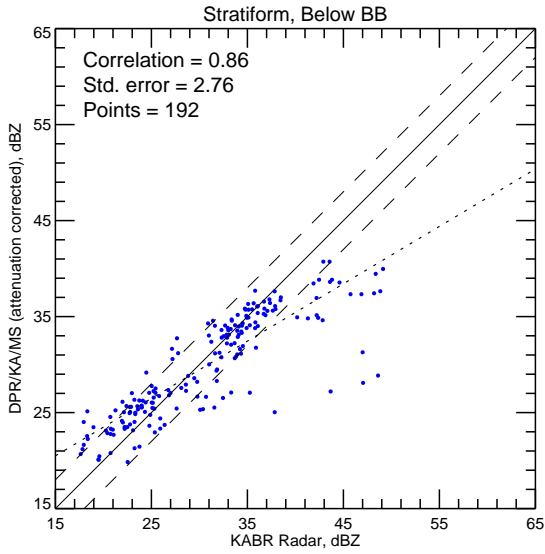
No above-threshold points at height 6.000

No above-threshold points at height 7.000

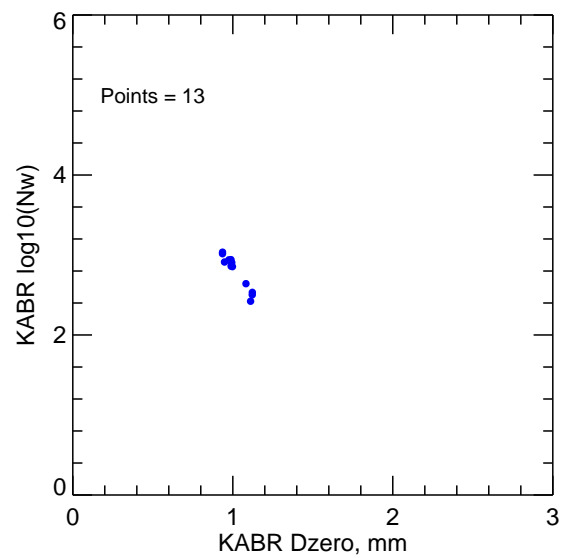
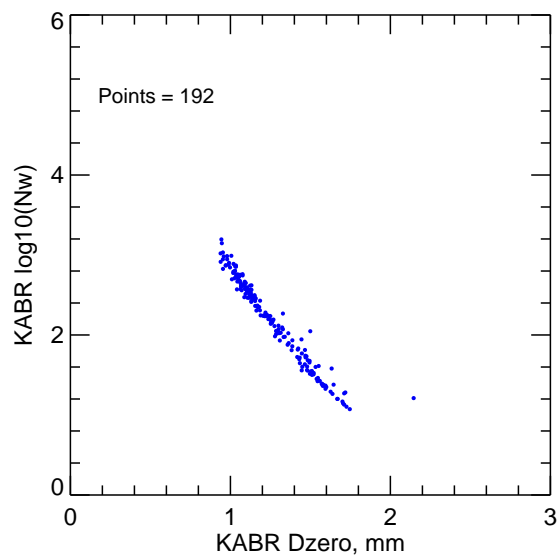
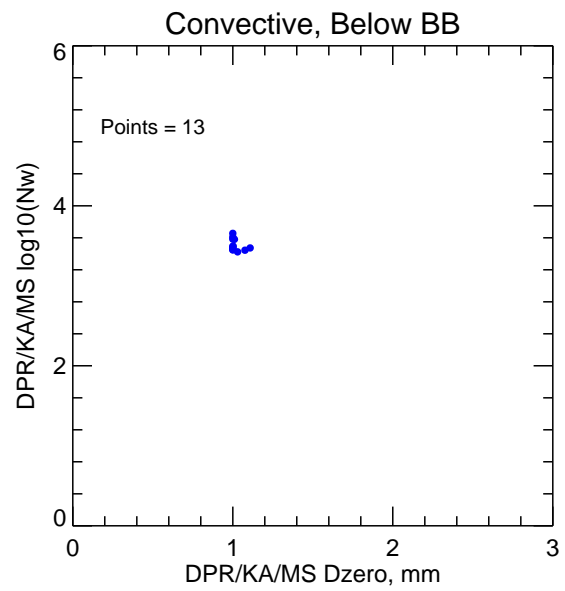
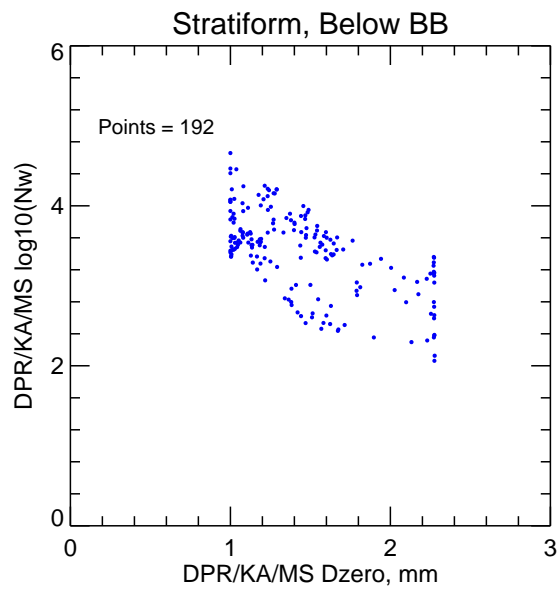
Mean Normalized Intercept Parameter ( log10(Nw) ) Statistics grouped by proximity to Bright Band:

Surface type	Any Rain Type		Stratiform		Convective		Dataset Statistics		
	DPR-GR	NumPts	DPR-GR	NumPts	DPR-GR	NumPts	AvgDist	DPRMaxNw	GRMaxNw
Below	1.276	205	1.313	192	0.718	13	76.123	4.659	3.195

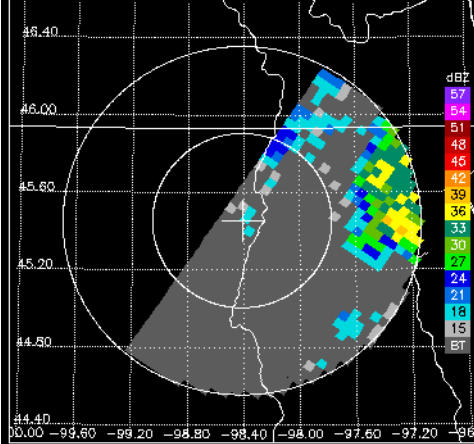
# KABR DSD vs. DPR.KA.MS.V03B >=50% bins above threshold



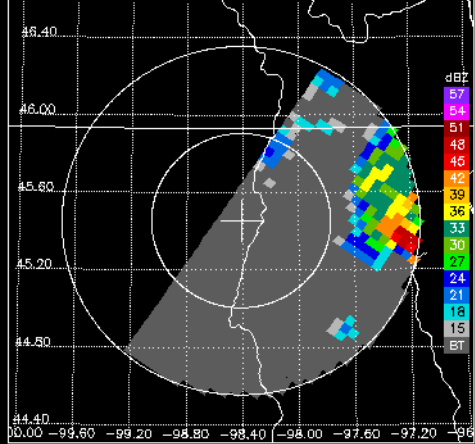
D0 vs.  $\log_{10}(Nw)$  for DPR.KA.MS.V03B and KABR  $\geq 50\%$  bins above threshold



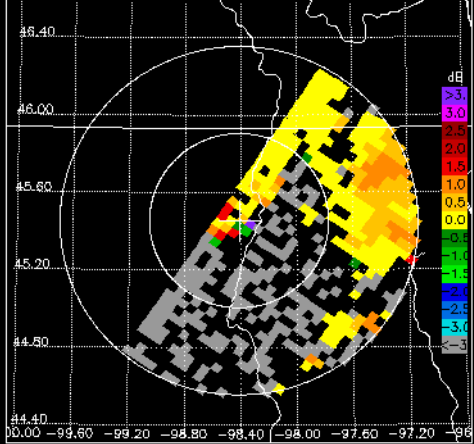
DPR/KA CZ, 0.5° sweep, all valid samples



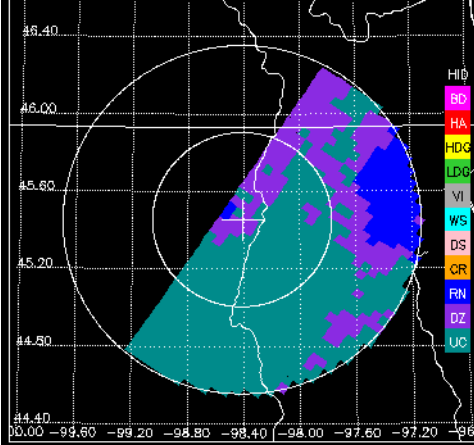
KABR CZ, 0.5° sweep, all valid samples



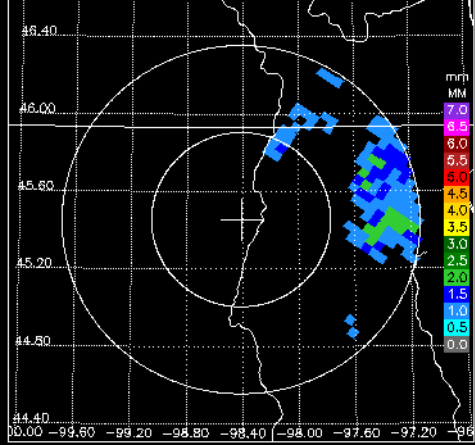
KABR DR, 0.5° sweep, all valid samples



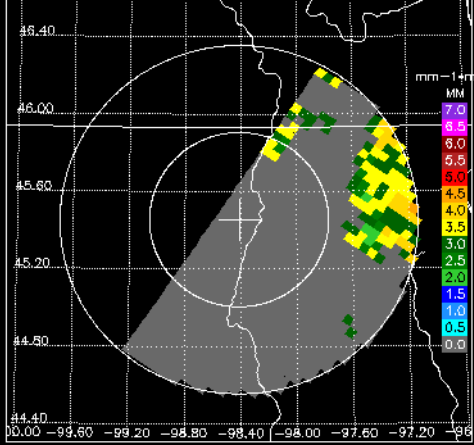
KABR FH, 0.5° sweep, ≥50% bins above threshold



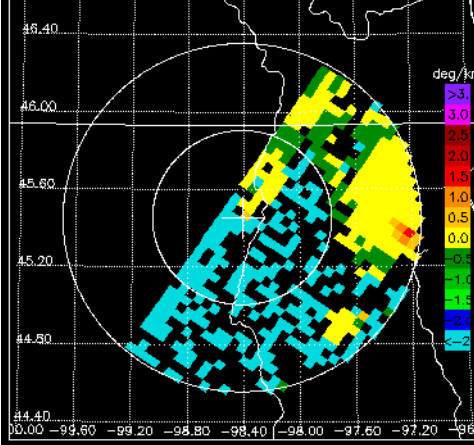
DPR/KA D0, 0.5° sweep, ≥50% bins above threshold



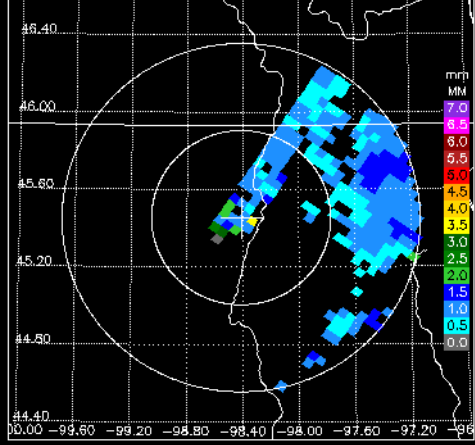
DPR/KA NW, 0.5° sweep, all valid samples



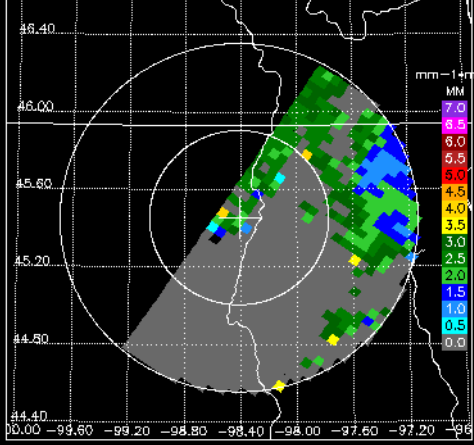
KABR KD, 0.5° sweep, all valid samples



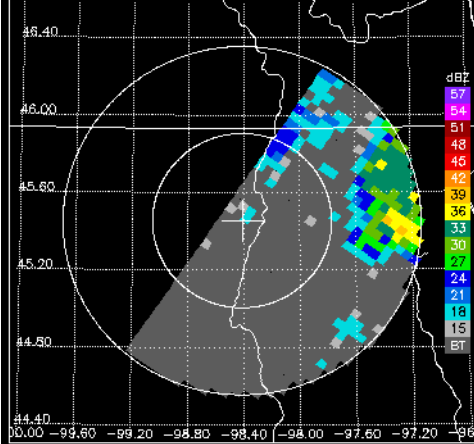
KABR D0, 0.5° sweep, all valid samples



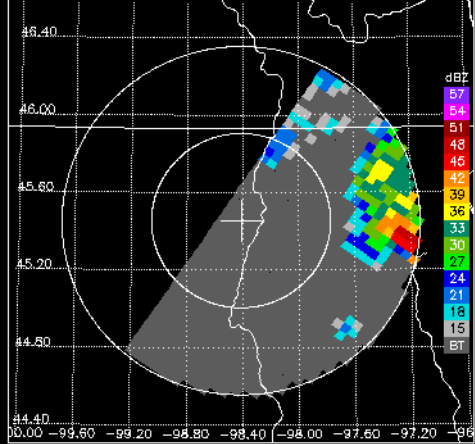
KABR NW, 0.5° sweep, all valid samples



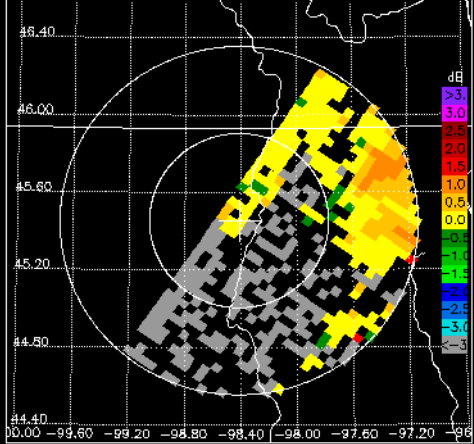
DPR/KA CZ, 0.9° sweep, all valid samples



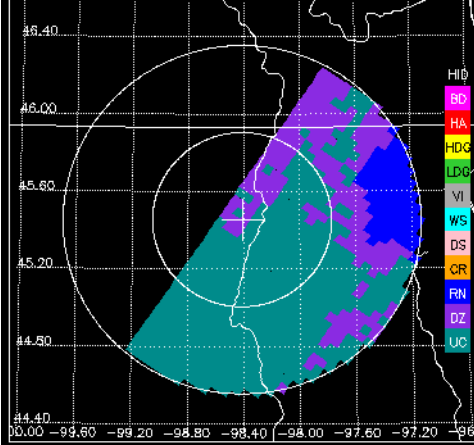
KABR CZ, 0.9° sweep, all valid samples



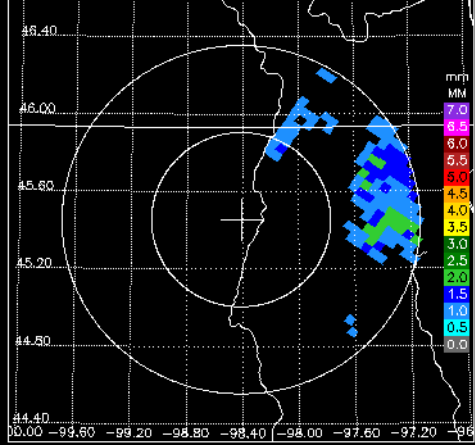
KABR DR, 0.9° sweep, all valid samples



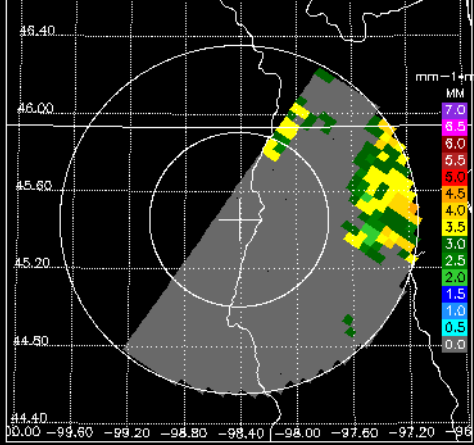
KABR FH, 0.9° sweep, ≥50% bins above threshold



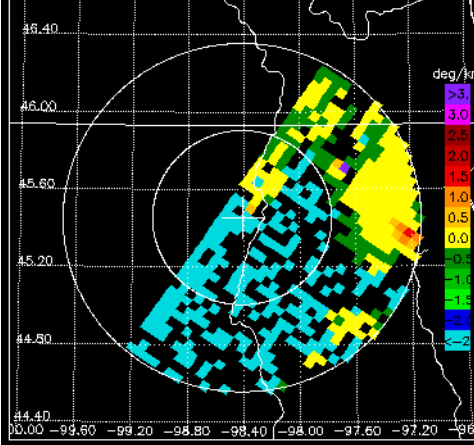
DPR/KA D0, 0.9° sweep, ≥50% bins above threshold



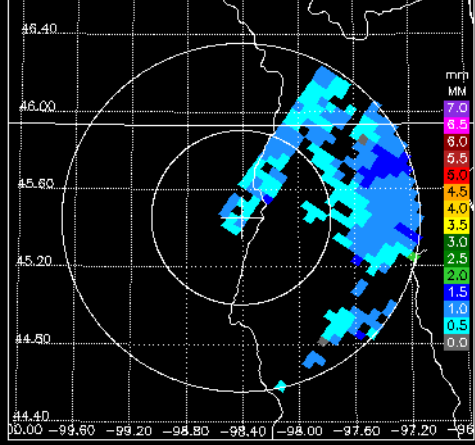
DPR/KA NW, 0.9° sweep, all valid samples



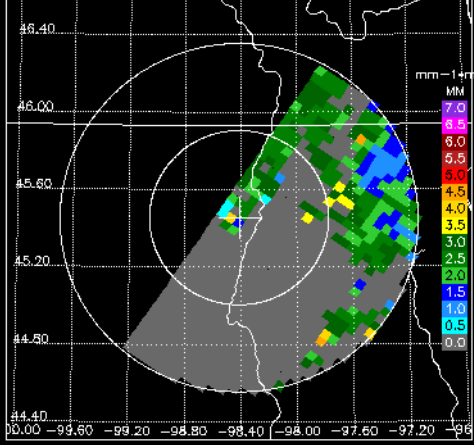
KABR KD, 0.9° sweep, all valid samples



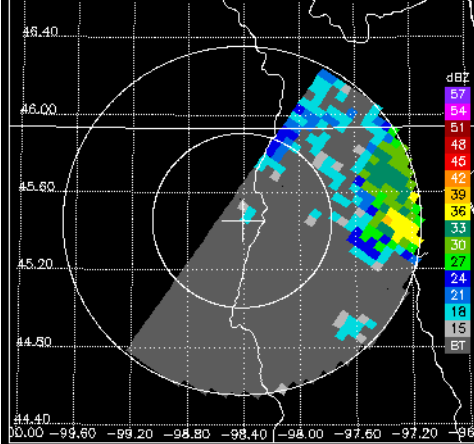
KABR D0, 0.9° sweep, all valid samples



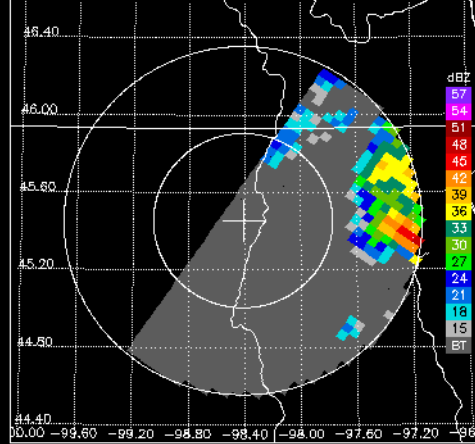
KABR NW, 0.9° sweep, all valid samples



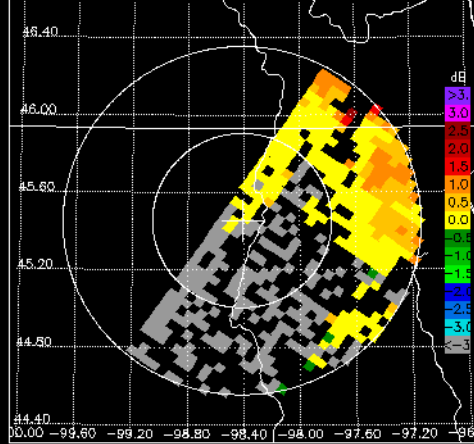
DPR/KA CZ, 1.3° sweep, all valid samples



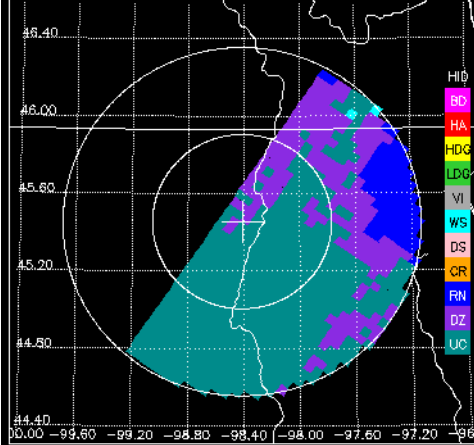
KABR CZ, 1.3° sweep, all valid samples



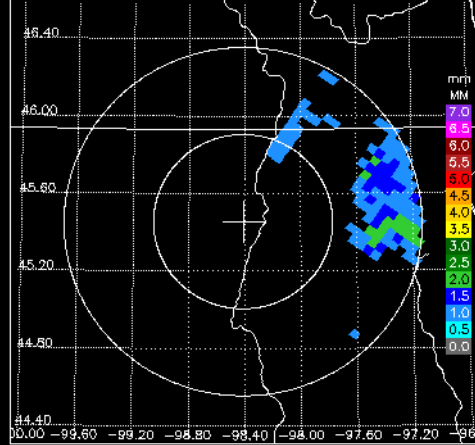
KABR DR, 1.3° sweep, all valid samples



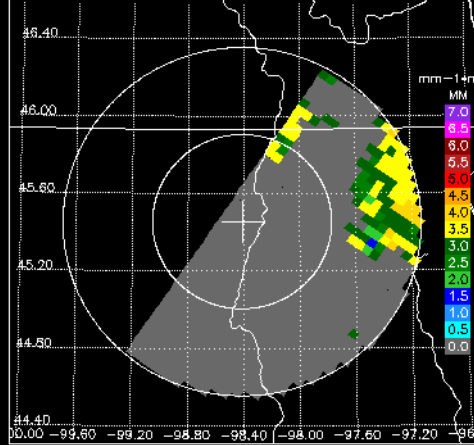
KABR FH, 1.3° sweep, ≥50% bins above threshold



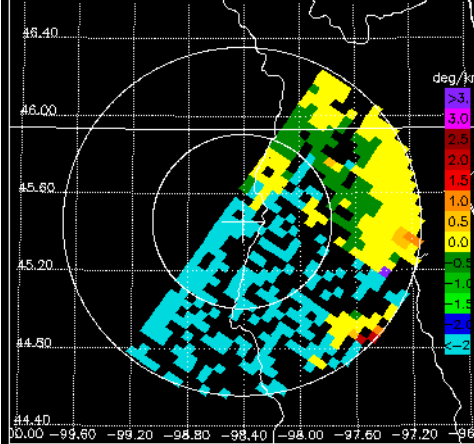
DPR/KA D0, 1.3° sweep, ≥50% bins above threshold



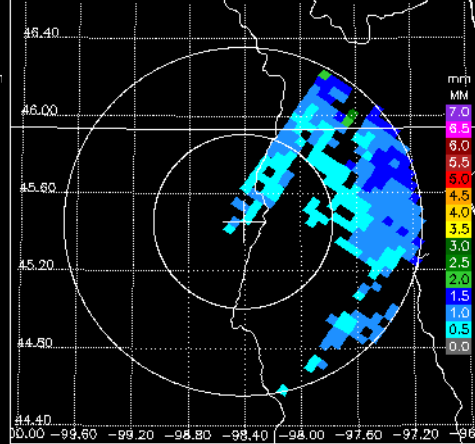
DPR/KA NW, 1.3° sweep, all valid samples



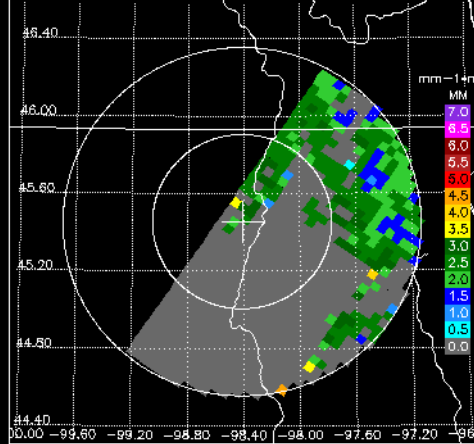
KABR KD, 1.3° sweep, all valid samples



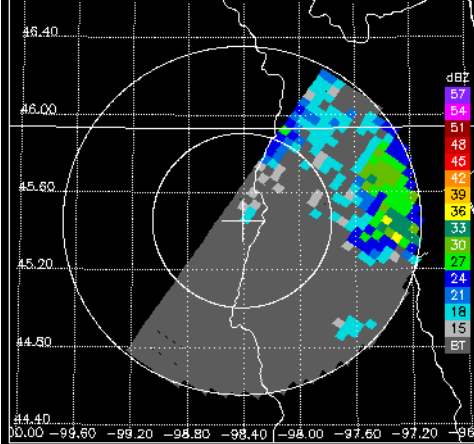
KABR D0, 1.3° sweep, all valid samples



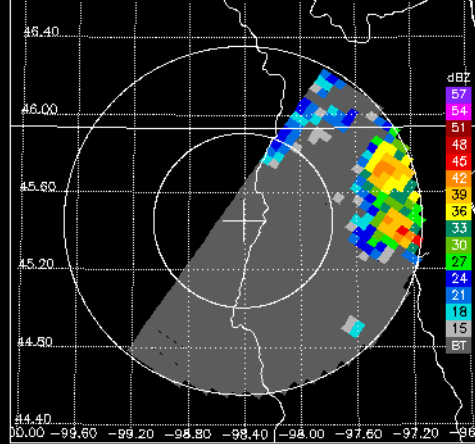
KABR NW, 1.3° sweep, all valid samples



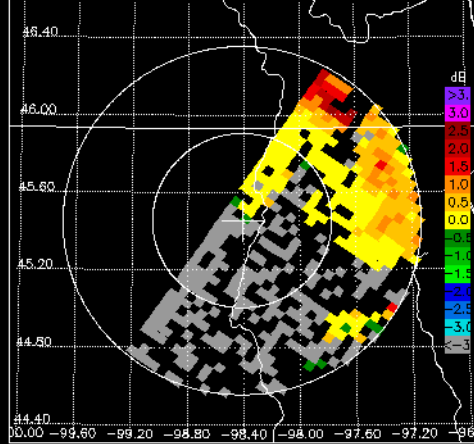
DPR/KA CZ, 1.8° sweep, all valid samples



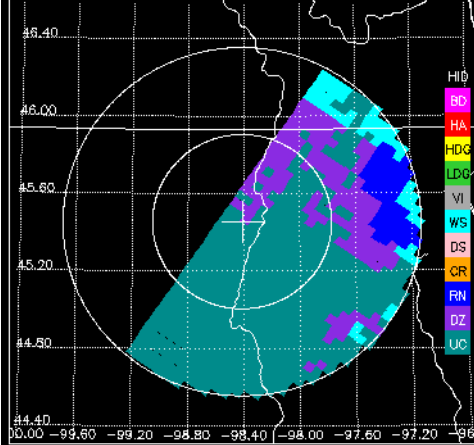
KABR CZ, 1.8° sweep, all valid samples



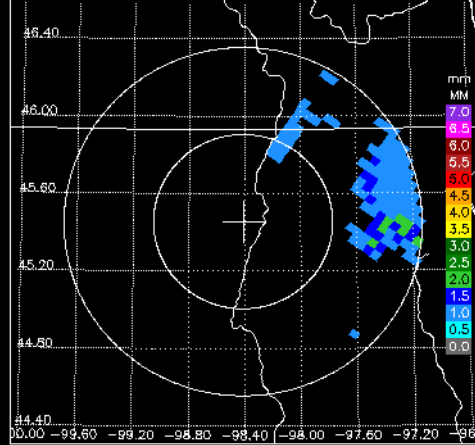
KABR DR, 1.8° sweep, all valid samples



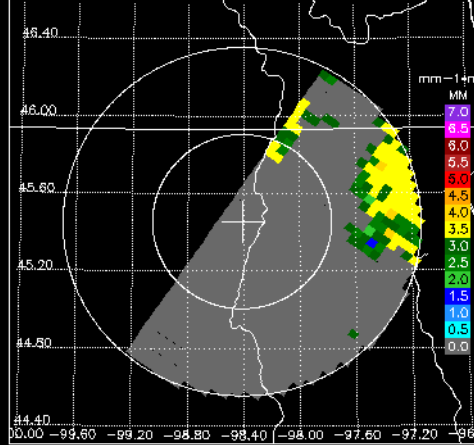
KABR FH, 1.8° sweep, ≥50% bins above threshold



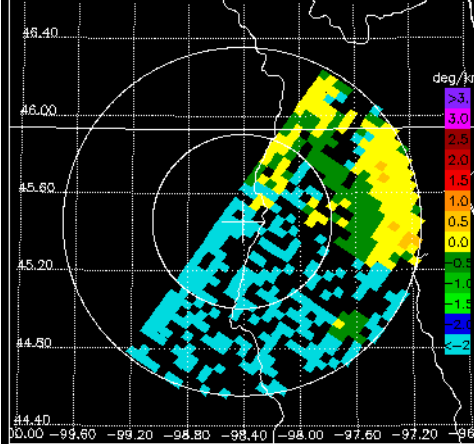
DPR/KA D0, 1.8° sweep, ≥50% bins above threshold



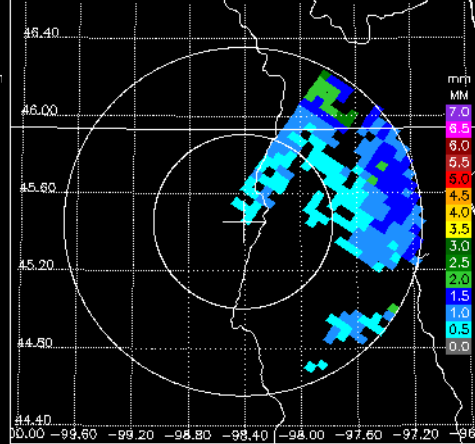
DPR/KA NW, 1.8° sweep, all valid samples



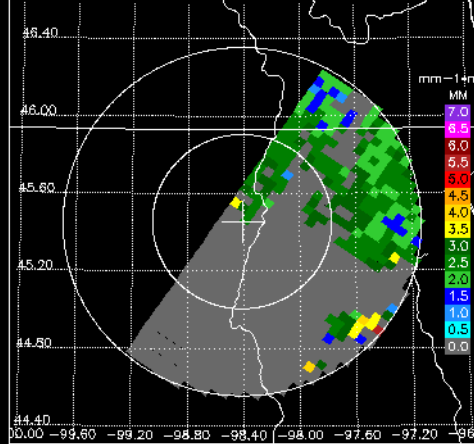
KABR KD, 1.8° sweep, all valid samples



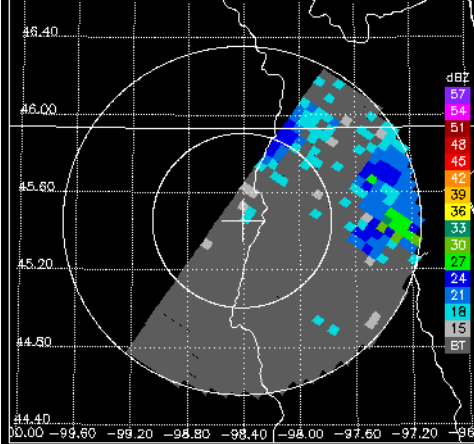
KABR D0, 1.8° sweep, all valid samples



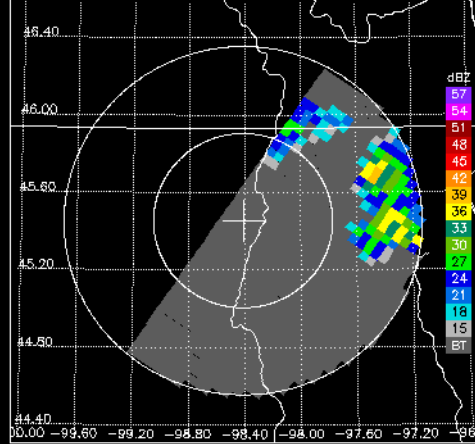
KABR NW, 1.8° sweep, all valid samples



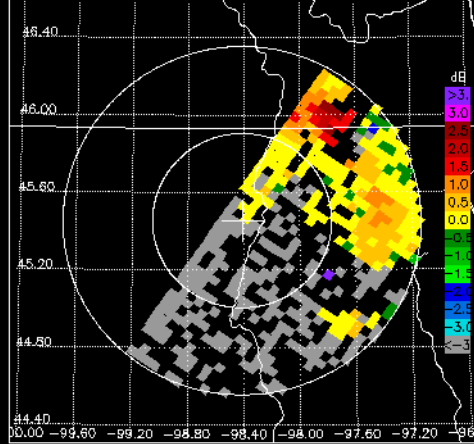
DPR/KA CZ, 2.4° sweep, all valid samples



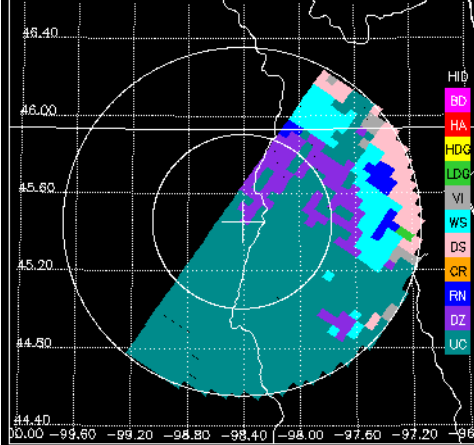
KABR CZ, 2.4° sweep, all valid samples



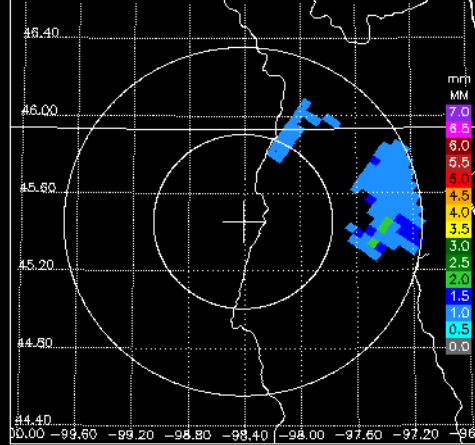
KABR DR, 2.4° sweep, all valid samples



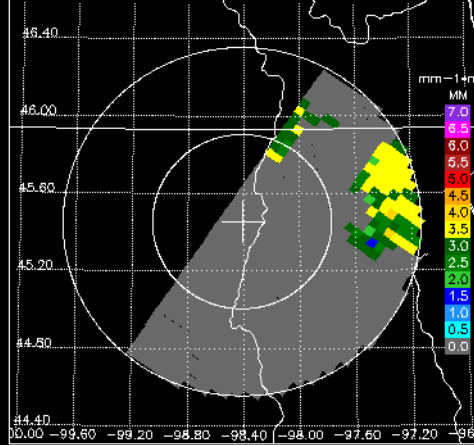
KABR FH, 2.4° sweep, ≥50% bins above threshold



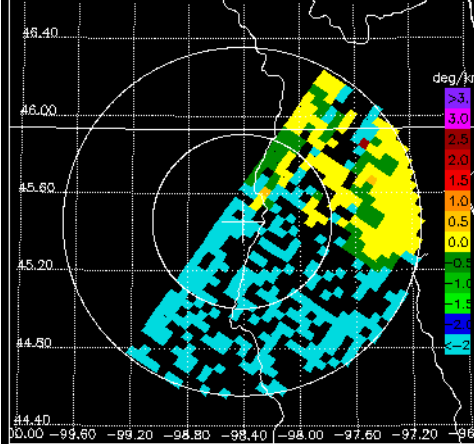
DPR/KA D0, 2.4° sweep, ≥50% bins above threshold



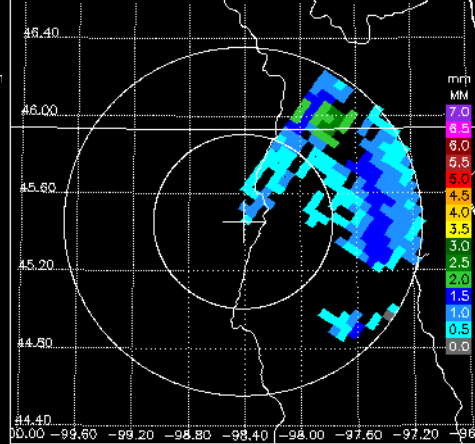
DPR/KA NW, 2.4° sweep, all valid samples



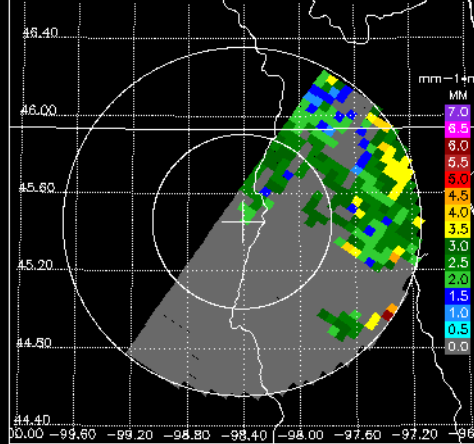
KABR KD, 2.4° sweep, all valid samples



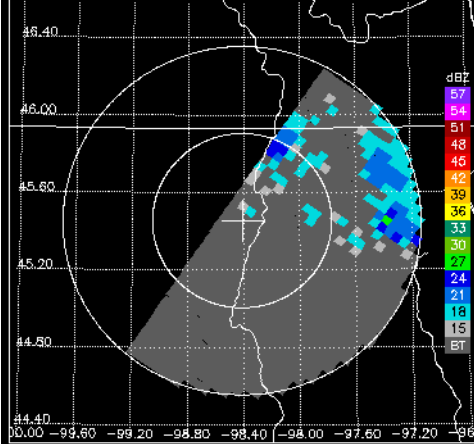
KABR D0, 2.4° sweep, all valid samples



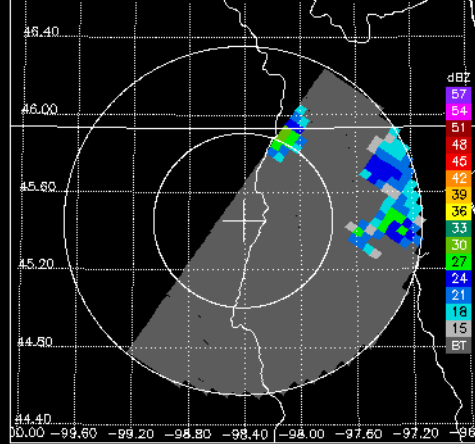
KABR NW, 2.4° sweep, all valid samples



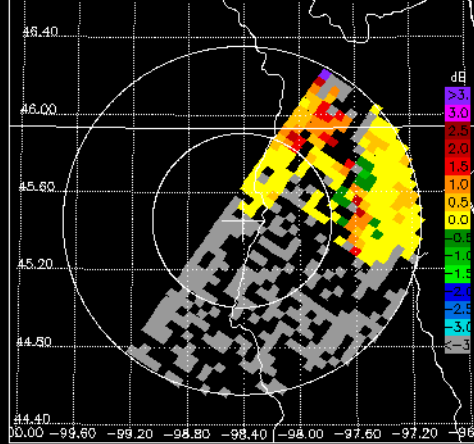
DPR/KA CZ, 3.1° sweep, all valid samples



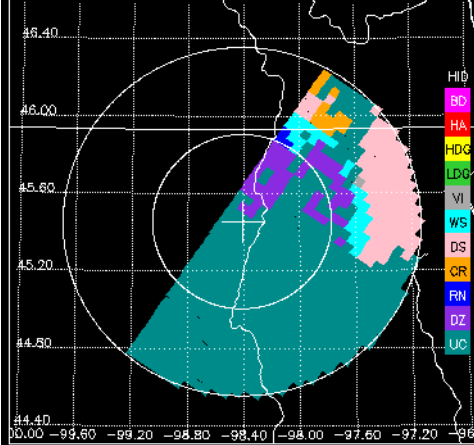
KABR CZ, 3.1° sweep, all valid samples



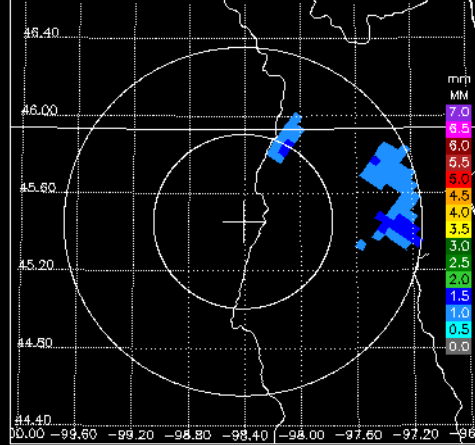
KABR DR, 3.1° sweep, all valid samples



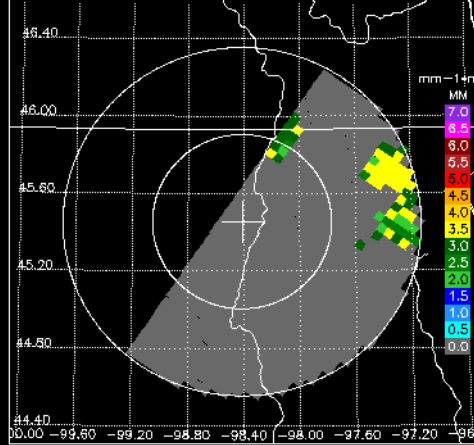
KABR FH, 3.1° sweep, ≥50% bins above threshold



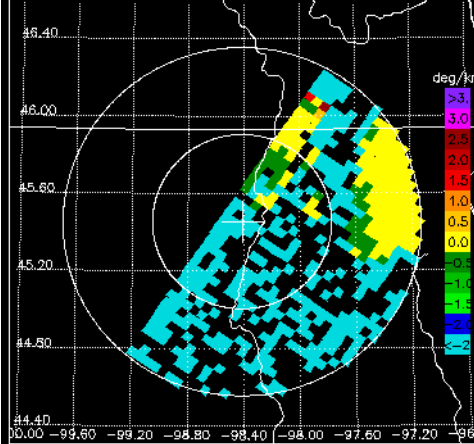
DPR/KA D0, 3.1° sweep, ≥50% bins above threshold



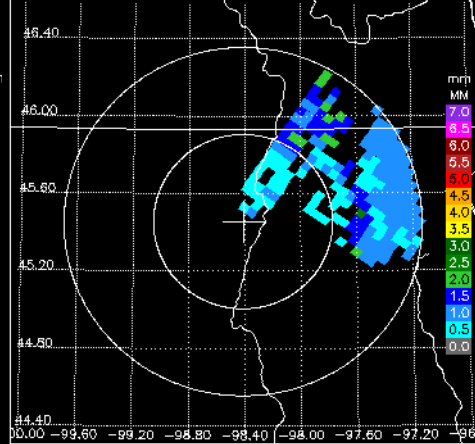
DPR/KA NW, 3.1° sweep, all valid samples



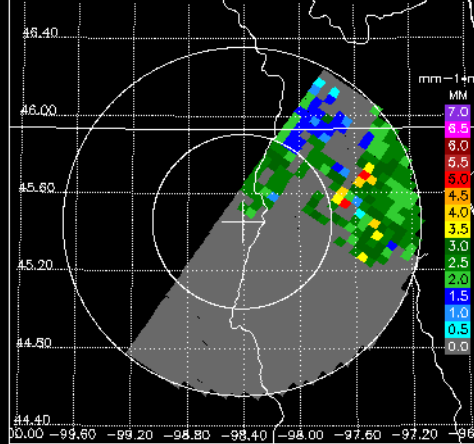
KABR KD, 3.1° sweep, all valid samples



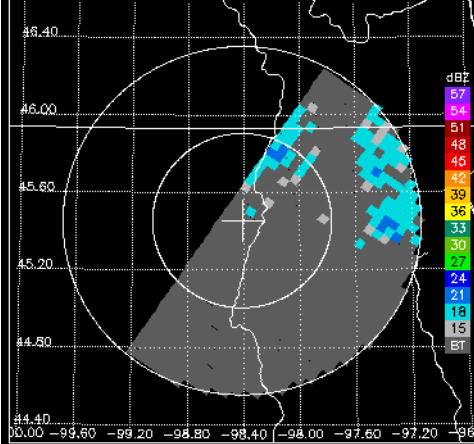
KABR D0, 3.1° sweep, all valid samples



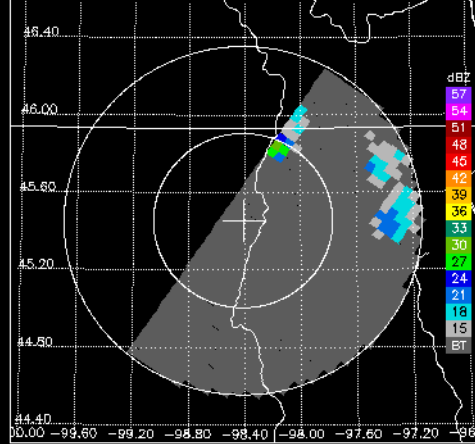
KABR NW, 3.1° sweep, all valid samples



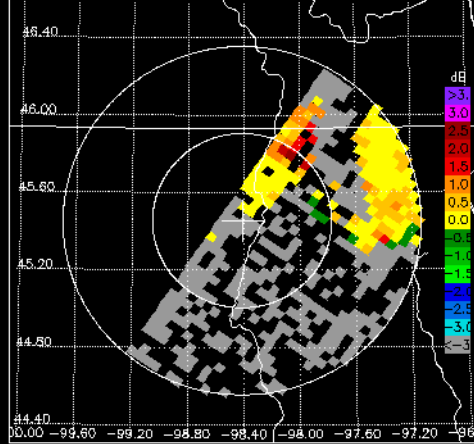
DPR/KA CZ, 4.0° sweep, all valid samples



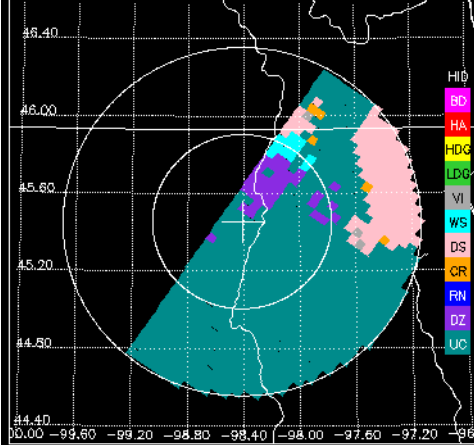
KABR CZ, 4.0° sweep, all valid samples



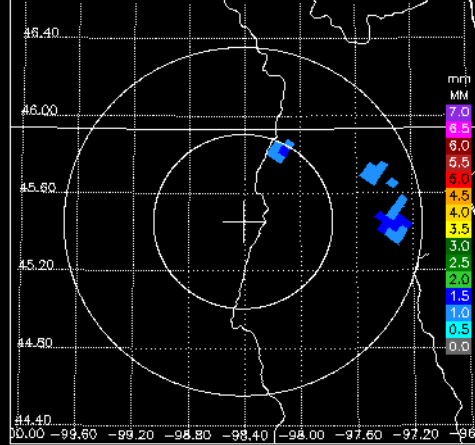
KABR DR, 4.0° sweep, all valid samples



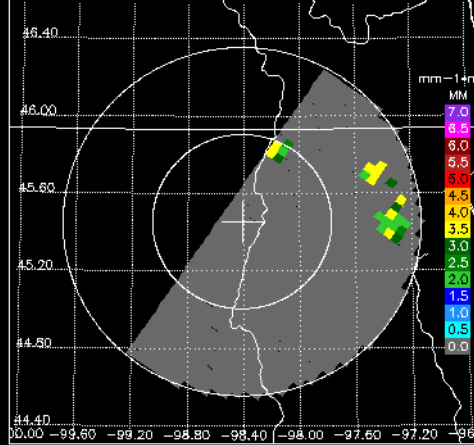
KABR FH, 4.0° sweep, ≥50% bins above threshold



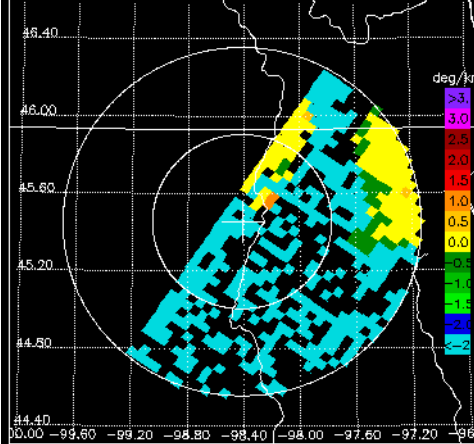
DPR/KA D0, 4.0° sweep, ≥50% bins above threshold



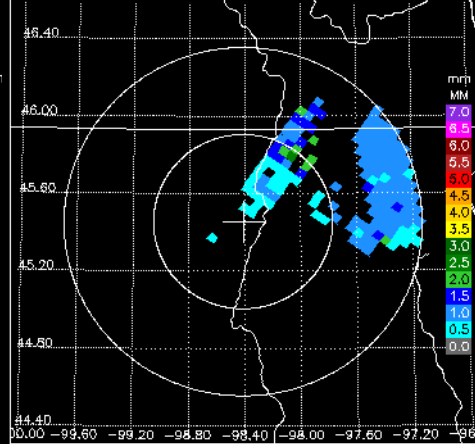
DPR/KA NW, 4.0° sweep, all valid samples



KABR KD, 4.0° sweep, all valid samples



KABR D0, 4.0° sweep, all valid samples



KABR NW, 4.0° sweep, all valid samples

