

KING Zc vs. DPR.KU.NS.V02A >=50% bins above threshold
 Orbit: 205 -- GR Start Time: 2014-03-12 20:49:45

DPRKU-GR Reflectivity difference statistics (dBZ) - GR Site: KING

Orbit: 205 Version: V02A Swath Type: NS

DPR time = 2014-03-12 20:44:52 GR start time = 2014-03-12 20:49:45

Required percent of above-threshold DPR and GR bins in matched volumes >= 50%

Thresholding by reflectivity cutoffs.

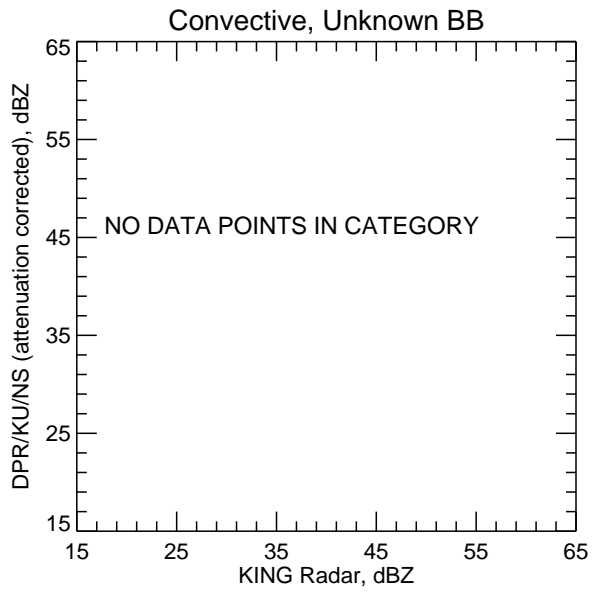
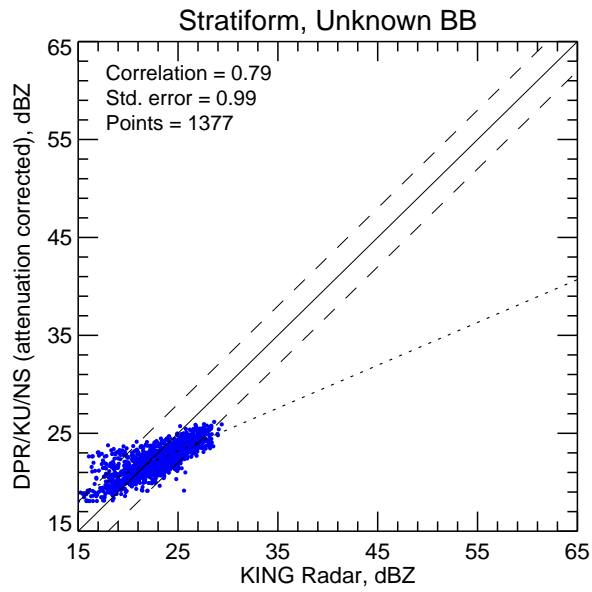
Statistics grouped by fixed height levels (km):

Vert. Layer	Any Rain Type		Stratiform		Convective		Dataset Statistics		
	DPR-GR	NumPts	DPR-GR	NumPts	DPR-GR	NumPts	AvgDist	DPRMaxZ	GRMaxZ
1.5	-0.864	1028	-0.878	1013	-99.999	0	70.803	26.162	29.377
3.0	0.002	299	0.021	297	-99.999	0	79.975	24.212	27.194

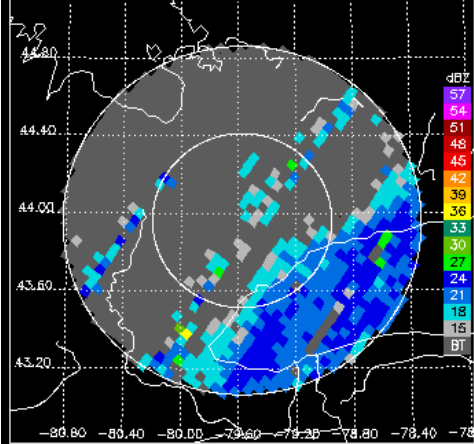
Statistics grouped by proximity to Bright Band:

Surface type	Any Rain Type		Stratiform		Convective		Dataset Statistics		
	DPR-GR	NumPts	DPR-GR	NumPts	DPR-GR	NumPts	AvgDist	DPRMaxZ	GRMaxZ
Unknown	-0.657	1394	-0.662	1377	-99.999	0	71.818	26.162	29.377

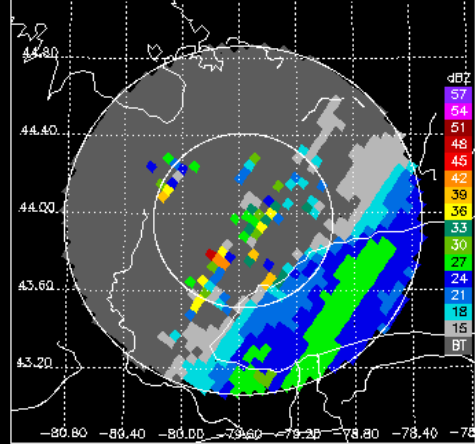
KING Zc vs. DPR.KU.NS.V02A >=50% bins above threshold



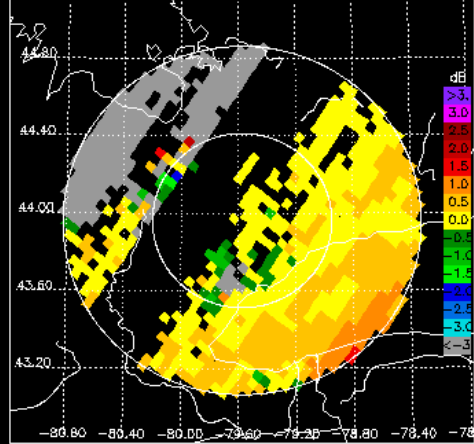
DPR/KU CZ, 0.0° sweep, all valid samples



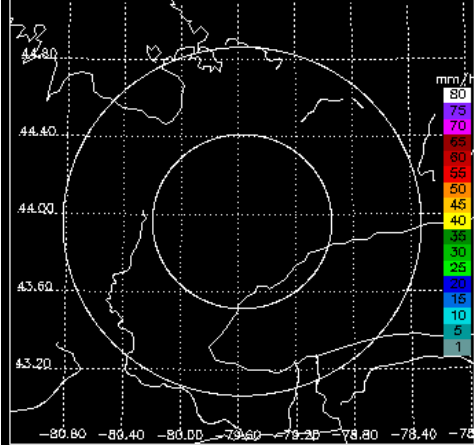
KING CZ, 0.0° sweep, all valid samples



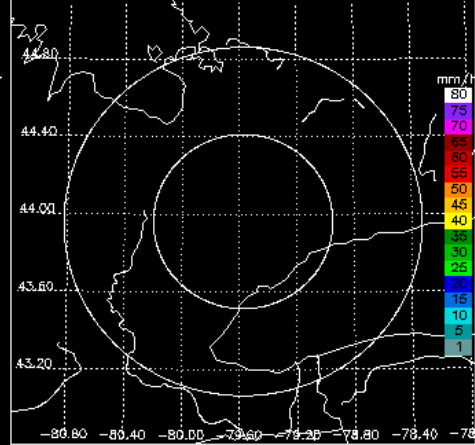
KING DR, 0.0° sweep, all valid samples



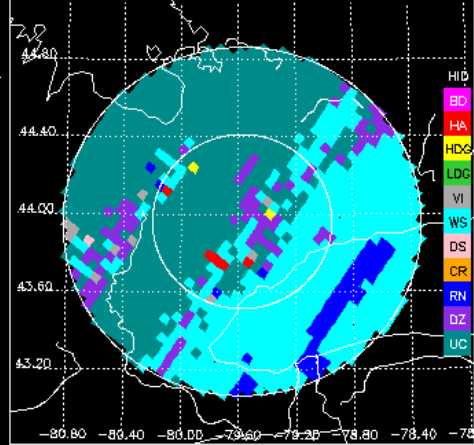
DPR/KU RR, 0.0° sweep, ≥50% bins above threshold



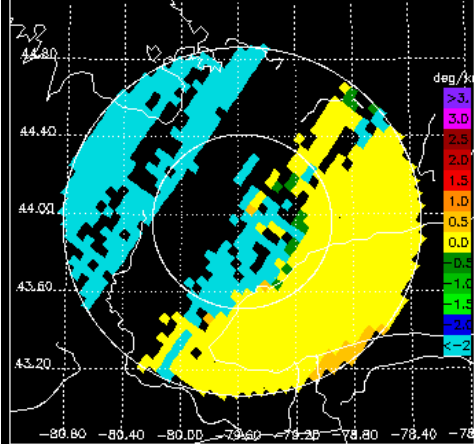
KING DP RR, 0.0° sweep, ≥50% bins above threshold



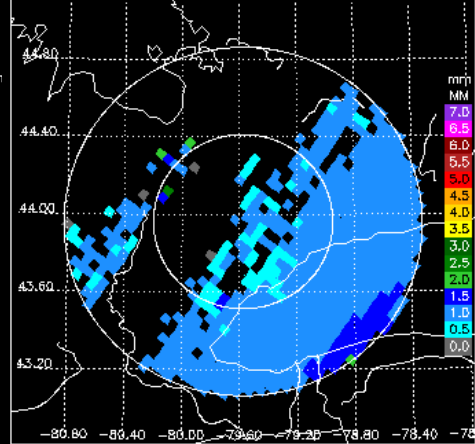
KING FH, 0.0° sweep, all valid samples



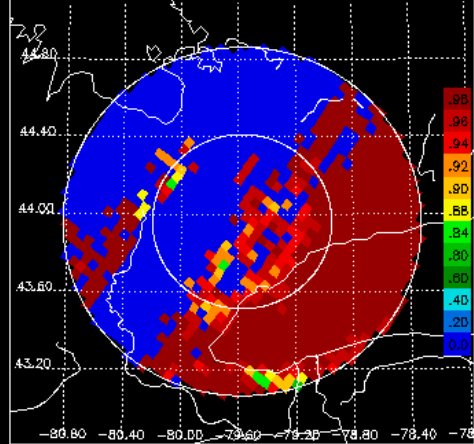
KING KD, 0.0° sweep, all valid samples



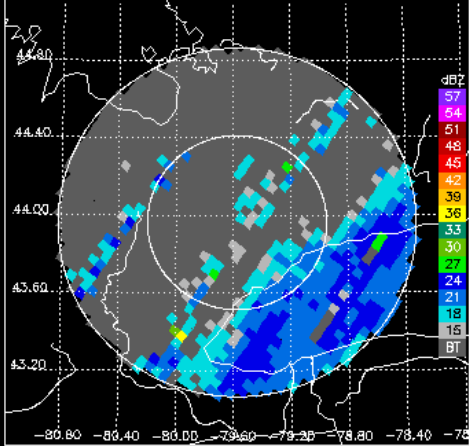
KING DD, 0.0° sweep, all valid samples



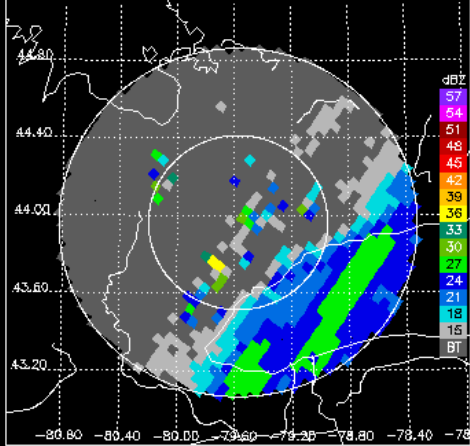
KING RH, 0.0° sweep, all valid samples



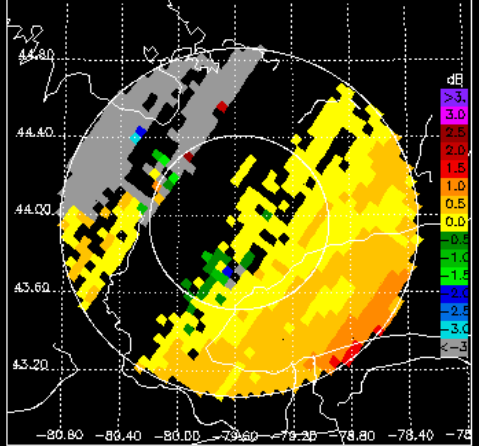
DPR/KU CZ, 0.2° sweep, all valid samples



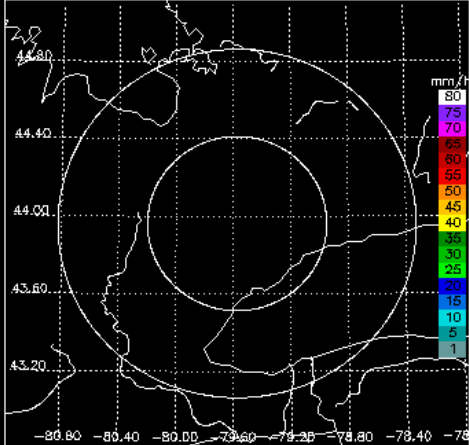
KING CZ, 0.2° sweep, all valid samples



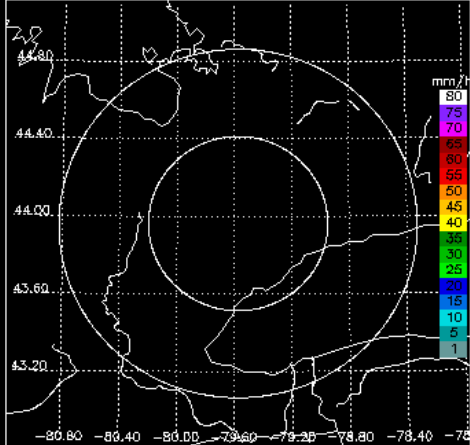
KING DR, 0.2° sweep, all valid samples



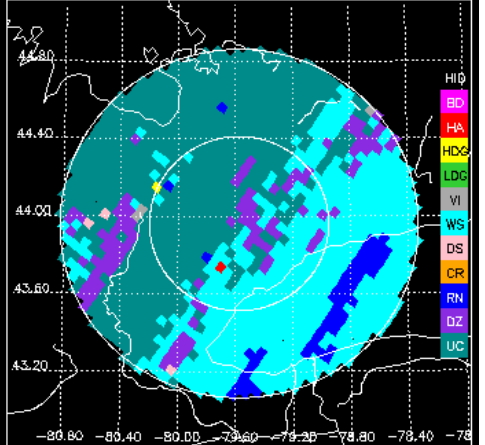
DPR/KU RR, 0.2° sweep, $\geq 50\%$ bins above threshold



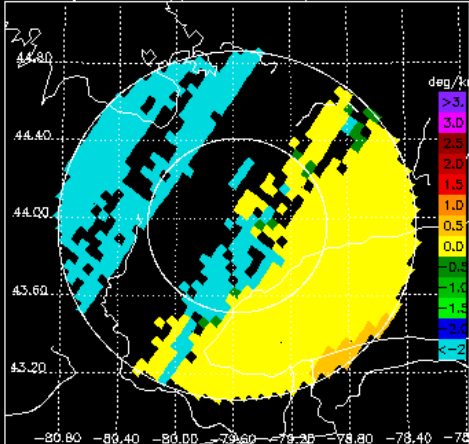
KING DP RR, 0.2° sweep, $\geq 50\%$ bins above threshold



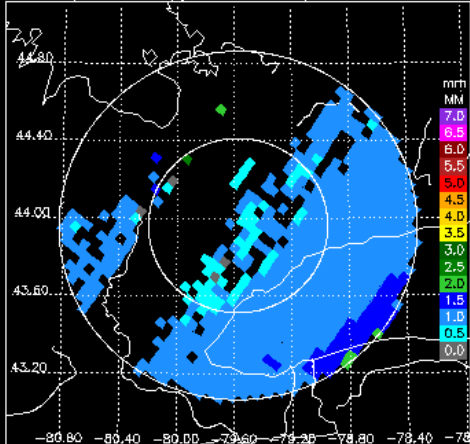
KING FH, 0.2° sweep, all valid samples



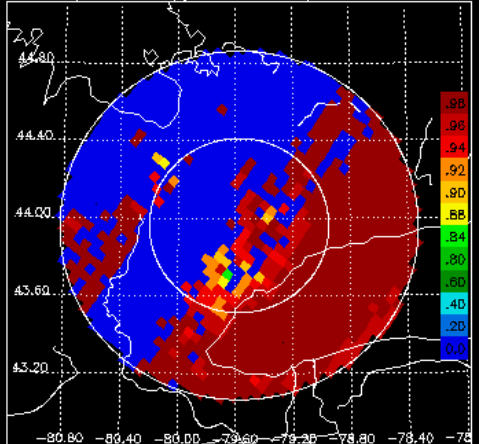
KING KD, 0.2° sweep, all valid samples



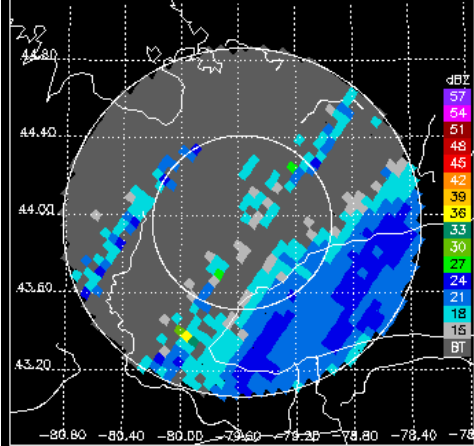
KING DO, 0.2° sweep, all valid samples



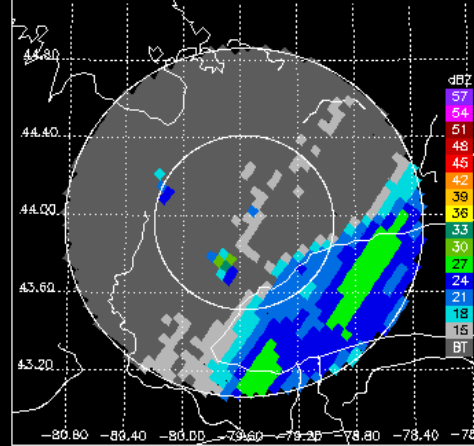
KING RH, 0.2° sweep, all valid samples



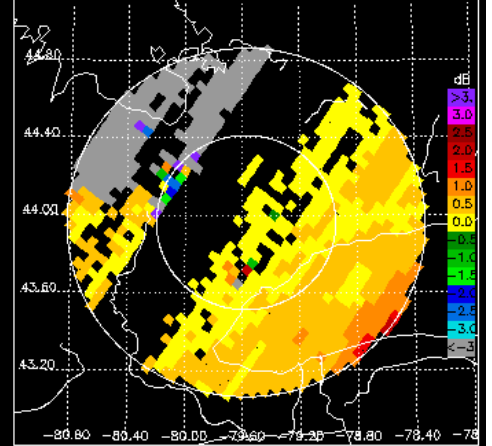
DPR/KU CZ, 0.4° sweep, all valid samples



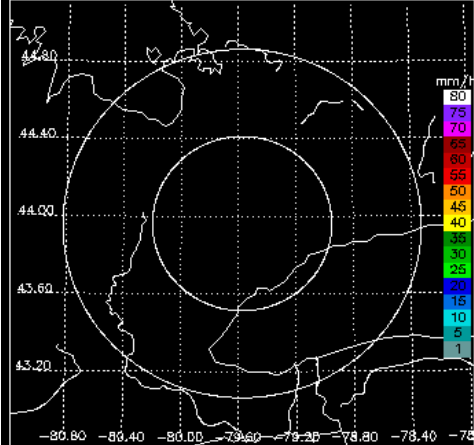
KING CZ, 0.4° sweep, all valid samples



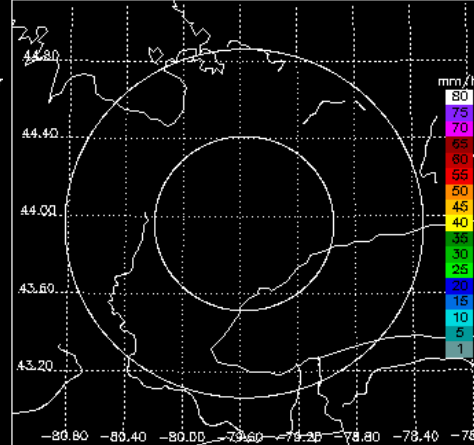
KING DR, 0.4° sweep, all valid samples



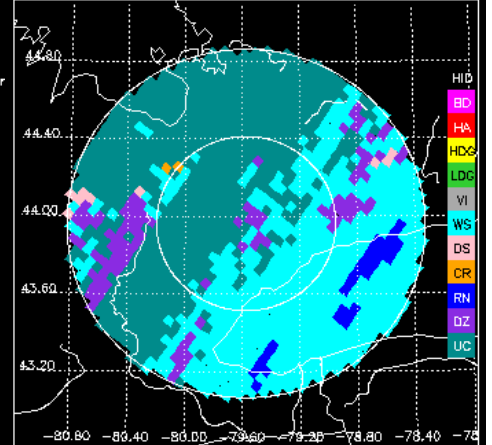
DPR/KU RR, 0.4° sweep, $\geq 50\%$ bins above threshold



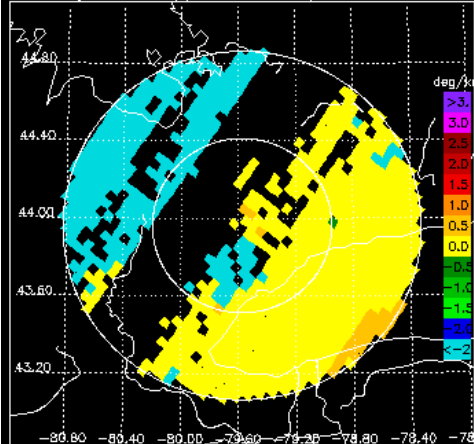
KING DP RR, 0.4° sweep, $\geq 50\%$ bins above threshold



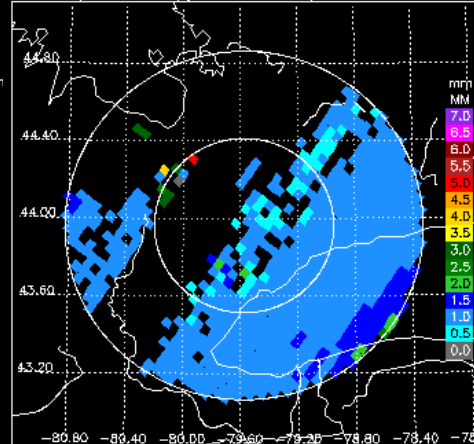
KING FH, 0.4° sweep, all valid samples



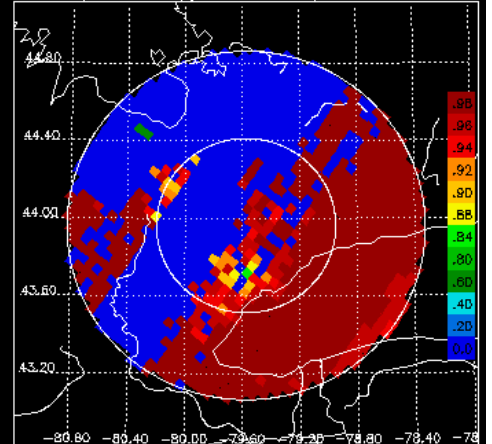
KING KD, 0.4° sweep, all valid samples



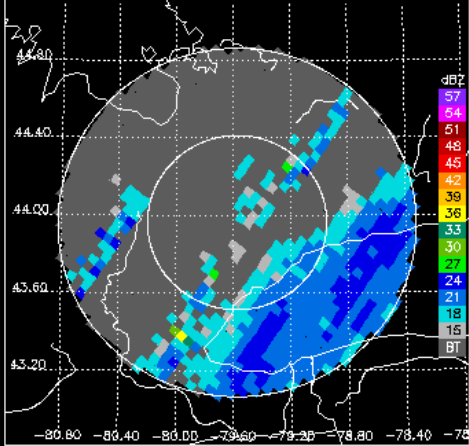
KING DD, 0.4° sweep, all valid samples



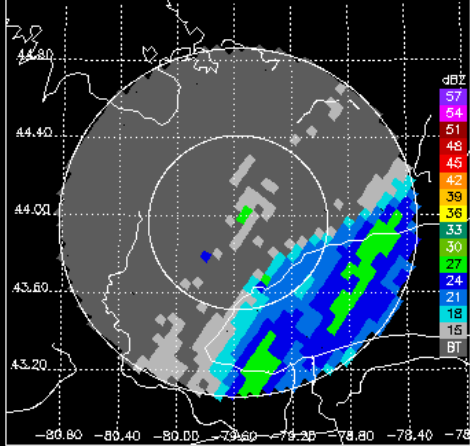
KING RH, 0.4° sweep, all valid samples



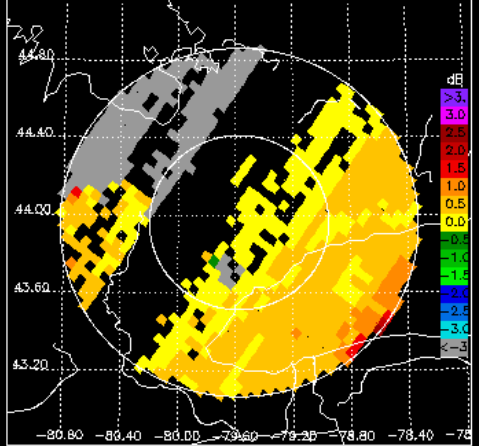
DPR/KU CZ, 0.6° sweep, all valid samples



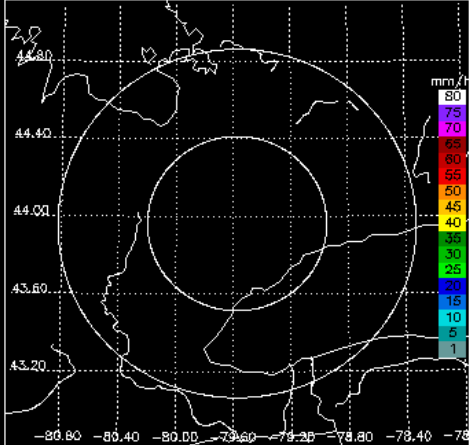
KING CZ, 0.6° sweep, all valid samples



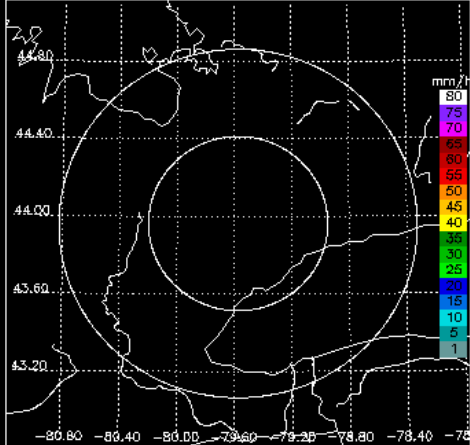
KING DR, 0.6° sweep, all valid samples



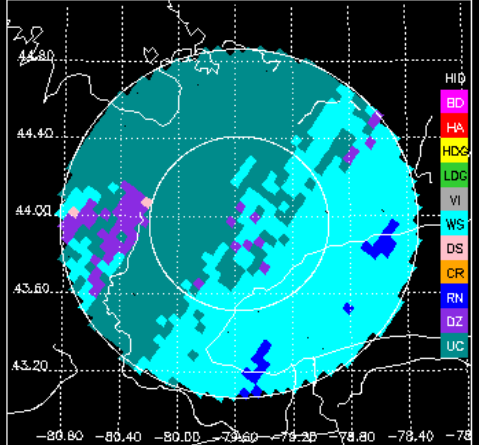
DPR/KU RR, 0.6° sweep, ≥50% bins above threshold



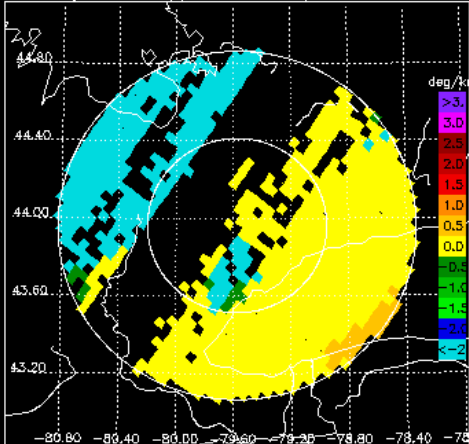
KING DP RR, 0.6° sweep, ≥50% bins above threshold



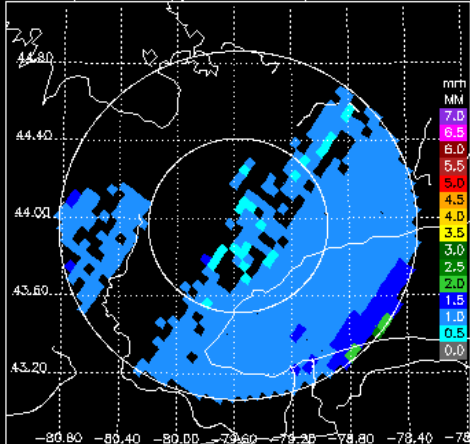
KING FH, 0.6° sweep, all valid samples



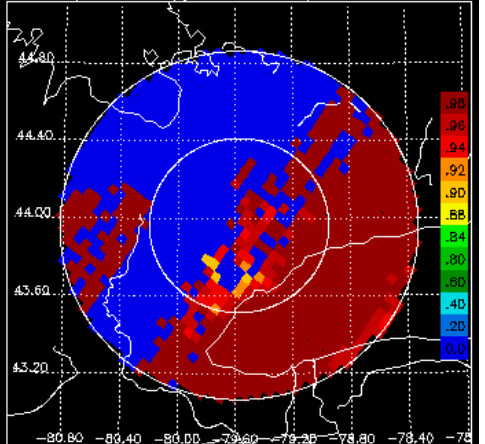
KING KD, 0.6° sweep, all valid samples



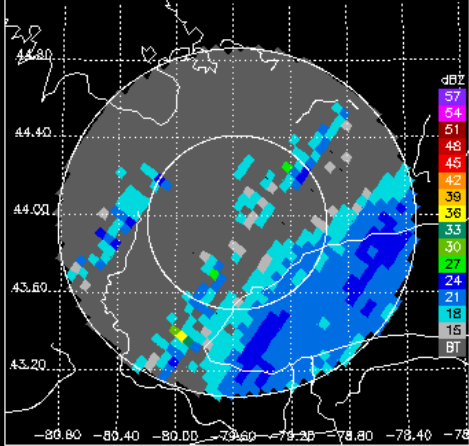
KING DD, 0.6° sweep, all valid samples



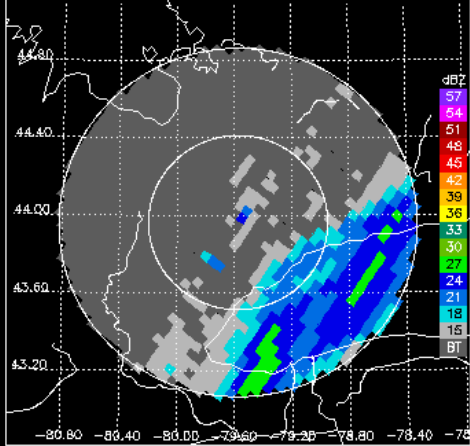
KING RH, 0.6° sweep, all valid samples



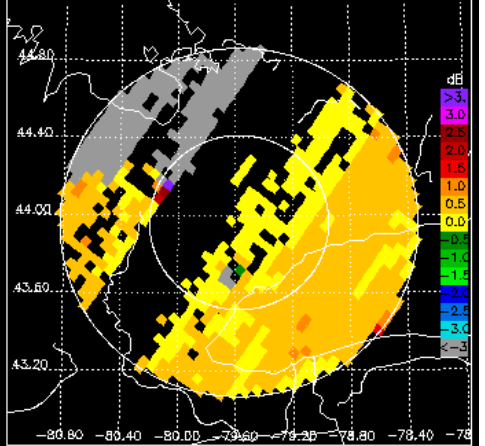
DPR/KU CZ, 0.8° sweep, all valid samples



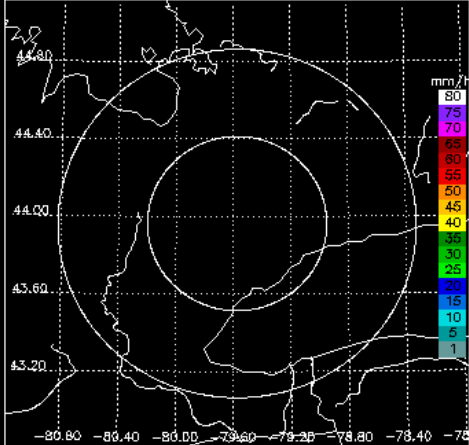
KING CZ, 0.8° sweep, all valid samples



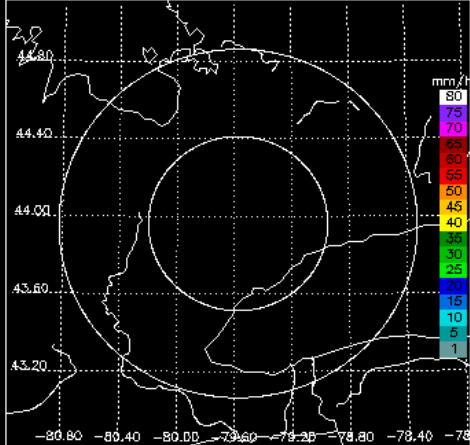
KING DR, 0.8° sweep, all valid samples



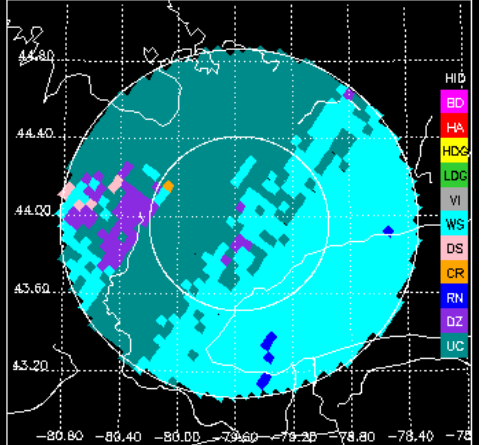
DPR/KU RR, 0.8° sweep, ≥50% bins above threshold



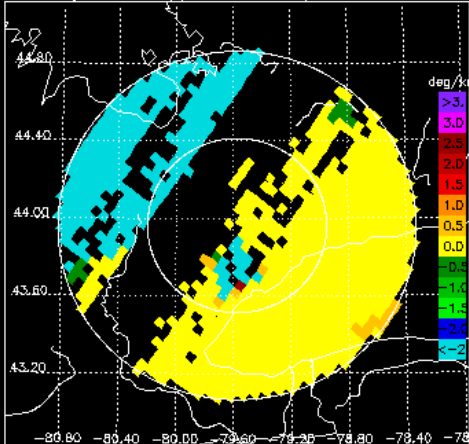
KING DP RR, 0.8° sweep, ≥50% bins above threshold



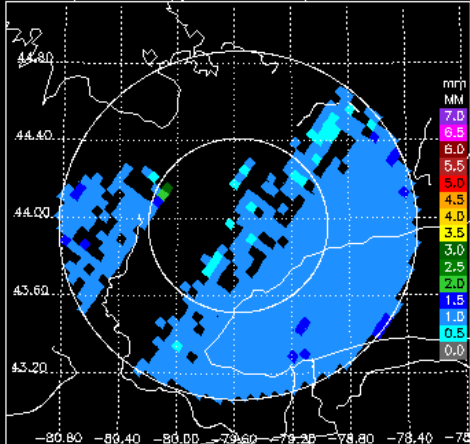
KING FH, 0.8° sweep, all valid samples



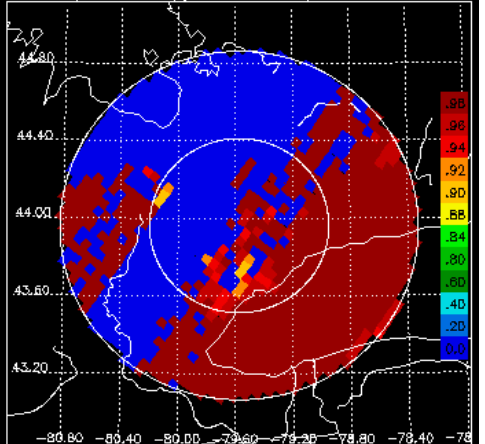
KING KD, 0.8° sweep, all valid samples



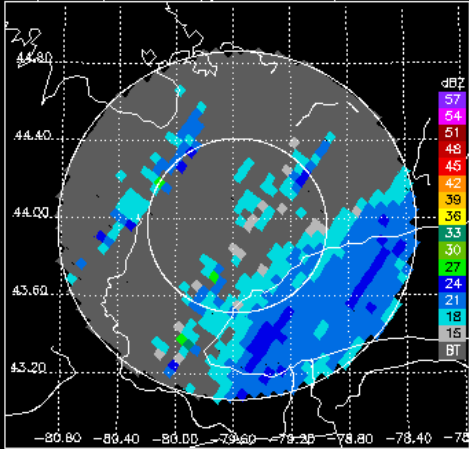
KING DD, 0.8° sweep, all valid samples



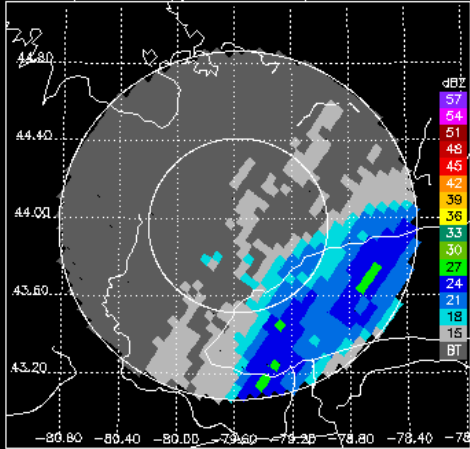
KING RH, 0.8° sweep, all valid samples



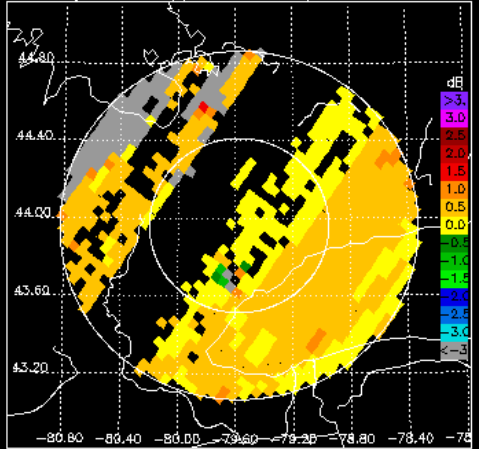
DPR/KU CZ, 1.1° sweep, all valid samples



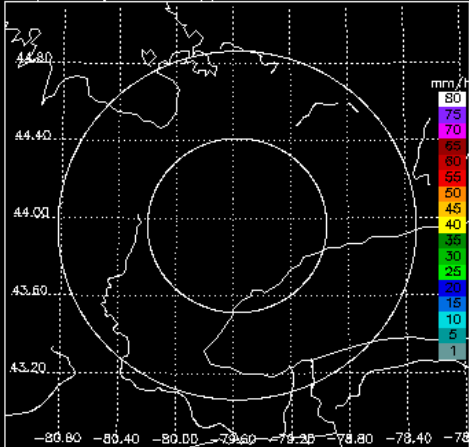
KING CZ, 1.1° sweep, all valid samples



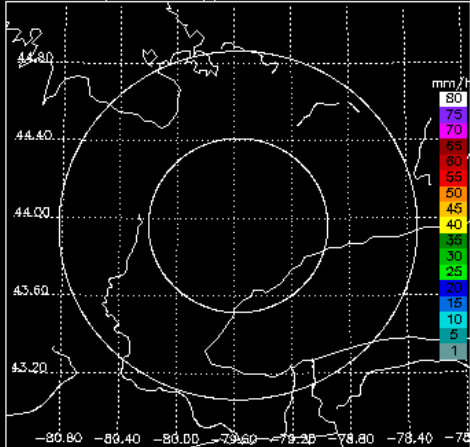
KING DR, 1.1° sweep, all valid samples



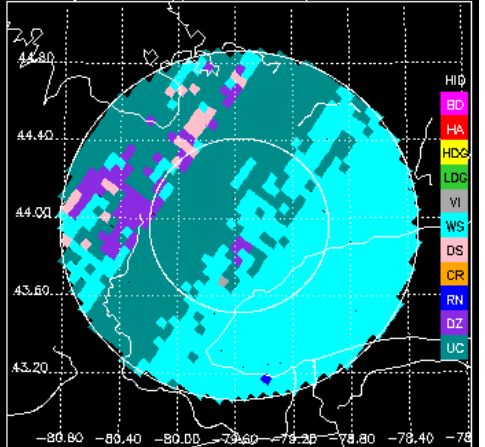
DPR/KU RR, 1.1° sweep, $\geq 50\%$ bins above threshold



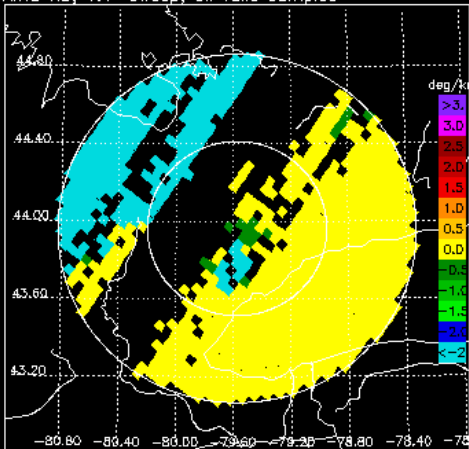
KING DP RR, 1.1° sweep, $\geq 50\%$ bins above threshold



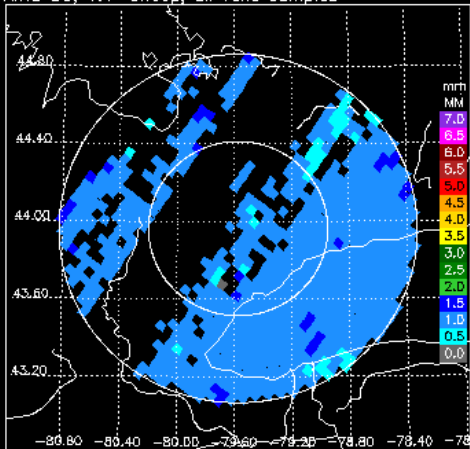
KING FH, 1.1° sweep, all valid samples



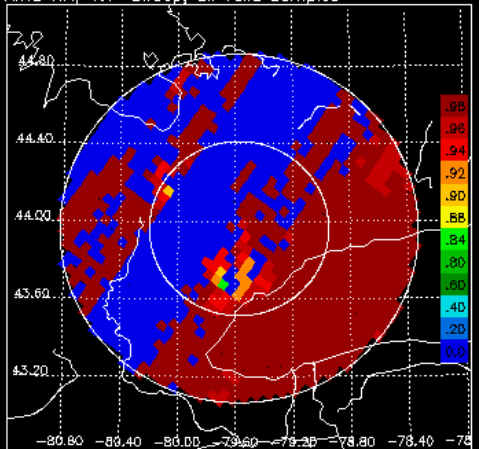
KING KD, 1.1° sweep, all valid samples



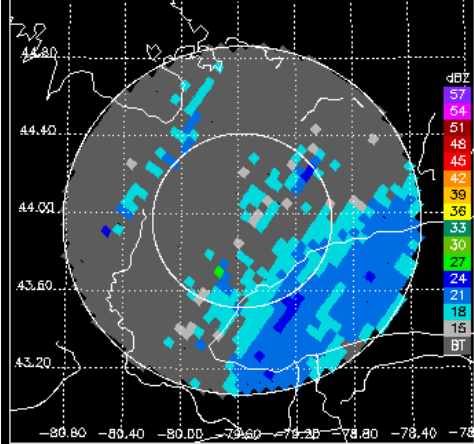
KING DD, 1.1° sweep, all valid samples



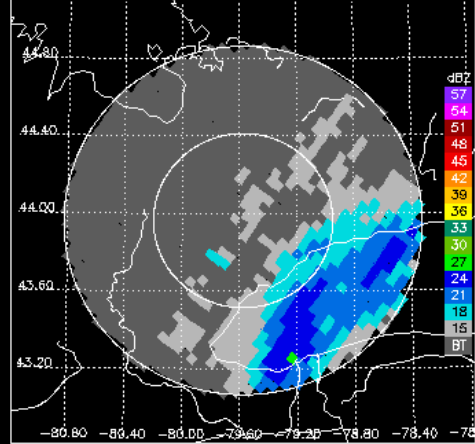
KING RH, 1.1° sweep, all valid samples



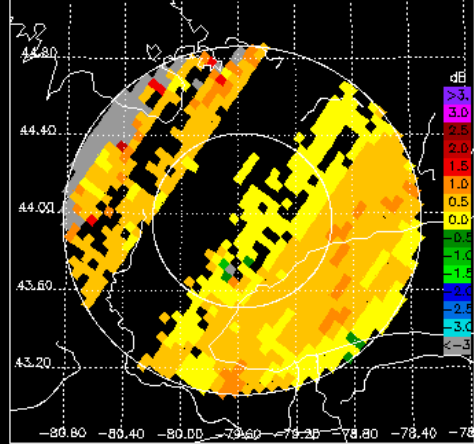
DPR/KU CZ, 1.4° sweep, all valid samples



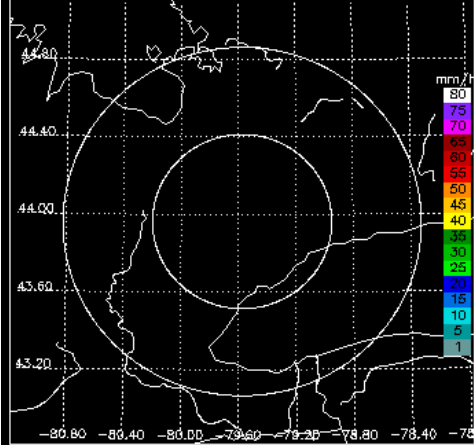
KING CZ, 1.4° sweep, all valid samples



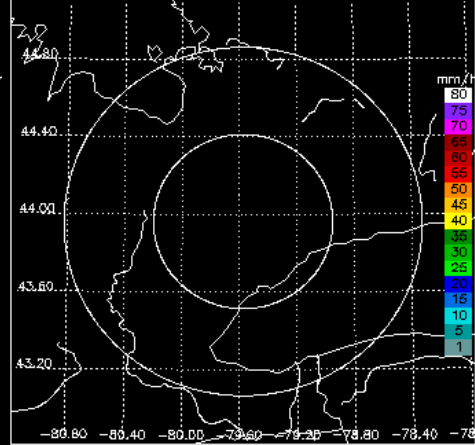
KING DR, 1.4° sweep, all valid samples



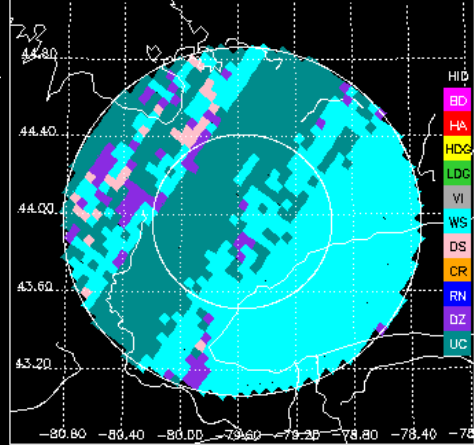
DPR/KU RR, 1.4° sweep, $\geq 50\%$ bins above threshold



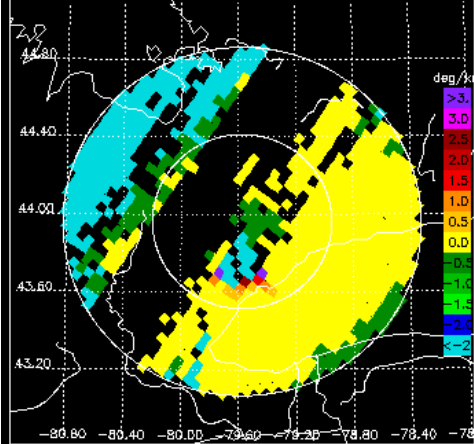
KING DP RR, 1.4° sweep, $\geq 50\%$ bins above threshold



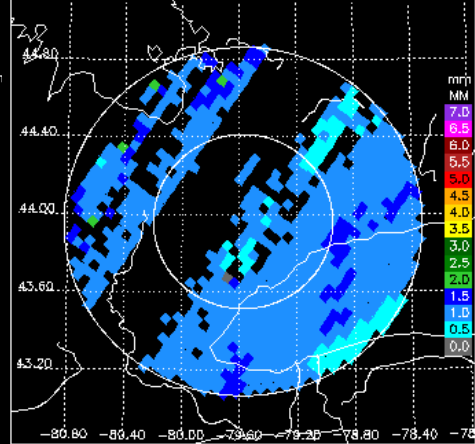
KING FH, 1.4° sweep, all valid samples



KING KD, 1.4° sweep, all valid samples



KING DO, 1.4° sweep, all valid samples



KING RH, 1.4° sweep, all valid samples

