

KJAX Zc vs. DPR.KU.NS.V02A >=75% bins above threshold
 Orbit: 620 -- GR Start Time: 2014-04-08 12:27:35

DPRKU-GR Reflectivity difference statistics (dBZ) - GR Site: KJAX

Orbit: 620 Version: V02A Swath Type: NS

DPR time = 2014-04-08 12:29:54 GR start time = 2014-04-08 12:27:35

Required percent of above-threshold DPR and GR bins in matched volumes >= 75%

Thresholding by reflectivity cutoffs.

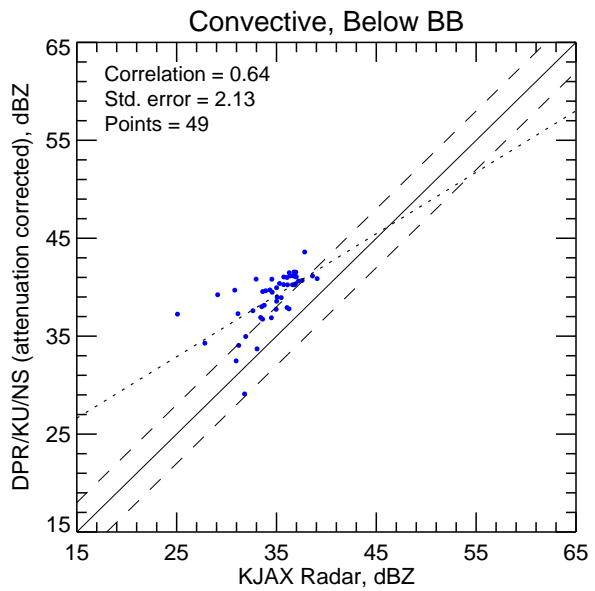
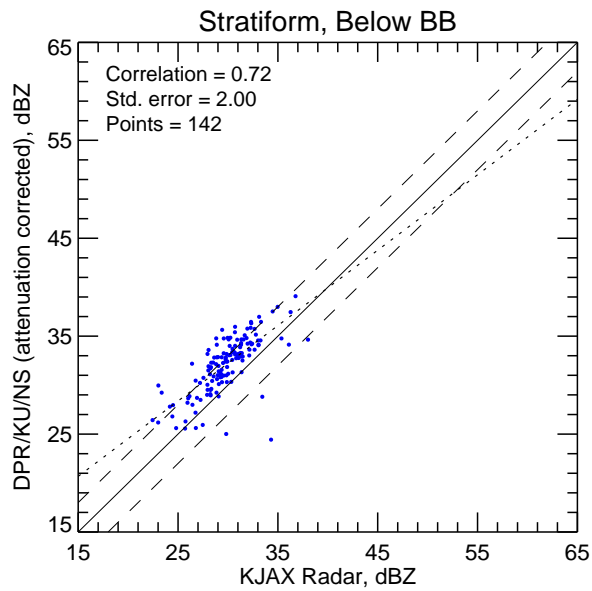
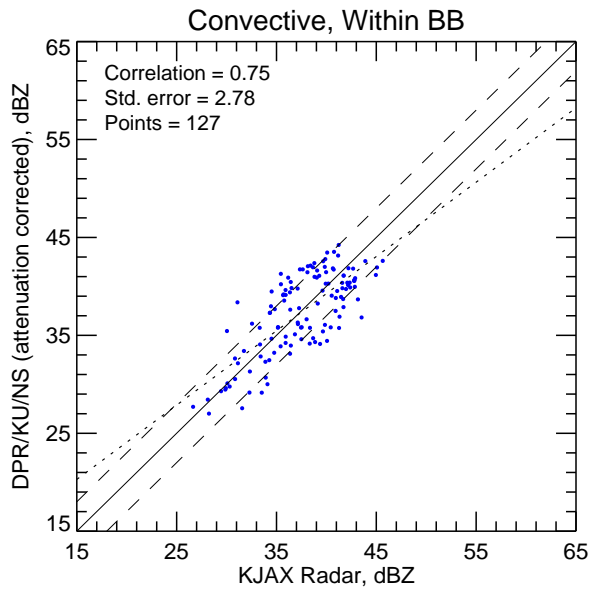
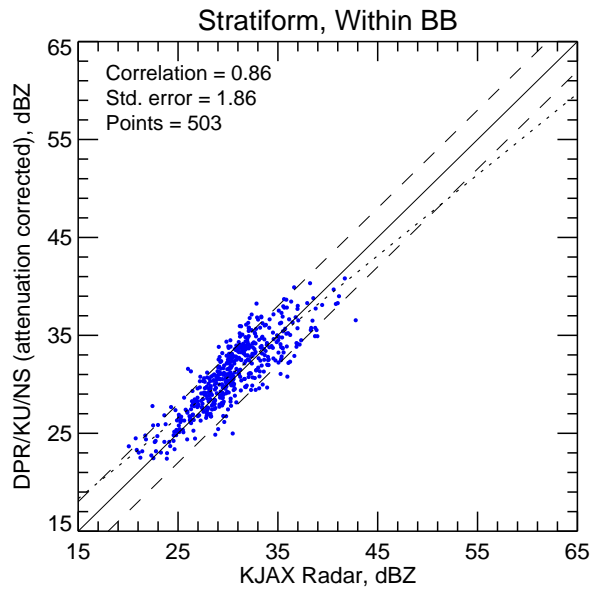
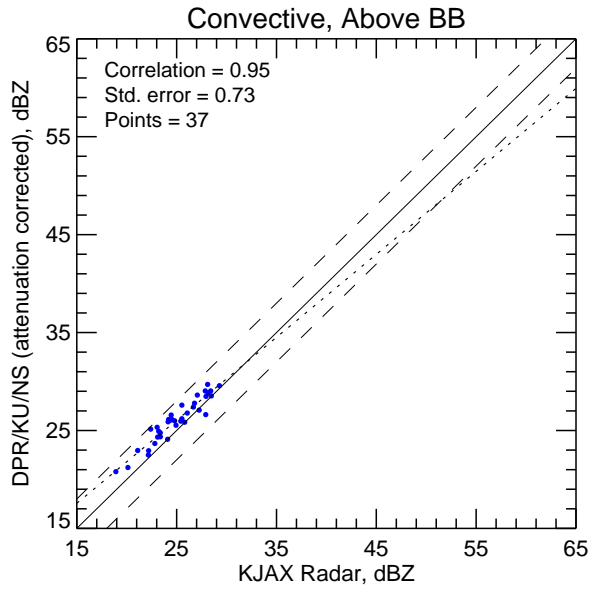
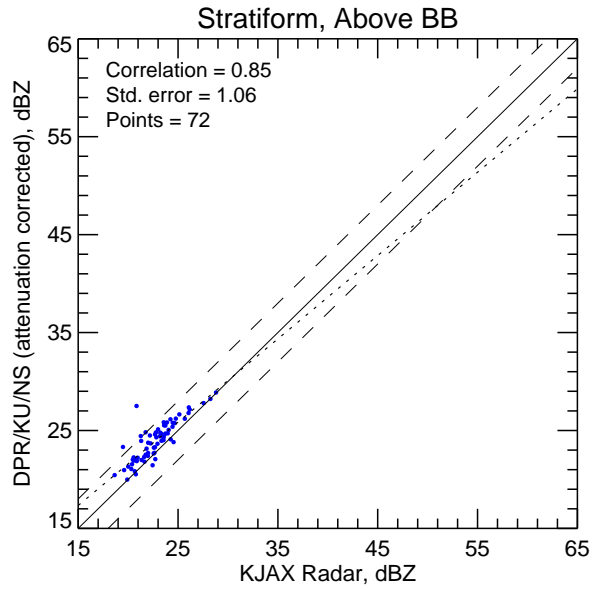
Statistics grouped by fixed height levels (km):

Vert. Layer	Any Rain Type		Stratiform		Convective		Dataset Statistics		
	DPR-GR	NumPts	DPR-GR	NumPts	DPR-GR	NumPts	AvgDist	DPRMaxZ	GRMaxZ
1.5	2.719	239	2.186	182	4.359	57	84.950	43.595	39.073
3.0	0.655	398	0.787	322	0.096	76	82.053	44.231	45.644 @ BB
4.5	-0.755	224	-0.300	174	-2.174	50	82.691	38.924	43.524 @ BB
6.0	1.082	67	1.134	39	1.016	28	86.422	29.037	28.412
7.5	1.869	2	-99.999	0	1.869	2	89.125	22.956	21.099

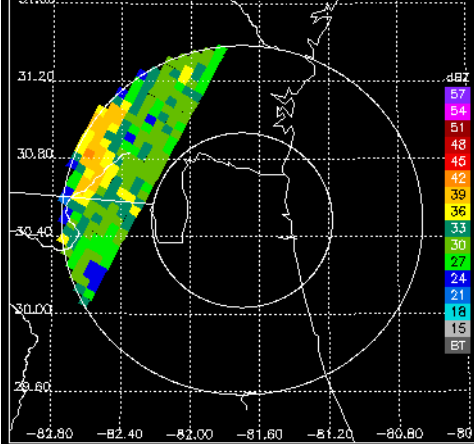
Statistics grouped by proximity to Bright Band:

Surface type	Any Rain Type		Stratiform		Convective		Dataset Statistics		
	DPR-GR	NumPts	DPR-GR	NumPts	DPR-GR	NumPts	AvgDist	DPRMaxZ	GRMaxZ
Below	2.817	191	2.238	142	4.375	49	85.381	43.595	39.073
Within	0.124	630	0.392	503	-0.880	127	82.701	44.231	45.644 @ BB
Above	1.137	109	1.186	72	1.051	37	82.954	29.703	29.284

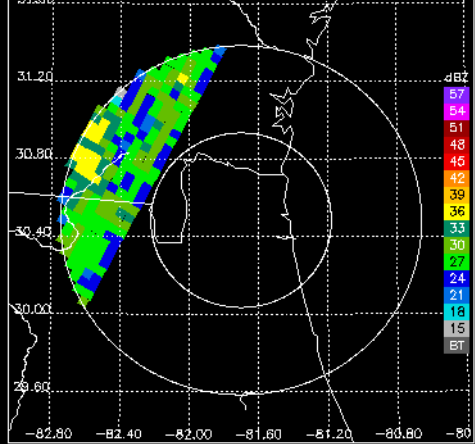
KJAX Zc vs. DPR.KU.NS.V02A >=75% bins above threshold



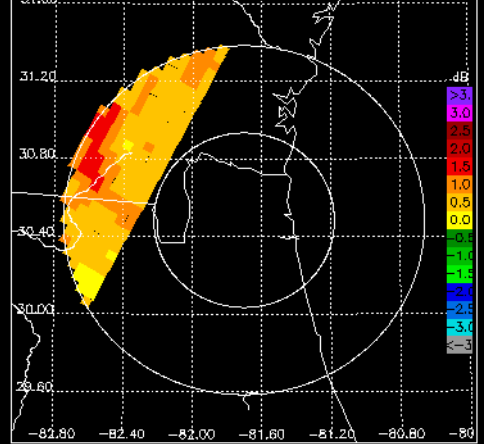
DPR/KU CZ, 0.5° sweep, all valid samples



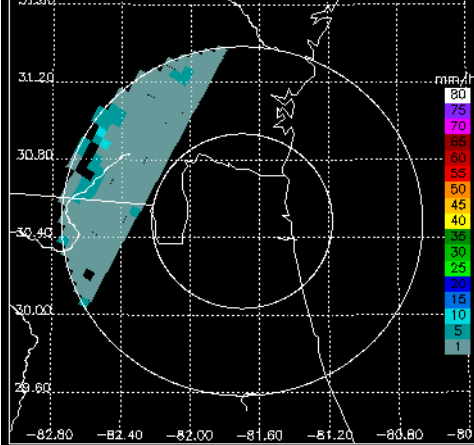
KJAX CZ, 0.5° sweep, all valid samples



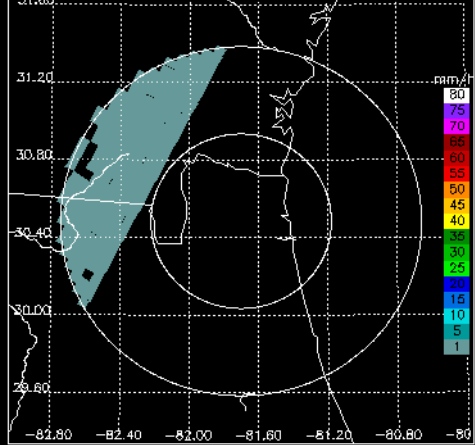
KJAX DR, 0.5° sweep, all valid samples



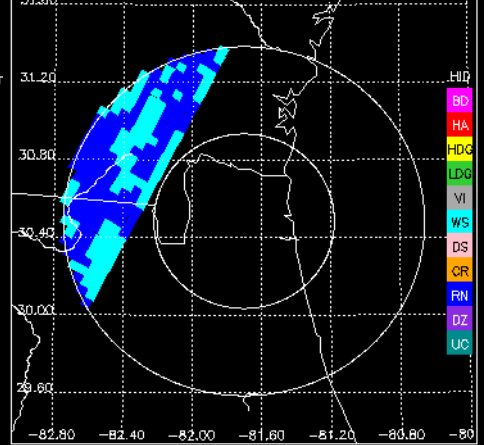
DPR/KU RR, 0.5° sweep, $\geq 75\%$ bins above threshold



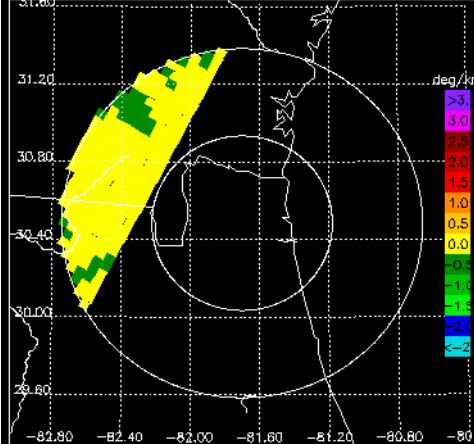
KJAX DP RR, 0.5° sweep, $\geq 75\%$ bins above threshold



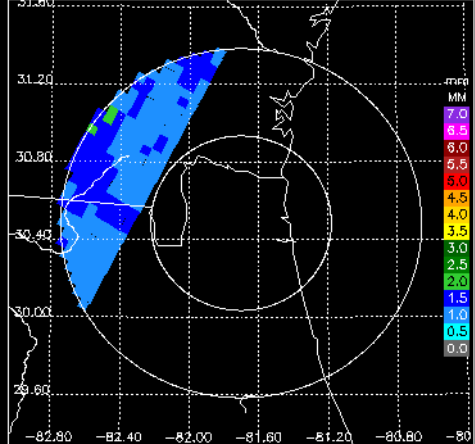
KJAX FH, 0.5° sweep, all valid samples



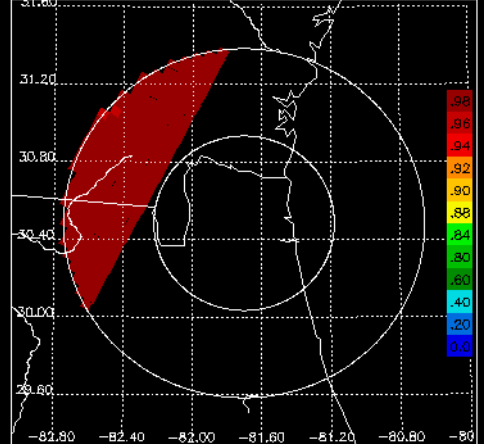
KJAX KD, 0.5° sweep, all valid samples



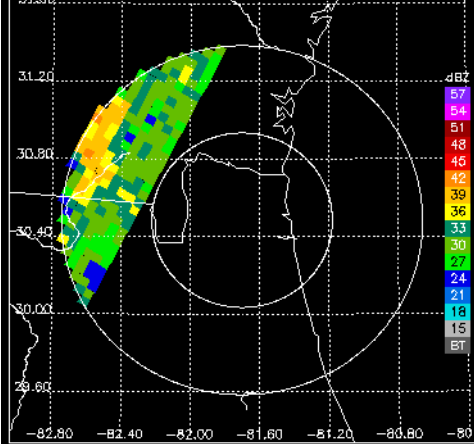
KJAX DO, 0.5° sweep, all valid samples



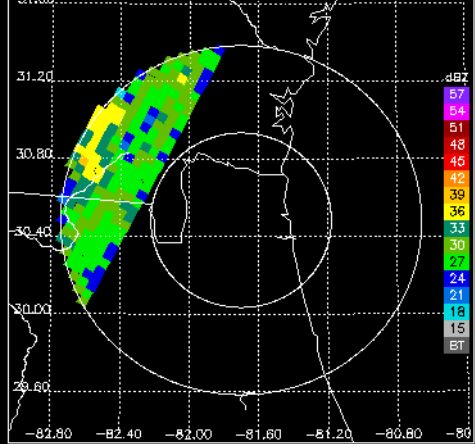
KJAX RH, 0.5° sweep, all valid samples



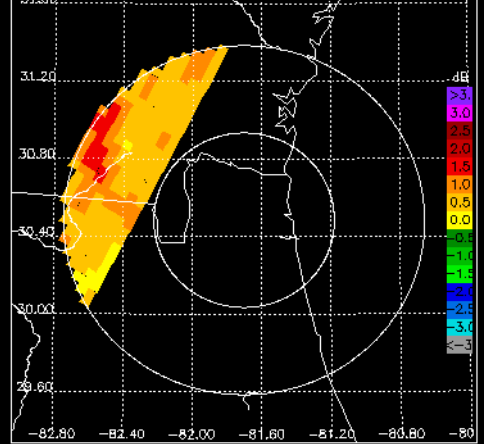
DPR/KU CZ, 0.9° sweep, all valid samples



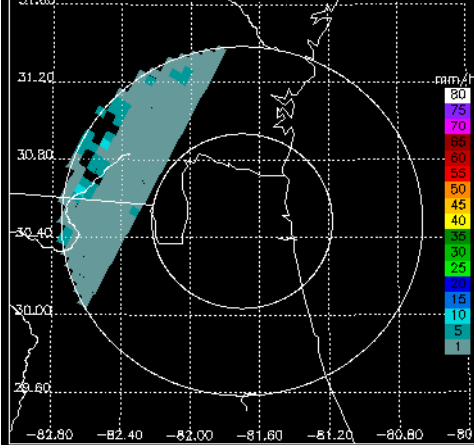
KJAX CZ, 0.9° sweep, all valid samples



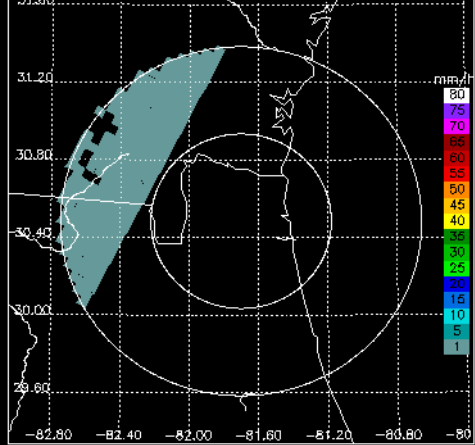
KJAX DR, 0.9° sweep, all valid samples



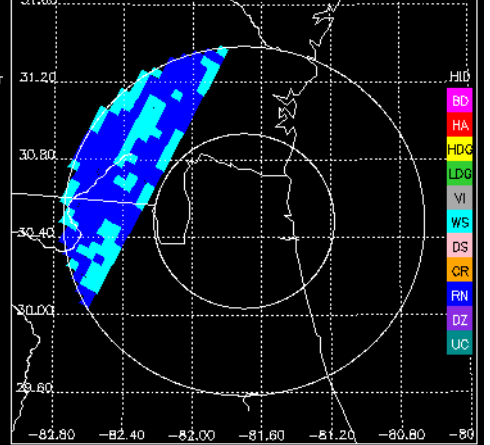
DPR/KU RR, 0.9° sweep, ≥75% bins above threshold



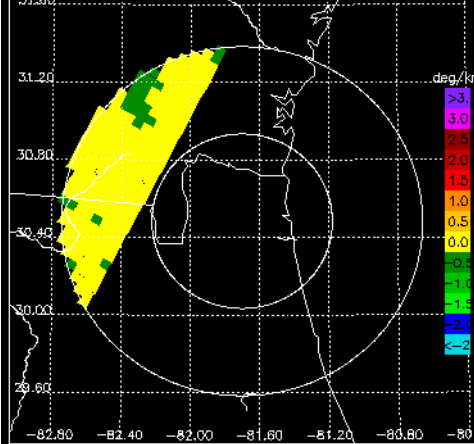
KJAX DP RR, 0.9° sweep, ≥75% bins above threshold



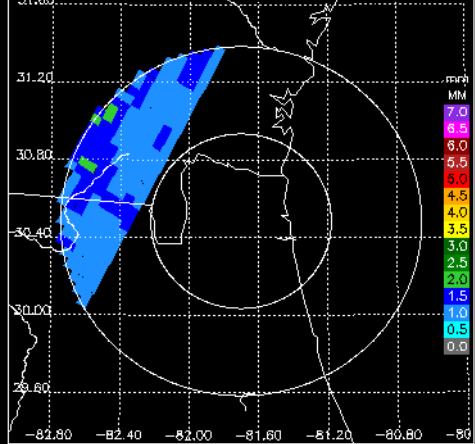
KJAX FH, 0.9° sweep, all valid samples



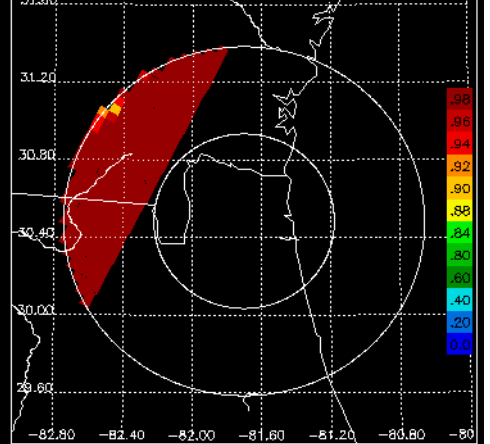
KJAX KD, 0.9° sweep, all valid samples



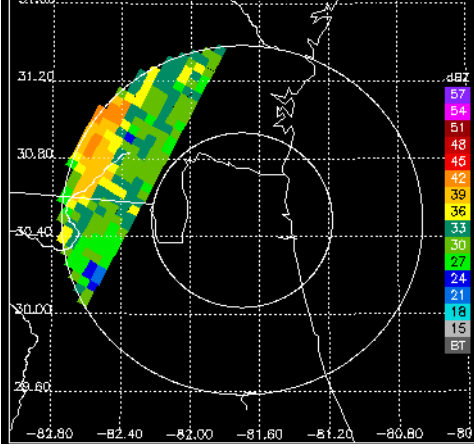
KJAX DO, 0.9° sweep, all valid samples



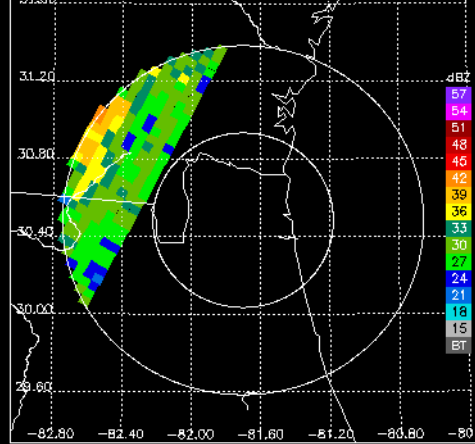
KJAX RH, 0.9° sweep, all valid samples



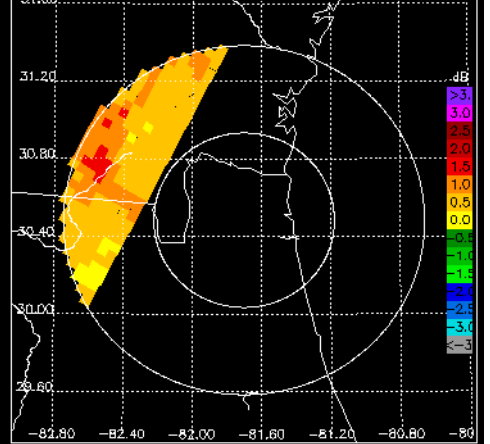
DPR/KU CZ, 1.3° sweep, all valid samples



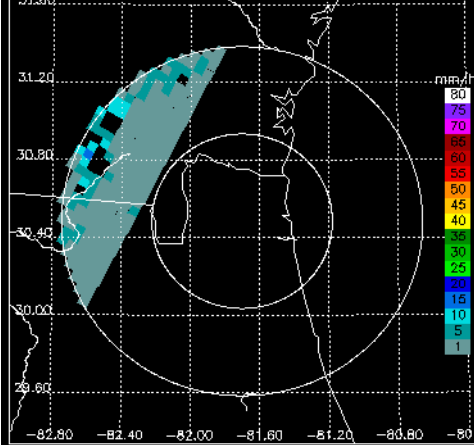
KJAX CZ, 1.3° sweep, all valid samples



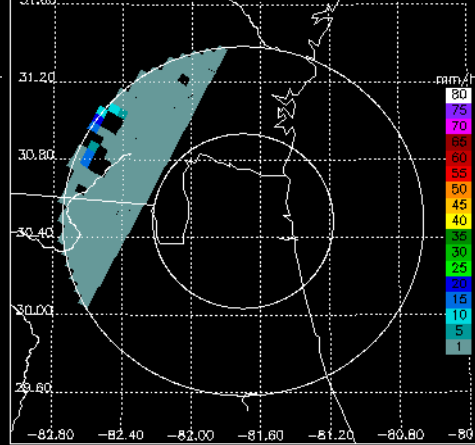
KJAX DR, 1.3° sweep, all valid samples



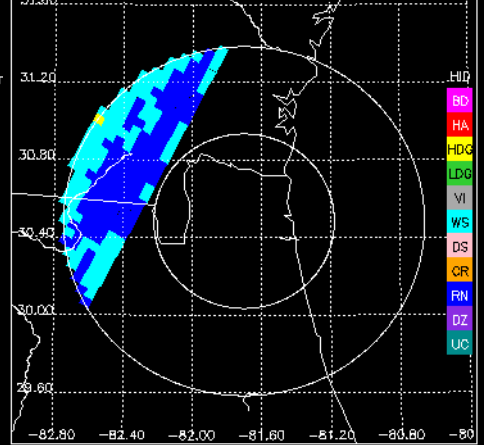
DPR/KU RR, 1.3° sweep, $\geq 75\%$ bins above threshold



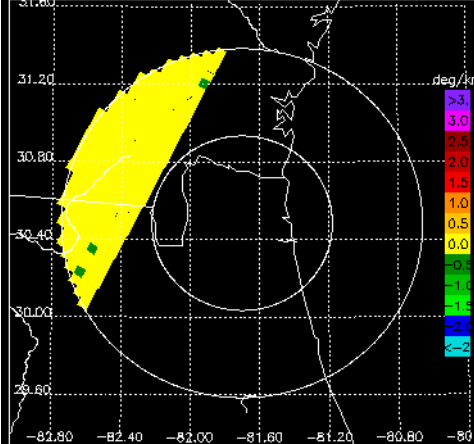
KJAX DP RR, 1.3° sweep, $\geq 75\%$ bins above threshold



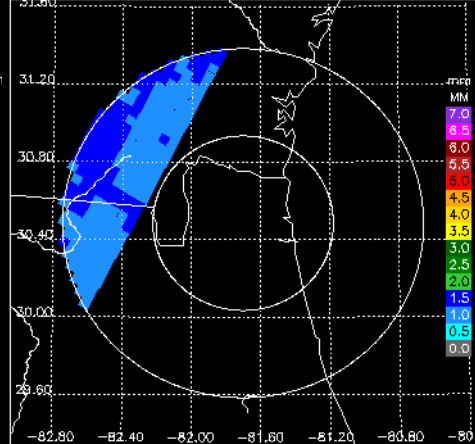
KJAX FH, 1.3° sweep, all valid samples



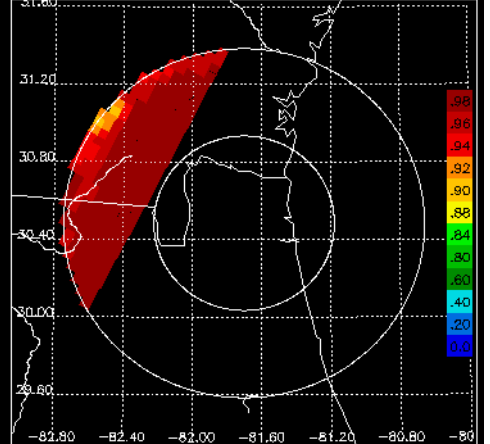
KJAX KD, 1.3° sweep, all valid samples



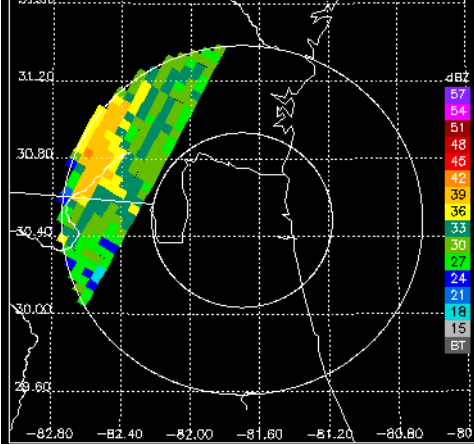
KJAX DO, 1.3° sweep, all valid samples



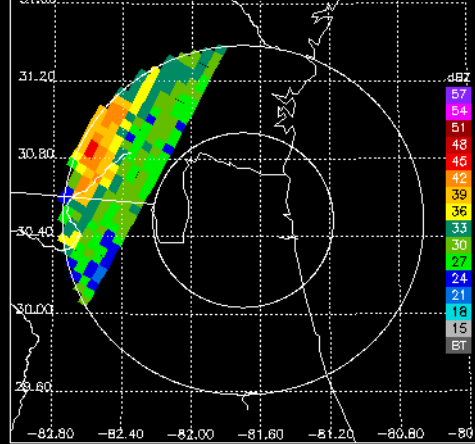
KJAX RH, 1.3° sweep, all valid samples



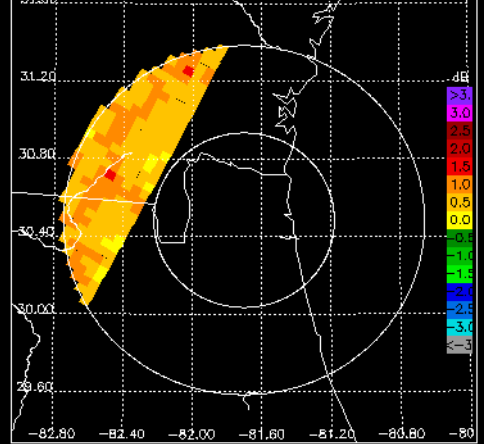
DPR/KU CZ, 1.8° sweep, all valid samples



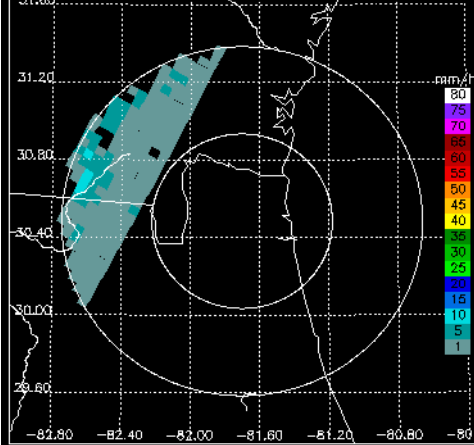
KJAX CZ, 1.8° sweep, all valid samples



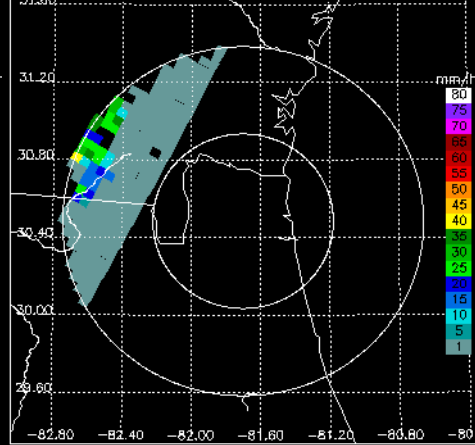
KJAX DR, 1.8° sweep, all valid samples



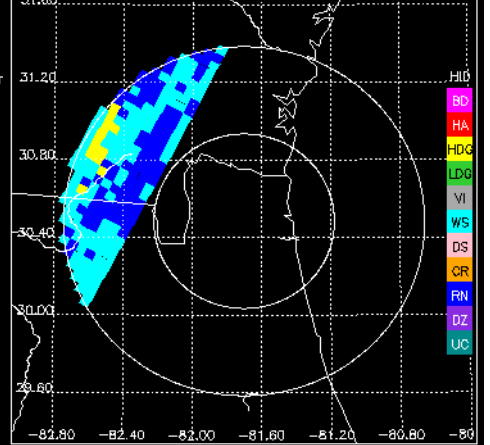
DPR/KU RR, 1.8° sweep, $\geq 75\%$ bins above threshold



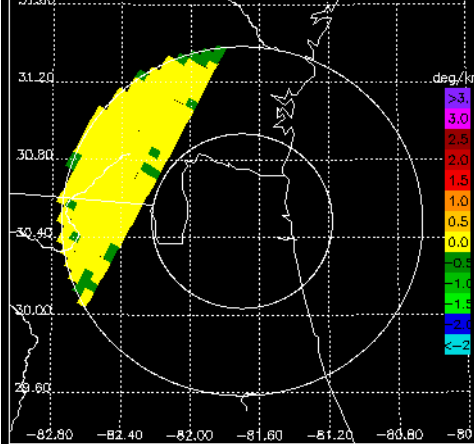
KJAX DP RR, 1.8° sweep, $\geq 75\%$ bins above threshold



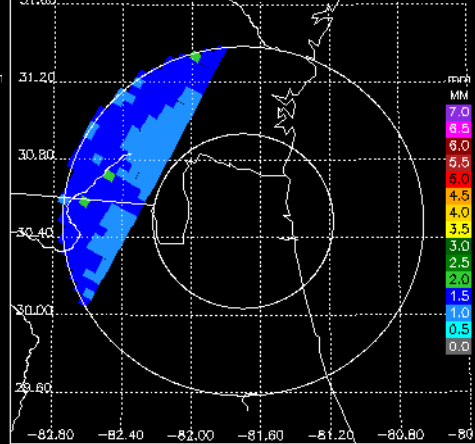
KJAX FH, 1.8° sweep, all valid samples



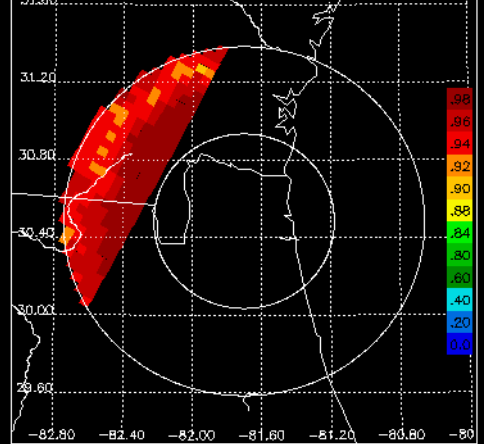
KJAX KD, 1.8° sweep, all valid samples



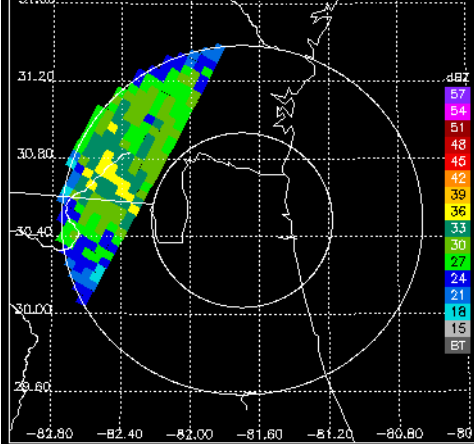
KJAX DO, 1.8° sweep, all valid samples



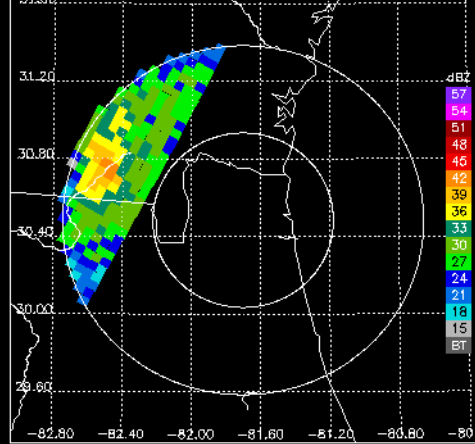
KJAX RH, 1.8° sweep, all valid samples



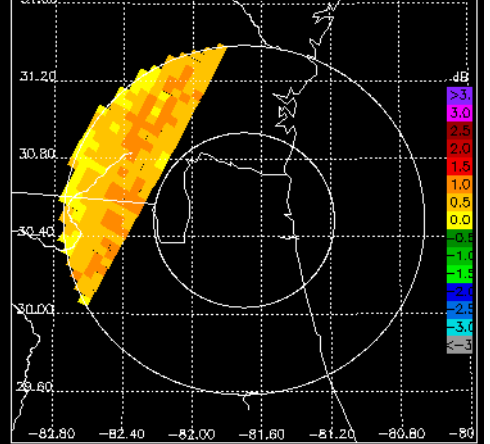
DPR/KU CZ, 2.4° sweep, all valid samples



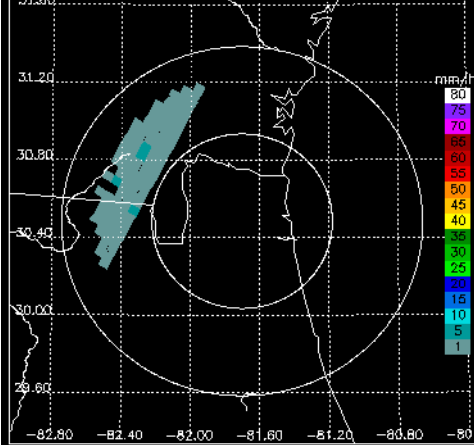
KJAX CZ, 2.4° sweep, all valid samples



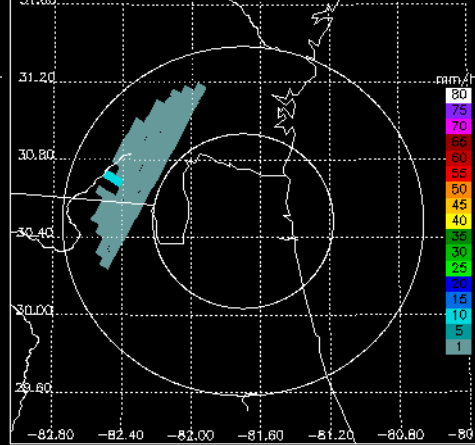
KJAX DR, 2.4° sweep, all valid samples



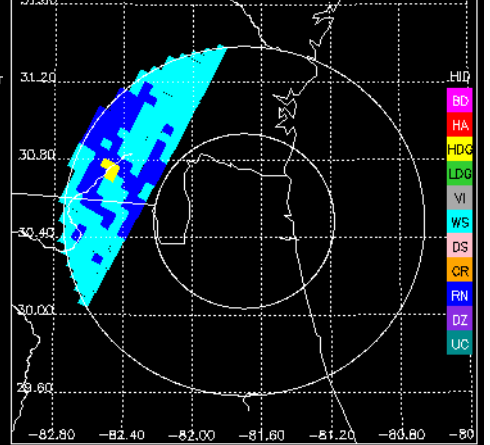
DPR/KU RR, 2.4° sweep, ≥75% bins above threshold



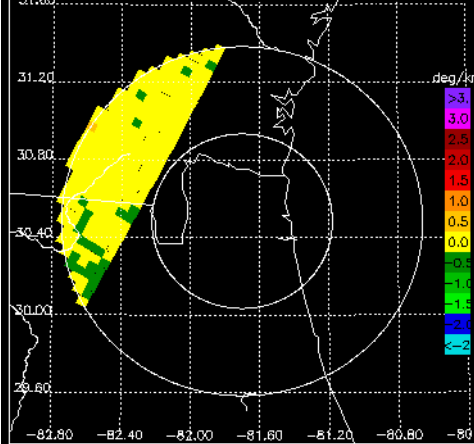
KJAX DP RR, 2.4° sweep, ≥75% bins above threshold



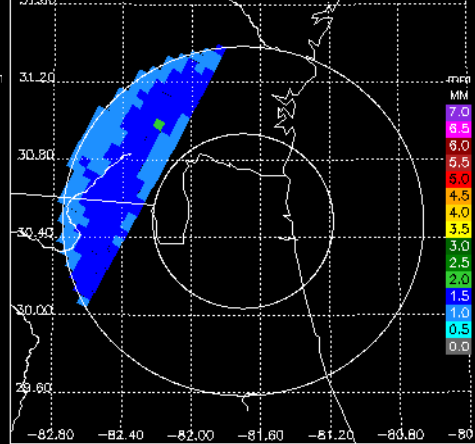
KJAX FH, 2.4° sweep, all valid samples



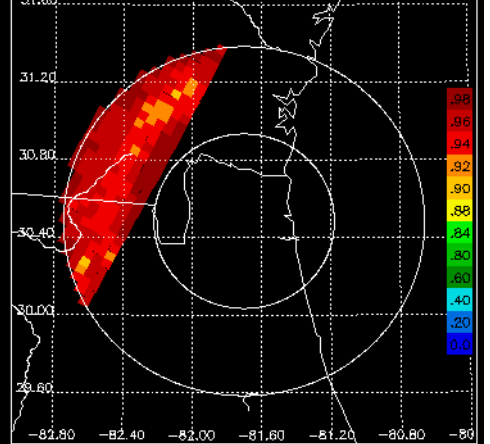
KJAX KD, 2.4° sweep, all valid samples



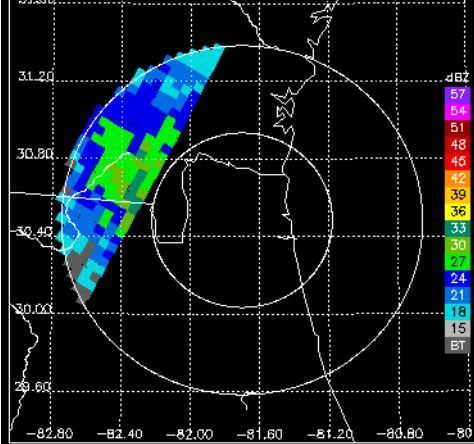
KJAX DO, 2.4° sweep, all valid samples



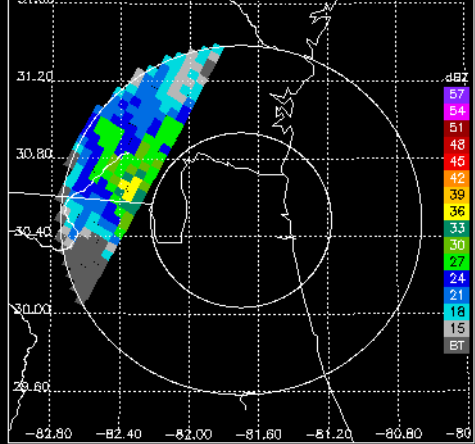
KJAX RH, 2.4° sweep, all valid samples



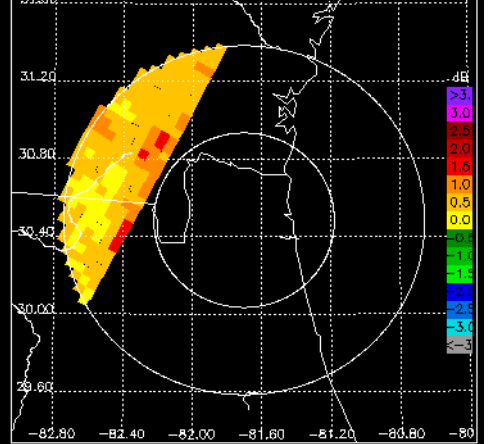
DPR/KU CZ, 3.1° sweep, all valid samples



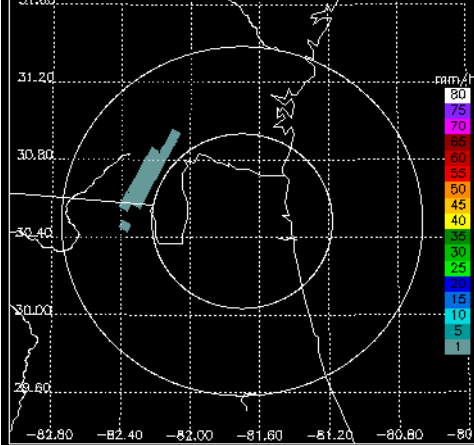
KJAX CZ, 3.1° sweep, all valid samples



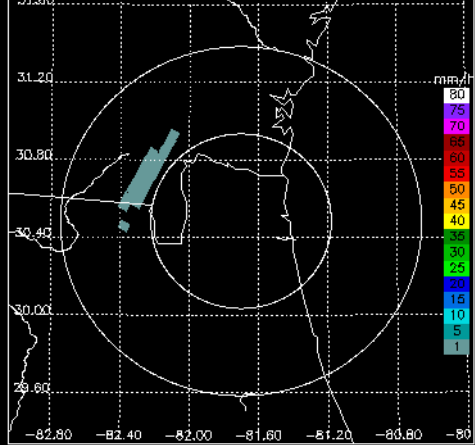
KJAX DR, 3.1° sweep, all valid samples



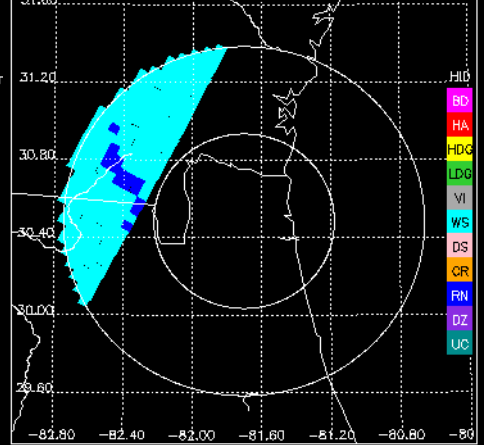
DPR/KU RR, 3.1° sweep, ≥75% bins above threshold



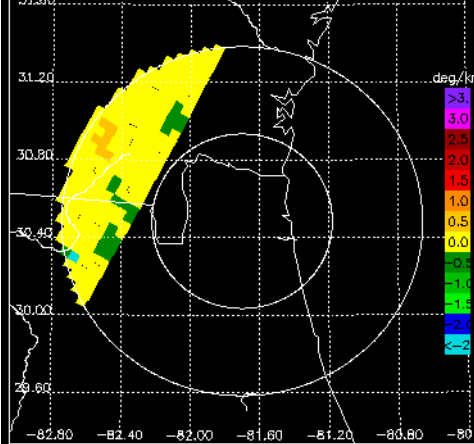
KJAX DP RR, 3.1° sweep, ≥75% bins above threshold



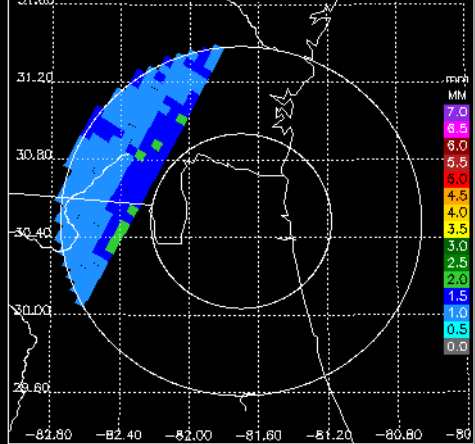
KJAX FH, 3.1° sweep, all valid samples



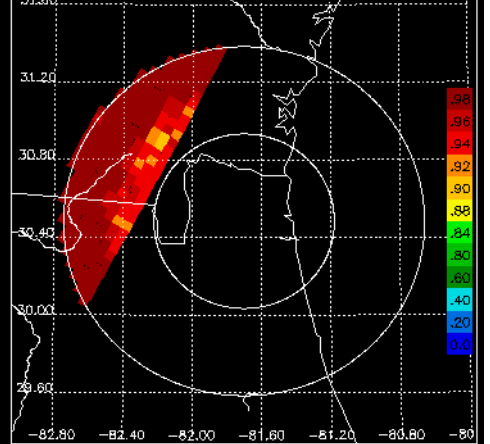
KJAX KD, 3.1° sweep, all valid samples



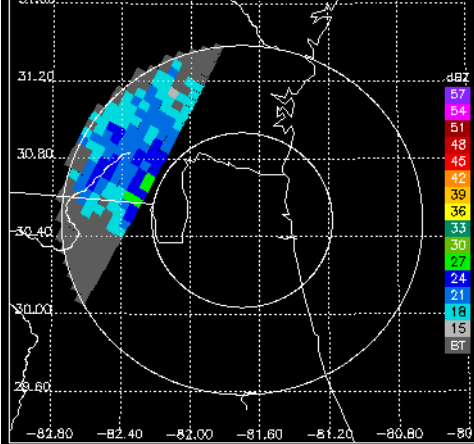
KJAX DO, 3.1° sweep, all valid samples



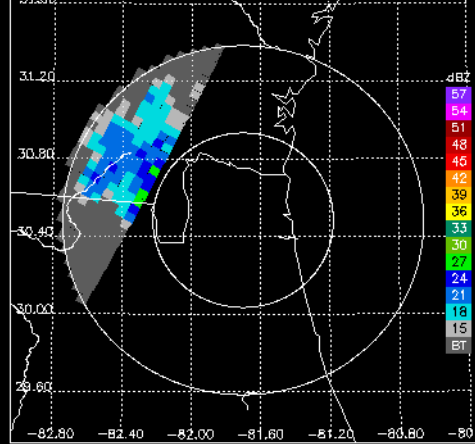
KJAX RH, 3.1° sweep, all valid samples



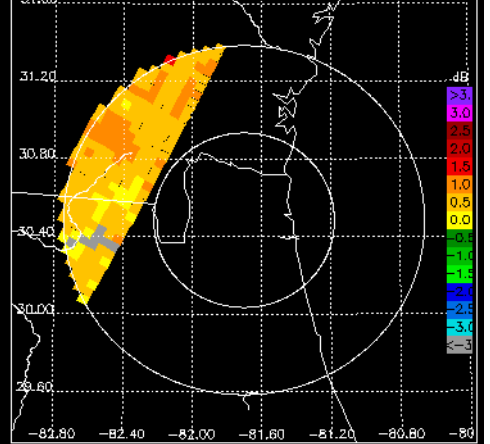
DPR/KU CZ, 4.0° sweep, all valid samples



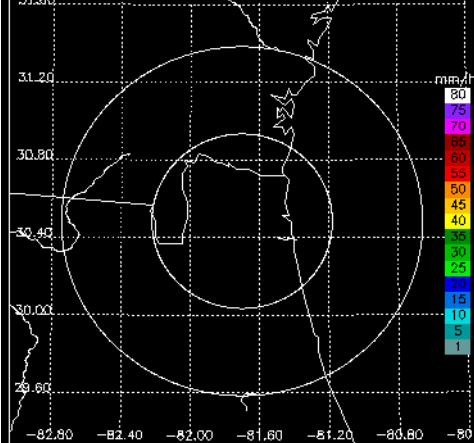
KJAX CZ, 4.0° sweep, all valid samples



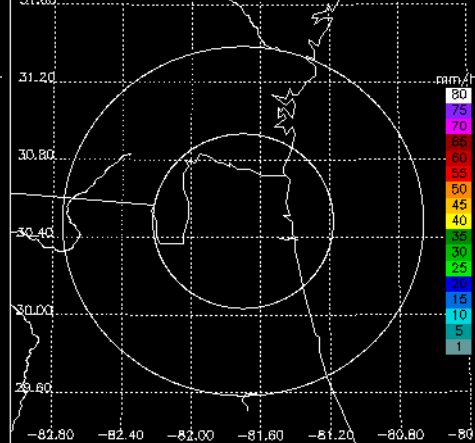
KJAX DR, 4.0° sweep, all valid samples



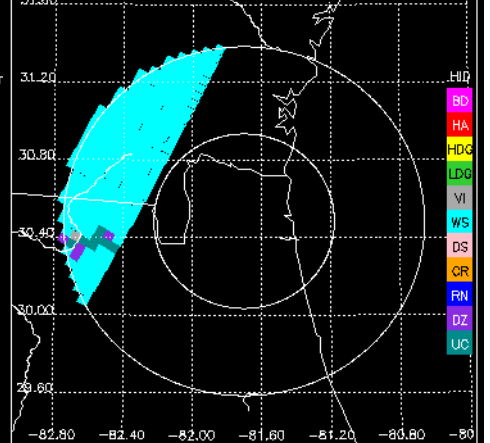
DPR/KU RR, 4.0° sweep, ≥75% bins above threshold



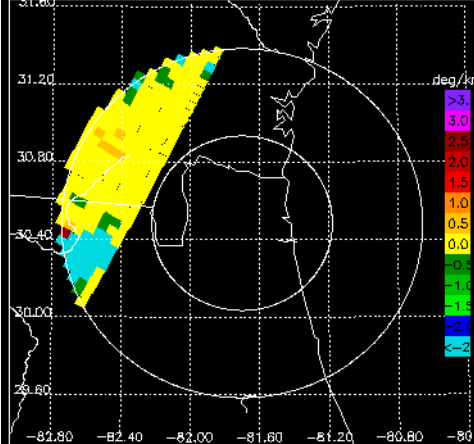
KJAX DP RR, 4.0° sweep, ≥75% bins above threshold



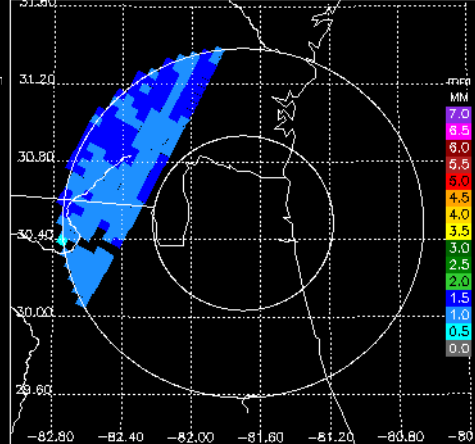
KJAX FH, 4.0° sweep, all valid samples



KJAX KD, 4.0° sweep, all valid samples



KJAX DO, 4.0° sweep, all valid samples



KJAX RH, 4.0° sweep, all valid samples

