

KWAJ Zc vs. DPR.KA.HS.V03B $\geq 70\%$ bins above threshold
 Orbit: 532 -- GR Start Time: 2014-04-02 20:35:45

DPRKA-GR Reflectivity difference statistics (dBZ) - GR Site: KWAJ

Orbit: 532 Version: V03B Swath Type: HS

DPR time = 2014-04-02 20:36:19 GR start time = 2014-04-02 20:35:45

Required percent of above-threshold DPR and GR bins in matched volumes >= 70%

Thresholding by reflectivity cutoffs.

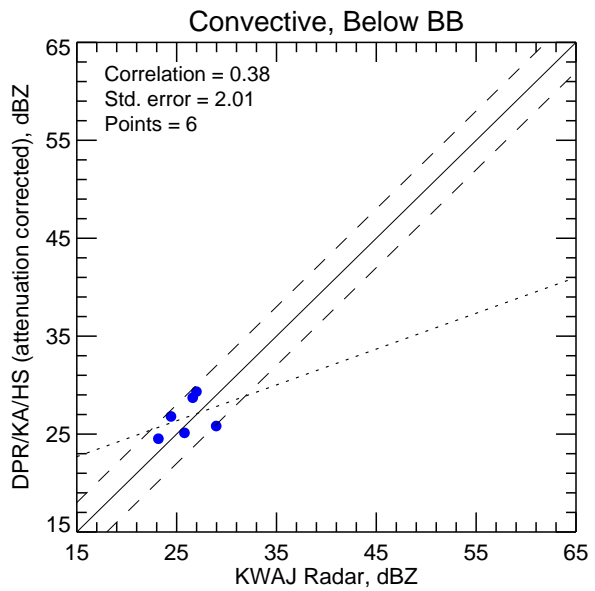
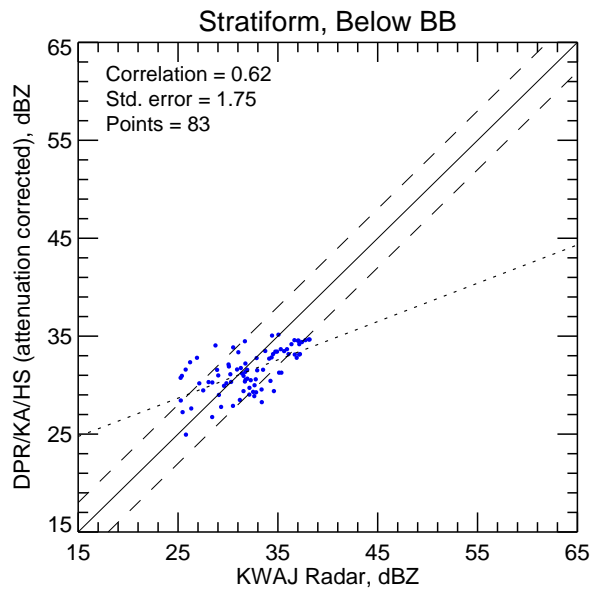
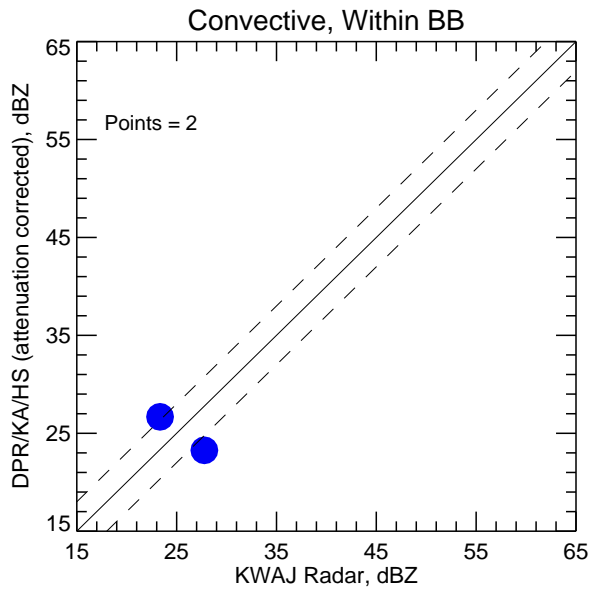
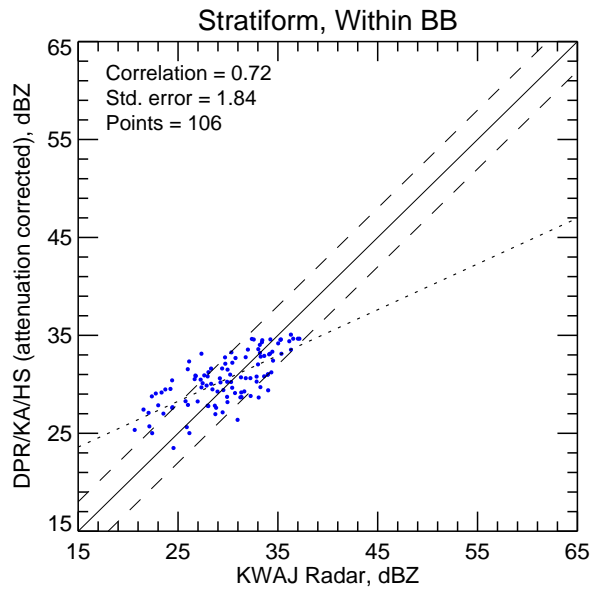
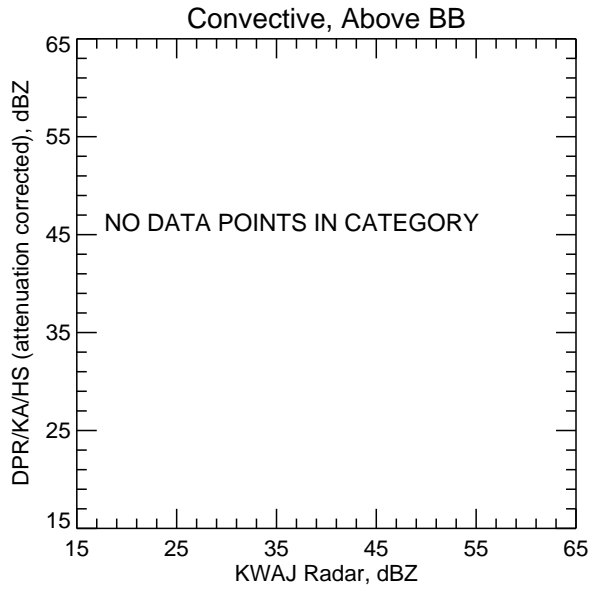
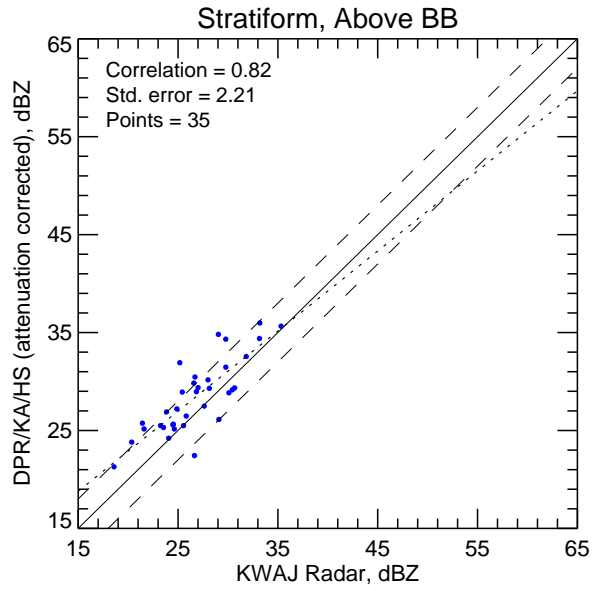
Statistics grouped by fixed height levels (km):

Vert. Layer	Any Rain Type		Stratiform		Convective		Dataset Statistics		
	DPR-GR	NumPts	DPR-GR	NumPts	DPR-GR	NumPts	AvgDist	DPRMaxZ	GRMaxZ
1.5	-0.416	105	-0.439	98	-0.123	7	38.281	35.150	38.174
3.0	0.833	73	0.802	72	3.341	1	40.327	35.071	37.155 @ BB
4.5	1.564	49	1.564	49	-99.999	0	40.642	35.974	35.323
6.0	3.158	3	3.158	3	-99.999	0	42.240	34.813	29.041

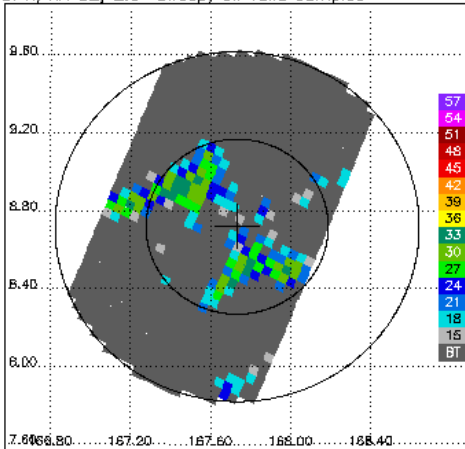
Statistics grouped by proximity to Bright Band:

Surface type	Any Rain Type		Stratiform		Convective		Dataset Statistics		
	DPR-GR	NumPts	DPR-GR	NumPts	DPR-GR	NumPts	AvgDist	DPRMaxZ	GRMaxZ
Below	-0.391	89	-0.475	83	0.663	6	37.335	35.150	38.174
Within	0.703	108	0.734	106	-0.968	2	40.750	35.071	37.155 @ BB
Above	1.806	35	1.806	35	-99.999	0	40.326	35.974	35.323

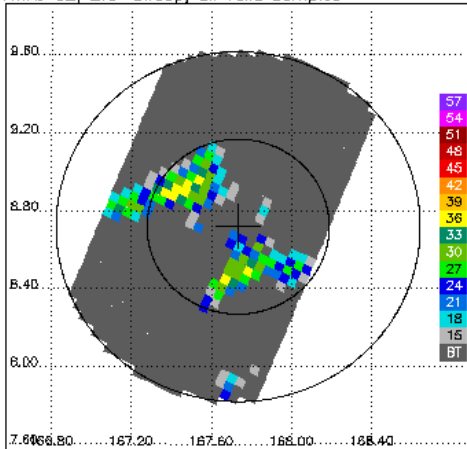
KWAJ Zc vs. DPR.KA.HS.V03B >=70% bins above threshold



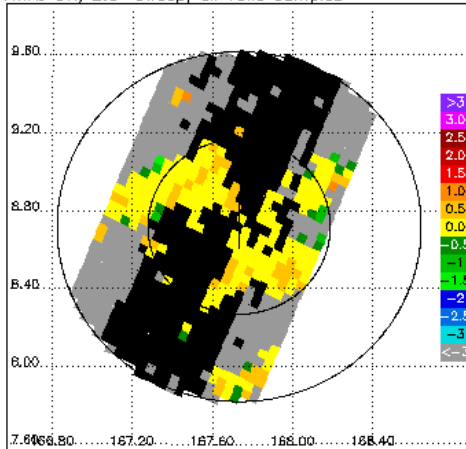
DPR/KA CZ, 2.6° sweep, all valid samples



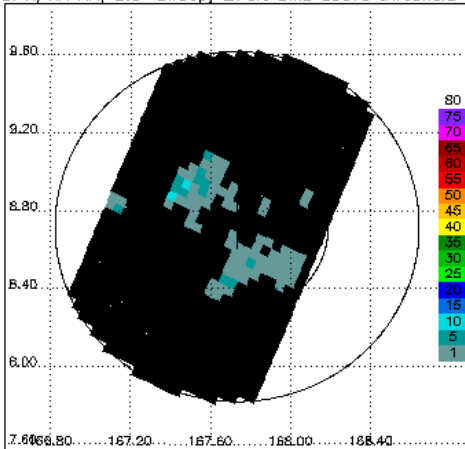
KWAJ CZ, 2.6° sweep, all valid samples



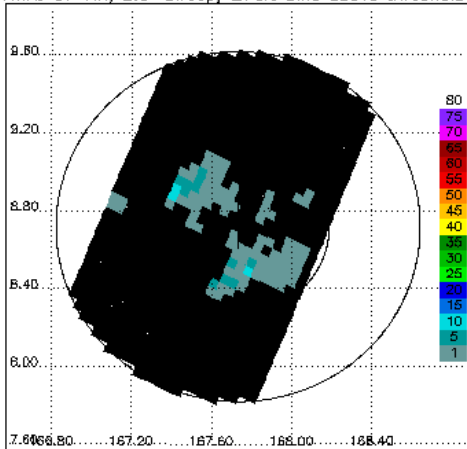
KWAJ DR, 2.6° sweep, all valid samples



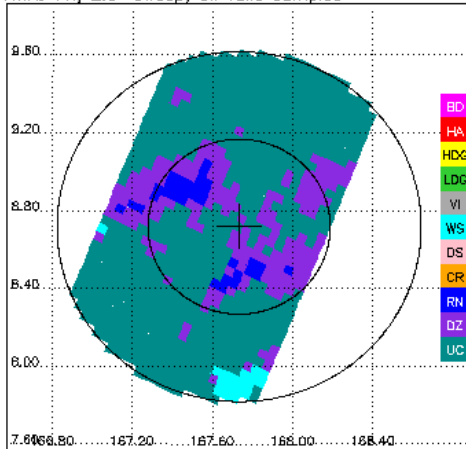
DPR/KA RR, 2.6° sweep, ≥70% bins above threshold



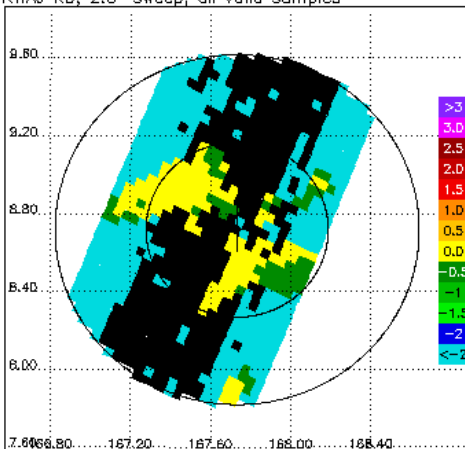
KWAJ DP RR, 2.6° sweep, ≥70% bins above threshold



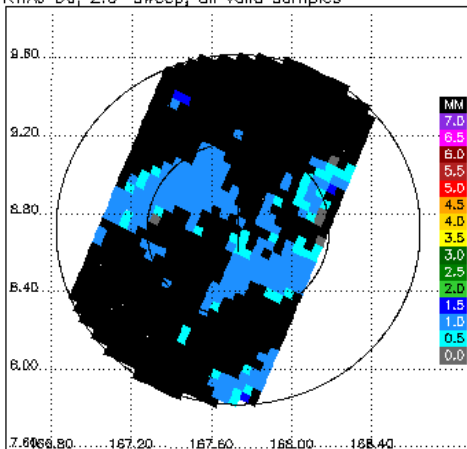
KWAJ FH, 2.6° sweep, all valid samples



KWAJ KD, 2.6° sweep, all valid samples



KWAJ D0, 2.6° sweep, all valid samples



KWAJ RH, 2.6° sweep, all valid samples

