

KWAJ Zc vs. DPR.KA.MS.V03B  $\geq 70\%$  bins above threshold  
 Orbit: 2776 -- GR Start Time: 2014-08-25 02:31:59

DPRKA-GR Reflectivity difference statistics (dBZ) - GR Site: KWAJ

Orbit: 2776 Version: V03B Swath Type: MS

DPR time = 2014-08-25 02:27:54 GR start time = 2014-08-25 02:31:59

Required percent of above-threshold DPR and GR bins in matched volumes >= 70%

Thresholding by reflectivity cutoffs.

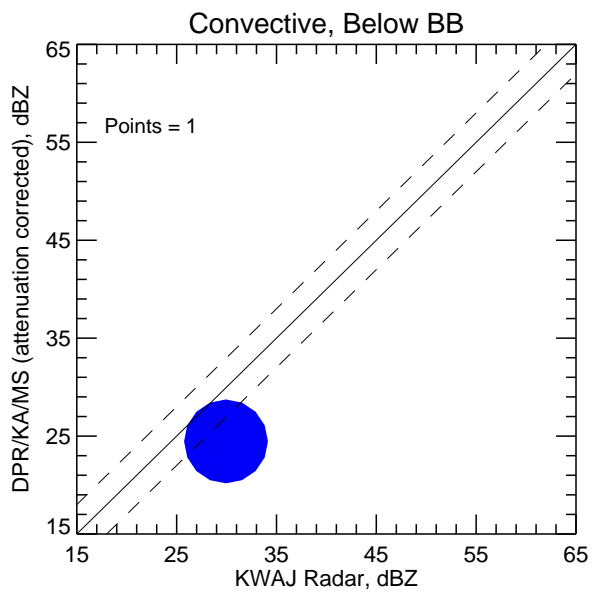
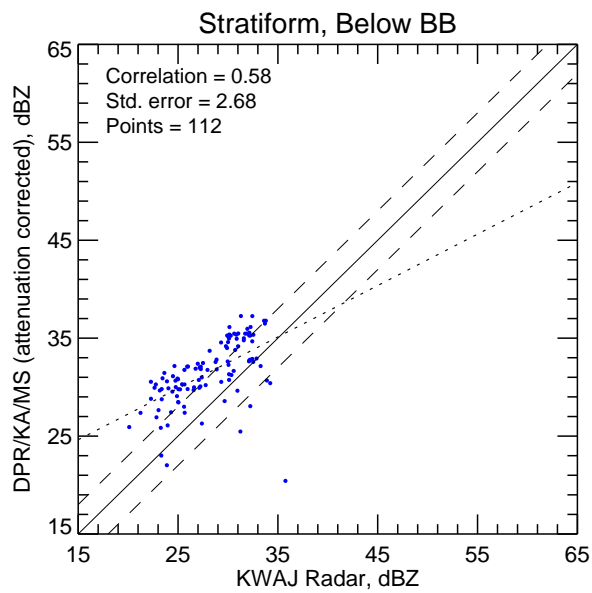
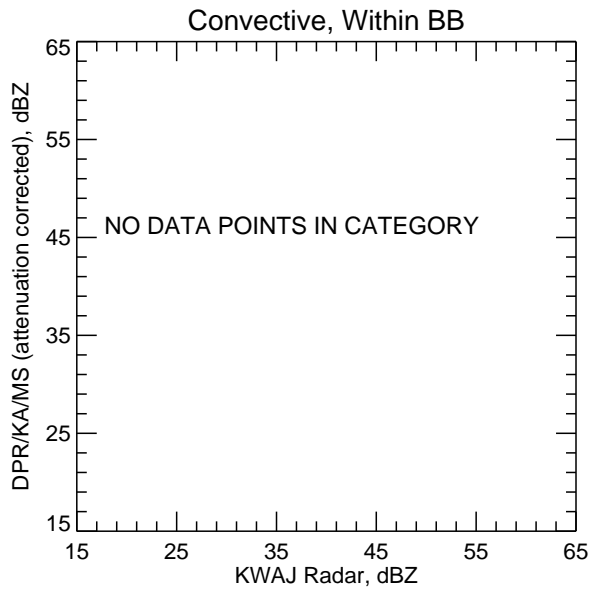
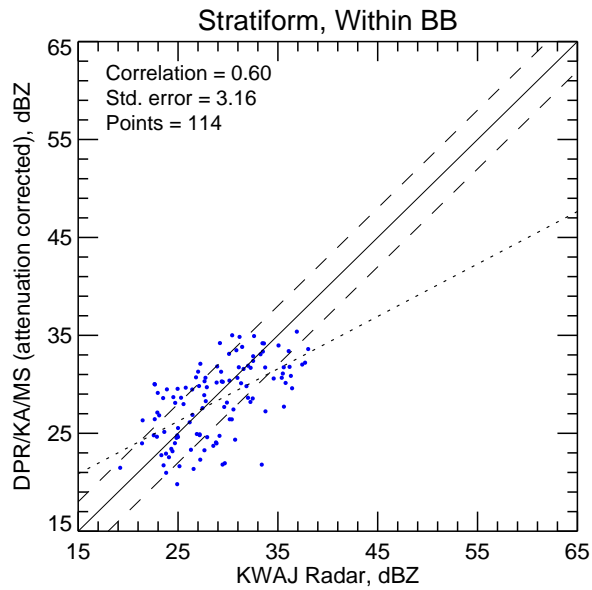
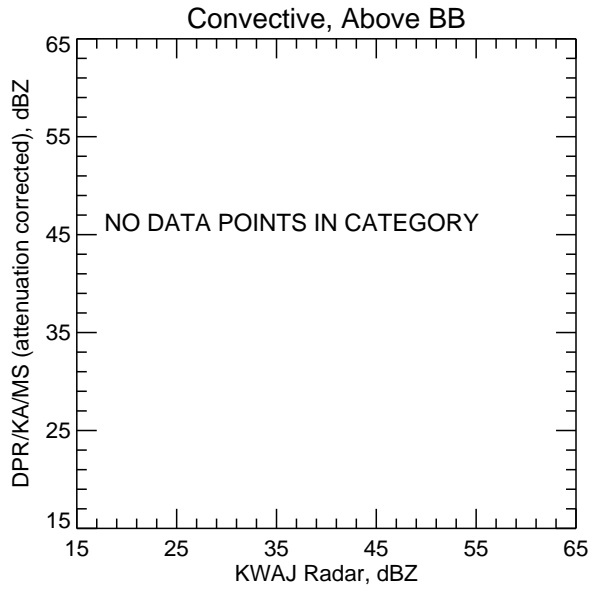
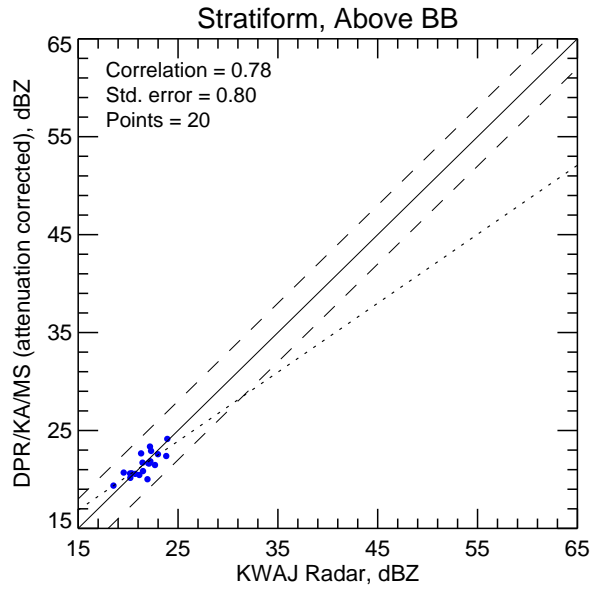
Statistics grouped by fixed height levels (km):

Vert. Layer	Any Rain Type		Stratiform		Convective		Dataset Statistics		
	DPR-GR	NumPts	DPR-GR	NumPts	DPR-GR	NumPts	AvgDist	DPRMaxZ	GRMaxZ
1.5	2.168	72	2.356	71	-5.487	1	57.648	37.257	35.758
3.0	2.591	77	2.591	77	-99.999	0	57.812	36.489	33.706 @ BB
4.5	-2.134	69	-2.134	69	-99.999	0	56.035	35.380	38.035 @ BB
6.0	-0.486	25	-0.486	25	-99.999	0	57.217	25.536	24.998
7.5	0.836	1	0.836	1	-99.999	0	82.055	19.369	18.534

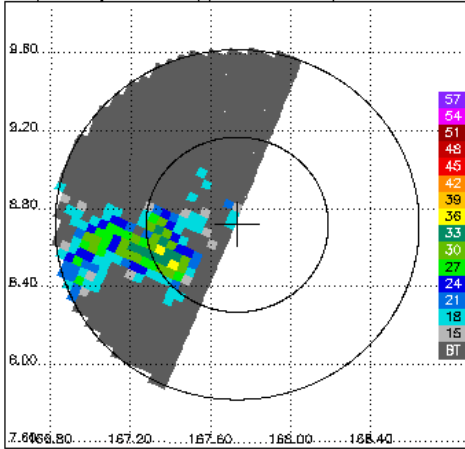
Statistics grouped by proximity to Bright Band:

Surface type	Any Rain Type		Stratiform		Convective		Dataset Statistics		
	DPR-GR	NumPts	DPR-GR	NumPts	DPR-GR	NumPts	AvgDist	DPRMaxZ	GRMaxZ
Below	2.675	113	2.803	112	-5.487	1	56.731	37.257	35.758
Within	-0.741	114	-0.741	114	-99.999	0	58.230	35.380	38.035 @ BB
Above	-0.028	20	-0.028	20	-99.999	0	55.782	24.138	23.924

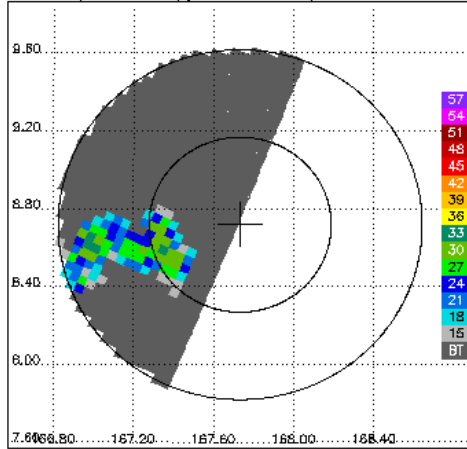
KWAJ Zc vs. DPR.KA.MS.V03B >=70% bins above threshold



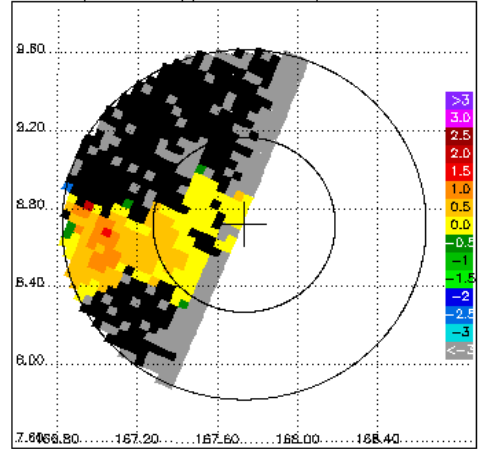
DPR/KA CZ, 2.6° sweep, all valid samples



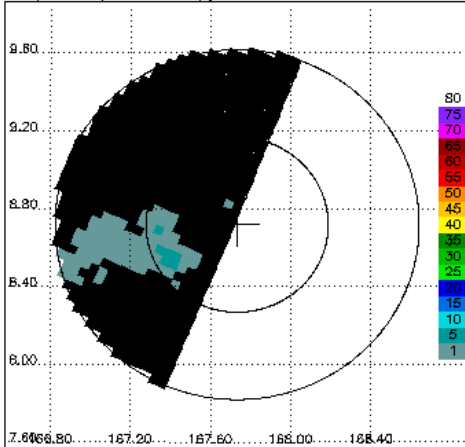
KWAJ CZ, 2.6° sweep, all valid samples



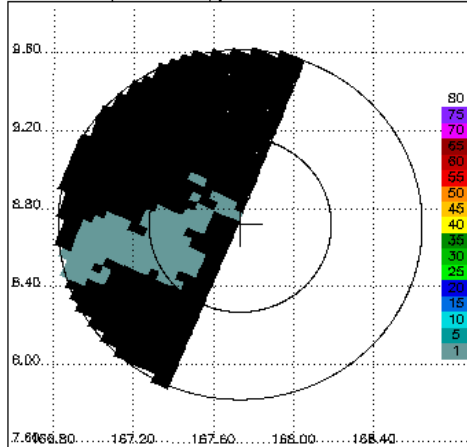
KWAJ DR, 2.6° sweep, all valid samples



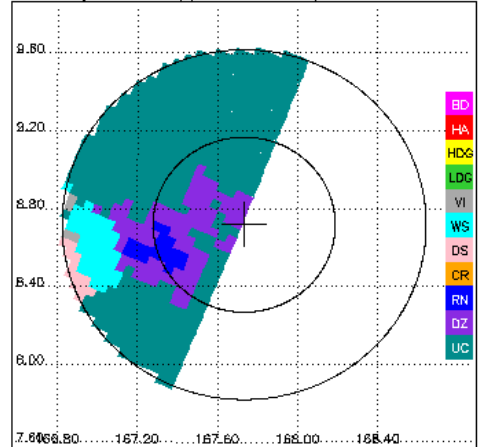
DPR/KA RR, 2.6° sweep, ≥70% bins above threshold



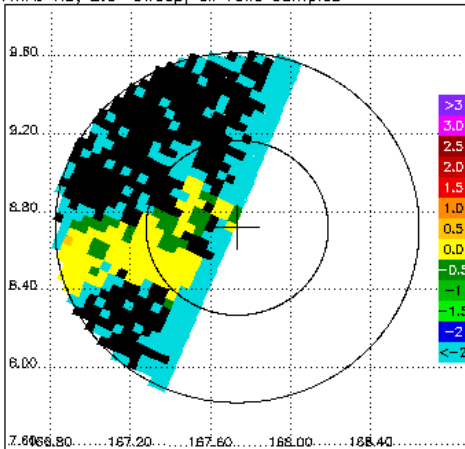
KWAJ DP RR, 2.6° sweep, ≥70% bins above threshold



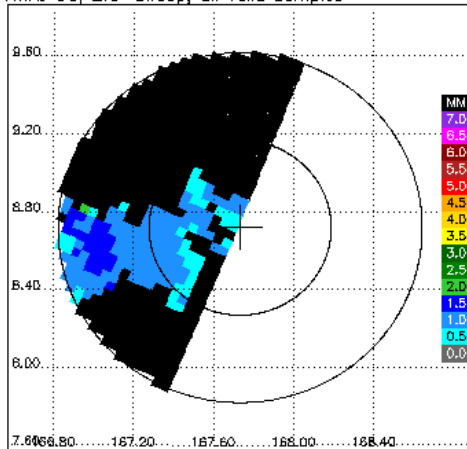
KWAJ FH, 2.6° sweep, all valid samples



KWAJ KD, 2.6° sweep, all valid samples



KWAJ DQ, 2.6° sweep, all valid samples



KWAJ RH, 2.6° sweep, all valid samples

