

KLGX Ku-adjusted DSD vs. DPR 2ADPR/NS/V04A -- All non-missing pairs

Orbit: 9527 -- GR Start Time: 2015-11-02 00:32:31

DPR 2ADPR-GR Reflectivity difference statistics (dBZ) - GR Site: KLGX
 Orbit: 9527 Version: V04A Swath Type: NS
 DPR time = 2015-11-02 00:33:57 GR start time = 2015-11-02 00:32:31
 Required percent of above-threshold DPR and GR bins in matched volumes >= 0%
 Filtering by GR_blockage Land/Ocean Category criteria.
 GR reflectivity has S-to-Ku frequency adjustments applied.

Mean Reflectivity Statistics grouped by fixed height levels (km):

Vert. Layer	Any Rain Type		Stratiform		Convective		Dataset Statistics		
	DPR-GR	NumPts	DPR-GR	NumPts	DPR-GR	NumPts	AvgDist	DPRMaxZ	GRMaxZ
1.0	-1.513	12	-1.513	12	-99.999	0	35.048	25.030	30.866 @ BB
2.0	1.234	9	1.234	9	-99.999	0	32.269	22.508	25.550 @ BB
3.0	1.216	8	1.216	8	-99.999	0	26.009	24.115	24.619
4.0	1.200	8	1.200	8	-99.999	0	32.671	24.167	23.603
5.0	1.371	2	1.371	2	-99.999	0	26.350	19.265	17.429

No above-threshold points at height 6.000

No above-threshold points at height 7.000

Mean Reflectivity Statistics grouped by proximity to Bright Band:

Surface type	Any Rain Type		Stratiform		Convective		Dataset Statistics		
	DPR-GR	NumPts	DPR-GR	NumPts	DPR-GR	NumPts	AvgDist	DPRMaxZ	GRMaxZ
Below	2.448	7	2.448	7	-99.999	0	25.316	21.840	23.661

GR Dm field is being directly compared to DPR Dm.

Mean Drop Diameter (Dm, in mm) Statistics grouped by fixed height levels (km):

Vert. Layer	Any Rain Type		Stratiform		Convective		Dataset Statistics		
	DPR-GR	NumPts	DPR-GR	NumPts	DPR-GR	NumPts	AvgDist	DPRMaxDm	GRMaxDm
1.0	-0.225	2	-0.225	2	-99.999	0	23.845	1.090	1.374 @ BB
No above-threshold points at height 2.000									
No above-threshold points at height 3.000									
No above-threshold points at height 4.000									
No above-threshold points at height 5.000									
No above-threshold points at height 6.000									
No above-threshold points at height 7.000									

Mean Drop Diameter (Dm, in mm) Statistics grouped by proximity to Bright Band:

Surface type	Any Rain Type		Stratiform		Convective		Dataset Statistics		
	DPR-GR	NumPts	DPR-GR	NumPts	DPR-GR	NumPts	AvgDist	DPRMaxDm	GRMaxDm
Below	-0.356	9	-0.356	9	-99.999	0	26.039	1.090	1.594

GR NW field is being directly compared to DPR Nw.

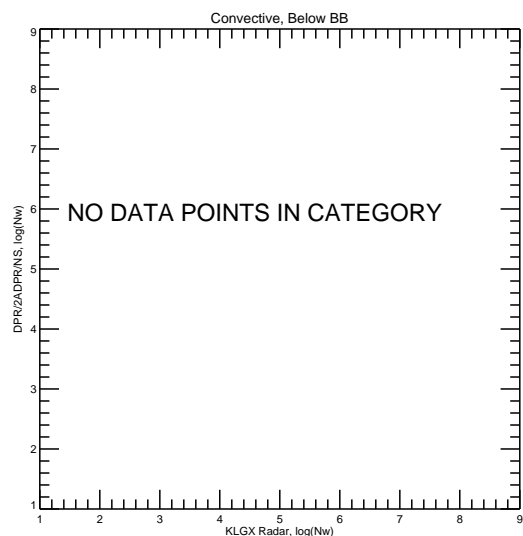
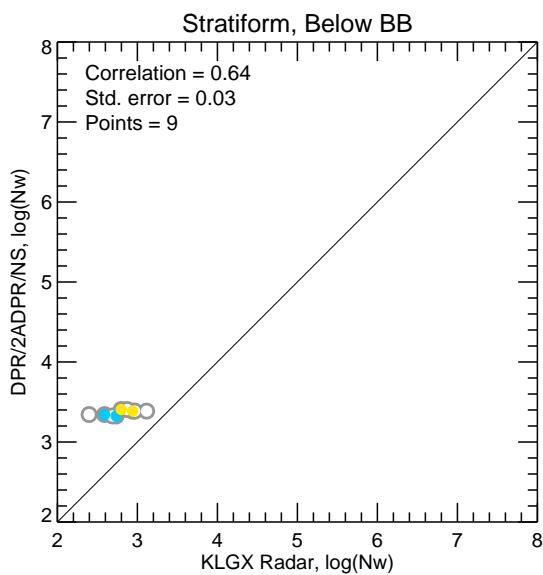
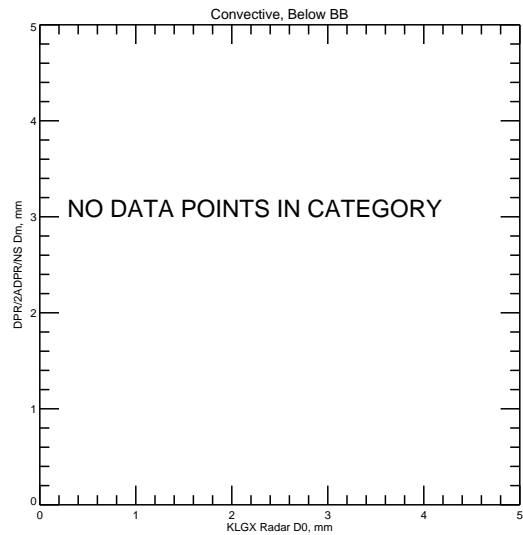
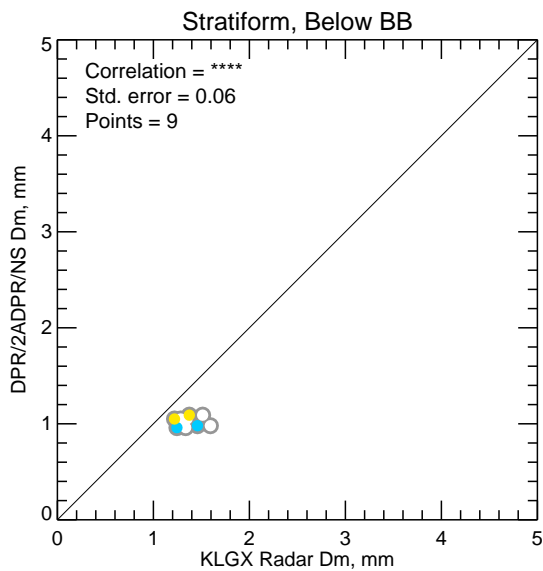
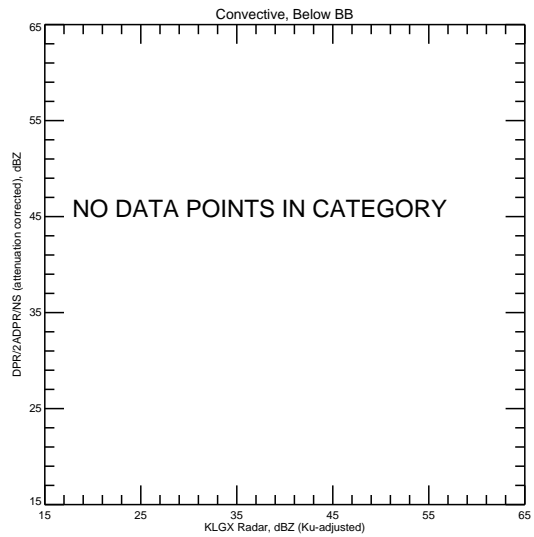
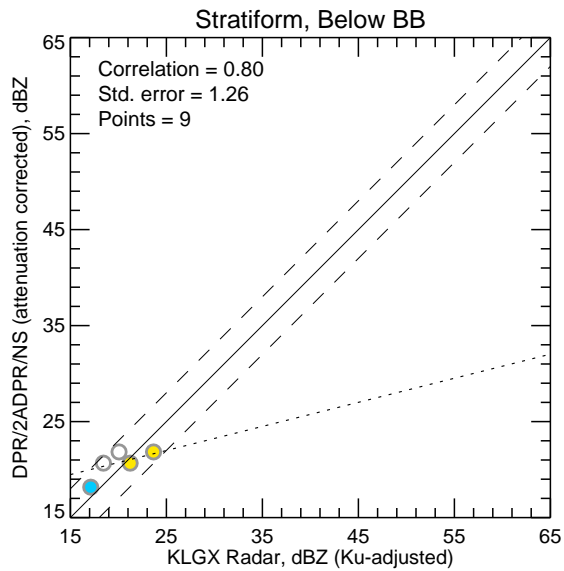
Mean Normalized Intercept Parameter (log10(Nw)) Statistics grouped by fixed height levels (km):

Vert. Layer	Any Rain Type		Stratiform		Convective		Dataset Statistics		
	DPR-GR	NumPts	DPR-GR	NumPts	DPR-GR	NumPts	AvgDist	DPRMaxNw	GRMaxNw
1.0	0.524	2	0.524	2	-99.999	0	23.845	3.406	2.941 @ BB
No above-threshold points at height 2.000									
No above-threshold points at height 3.000									
No above-threshold points at height 4.000									
No above-threshold points at height 5.000									
No above-threshold points at height 6.000									
No above-threshold points at height 7.000									

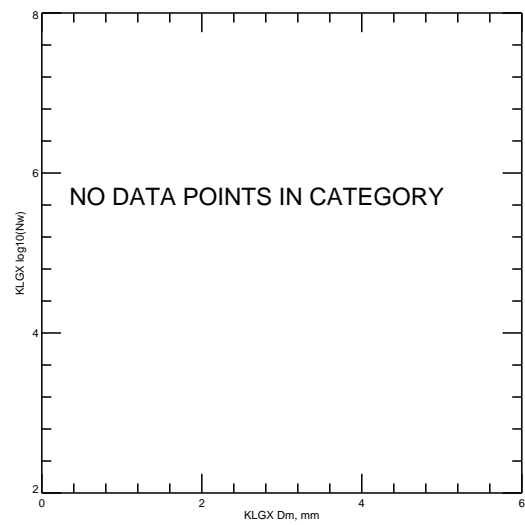
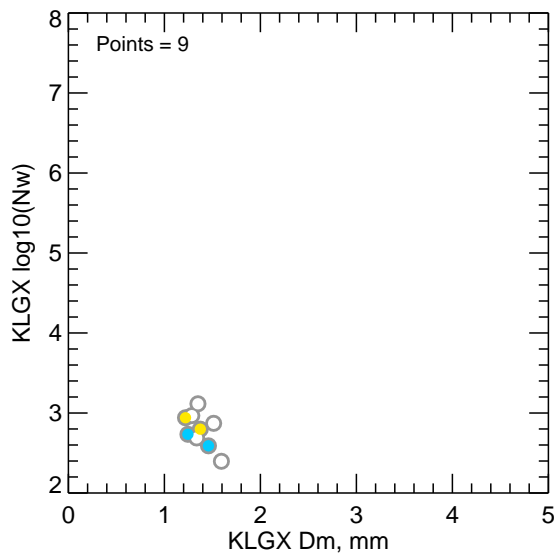
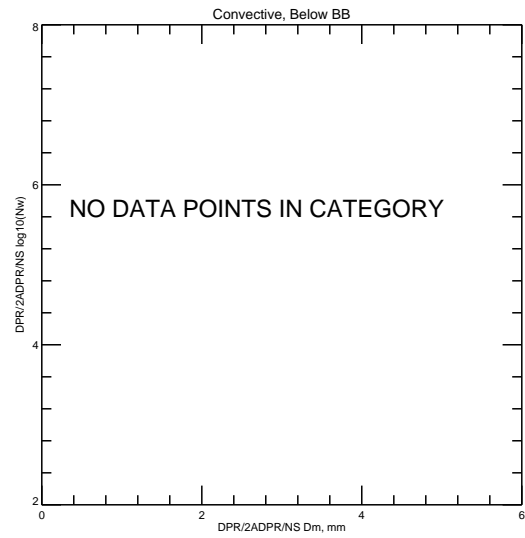
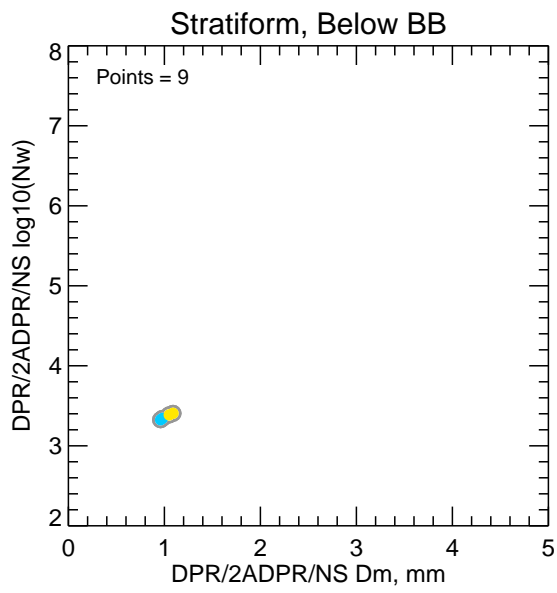
Mean Normalized Intercept Parameter (log10(Nw)) Statistics grouped by proximity to Bright Band:

Surface type	Any Rain Type		Stratiform		Convective		Dataset Statistics		
	DPR-GR	NumPts	DPR-GR	NumPts	DPR-GR	NumPts	AvgDist	DPRMaxNw	GRMaxNw
Below	0.588	9	0.588	9	-99.999	0	26.039	3.406	3.115

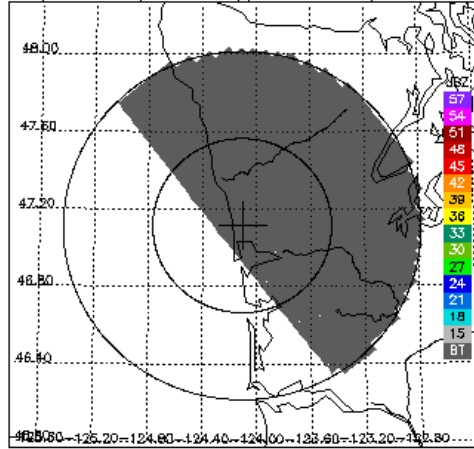
KLGX Ku-adjusted DSD vs. DPR 2ADPR/NS/V04A -- All non-missing pairs



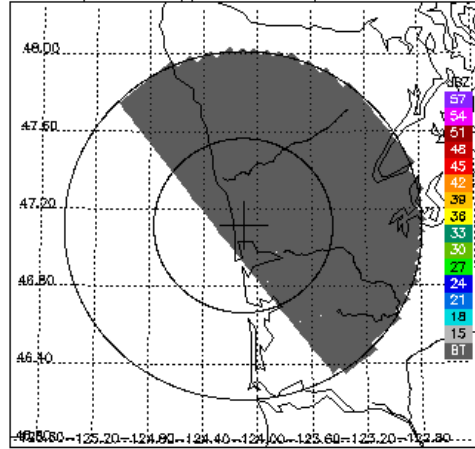
Dm vs. $\log_{10}(N_w)$ for DPR 2ADPR/NS/V04A and KLGX -- All non-missing pairs



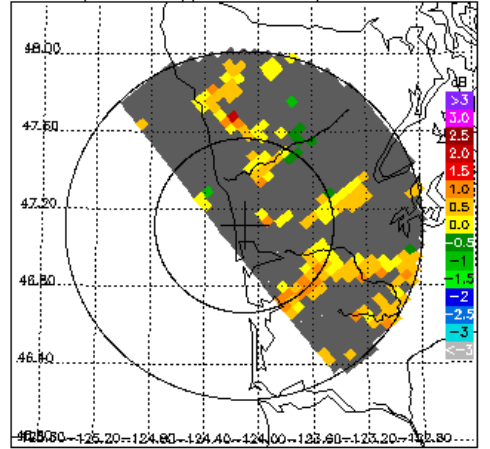
DPR/2ADPR CZ, 0.2° sweep, all valid samples



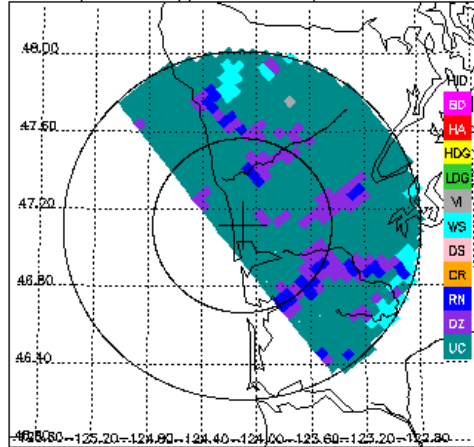
KLGX CZ, 0.2° sweep, all valid samples



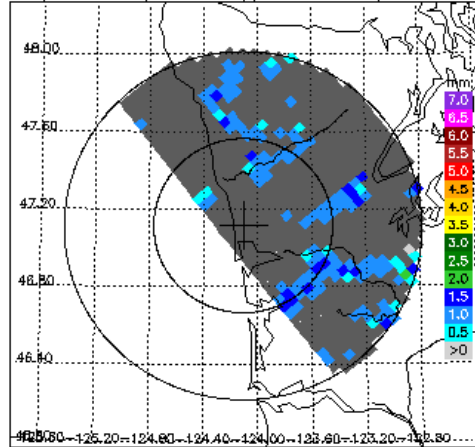
KLGX DR, 0.2° sweep, all valid samples



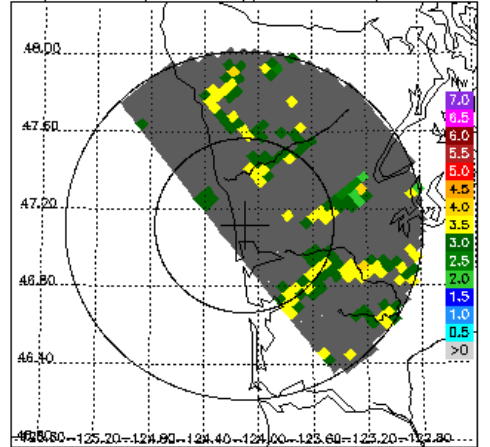
KLGX FH, 0.2° sweep, all valid samples



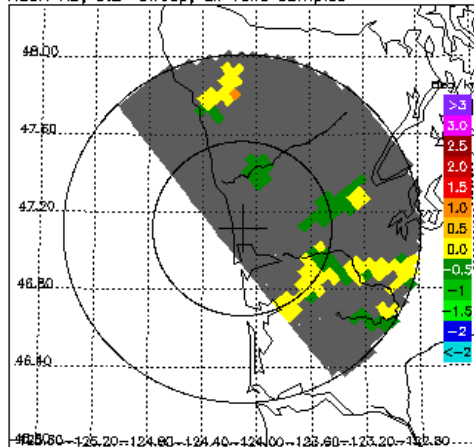
DPR/2ADPR Dm, 0.2° sweep, all valid samples



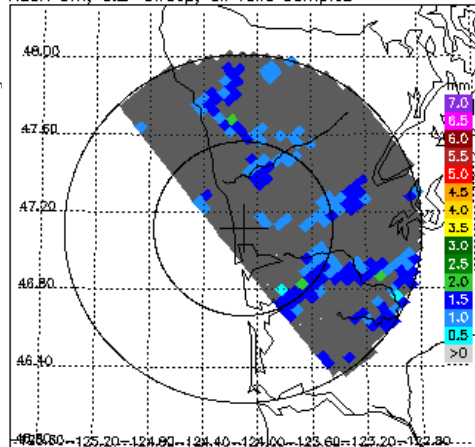
DPR/2ADPR NW, 0.2° sweep, all valid samples



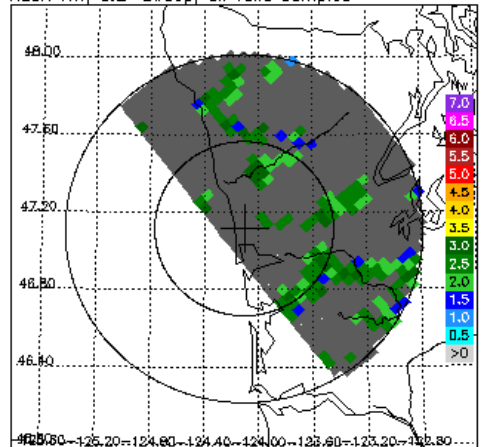
KLGX KD, 0.2° sweep, all valid samples



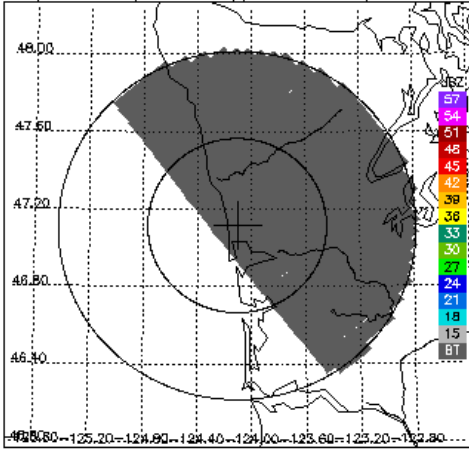
KLGX Dm, 0.2° sweep, all valid samples



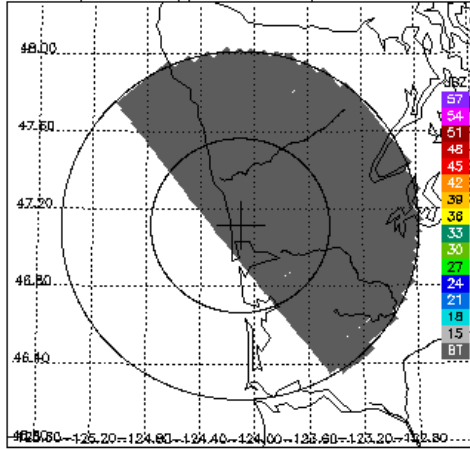
KLGX NW, 0.2° sweep, all valid samples



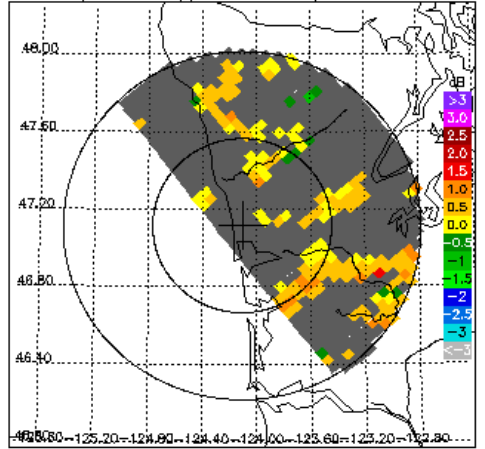
DPR/2ADPR CZ, 0.5° sweep, all valid samples



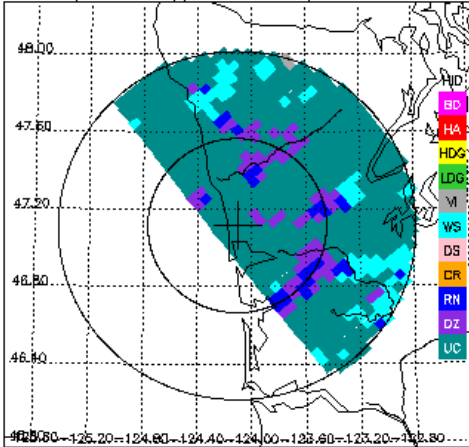
KLGX CZ, 0.5° sweep, all valid samples



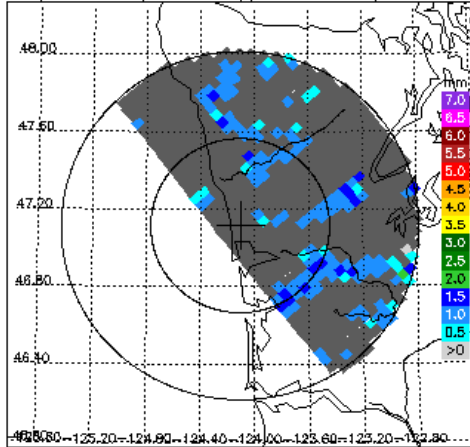
KLGX DR, 0.5° sweep, all valid samples



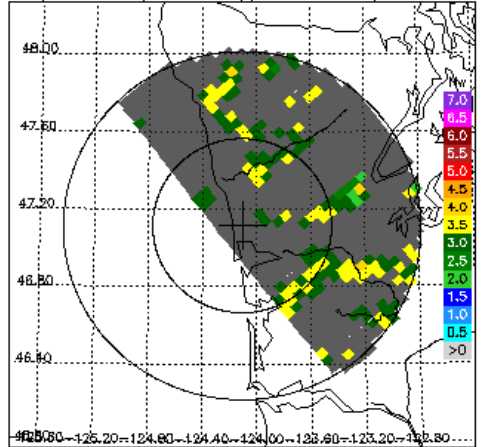
KLGX FH, 0.5° sweep, all valid samples



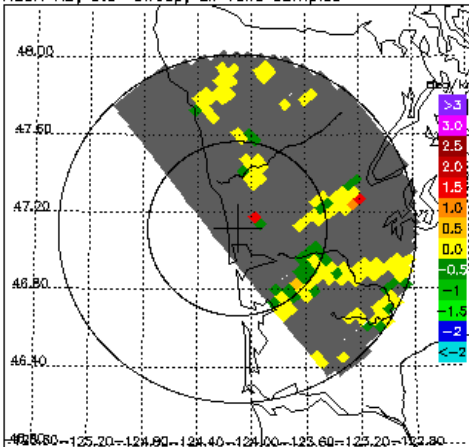
DPR/2ADPR Dm, 0.5° sweep, all valid samples



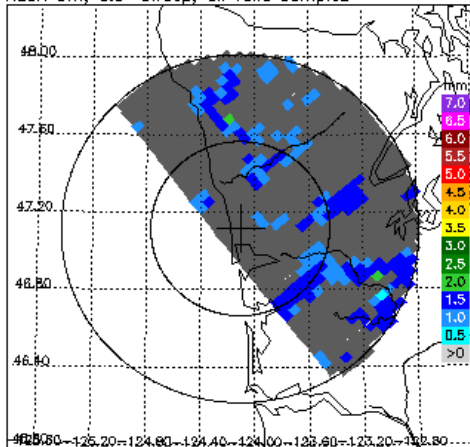
DPR/2ADPR NW, 0.5° sweep, all valid samples



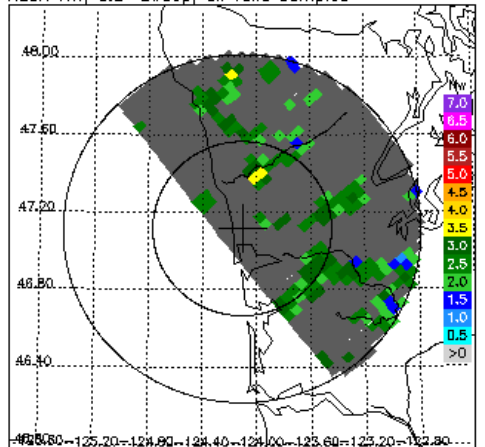
KLGX KD, 0.5° sweep, all valid samples



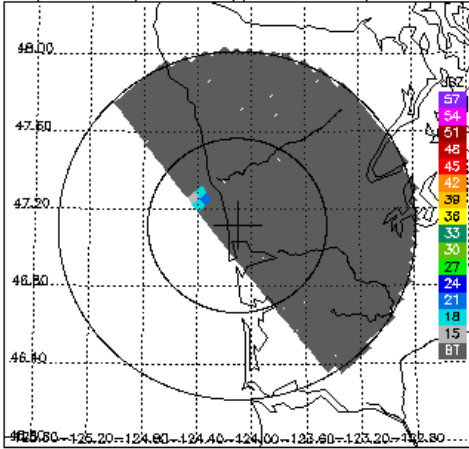
KLGX Dm, 0.5° sweep, all valid samples



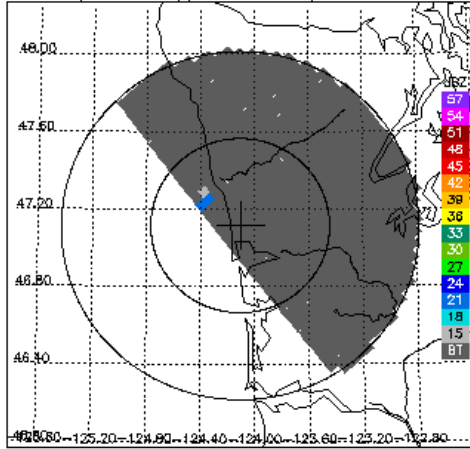
KLGX NW, 0.5° sweep, all valid samples



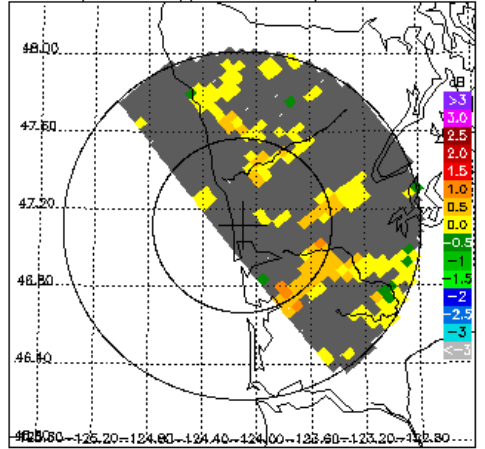
DPR/2ADPR CZ, 1.5° sweep, all valid samples



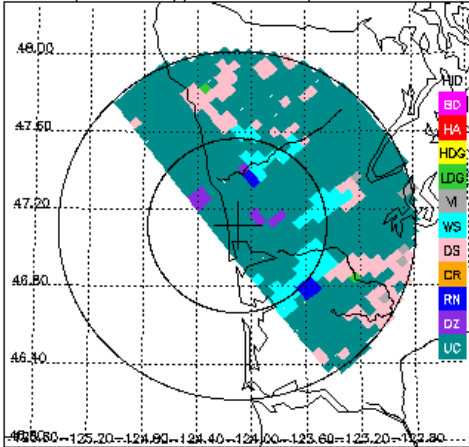
KLGX CZ, 1.5° sweep, all valid samples



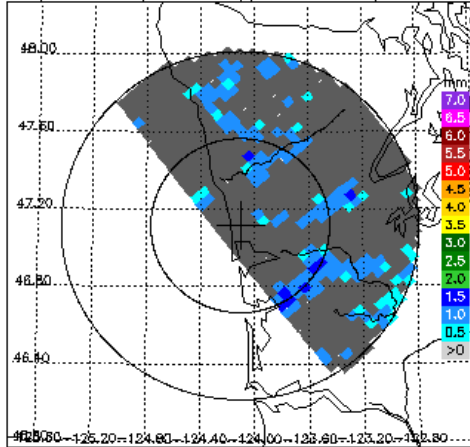
KLGX DR, 1.5° sweep, all valid samples



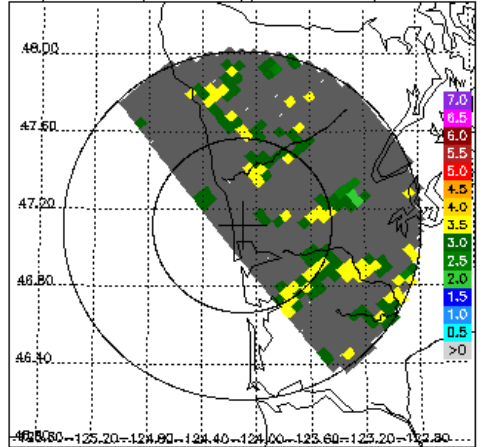
KLGX FH, 1.5° sweep, all valid samples



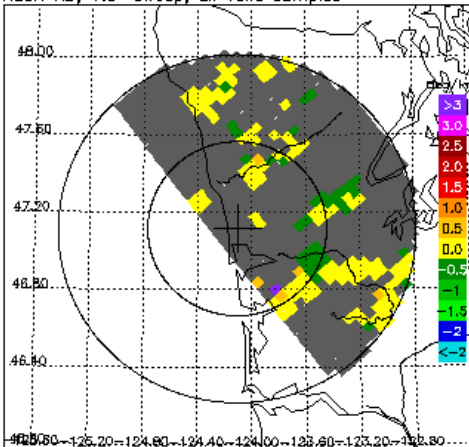
DPR/2ADPR Dm, 1.5° sweep, all valid samples



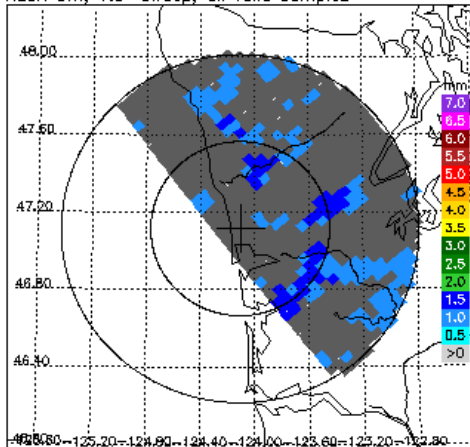
DPR/2ADPR NW, 1.5° sweep, all valid samples



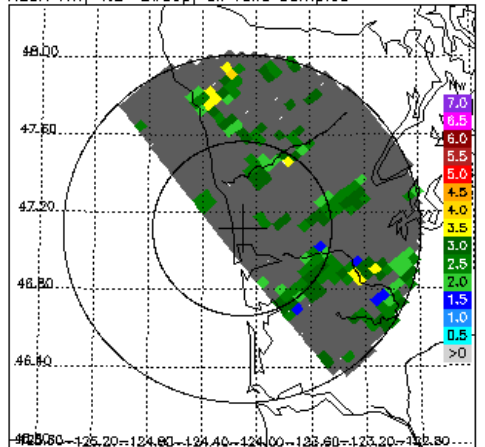
KLGX KD, 1.5° sweep, all valid samples



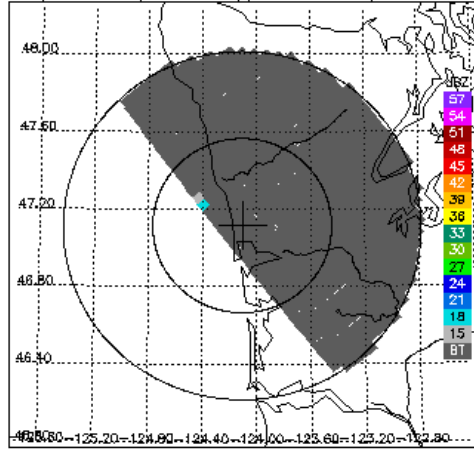
KLGX Dm, 1.5° sweep, all valid samples



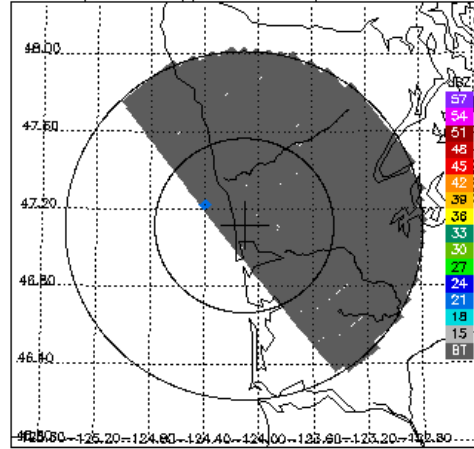
KLGX NW, 1.5° sweep, all valid samples



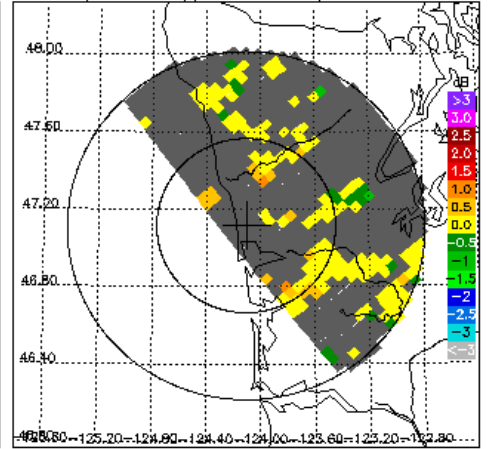
DPR/2ADPR CZ, 2.4° sweep, all valid samples



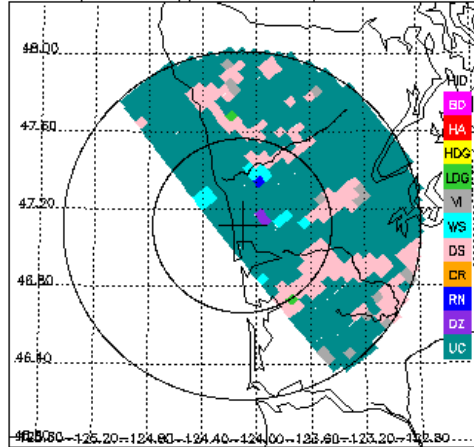
KLGX CZ, 2.4° sweep, all valid samples



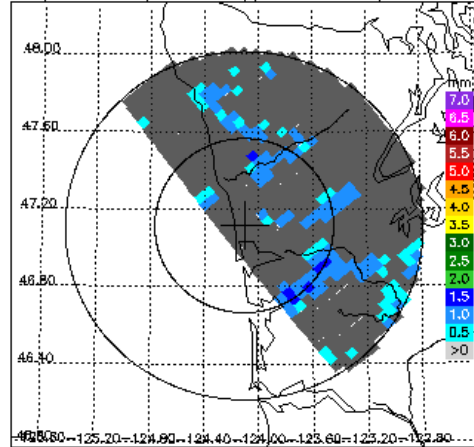
KLGX DR, 2.4° sweep, all valid samples



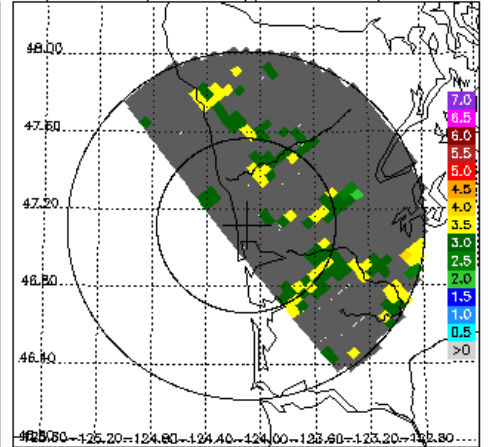
KLGX FH, 2.4° sweep, all valid samples



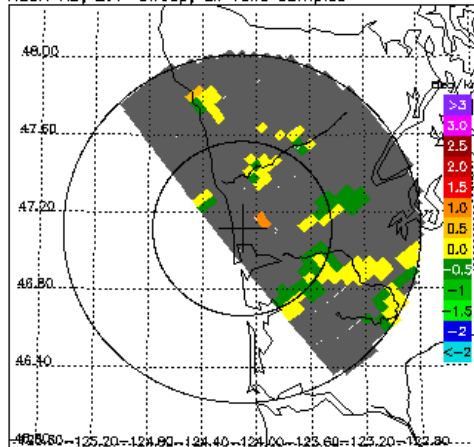
DPR/2ADPR Dm, 2.4° sweep, all valid samples



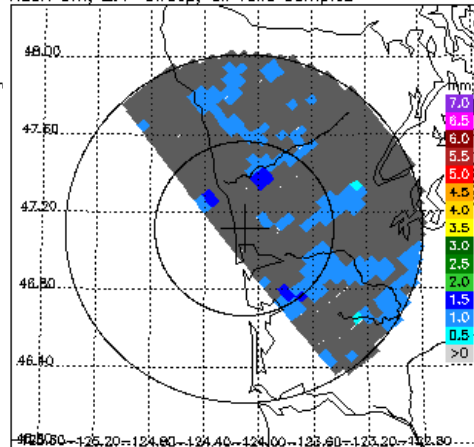
DPR/2ADPR NW, 2.4° sweep, all valid samples



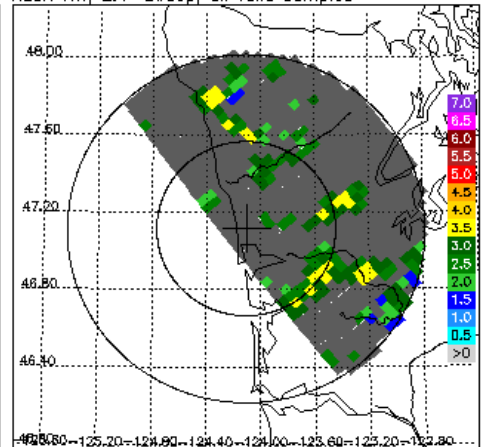
KLGX KD, 2.4° sweep, all valid samples



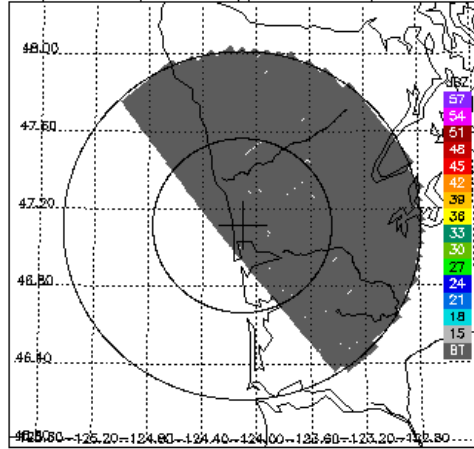
KLGX Dm, 2.4° sweep, all valid samples



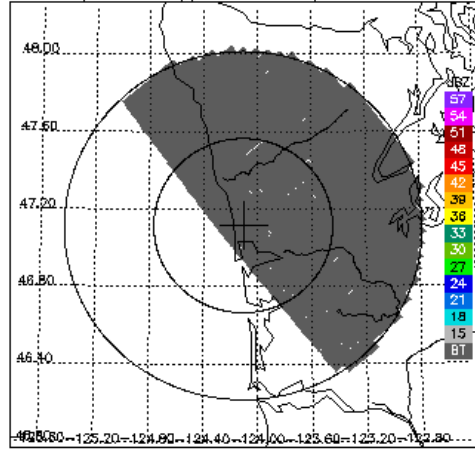
KLGX NW, 2.4° sweep, all valid samples



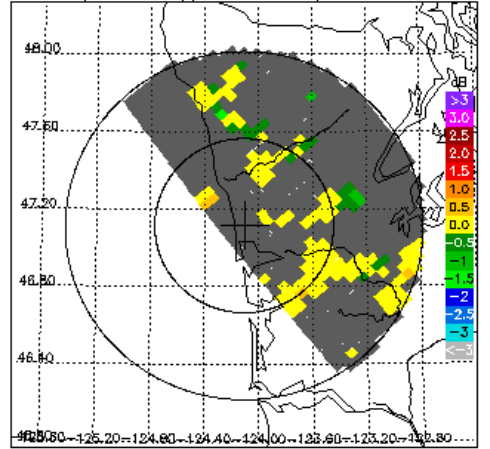
DPR/2ADPR CZ, 3.4° sweep, all valid samples



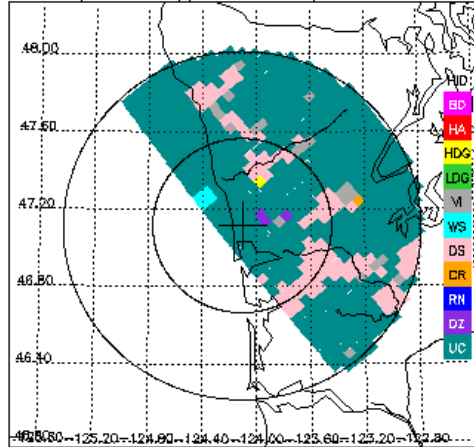
KLGX CZ, 3.4° sweep, all valid samples



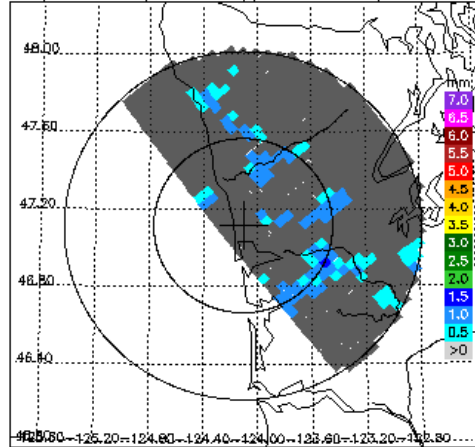
KLGX DR, 3.4° sweep, all valid samples



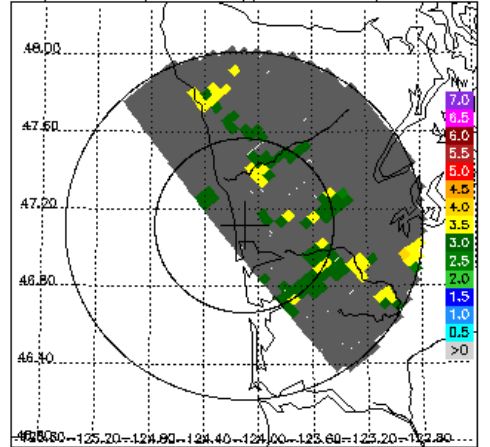
KLGX FH, 3.4° sweep, all valid samples



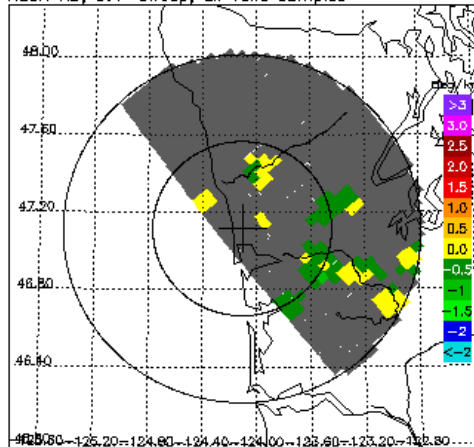
DPR/2ADPR Dm, 3.4° sweep, all valid samples



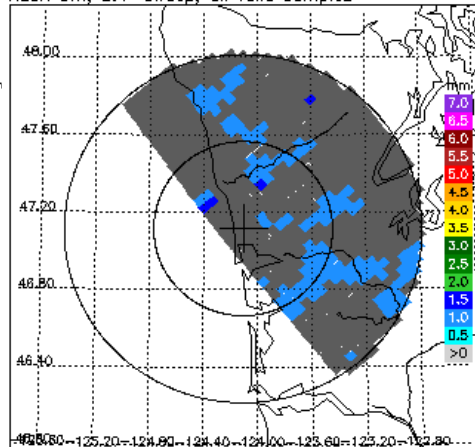
DPR/2ADPR NW, 3.4° sweep, all valid samples



KLGX KD, 3.4° sweep, all valid samples



KLGX Dm, 3.4° sweep, all valid samples



KLGX NW, 3.4° sweep, all valid samples

