

KLGX Ku-adjusted DSD vs. DPR 2ADPR/NS/V04A -- All non-missing pairs  
 Orbit: 9773 -- GR Start Time: 2015-11-17 20:01:43

DPR 2ADPR-GR Reflectivity difference statistics (dBZ) - GR Site: KLGX  
 Orbit: 9773 Version: V04A Swath Type: NS  
 DPR time = 2015-11-17 20:01:47 GR start time = 2015-11-17 20:01:43  
 Required percent of above-threshold DPR and GR bins in matched volumes >= 0%  
 Filtering by GR\_blockage Land/Ocean Category criteria.  
 GR reflectivity has S-to-Ku frequency adjustments applied.

Mean Reflectivity Statistics grouped by fixed height levels (km):

Vert. Layer	Any Rain Type		Stratiform		Convective		Dataset Statistics		
	DPR-GR	NumPts	DPR-GR	NumPts	DPR-GR	NumPts	AvgDist	DPRMaxZ	GRMaxZ
1.0	-0.093	646	0.178	570	-2.027	68	61.439	40.874	43.045
2.0	0.116	384	0.296	360	-1.847	22	45.712	33.397	36.256 @ BB
3.0	-0.239	396	-0.343	377	1.497	9	52.839	31.832	34.662 @ BB
4.0	0.217	312	0.181	299	4.801	3	53.089	25.682	26.205
5.0	1.793	177	1.682	164	5.214	2	58.402	22.316	23.375
6.0	4.098	17	3.944	16	-99.999	0	72.938	18.911	17.584
7.0	4.172	3	4.172	3	-99.999	0	63.476	17.761	16.299

No above-threshold points at height 8.000

Mean Reflectivity Statistics grouped by proximity to Bright Band:

Surface type	Any Rain Type		Stratiform		Convective		Dataset Statistics		
	DPR-GR	NumPts	DPR-GR	NumPts	DPR-GR	NumPts	AvgDist	DPRMaxZ	GRMaxZ
Below	-0.264	799	-0.026	729	-2.093	64	53.359	40.874	43.045

GR Dm field is being directly compared to DPR Dm.

Mean Drop Diameter (Dm, in mm) Statistics grouped by fixed height levels (km):

Vert. Layer	Any Rain Type		Stratiform		Convective		Dataset Statistics		
	DPR-GR	NumPts	DPR-GR	NumPts	DPR-GR	NumPts	AvgDist	DPRMaxDm	GRMaxDm
1.0	-0.146	502	-0.165	434	-0.027	64	61.051	1.778	1.647

No above-threshold points at height 2.000

No above-threshold points at height 3.000

No above-threshold points at height 4.000

No above-threshold points at height 5.000

No above-threshold points at height 6.000

No above-threshold points at height 7.000

No above-threshold points at height 8.000

Mean Drop Diameter (Dm, in mm) Statistics grouped by proximity to Bright Band:

Surface type	Any Rain Type		Stratiform		Convective		Dataset Statistics		
	DPR-GR	NumPts	DPR-GR	NumPts	DPR-GR	NumPts	AvgDist	DPRMaxDm	GRMaxDm
Below	-0.195	818	-0.214	748	-0.027	64	53.632	1.778	3.090

GR NW field is being directly compared to DPR Nw.

Mean Normalized Intercept Parameter ( log10(Nw) ) Statistics grouped by fixed height levels (km):

Vert. Layer	Any Rain Type		Stratiform		Convective		Dataset Statistics		
	DPR-GR	NumPts	DPR-GR	NumPts	DPR-GR	NumPts	AvgDist	DPRMaxNw	GRMaxNw
1.0	0.456	502	0.462	434	0.363	64	61.051	5.473	4.660

No above-threshold points at height 2.000

No above-threshold points at height 3.000

No above-threshold points at height 4.000

No above-threshold points at height 5.000

No above-threshold points at height 6.000

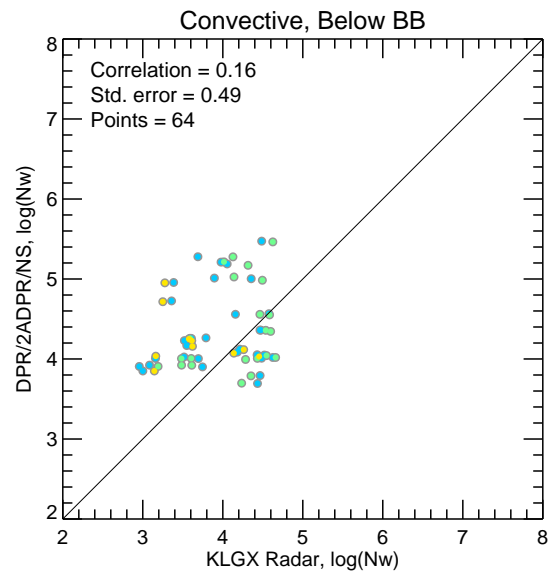
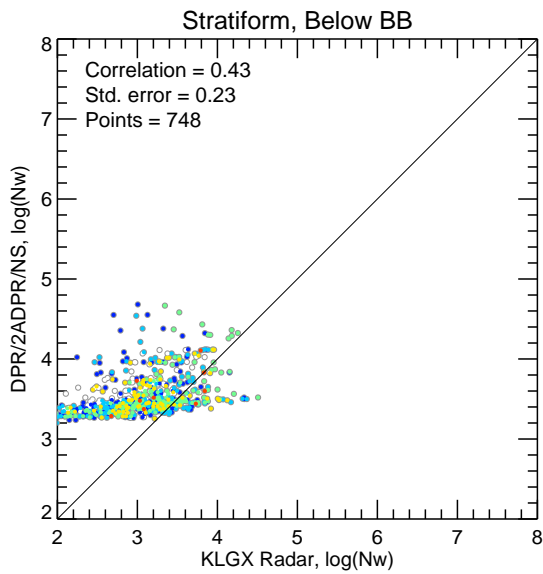
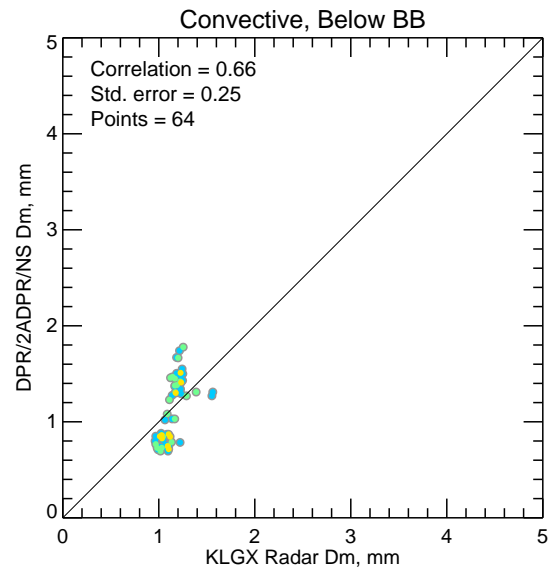
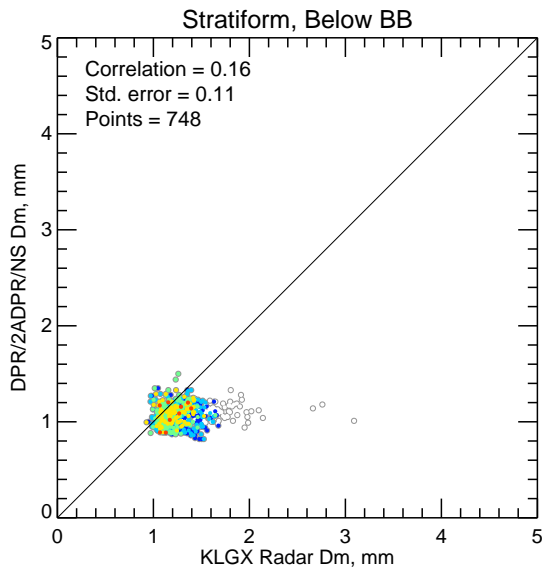
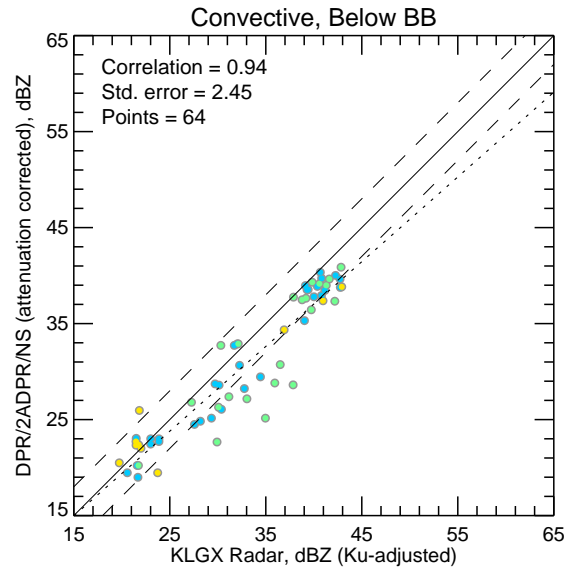
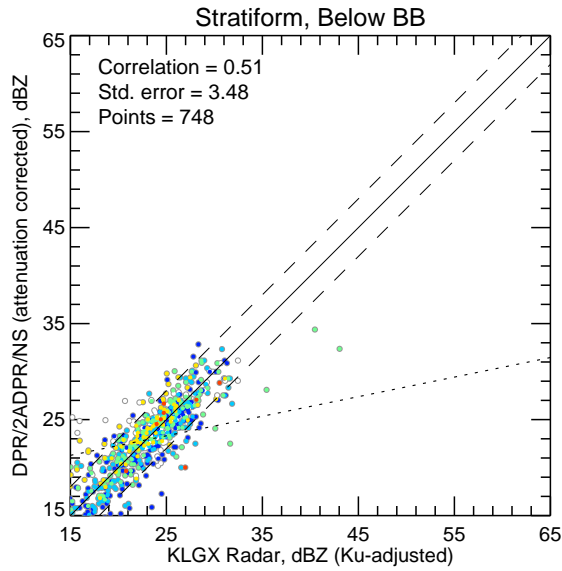
No above-threshold points at height 7.000

No above-threshold points at height 8.000

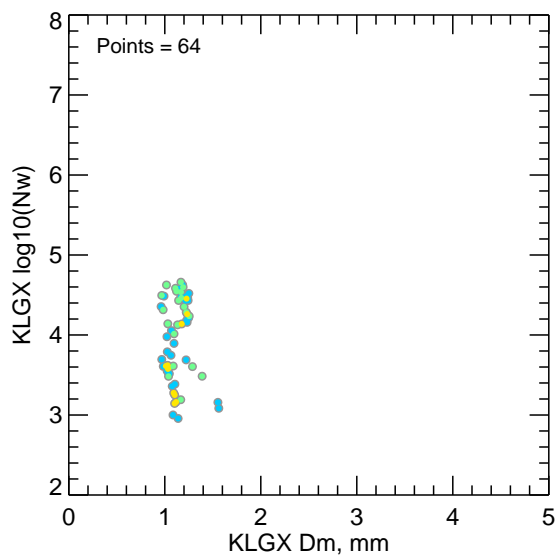
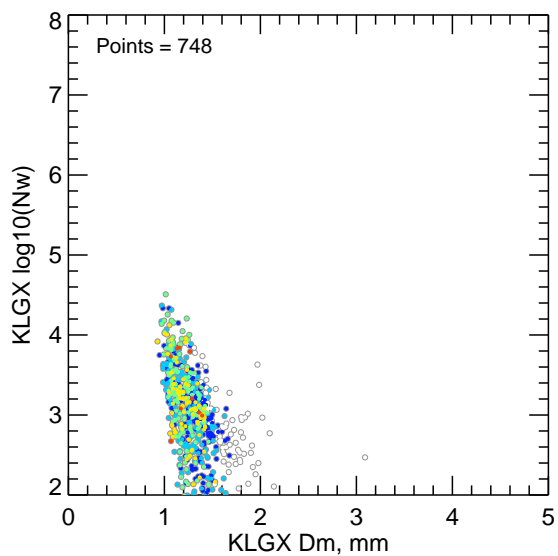
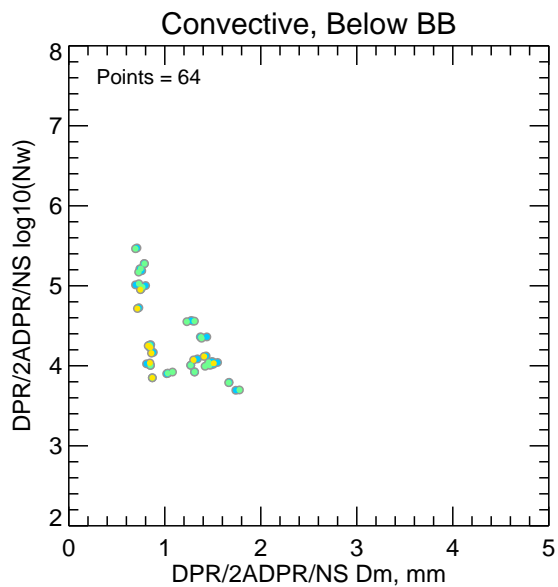
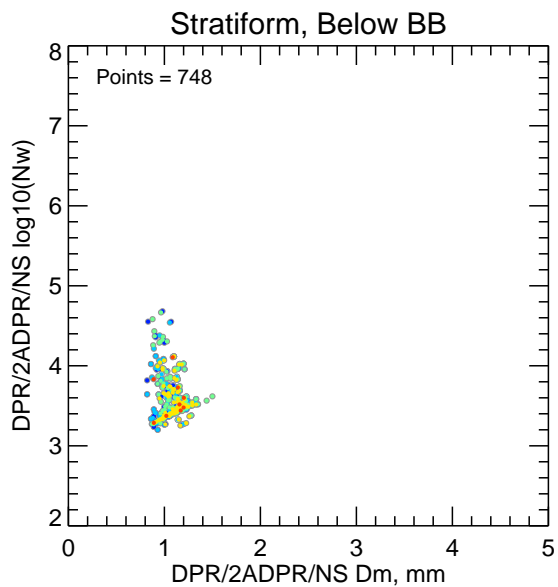
Mean Normalized Intercept Parameter ( log10(Nw) ) Statistics grouped by proximity to Bright Band:

Surface type	Any Rain Type		Stratiform		Convective		Dataset Statistics		
	DPR-GR	NumPts	DPR-GR	NumPts	DPR-GR	NumPts	AvgDist	DPRMaxNw	GRMaxNw
Below	0.505	818	0.513	748	0.363	64	53.632	5.473	4.660

# KLGX Ku-adjusted DSD vs. DPR 2ADPR/NS/V04A -- All non-missing pairs

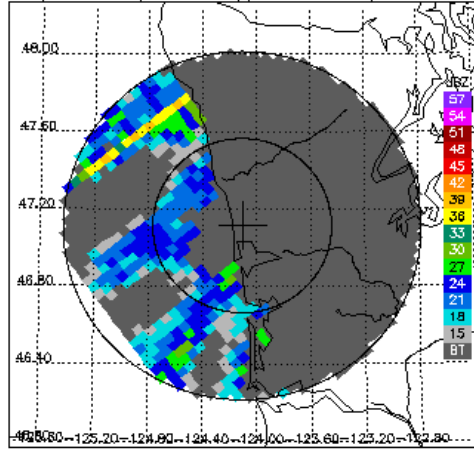


Dm vs.  $\log_{10}(N_w)$  for DPR 2ADPR/NS/V04A and KLGX -- All non-missing pairs

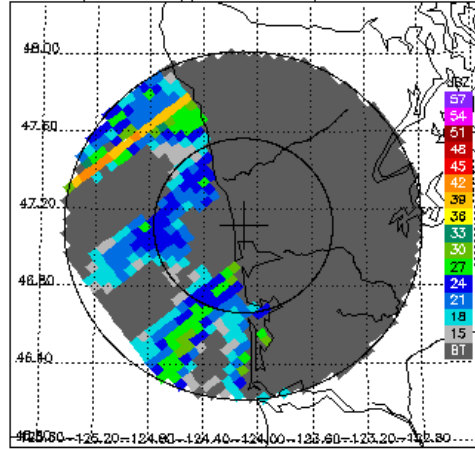


- 1.25 km
- 1.00 km
- 0.75 km
- 0.50 km
- 0.25 km
- 0.00 km

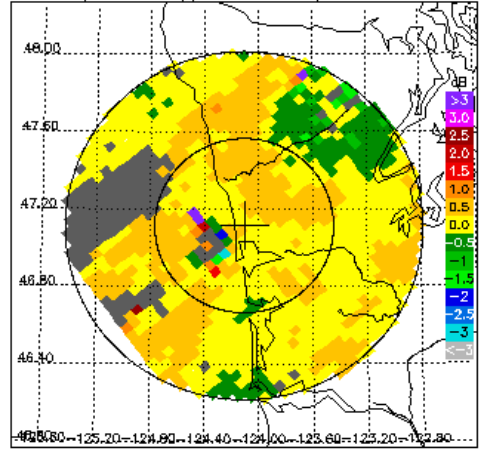
DPR/2ADPR CZ, 0.2° sweep, all valid samples



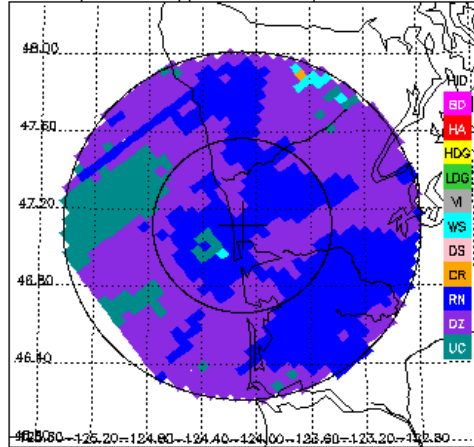
KLGX CZ, 0.2° sweep, all valid samples



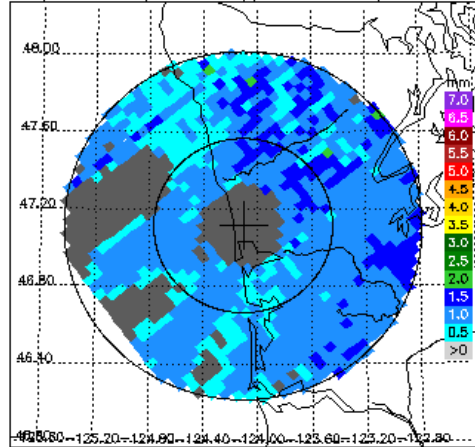
KLGX DR, 0.2° sweep, all valid samples



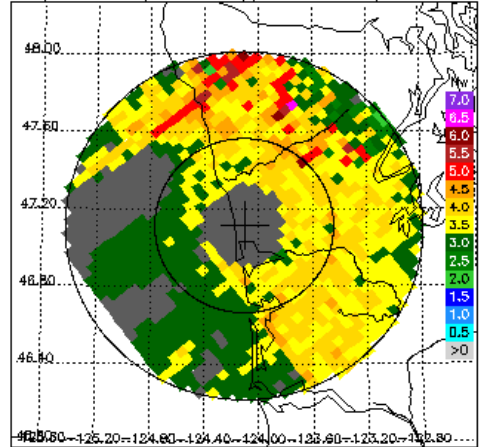
KLGX FH, 0.2° sweep, all valid samples



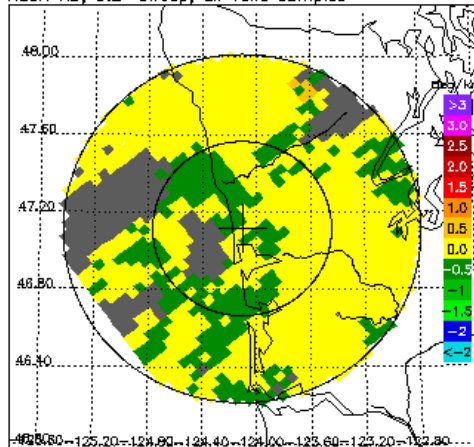
DPR/2ADPR Dm, 0.2° sweep, all valid samples



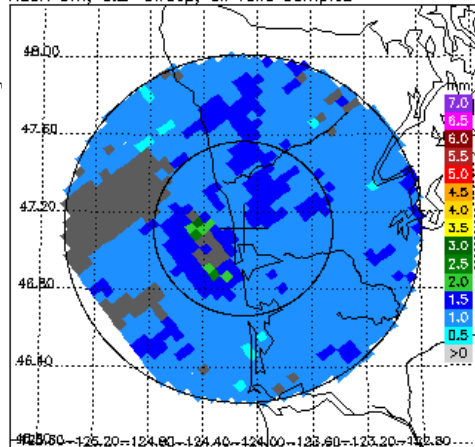
DPR/2ADPR NW, 0.2° sweep, all valid samples



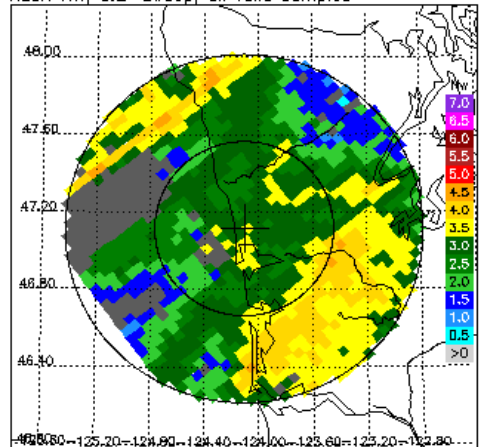
KLGX KD, 0.2° sweep, all valid samples



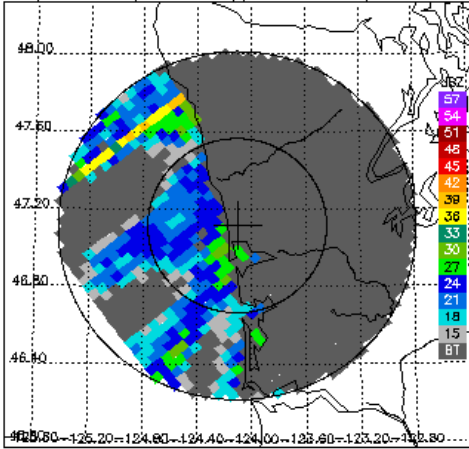
KLGX Dm, 0.2° sweep, all valid samples



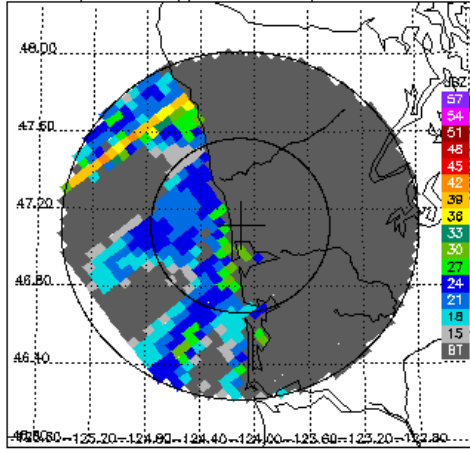
KLGX NW, 0.2° sweep, all valid samples



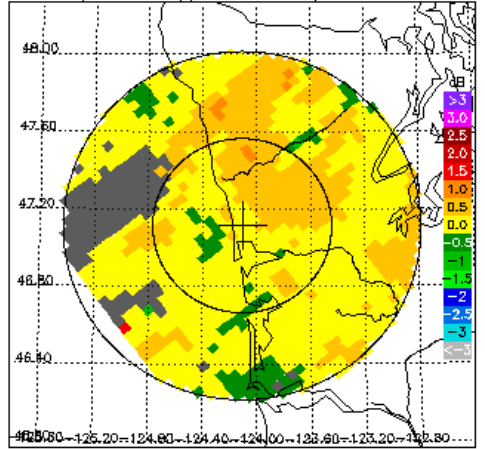
DPR/2ADPR CZ, 0.5° sweep, all valid samples



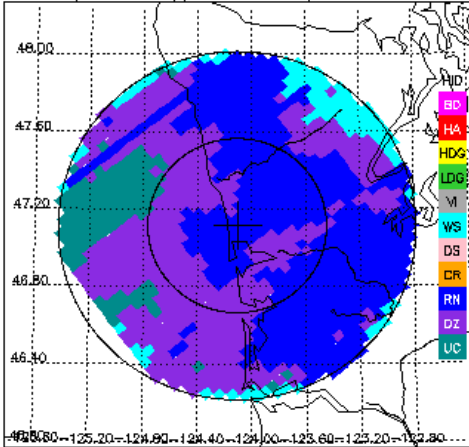
KLGX CZ, 0.5° sweep, all valid samples



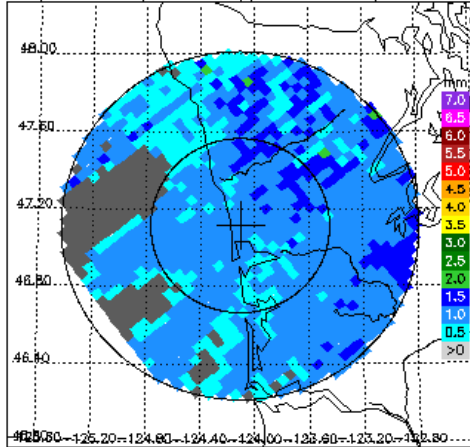
KLGX DR, 0.5° sweep, all valid samples



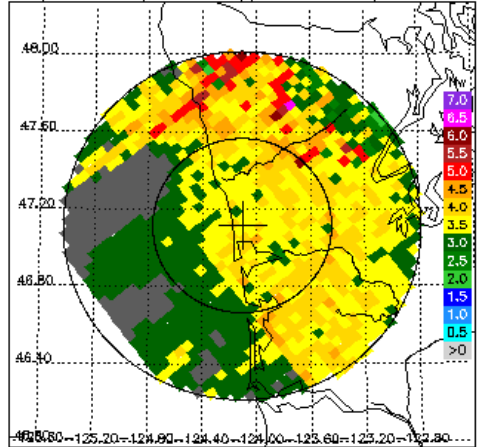
KLGX FH, 0.5° sweep, all valid samples



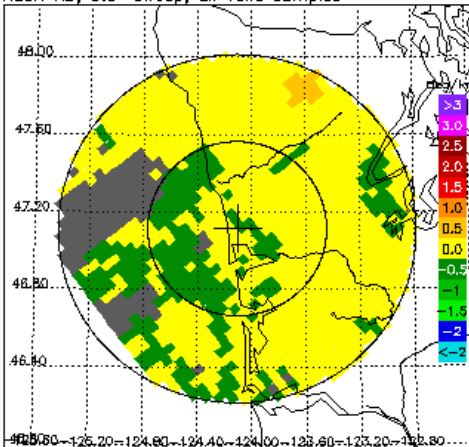
DPR/2ADPR Dm, 0.5° sweep, all valid samples



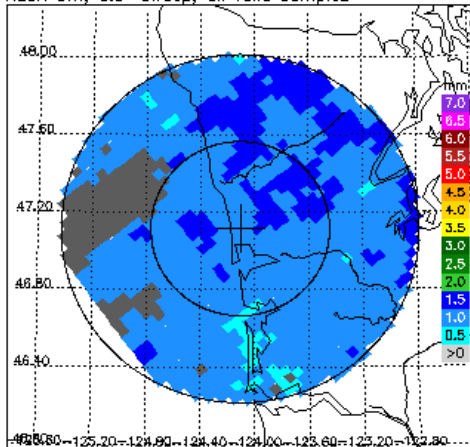
DPR/2ADPR NW, 0.5° sweep, all valid samples



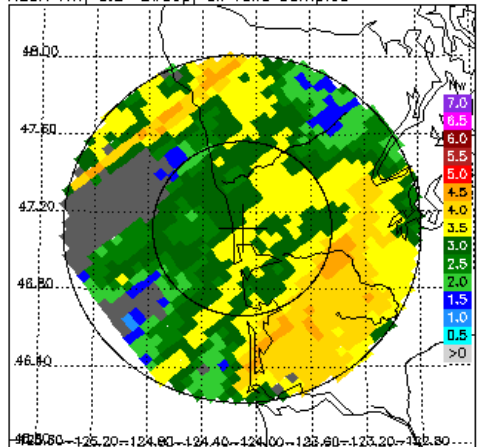
KLGX KD, 0.5° sweep, all valid samples



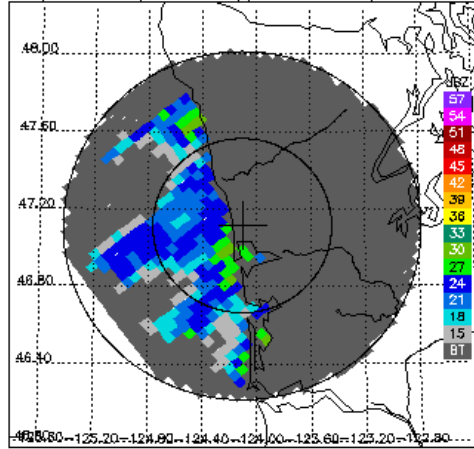
KLGX Dm, 0.5° sweep, all valid samples



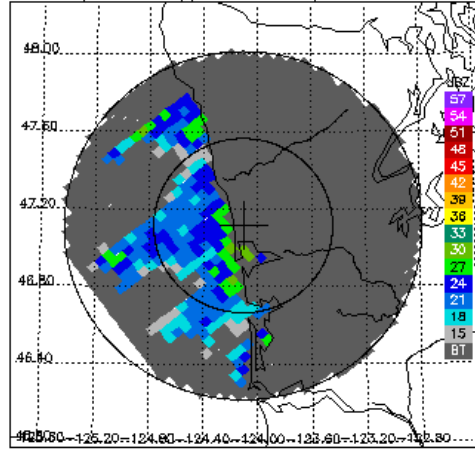
KLGX NW, 0.5° sweep, all valid samples



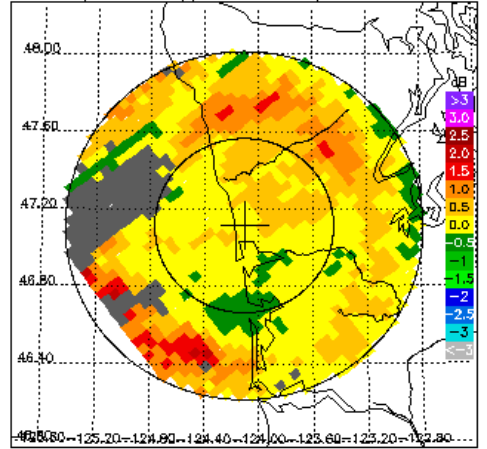
DPR/2ADPR CZ, 1.5° sweep, all valid samples



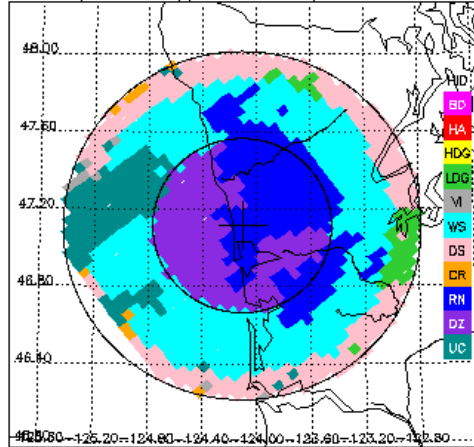
KLGX CZ, 1.5° sweep, all valid samples



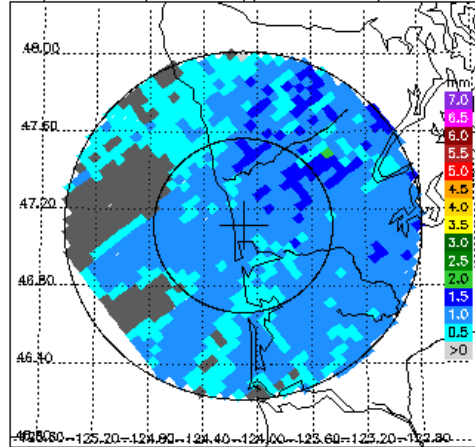
KLGX DR, 1.5° sweep, all valid samples



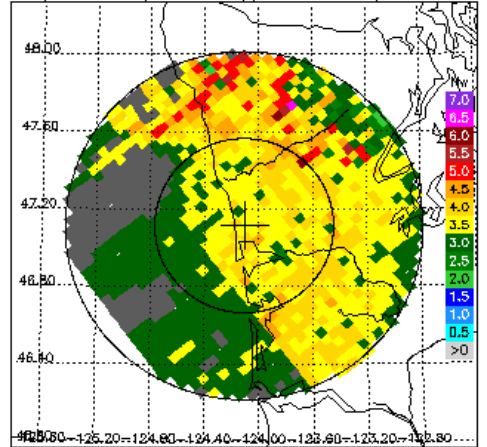
KLGX FH, 1.5° sweep, all valid samples



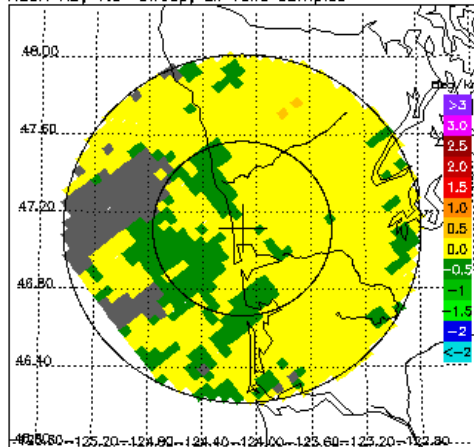
DPR/2ADPR Dm, 1.5° sweep, all valid samples



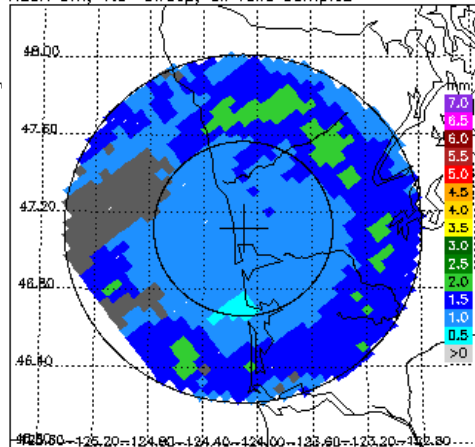
DPR/2ADPR NW, 1.5° sweep, all valid samples



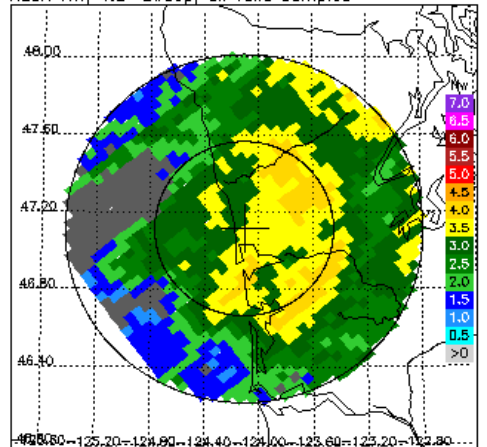
KLGX KD, 1.5° sweep, all valid samples



KLGX Dm, 1.5° sweep, all valid samples

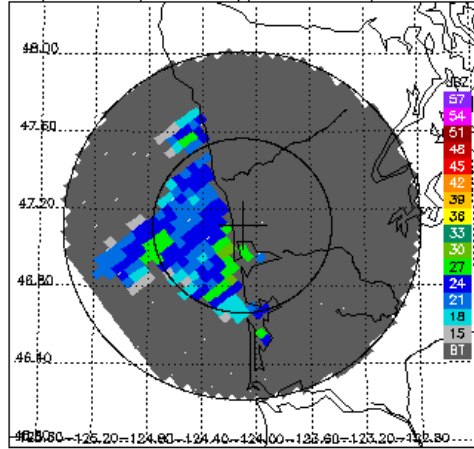


KLGX NW, 1.5° sweep, all valid samples

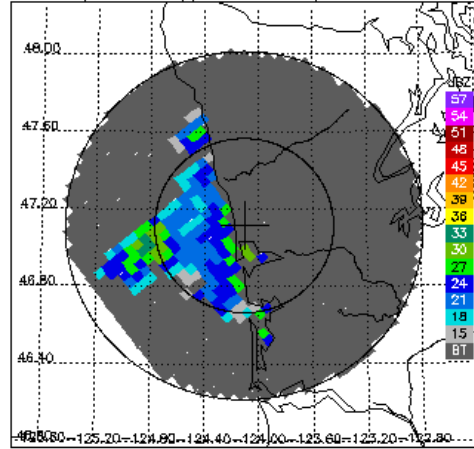




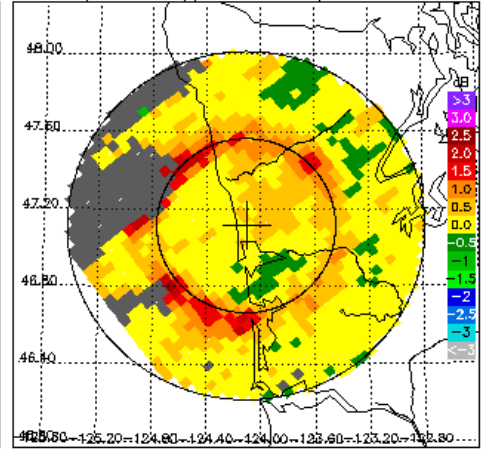
DPR/2ADPR CZ, 2.4° sweep, all valid samples



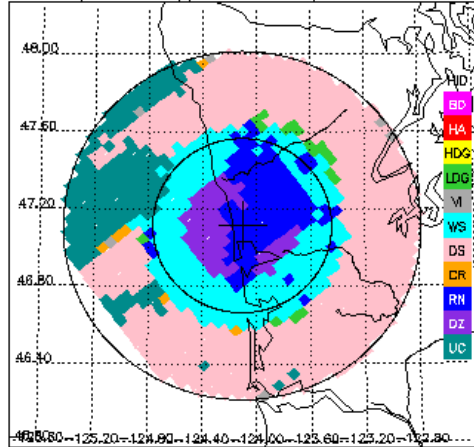
KLGX CZ, 2.4° sweep, all valid samples



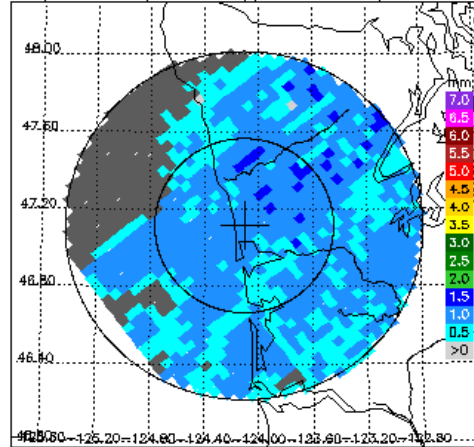
KLGX DR, 2.4° sweep, all valid samples



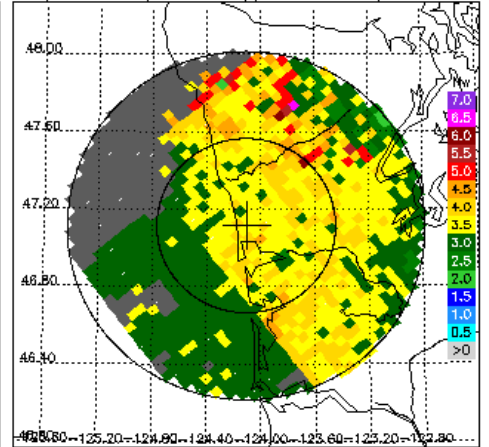
KLGX FH, 2.4° sweep, all valid samples



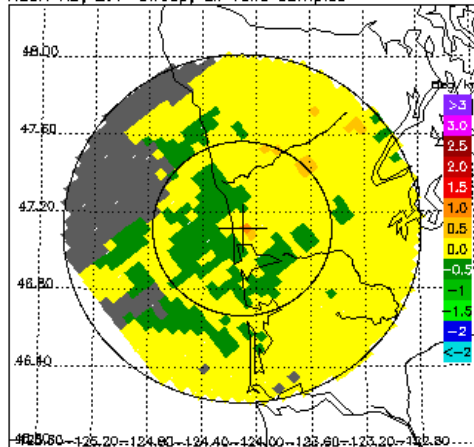
DPR/2ADPR Dm, 2.4° sweep, all valid samples



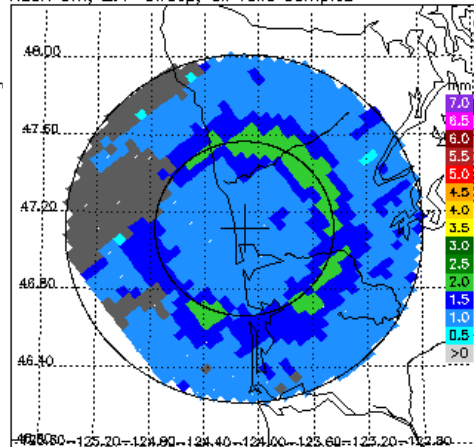
DPR/2ADPR NW, 2.4° sweep, all valid samples



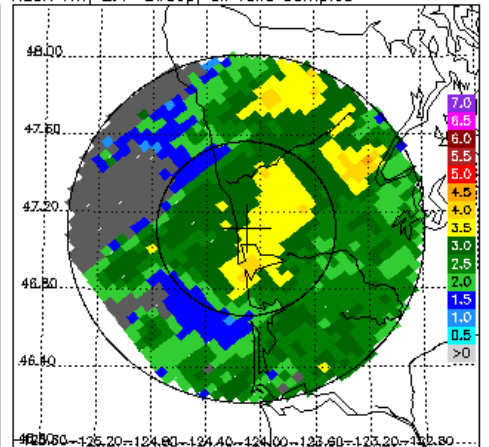
KLGX KD, 2.4° sweep, all valid samples



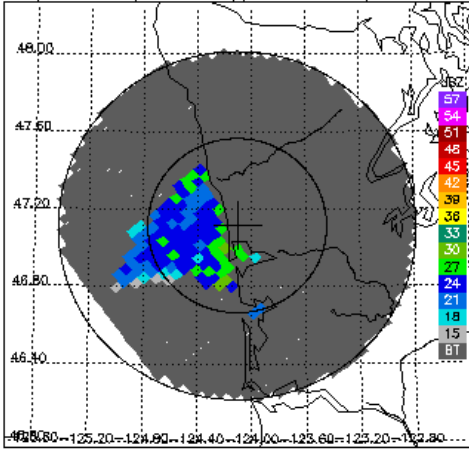
KLGX Dm, 2.4° sweep, all valid samples



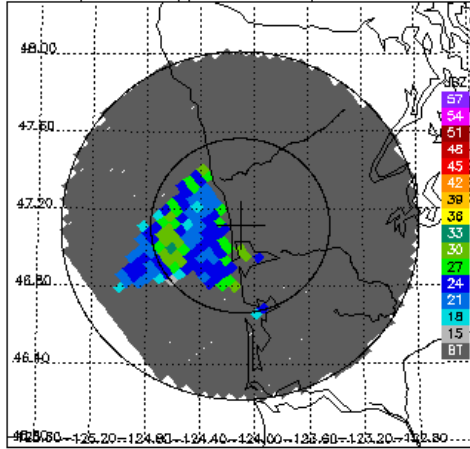
KLGX NW, 2.4° sweep, all valid samples



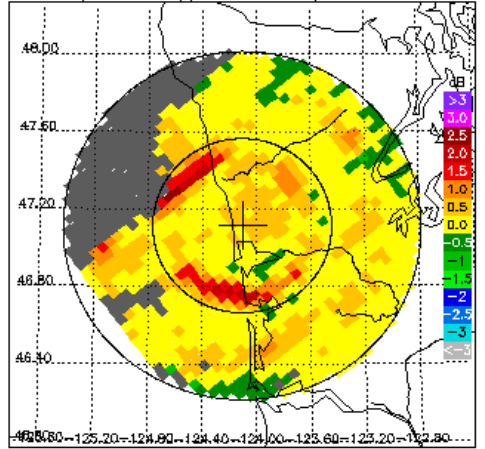
DPR/2ADPR CZ, 3.4° sweep, all valid samples



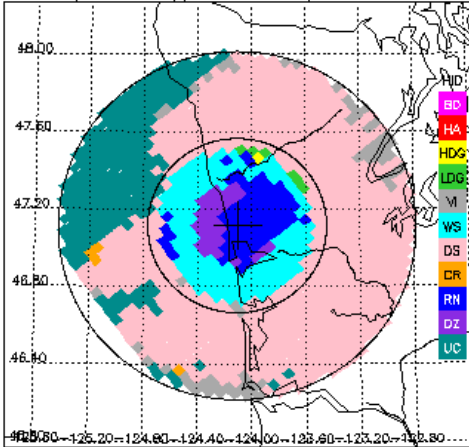
KLGX CZ, 3.4° sweep, all valid samples



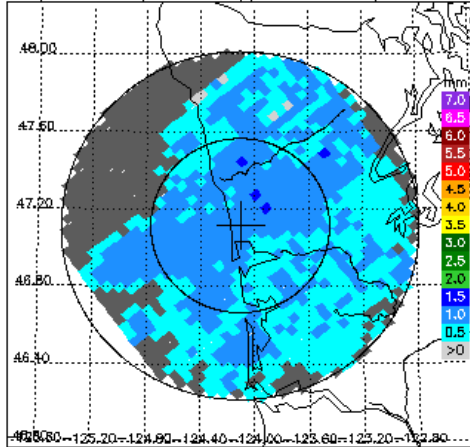
KLGX DR, 3.4° sweep, all valid samples



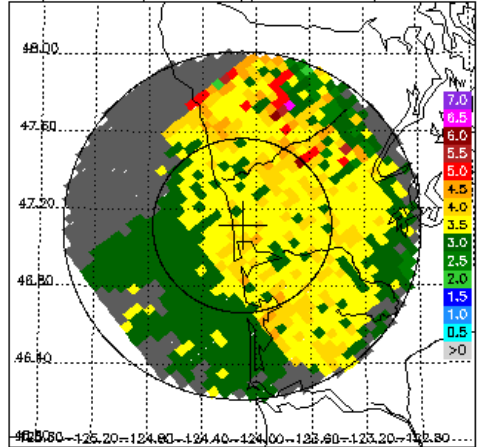
KLGX FH, 3.4° sweep, all valid samples



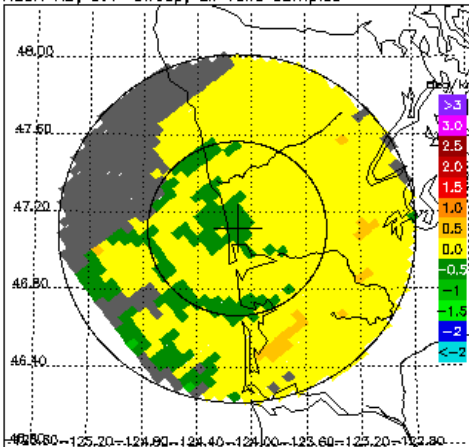
DPR/2ADPR Dm, 3.4° sweep, all valid samples



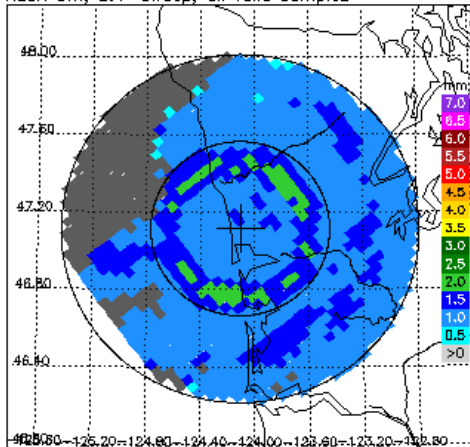
DPR/2ADPR NW, 3.4° sweep, all valid samples



KLGX KD, 3.4° sweep, all valid samples



KLGX Dm, 3.4° sweep, all valid samples



KLGX NW, 3.4° sweep, all valid samples

