

KLGX Ku-adjusted DSD vs. DPR 2ADPR/NS/V04A -- All non-missing pairs

Orbit: 10091 -- GR Start Time: 2015-12-08 06:10:08

DPR 2ADPR-GR Reflectivity difference statistics (dBZ) - GR Site: KLGX
 Orbit: 10091 Version: V04A Swath Type: NS
 DPR time = 2015-12-08 06:10:59 GR start time = 2015-12-08 06:10:08
 Required percent of above-threshold DPR and GR bins in matched volumes >= 0%
 Filtering by GR_blockage Land/Ocean Category criteria.
 GR reflectivity has S-to-Ku frequency adjustments applied.

Mean Reflectivity Statistics grouped by fixed height levels (km):

Vert. Layer	Any Rain Type		Stratiform		Convective		Dataset Statistics		
	DPR-GR	NumPts	DPR-GR	NumPts	DPR-GR	NumPts	AvgDist	DPRMaxZ	GRMaxZ
1.0	2.586	248	2.619	234	-99.999	0	75.601	32.464	33.722
2.0	1.564	119	0.522	84	-99.999	0	60.668	25.944	26.864
3.0	0.252	394	-0.204	211	-99.999	0	57.759	25.093	26.377 @ BB
4.0	-0.789	444	-1.021	210	-99.999	0	57.408	23.845	26.057 @ BB
5.0	1.117	340	1.247	171	-99.999	0	59.647	23.260	23.553
6.0	4.189	41	4.784	21	-99.999	0	54.032	19.990	16.292

No above-threshold points at height 7.000

No above-threshold points at height 8.000

Mean Reflectivity Statistics grouped by proximity to Bright Band:

Surface type	Any Rain Type		Stratiform		Convective		Dataset Statistics		
	DPR-GR	NumPts	DPR-GR	NumPts	DPR-GR	NumPts	AvgDist	DPRMaxZ	GRMaxZ
Below	2.404	332	2.408	297	-99.999	0	68.945	32.464	33.722

GR Dm field is being directly compared to DPR Dm.

Mean Drop Diameter (Dm, in mm) Statistics grouped by fixed height levels (km):

Vert. Layer	Any Rain Type		Stratiform		Convective		Dataset Statistics		
	DPR-GR	NumPts	DPR-GR	NumPts	DPR-GR	NumPts	AvgDist	DPRMaxDm	GRMaxDm
1.0	-0.235	345	-0.209	290	-99.999	0	68.648	1.724	1.949
2.0	-0.427	133	-0.398	79	-99.999	0	47.461	1.158	1.766

No above-threshold points at height 3.000

No above-threshold points at height 4.000

No above-threshold points at height 5.000

No above-threshold points at height 6.000

No above-threshold points at height 7.000

No above-threshold points at height 8.000

Mean Drop Diameter (Dm, in mm) Statistics grouped by proximity to Bright Band:

Surface type	Any Rain Type		Stratiform		Convective		Dataset Statistics		
	DPR-GR	NumPts	DPR-GR	NumPts	DPR-GR	NumPts	AvgDist	DPRMaxDm	GRMaxDm
Below	-0.288	564	-0.244	419	-99.999	0	59.661	1.724	2.035

GR NW field is being directly compared to DPR Nw.

Mean Normalized Intercept Parameter (log10(Nw)) Statistics grouped by fixed height levels (km):

Vert. Layer	Any Rain Type		Stratiform		Convective		Dataset Statistics		
	DPR-GR	NumPts	DPR-GR	NumPts	DPR-GR	NumPts	AvgDist	DPRMaxNw	GRMaxNw
1.0	0.860	345	0.742	290	-99.999	0	68.648	3.983	3.944
2.0	1.454	133	1.178	79	-99.999	0	47.461	3.967	3.690

No above-threshold points at height 3.000

No above-threshold points at height 4.000

No above-threshold points at height 5.000

No above-threshold points at height 6.000

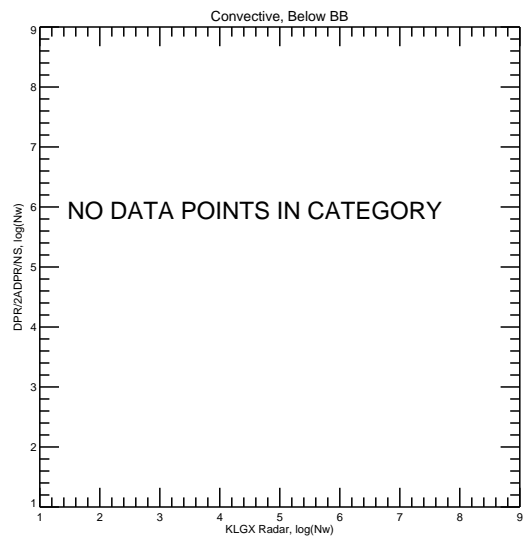
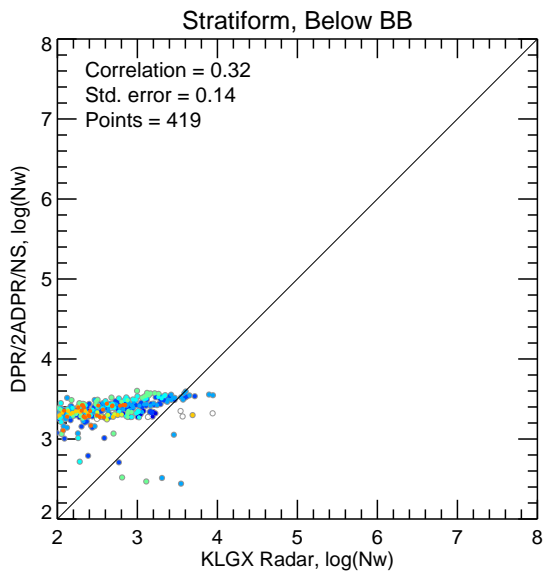
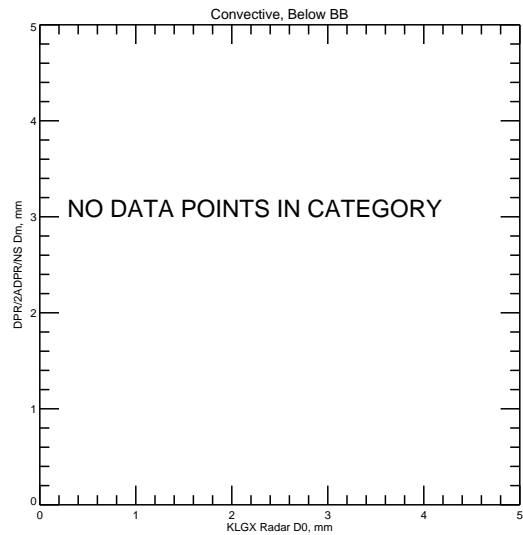
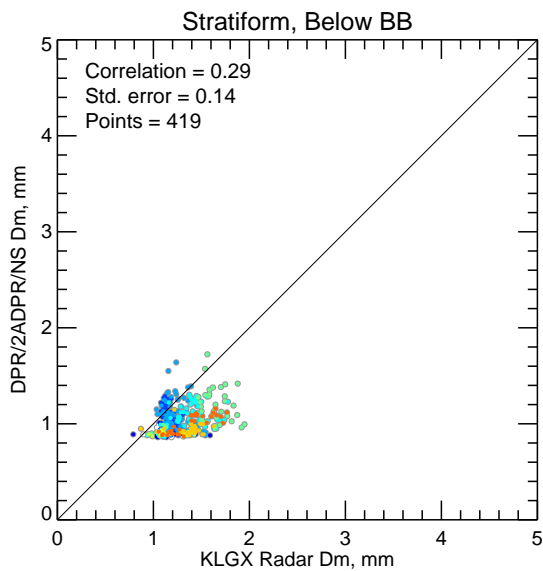
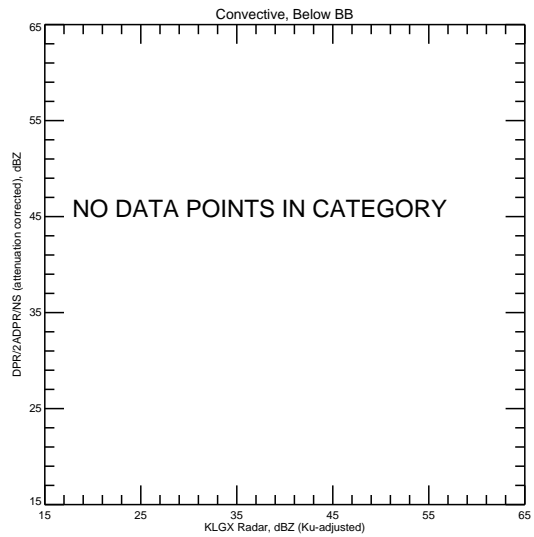
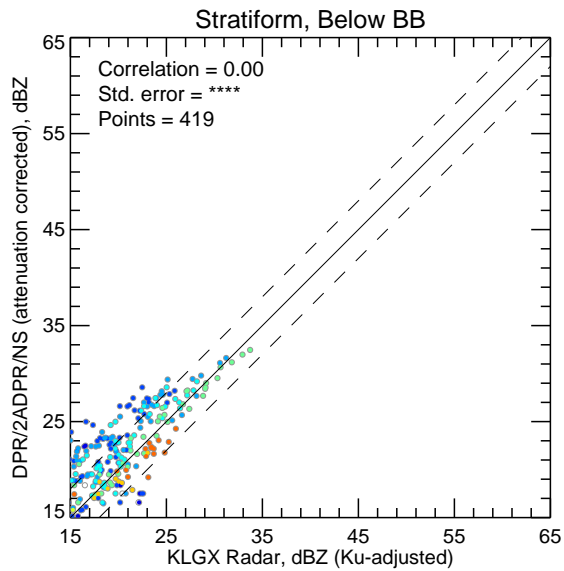
No above-threshold points at height 7.000

No above-threshold points at height 8.000

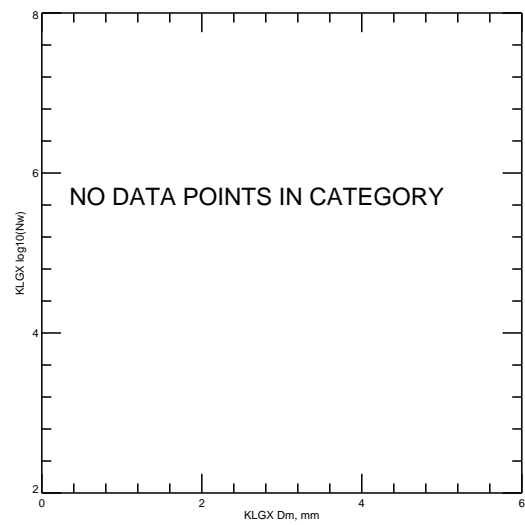
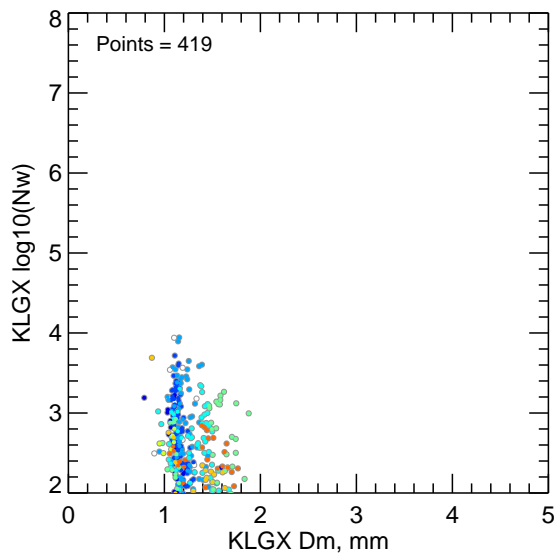
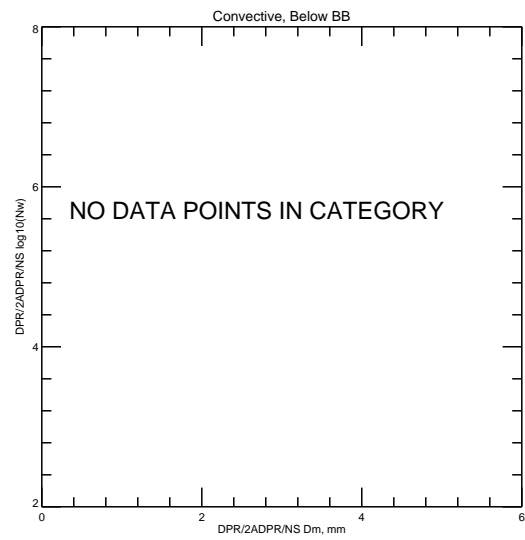
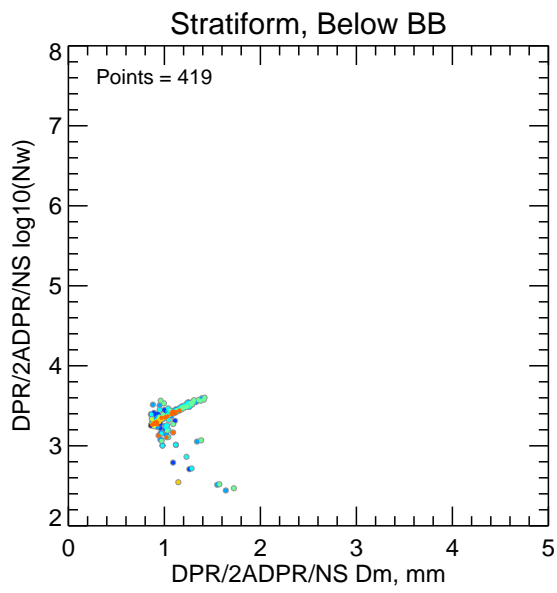
Mean Normalized Intercept Parameter (log10(Nw)) Statistics grouped by proximity to Bright Band:

Surface type	Any Rain Type		Stratiform		Convective		Dataset Statistics		
	DPR-GR	NumPts	DPR-GR	NumPts	DPR-GR	NumPts	AvgDist	DPRMaxNw	GRMaxNw
Below	1.032	564	0.839	419	-99.999	0	59.661	3.983	3.944

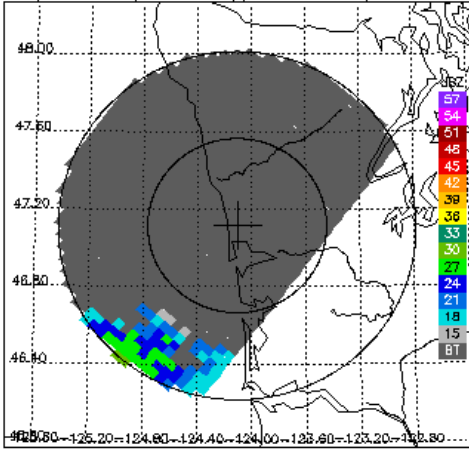
KLGX Ku-adjusted DSD vs. DPR 2ADPR/NS/V04A -- All non-missing pairs



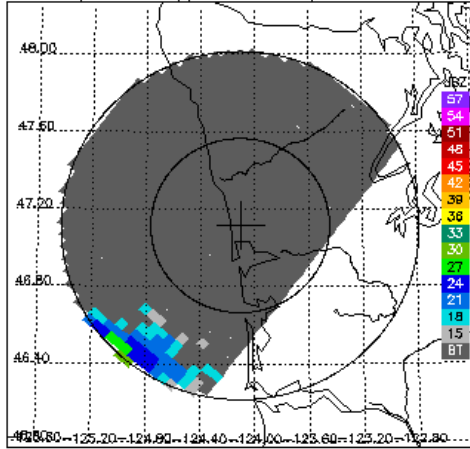
Dm vs. $\log_{10}(N_w)$ for DPR 2ADPR/NS/V04A and KLGX -- All non-missing pairs



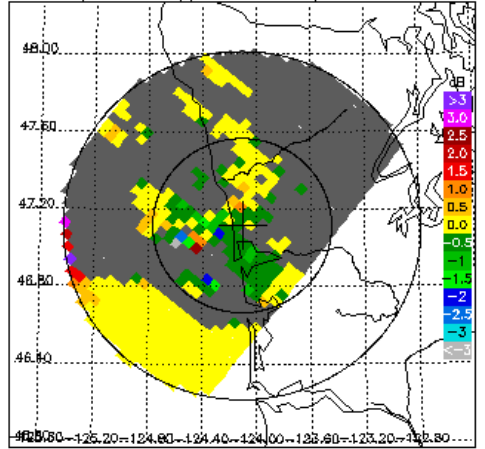
DPR/2ADPR CZ, 0.2° sweep, all valid samples



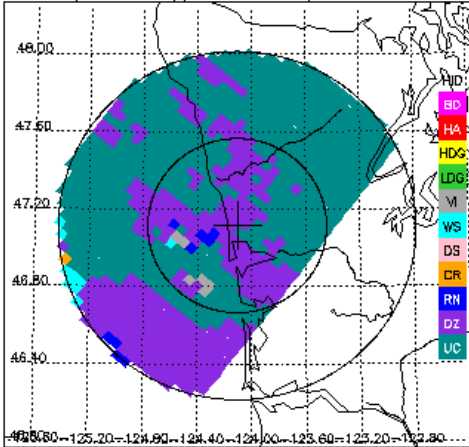
KLGX CZ, 0.2° sweep, all valid samples



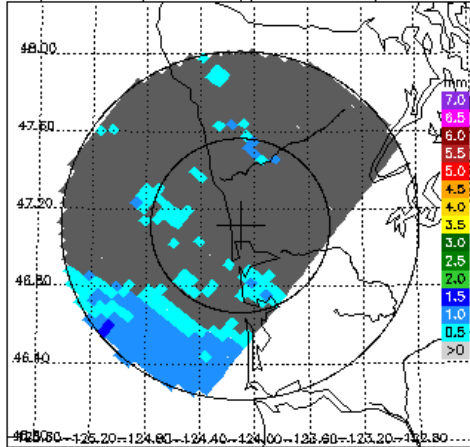
KLGX DR, 0.2° sweep, all valid samples



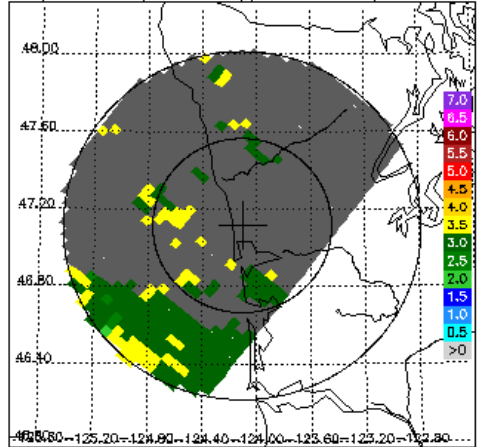
KLGX FH, 0.2° sweep, all valid samples



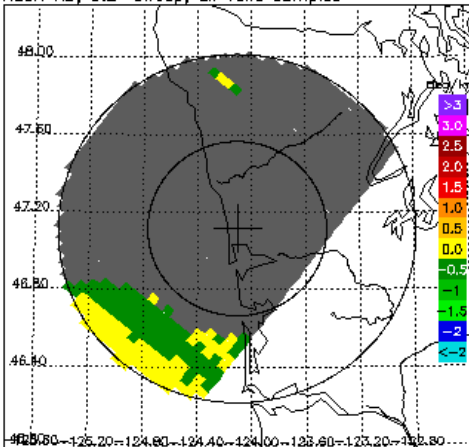
DPR/2ADPR Dm, 0.2° sweep, all valid samples



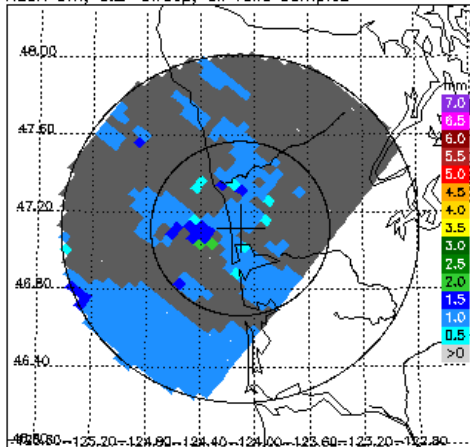
DPR/2ADPR NW, 0.2° sweep, all valid samples



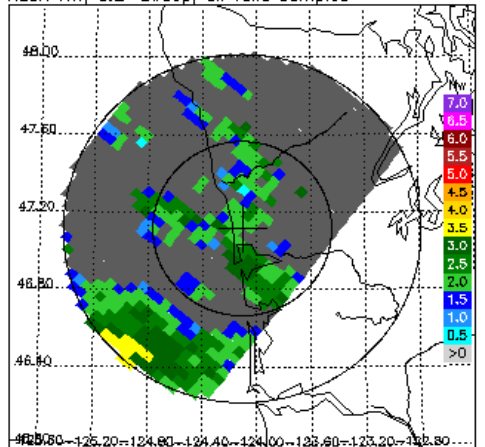
KLGX KD, 0.2° sweep, all valid samples



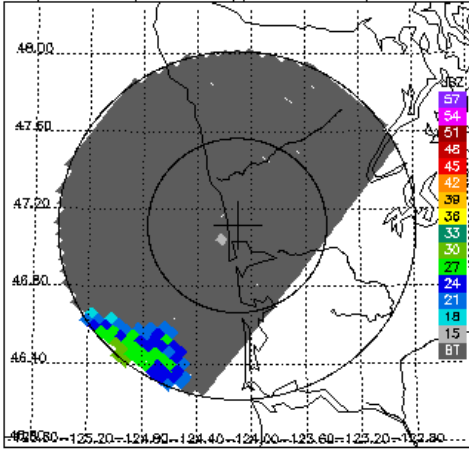
KLGX Dm, 0.2° sweep, all valid samples



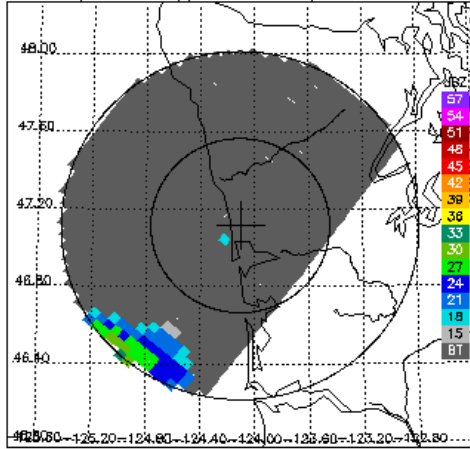
KLGX NW, 0.2° sweep, all valid samples



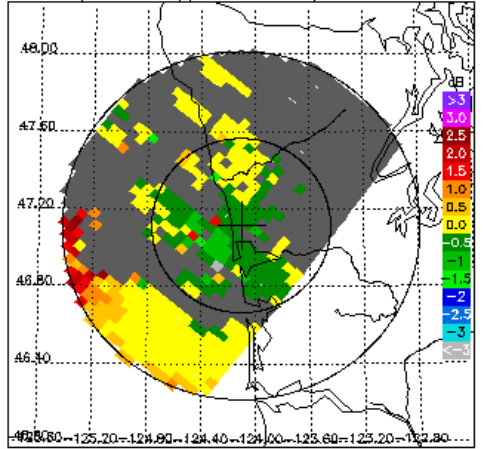
DPR/2ADPR CZ, 0.5° sweep, all valid samples



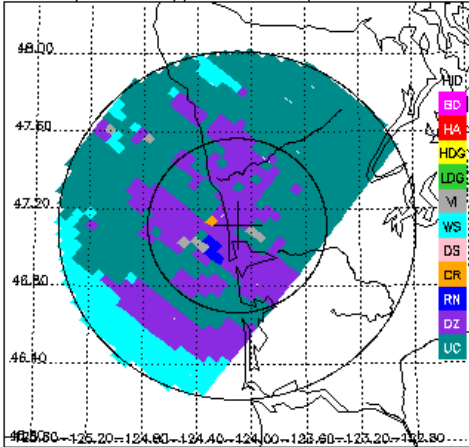
KLGX CZ, 0.5° sweep, all valid samples



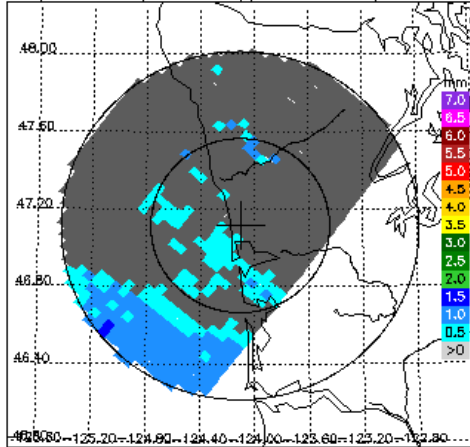
KLGX DR, 0.5° sweep, all valid samples



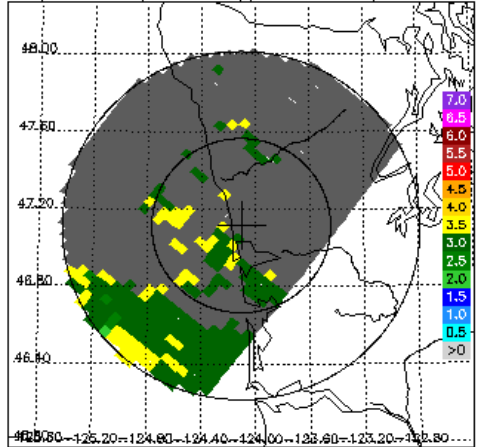
KLGX FH, 0.5° sweep, all valid samples



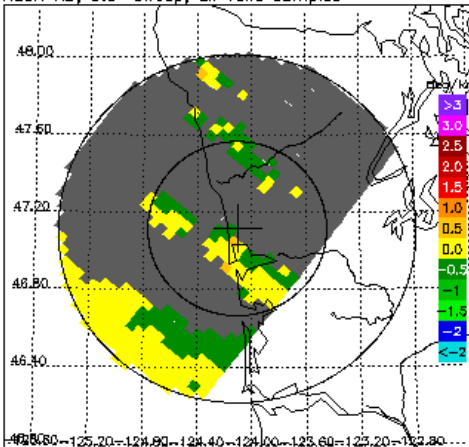
DPR/2ADPR Dm, 0.5° sweep, all valid samples



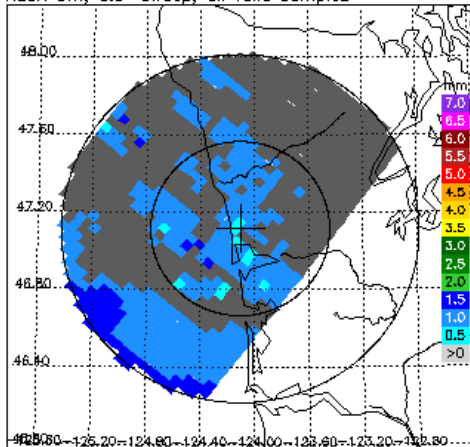
DPR/2ADPR NW, 0.5° sweep, all valid samples



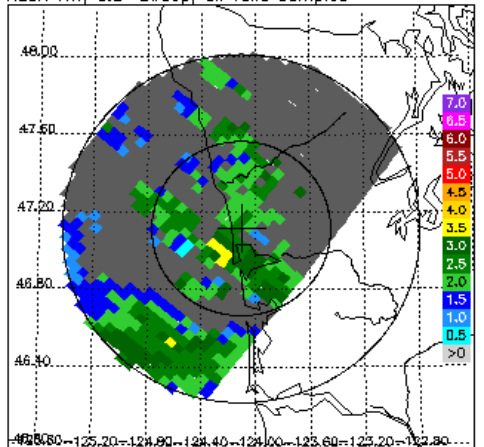
KLGX KD, 0.5° sweep, all valid samples



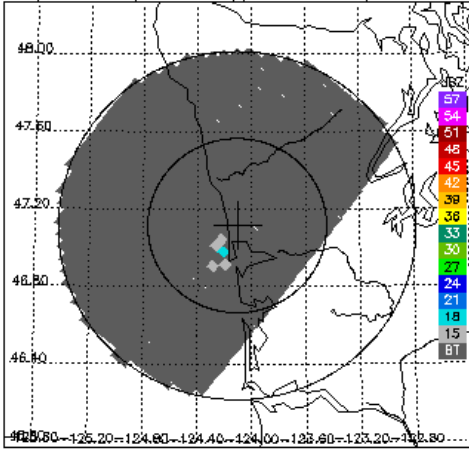
KLGX Dm, 0.5° sweep, all valid samples



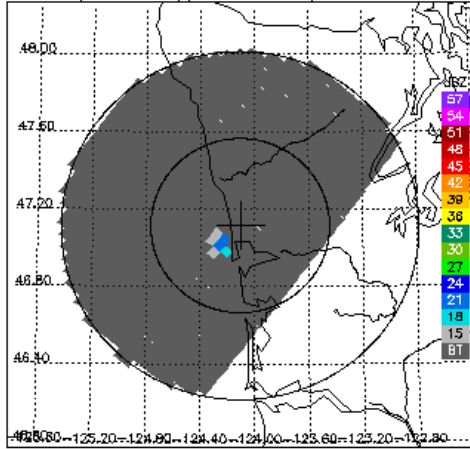
KLGX NW, 0.5° sweep, all valid samples



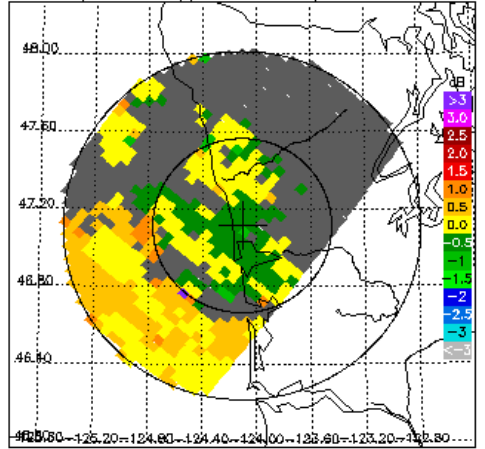
DPR/2ADPR CZ, 1.5° sweep, all valid samples



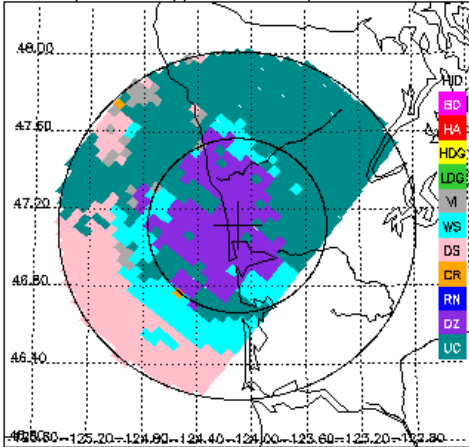
KLGX CZ, 1.5° sweep, all valid samples



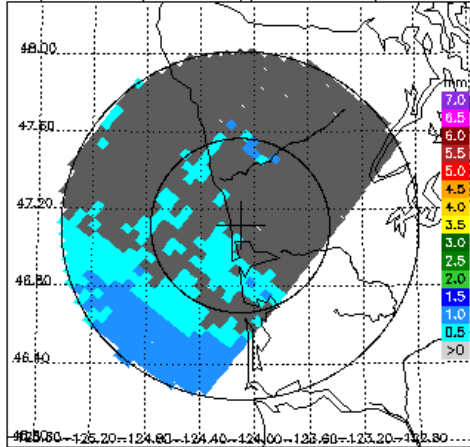
KLGX DR, 1.5° sweep, all valid samples



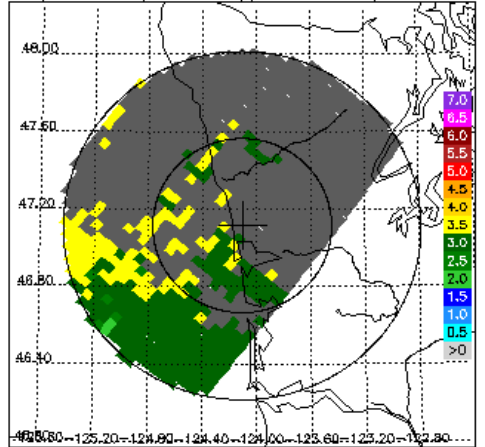
KLGX FH, 1.5° sweep, all valid samples



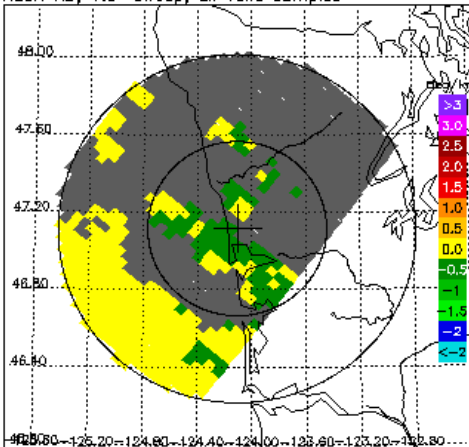
DPR/2ADPR Dm, 1.5° sweep, all valid samples



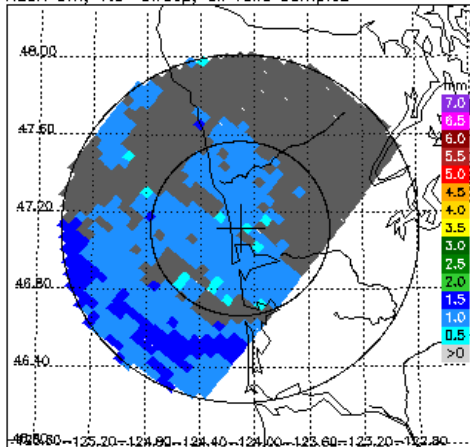
DPR/2ADPR NW, 1.5° sweep, all valid samples



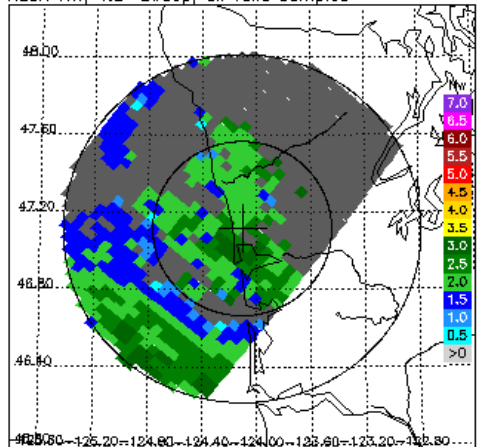
KLGX KD, 1.5° sweep, all valid samples



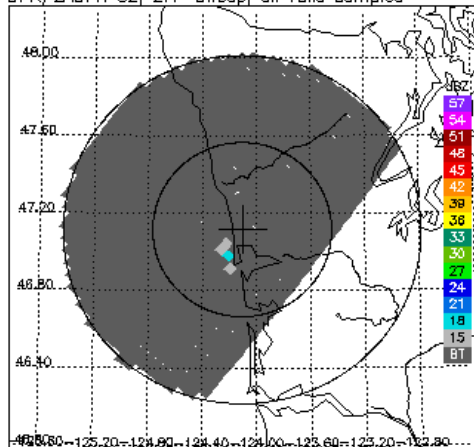
KLGX Dm, 1.5° sweep, all valid samples



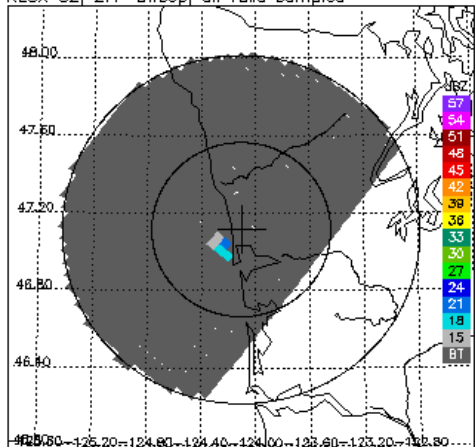
KLGX NW, 1.5° sweep, all valid samples



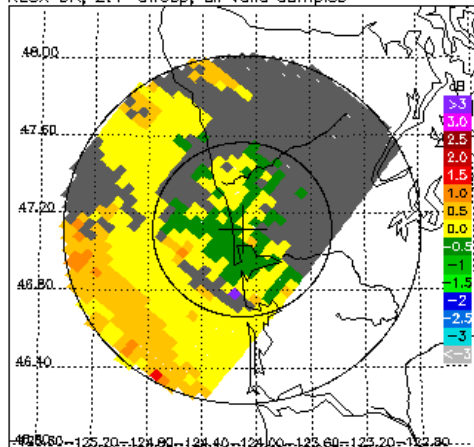
DPR/2ADPR CZ, 2.4° sweep, all valid samples



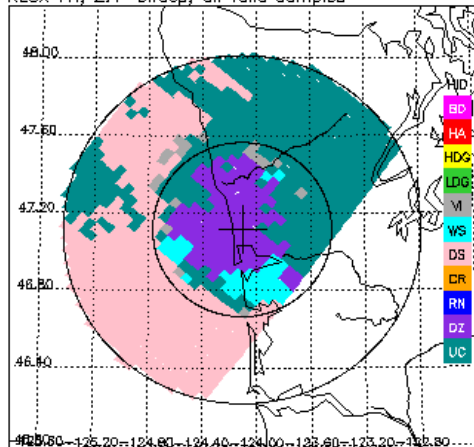
KLGX CZ, 2.4° sweep, all valid samples



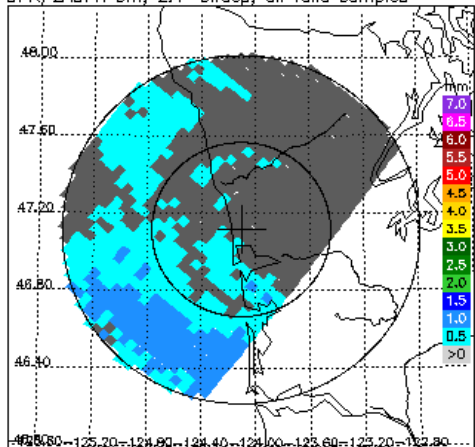
KLGX DR, 2.4° sweep, all valid samples



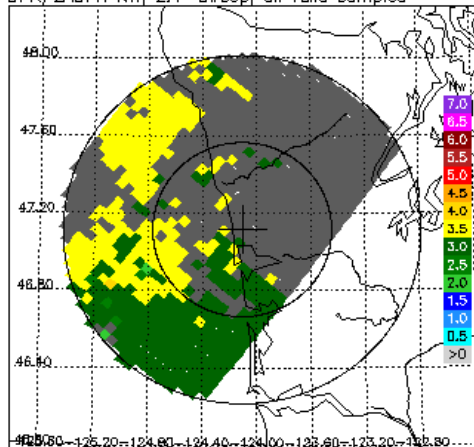
KLGX FH, 2.4° sweep, all valid samples



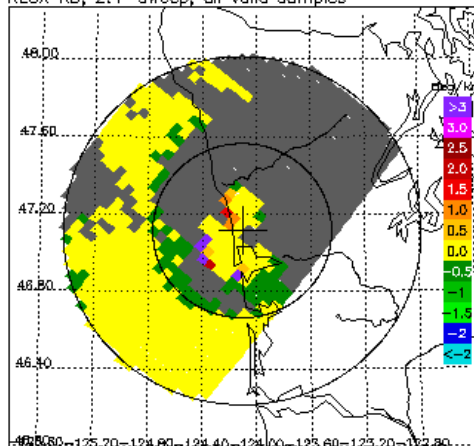
DPR/2ADPR Dm, 2.4° sweep, all valid samples



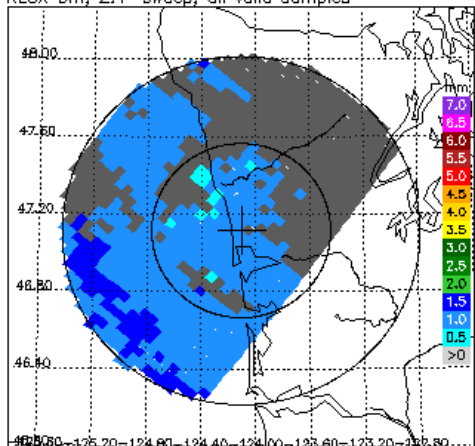
DPR/2ADPR NW, 2.4° sweep, all valid samples



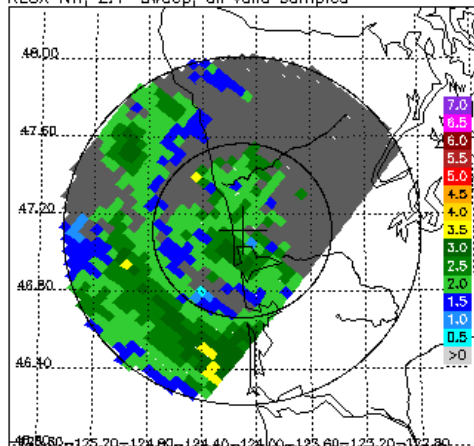
KLGX KD, 2.4° sweep, all valid samples



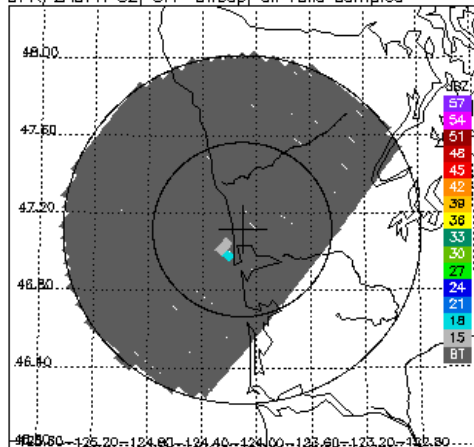
KLGX Dm, 2.4° sweep, all valid samples



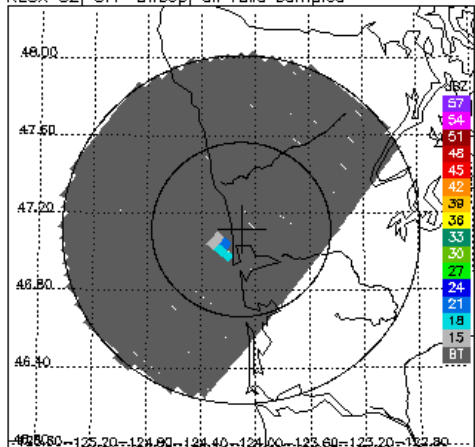
KLGX NW, 2.4° sweep, all valid samples



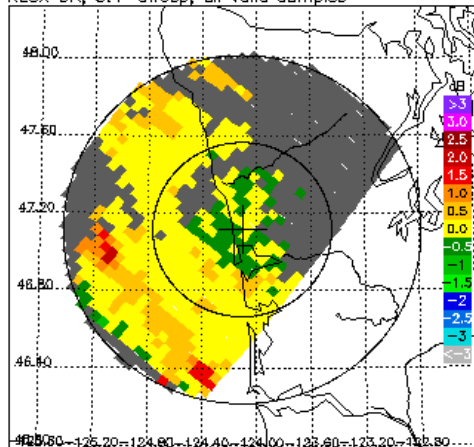
DPR/2ADPR CZ, 3.4° sweep, all valid samples



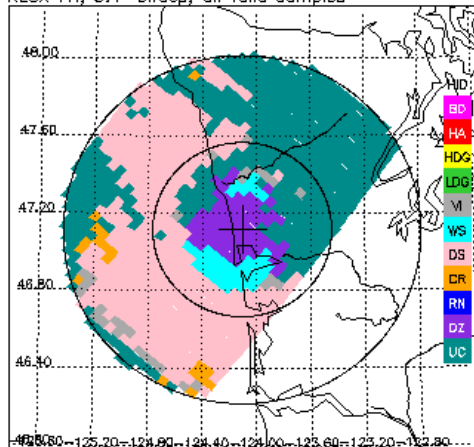
KLGX CZ, 3.4° sweep, all valid samples



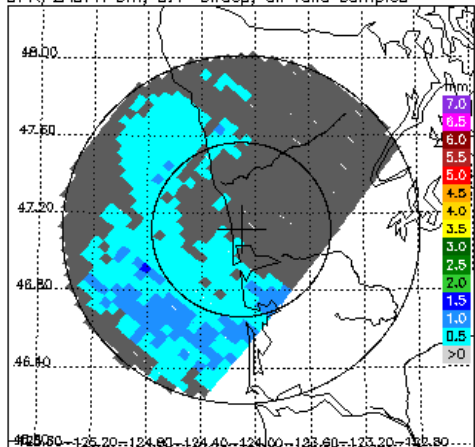
KLGX DR, 3.4° sweep, all valid samples



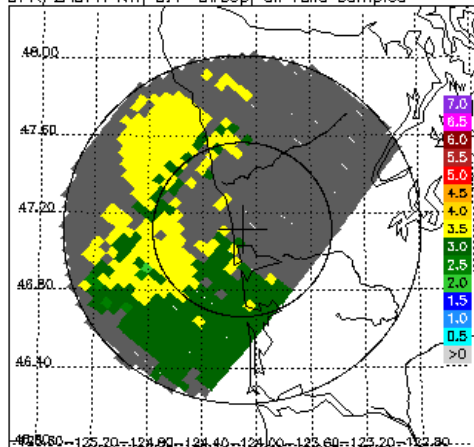
KLGX FH, 3.4° sweep, all valid samples



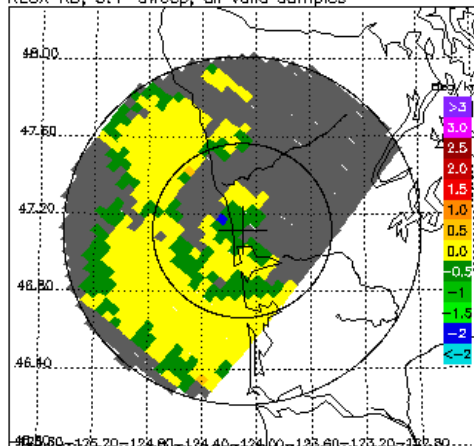
DPR/2ADPR Dm, 3.4° sweep, all valid samples



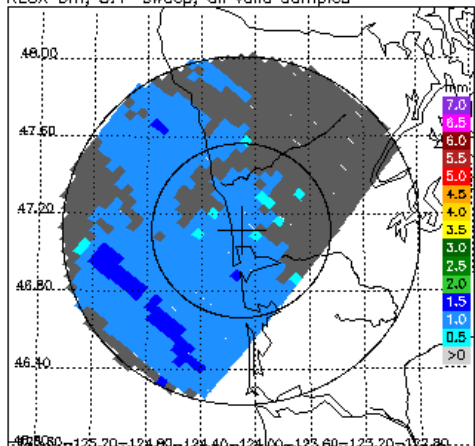
DPR/2ADPR NW, 3.4° sweep, all valid samples



KLGX KD, 3.4° sweep, all valid samples



KLGX Dm, 3.4° sweep, all valid samples



KLGX NW, 3.4° sweep, all valid samples

