

KLGX Ku-adjusted DSD vs. DPR 2ADPR/NS/V04A -- All non-missing pairs
Orbit: 10629 -- GR Start Time: 2016-01-11 20:00:49

DPR 2ADPR-GR Reflectivity difference statistics (dBZ) - GR Site: KLGX
 Orbit: 10629 Version: V04A Swath Type: NS
 DPR time = 2016-01-11 20:02:49 GR start time = 2016-01-11 20:00:49
 Required percent of above-threshold DPR and GR bins in matched volumes >= 0%
 Filtering by GR_blockage Land/Ocean Category criteria.
 GR reflectivity has S-to-Ku frequency adjustments applied.

Mean Reflectivity Statistics grouped by fixed height levels (km):

Vert. Layer	Any Rain Type		Stratiform		Convective		Dataset Statistics		
	DPR-GR	NumPts	DPR-GR	NumPts	DPR-GR	NumPts	AvgDist	DPRMaxZ	GRMaxZ
1.0	1.147	97	1.134	89	1.529	7	65.300	33.500	29.821 @ BB
2.0	2.489	35	2.428	31	2.874	3	55.726	23.222	21.136 @ BB
3.0	0.872	10	1.195	6	1.719	2	72.429	22.870	23.886
4.0	1.051	4	0.596	2	-99.999	0	77.180	21.453	21.348
5.0	2.865	2	2.865	2	-99.999	0	81.742	18.564	16.753

No above-threshold points at height 6.000

Mean Reflectivity Statistics grouped by proximity to Bright Band:

Surface type	Any Rain Type		Stratiform		Convective		Dataset Statistics		
	DPR-GR	NumPts	DPR-GR	NumPts	DPR-GR	NumPts	AvgDist	DPRMaxZ	GRMaxZ
Below	1.296	26	1.387	24	-99.999	0	40.232	28.060	25.848

GR Dm field is being directly compared to DPR Dm.

Mean Drop Diameter (Dm, in mm) Statistics grouped by fixed height levels (km):

Vert. Layer	Any Rain Type		Stratiform		Convective		Dataset Statistics		
	DPR-GR	NumPts	DPR-GR	NumPts	DPR-GR	NumPts	AvgDist	DPRMaxDm	GRMaxDm
1.0	-0.176	1	-0.176	1	-99.999	0	19.515	0.910	1.086 @ BB

No above-threshold points at height 2.000

No above-threshold points at height 3.000

No above-threshold points at height 4.000

No above-threshold points at height 5.000

No above-threshold points at height 6.000

Mean Drop Diameter (Dm, in mm) Statistics grouped by proximity to Bright Band:

Surface type	Any Rain Type		Stratiform		Convective		Dataset Statistics		
	DPR-GR	NumPts	DPR-GR	NumPts	DPR-GR	NumPts	AvgDist	DPRMaxDm	GRMaxDm
Below	0.029	27	0.053	25	-99.999	0	40.430	1.710	1.326

GR NW field is being directly compared to DPR Nw.

Mean Normalized Intercept Parameter (log10(Nw)) Statistics grouped by fixed height levels (km):

Vert. Layer	Any Rain Type		Stratiform		Convective		Dataset Statistics		
	DPR-GR	NumPts	DPR-GR	NumPts	DPR-GR	NumPts	AvgDist	DPRMaxNw	GRMaxNw
1.0	0.277	1	0.277	1	-99.999	0	19.515	3.229	2.952 @ BB

No above-threshold points at height 2.000

No above-threshold points at height 3.000

No above-threshold points at height 4.000

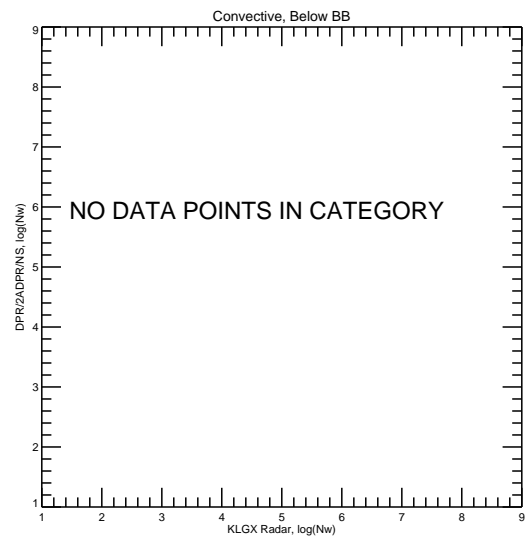
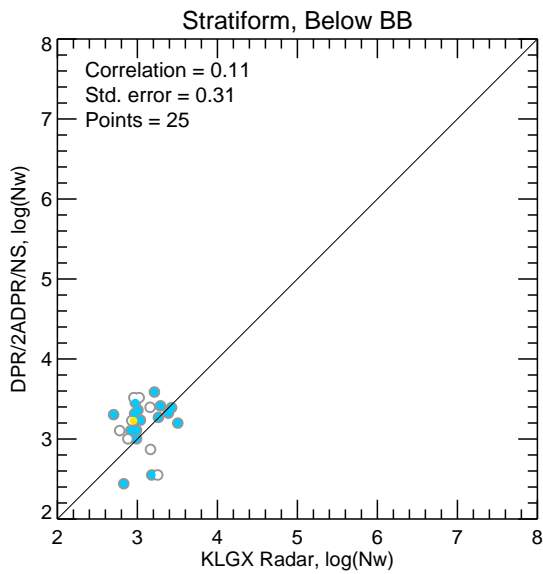
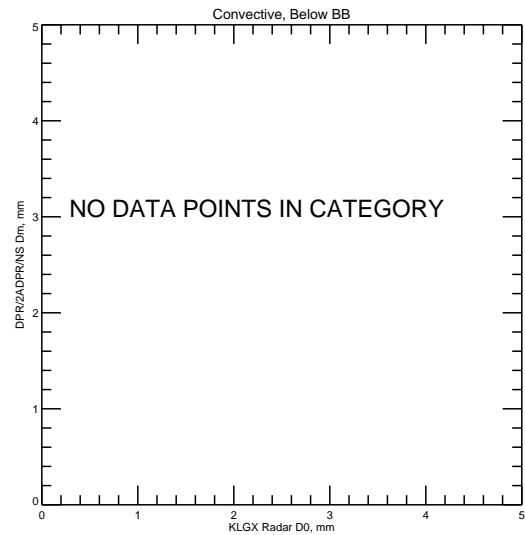
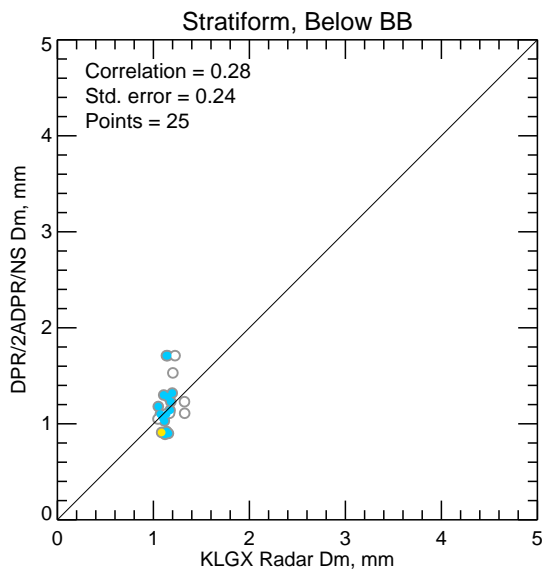
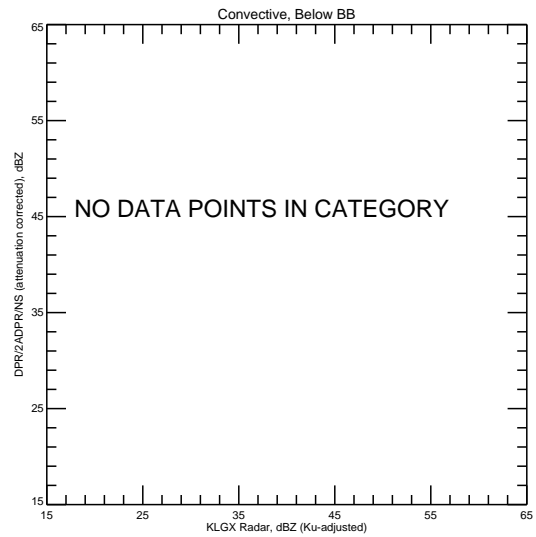
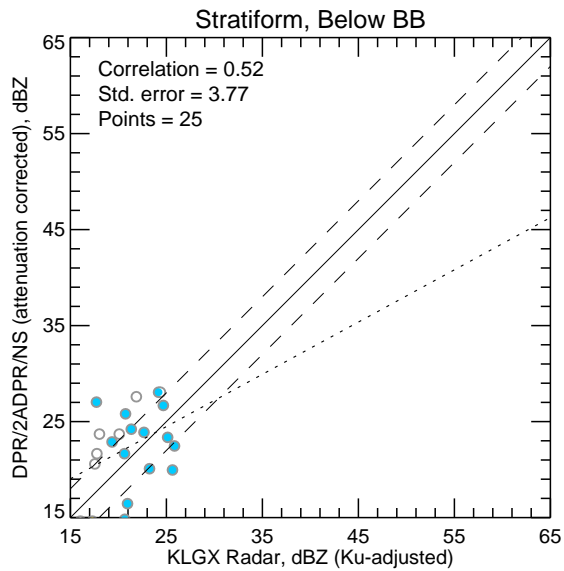
No above-threshold points at height 5.000

No above-threshold points at height 6.000

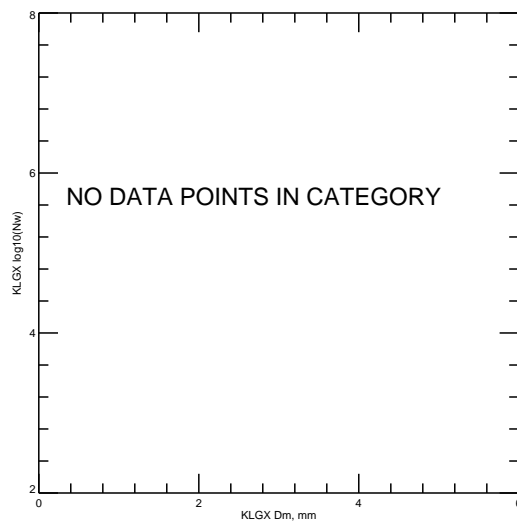
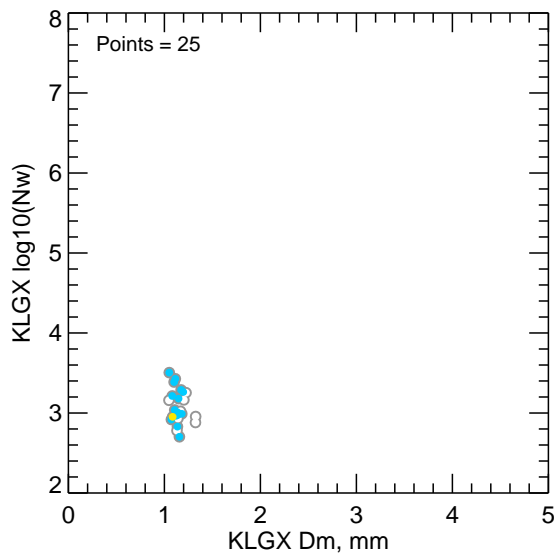
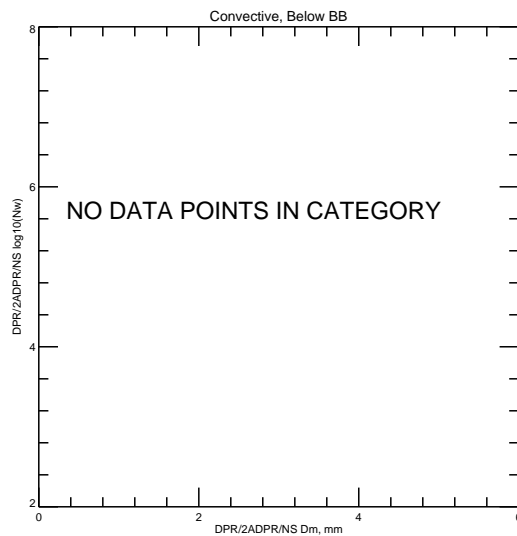
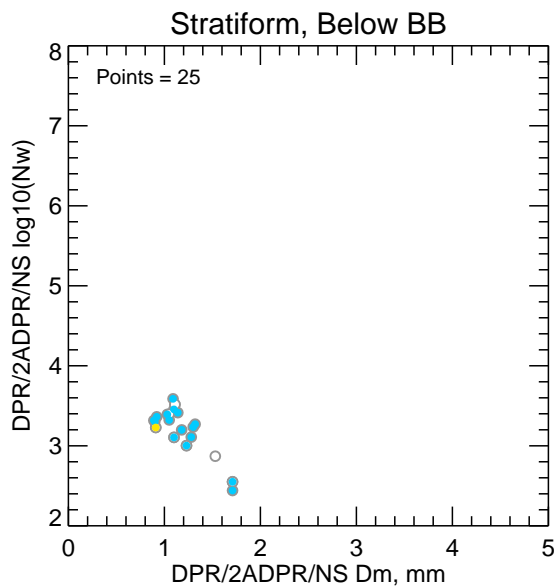
Mean Normalized Intercept Parameter (log10(Nw)) Statistics grouped by proximity to Bright Band:

Surface type	Any Rain Type		Stratiform		Convective		Dataset Statistics		
	DPR-GR	NumPts	DPR-GR	NumPts	DPR-GR	NumPts	AvgDist	DPRMaxNw	GRMaxNw
Below	0.143	27	0.087	25	-99.999	0	40.430	3.900	3.505

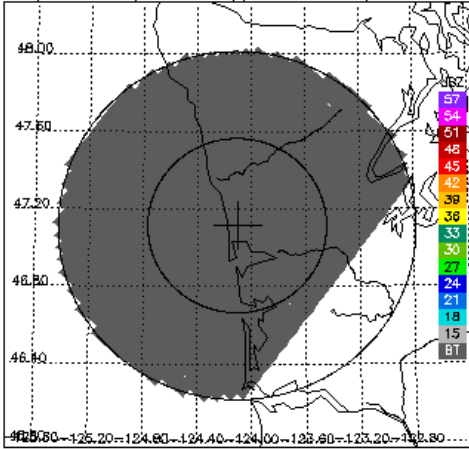
KLGX Ku-adjusted DSD vs. DPR 2ADPR/NS/V04A -- All non-missing pairs



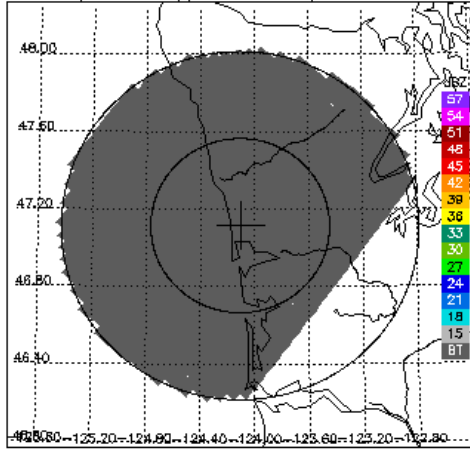
Dm vs. log₁₀(Nw) for DPR 2ADPR/NS/V04A and KLGX -- All non-missing pairs



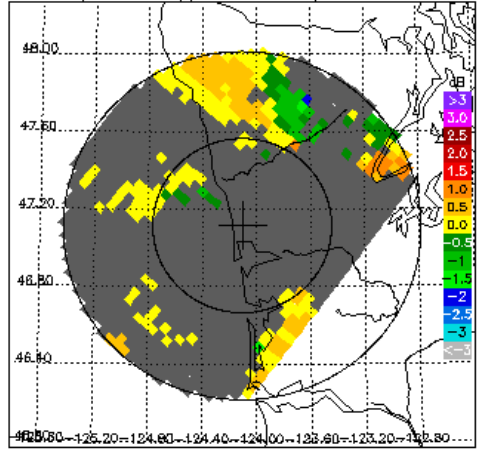
DPR/2ADPR CZ, 0.2° sweep, all valid samples



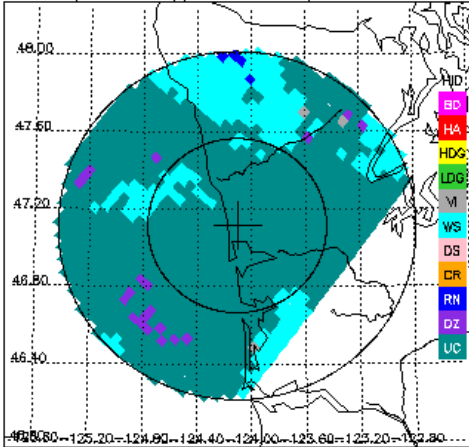
KLGX CZ, 0.2° sweep, all valid samples



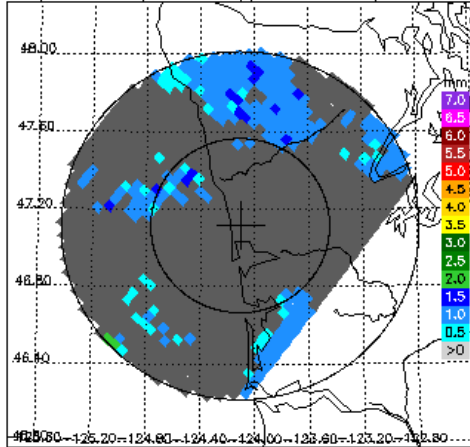
KLGX DR, 0.2° sweep, all valid samples



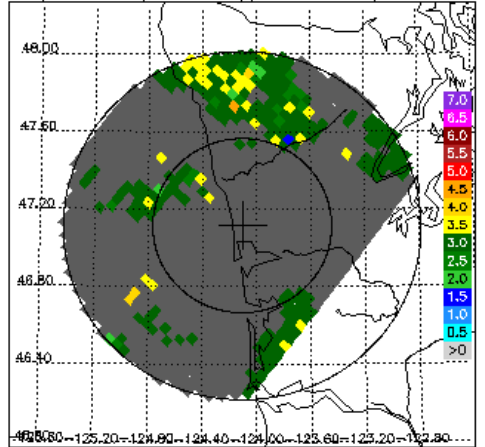
KLGX FH, 0.2° sweep, all valid samples



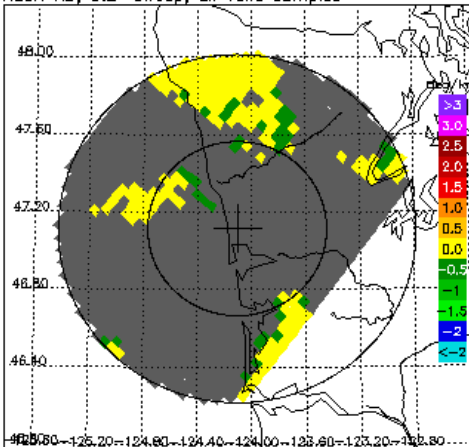
DPR/2ADPR Dm, 0.2° sweep, all valid samples



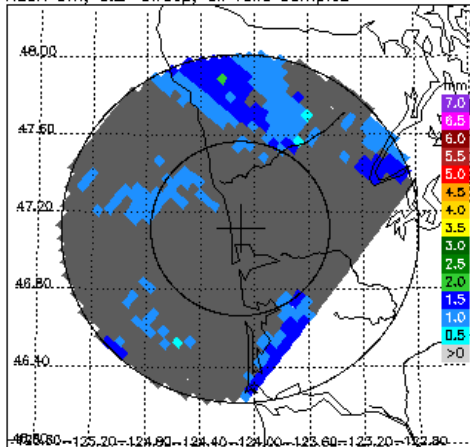
DPR/2ADPR NW, 0.2° sweep, all valid samples



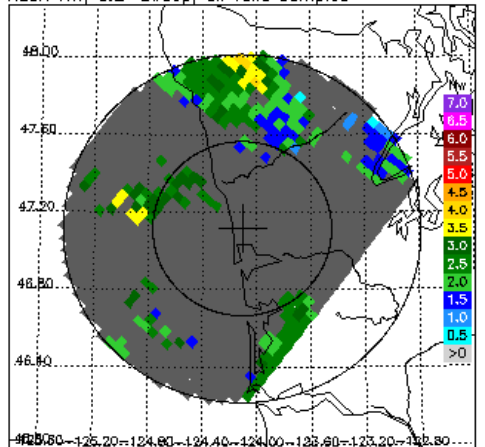
KLGX KD, 0.2° sweep, all valid samples



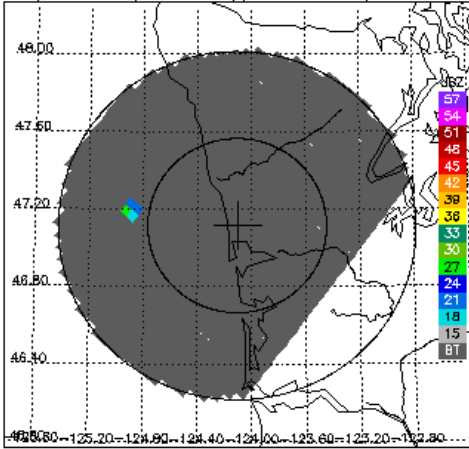
KLGX Dm, 0.2° sweep, all valid samples



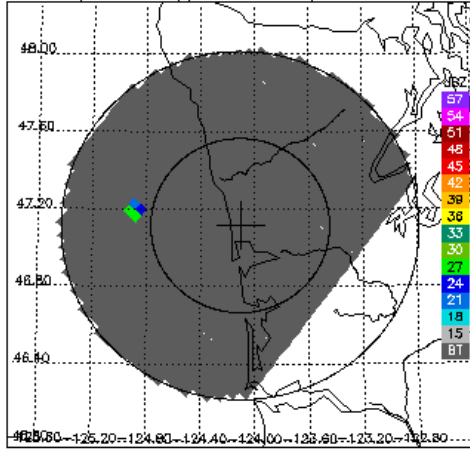
KLGX NW, 0.2° sweep, all valid samples



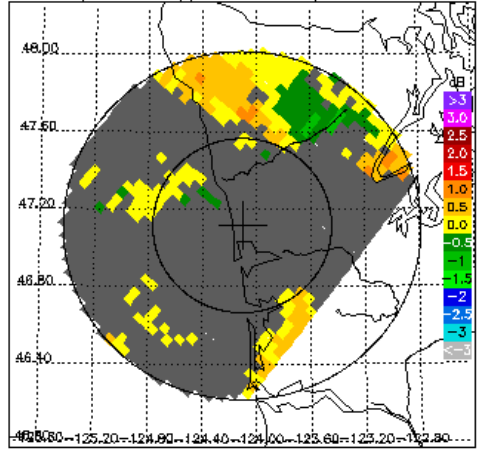
DPR/2ADPR CZ, 0.5° sweep, all valid samples



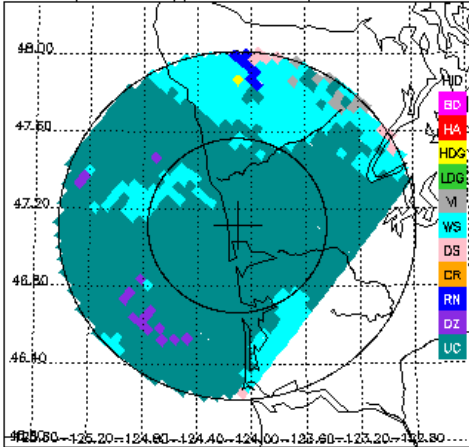
KLGX CZ, 0.5° sweep, all valid samples



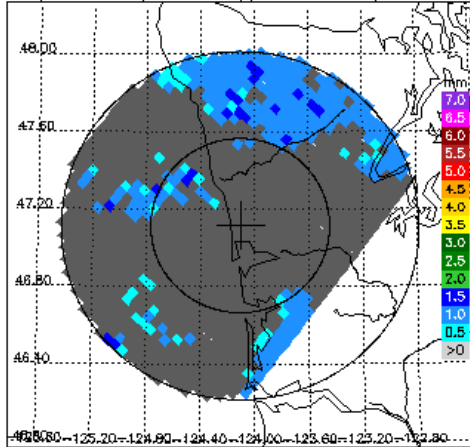
KLGX DR, 0.5° sweep, all valid samples



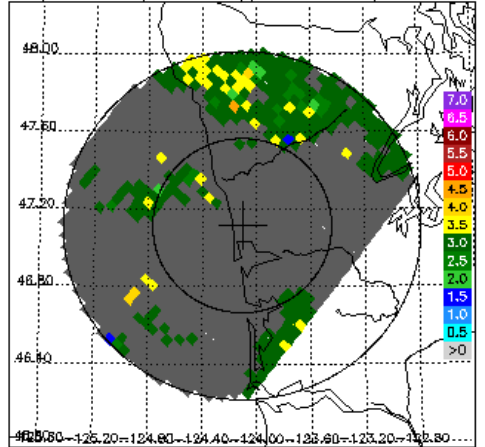
KLGX FH, 0.5° sweep, all valid samples



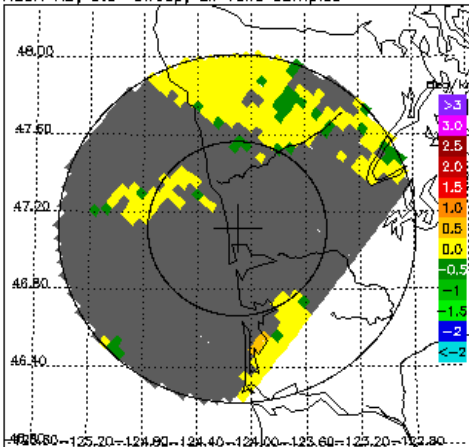
DPR/2ADPR Dm, 0.5° sweep, all valid samples



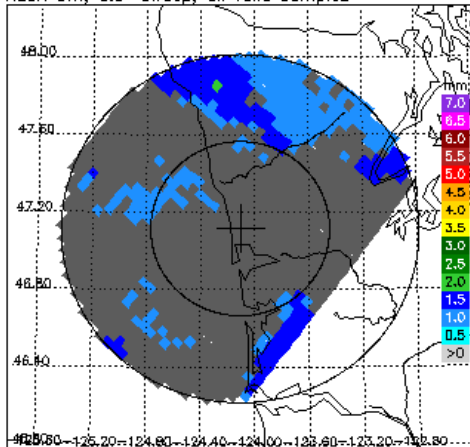
DPR/2ADPR NW, 0.5° sweep, all valid samples



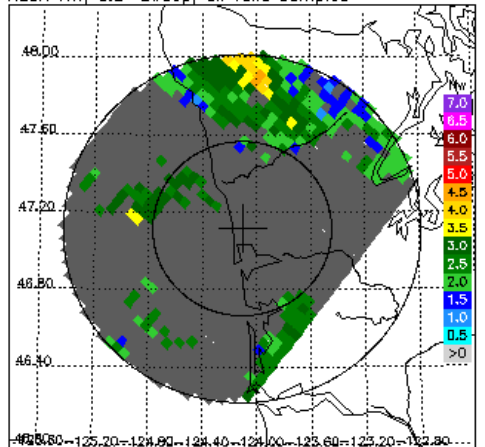
KLGX KD, 0.5° sweep, all valid samples



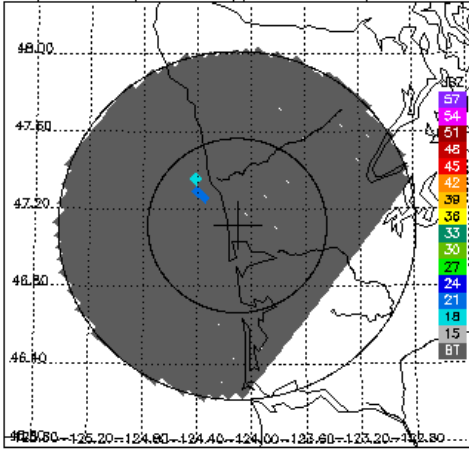
KLGX Dm, 0.5° sweep, all valid samples



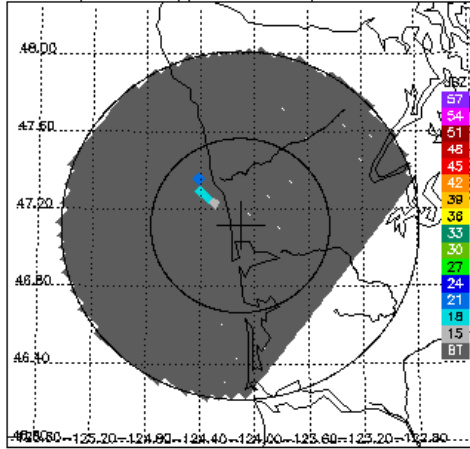
KLGX NW, 0.5° sweep, all valid samples



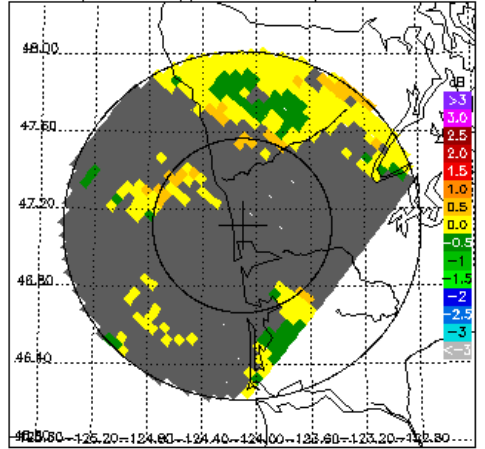
DPR/2ADPR CZ, 1.5° sweep, all valid samples



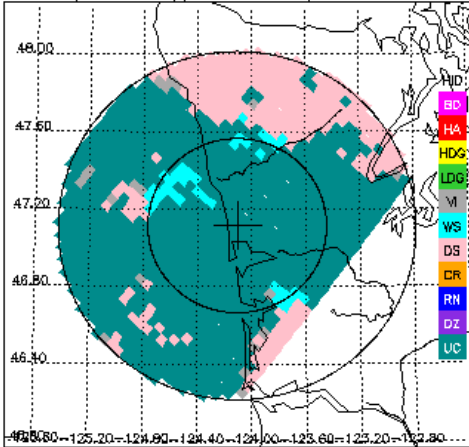
KLGX CZ, 1.5° sweep, all valid samples



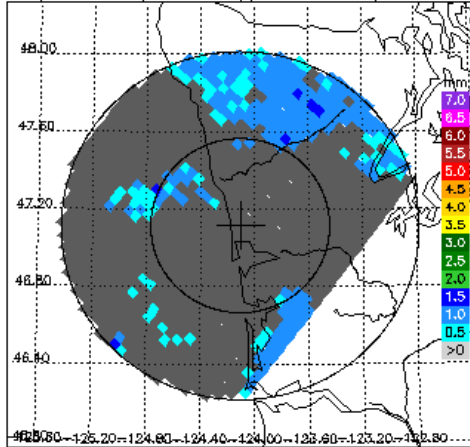
KLGX DR, 1.5° sweep, all valid samples



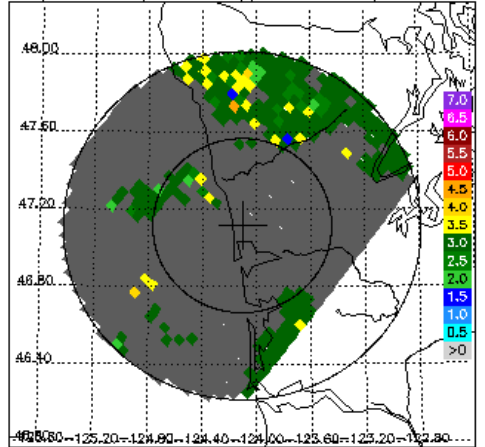
KLGX FH, 1.5° sweep, all valid samples



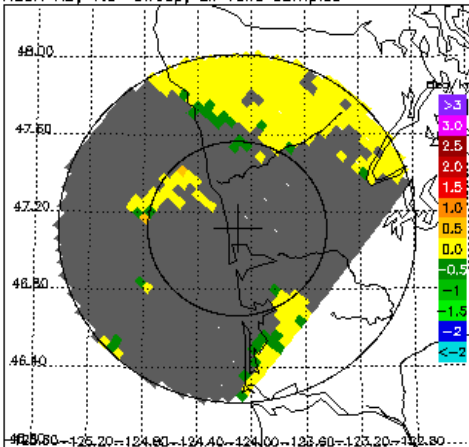
DPR/2ADPR Dm, 1.5° sweep, all valid samples



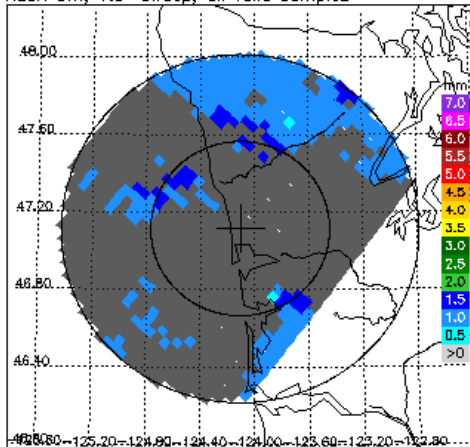
DPR/2ADPR NW, 1.5° sweep, all valid samples



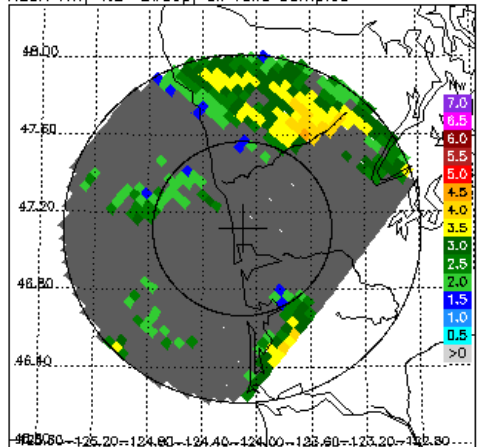
KLGX KD, 1.5° sweep, all valid samples



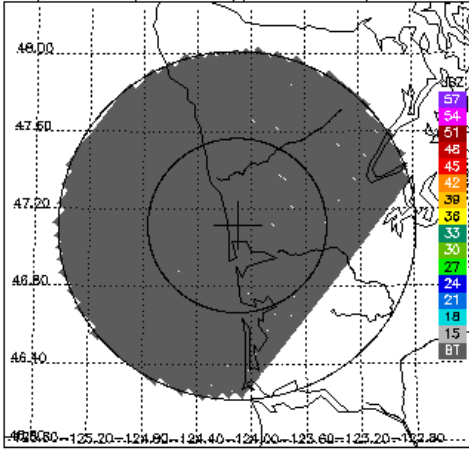
KLGX Dm, 1.5° sweep, all valid samples



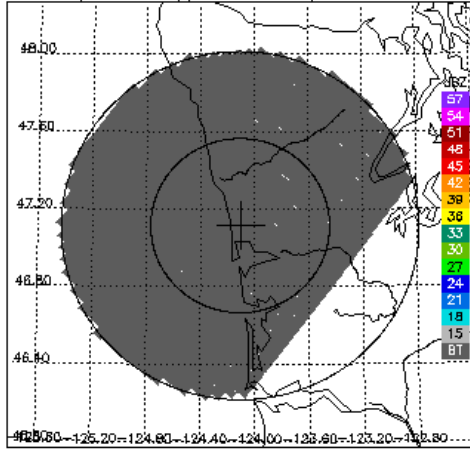
KLGX NW, 1.5° sweep, all valid samples



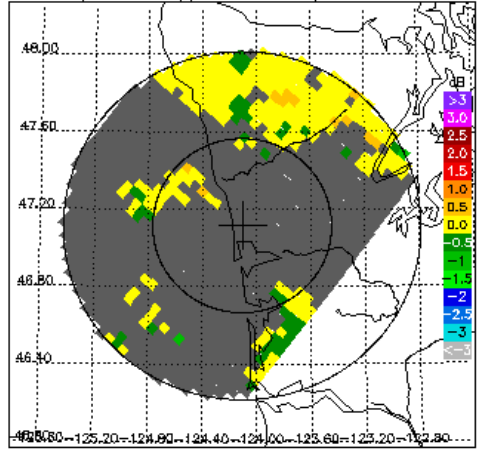
DPR/2ADPR CZ, 2.4° sweep, all valid samples



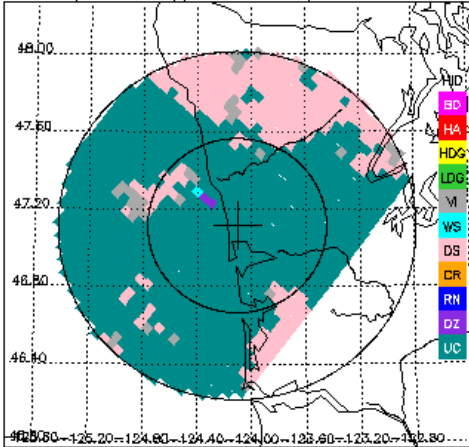
KLGX CZ, 2.4° sweep, all valid samples



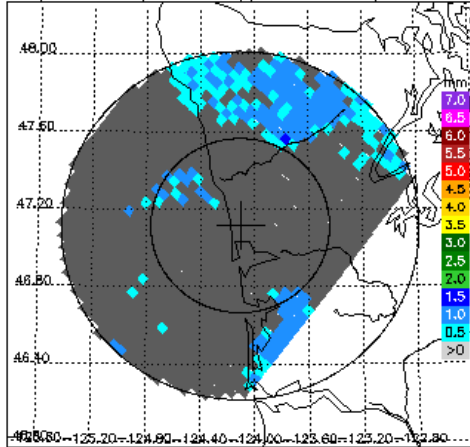
KLGX DR, 2.4° sweep, all valid samples



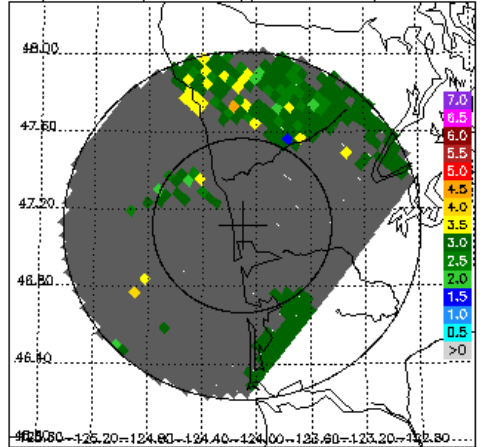
KLGX FH, 2.4° sweep, all valid samples



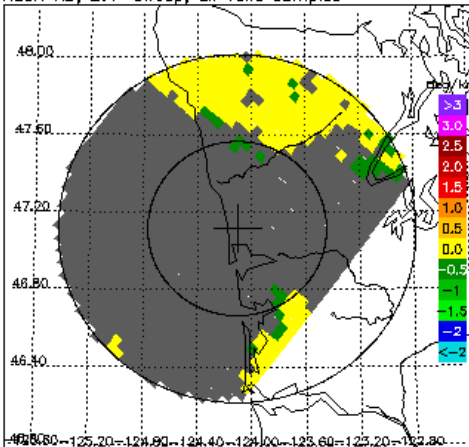
DPR/2ADPR Dm, 2.4° sweep, all valid samples



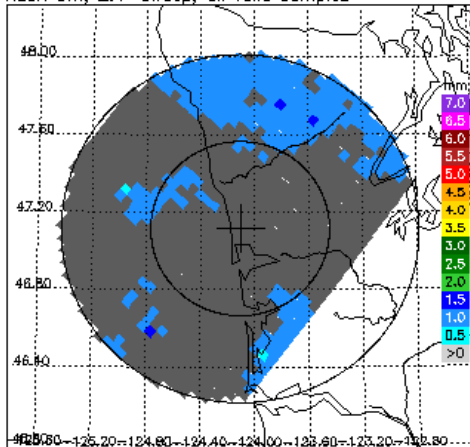
DPR/2ADPR NW, 2.4° sweep, all valid samples



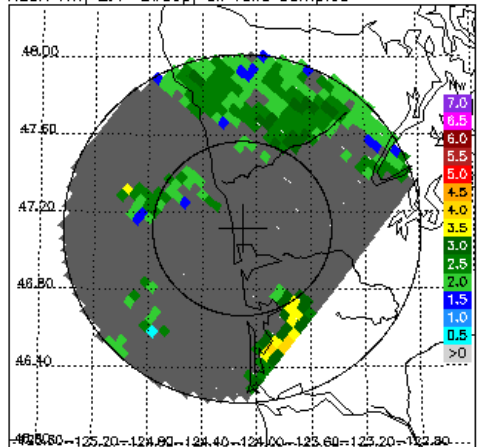
KLGX KD, 2.4° sweep, all valid samples



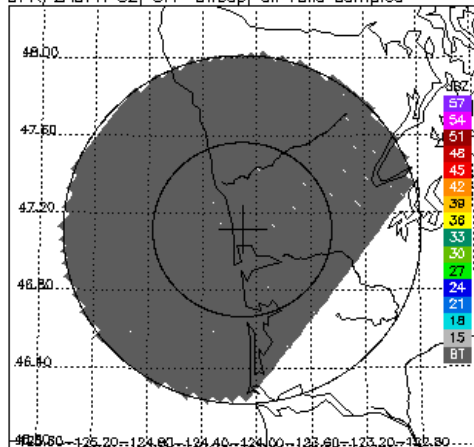
KLGX Dm, 2.4° sweep, all valid samples



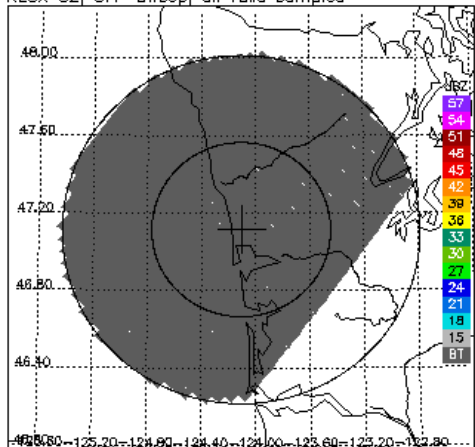
KLGX NW, 2.4° sweep, all valid samples



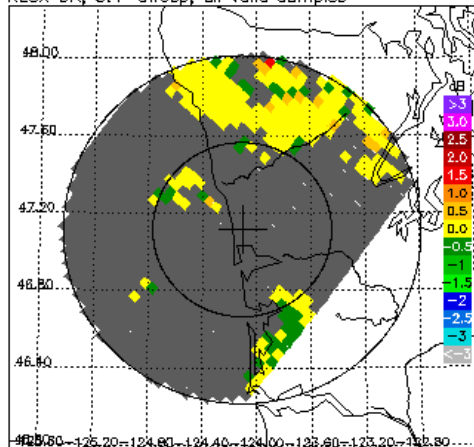
DPR/2ADPR CZ, 3.4° sweep, all valid samples



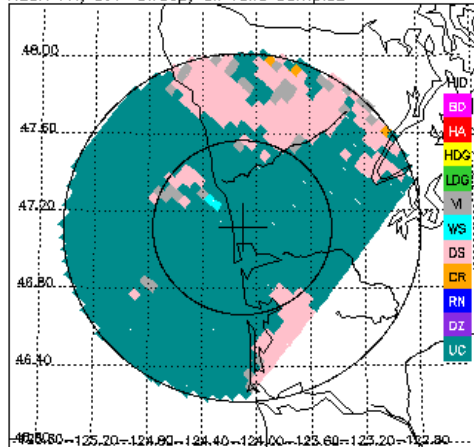
KLGX CZ, 3.4° sweep, all valid samples



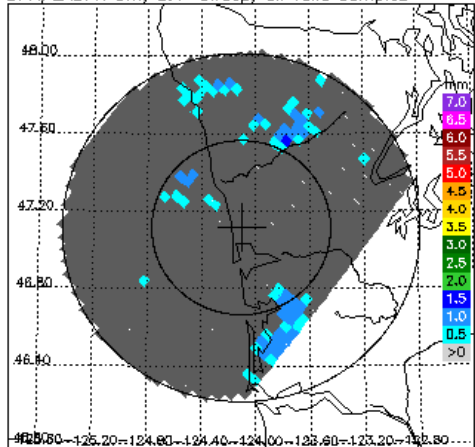
KLGX DR, 3.4° sweep, all valid samples



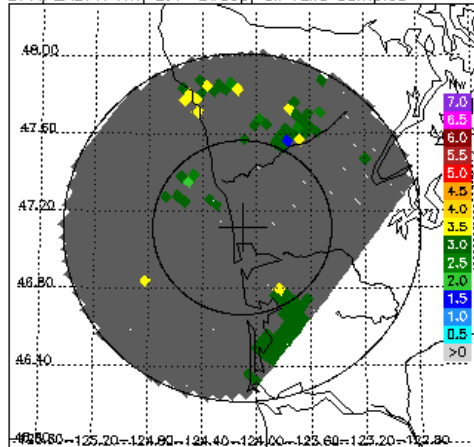
KLGX FH, 3.4° sweep, all valid samples



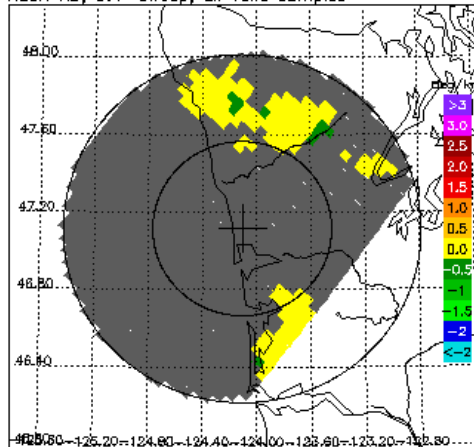
DPR/2ADPR Dm, 3.4° sweep, all valid samples



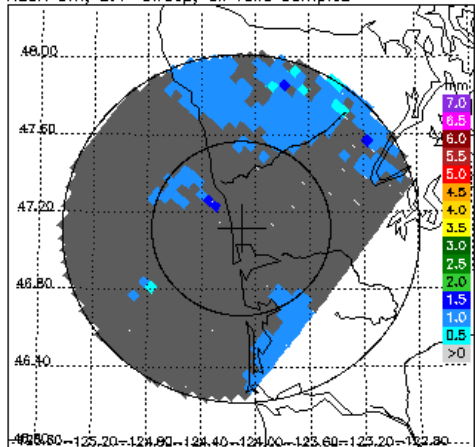
DPR/2ADPR NW, 3.4° sweep, all valid samples



KLGX KD, 3.4° sweep, all valid samples



KLGX Dm, 3.4° sweep, all valid samples



KLGX NW, 3.4° sweep, all valid samples

