

KLGX Ku-adjusted DSD vs. DPR 2ADPR/NS/V04A -- All non-missing pairs
 Orbit: 10875 -- GR Start Time: 2016-01-27 15:23:22

DPR 2ADPR-GR Reflectivity difference statistics (dBZ) - GR Site: KLGX
 Orbit: 10875 Version: V04A Swath Type: NS
 DPR time = 2016-01-27 15:21:31 GR start time = 2016-01-27 15:23:22
 Required percent of above-threshold DPR and GR bins in matched volumes >= 0%
 Filtering by GR_blockage Land/Ocean Category criteria.
 GR reflectivity has S-to-Ku frequency adjustments applied.

Mean Reflectivity Statistics grouped by fixed height levels (km):

Vert. Layer	Any Rain Type		Stratiform		Convective		Dataset Statistics		
	DPR-GR	NumPts	DPR-GR	NumPts	DPR-GR	NumPts	AvgDist	DPRMaxZ	GRMaxZ
1.0	0.969	72	0.845	69	3.684	3	42.580	30.458	29.198
2.0	0.581	80	1.617	68	-1.358	1	34.574	35.193	35.900 @ BB
3.0	1.055	56	1.007	44	2.041	1	40.277	26.603	32.448 @ BB
4.0	1.648	40	2.208	14	-99.999	0	68.610	17.847	18.508
5.0	1.143	33	1.035	8	-99.999	0	68.340	17.494	17.390
6.0	3.911	18	4.455	2	-99.999	0	70.581	18.817	17.660
7.0	5.884	1	-99.999	0	-99.999	0	85.396	16.411	10.528

No above-threshold points at height 8.000

Mean Reflectivity Statistics grouped by proximity to Bright Band:

Surface type	Any Rain Type		Stratiform		Convective		Dataset Statistics		
	DPR-GR	NumPts	DPR-GR	NumPts	DPR-GR	NumPts	AvgDist	DPRMaxZ	GRMaxZ
Below	1.414	124	1.346	120	2.975	4	39.886	30.458	29.198

GR Dm field is being directly compared to DPR Dm.

Mean Drop Diameter (Dm, in mm) Statistics grouped by fixed height levels (km):

Vert. Layer	Any Rain Type		Stratiform		Convective		Dataset Statistics		
	DPR-GR	NumPts	DPR-GR	NumPts	DPR-GR	NumPts	AvgDist	DPRMaxDm	GRMaxDm
1.0	-0.142	67	-0.137	65	-0.290	2	44.244	1.490	1.476

No above-threshold points at height 2.000

No above-threshold points at height 3.000

No above-threshold points at height 4.000

No above-threshold points at height 5.000

No above-threshold points at height 6.000

No above-threshold points at height 7.000

No above-threshold points at height 8.000

Mean Drop Diameter (Dm, in mm) Statistics grouped by proximity to Bright Band:

Surface type	Any Rain Type		Stratiform		Convective		Dataset Statistics		
	DPR-GR	NumPts	DPR-GR	NumPts	DPR-GR	NumPts	AvgDist	DPRMaxDm	GRMaxDm
Below	-0.188	138	-0.184	134	-0.300	4	40.839	1.490	1.721

GR NW field is being directly compared to DPR Nw.

Mean Normalized Intercept Parameter (log10(Nw)) Statistics grouped by fixed height levels (km):

Vert. Layer	Any Rain Type		Stratiform		Convective		Dataset Statistics		
	DPR-GR	NumPts	DPR-GR	NumPts	DPR-GR	NumPts	AvgDist	DPRMaxNw	GRMaxNw
1.0	0.435	67	0.412	65	1.100	2	44.244	4.043	3.523

No above-threshold points at height 2.000

No above-threshold points at height 3.000

No above-threshold points at height 4.000

No above-threshold points at height 5.000

No above-threshold points at height 6.000

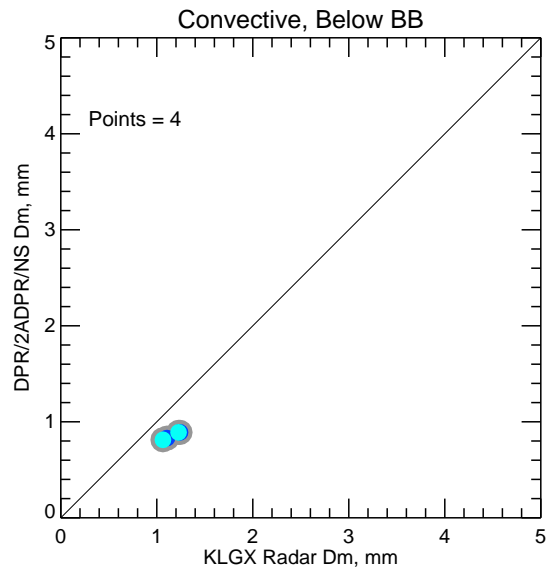
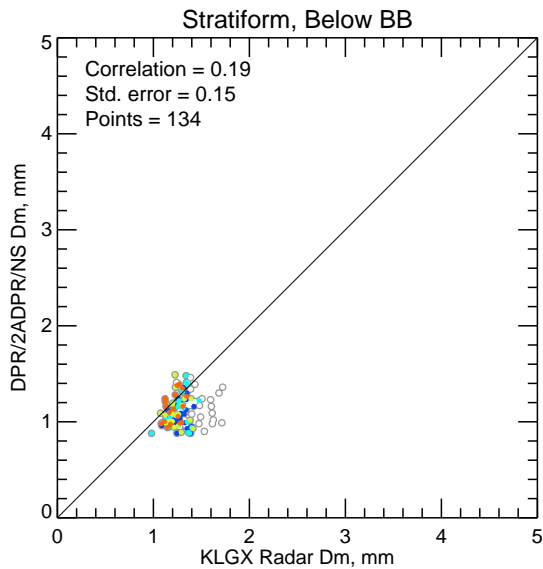
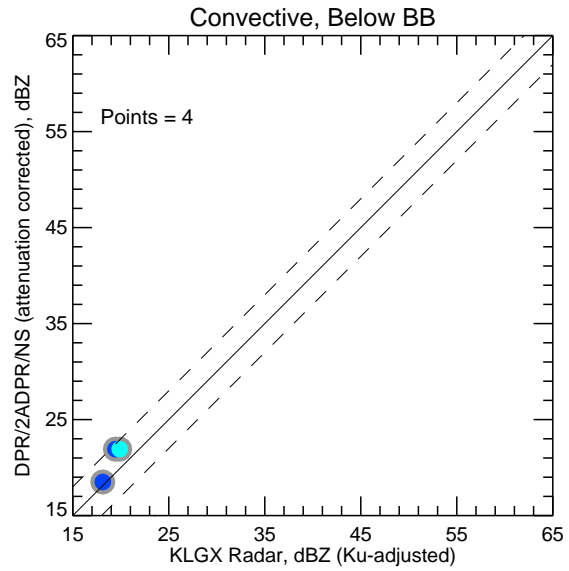
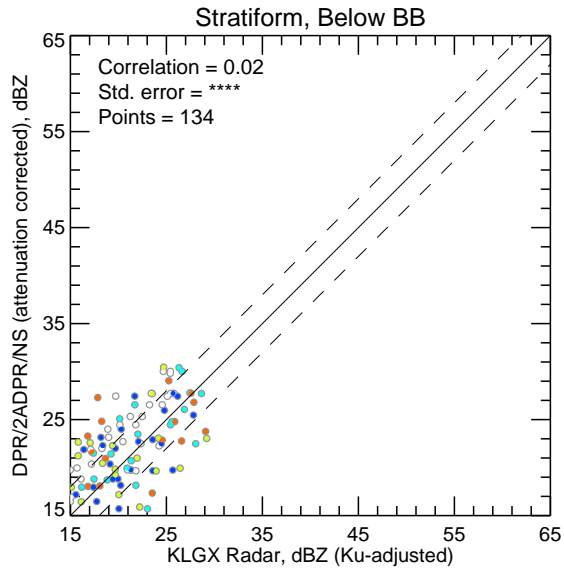
No above-threshold points at height 7.000

No above-threshold points at height 8.000

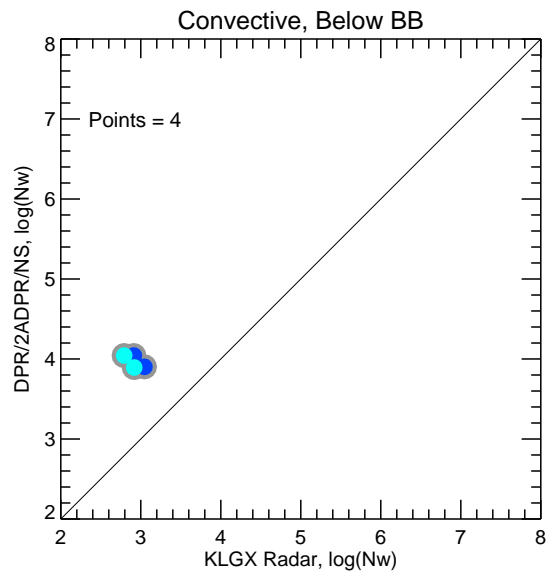
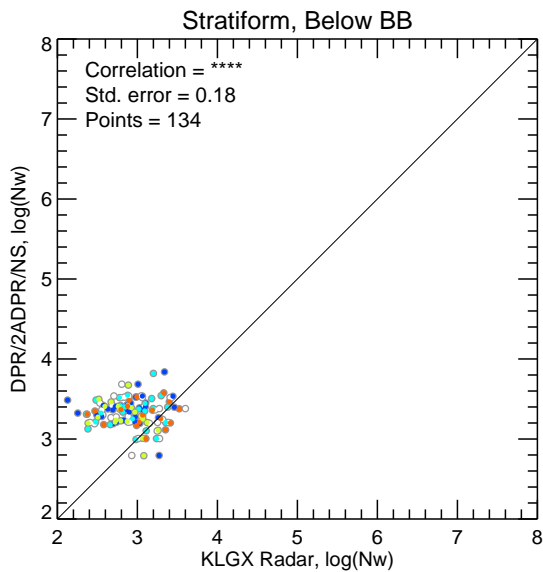
Mean Normalized Intercept Parameter (log10(Nw)) Statistics grouped by proximity to Bright Band:

Surface type	Any Rain Type		Stratiform		Convective		Dataset Statistics		
	DPR-GR	NumPts	DPR-GR	NumPts	DPR-GR	NumPts	AvgDist	DPRMaxNw	GRMaxNw
Below	0.463	138	0.441	134	1.040	4	40.839	4.043	3.600

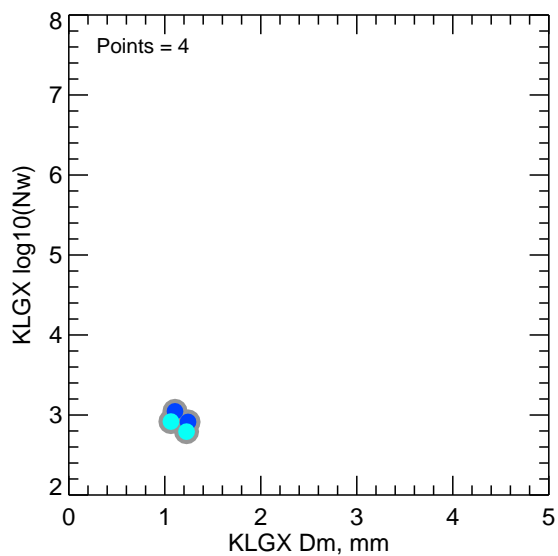
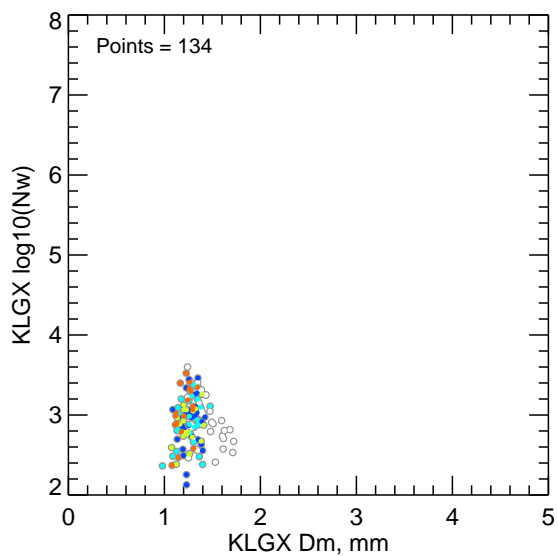
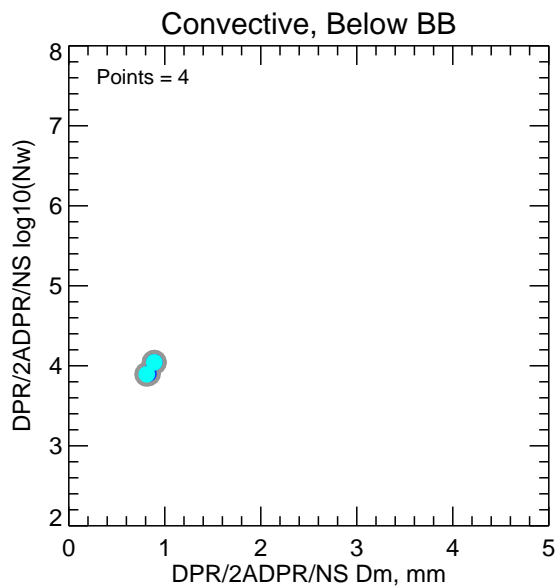
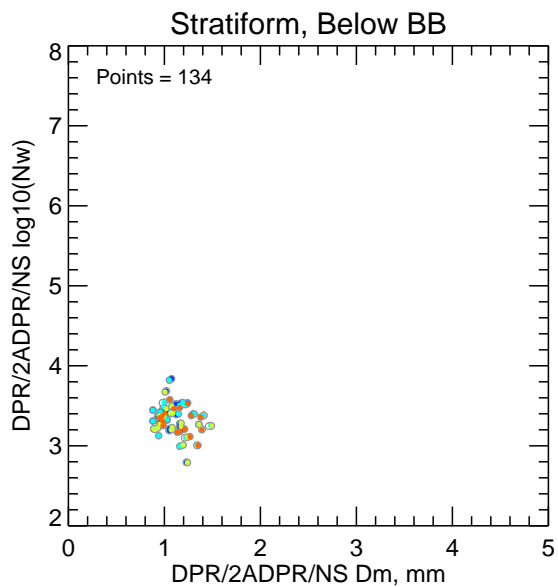
KLGX Ku-adjusted DSD vs. DPR 2ADPR/NS/V04A -- All non-missing pairs



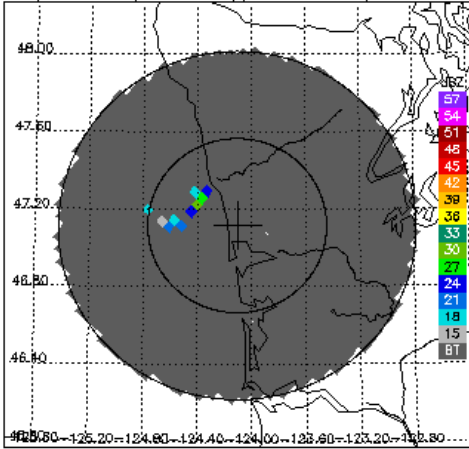
- 1.00 km
- 0.75 km
- 0.50 km
- 0.25 km
- 0.00 km



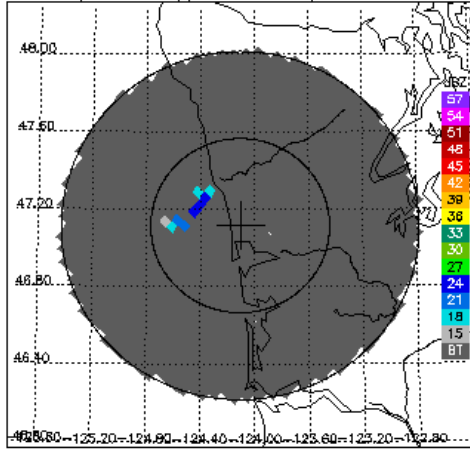
Dm vs. $\log_{10}(N_w)$ for DPR 2ADPR/NS/V04A and KLGX -- All non-missing pairs



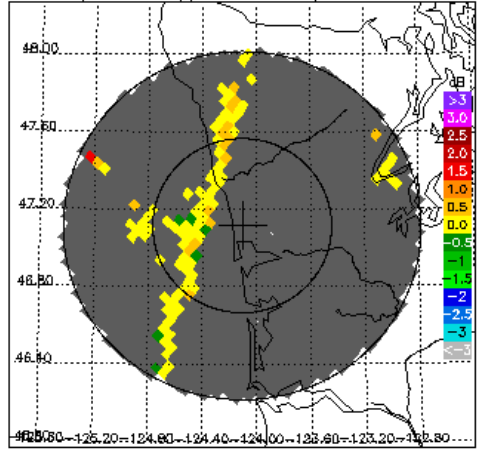
DPR/2ADPR CZ, 0.2° sweep, all valid samples



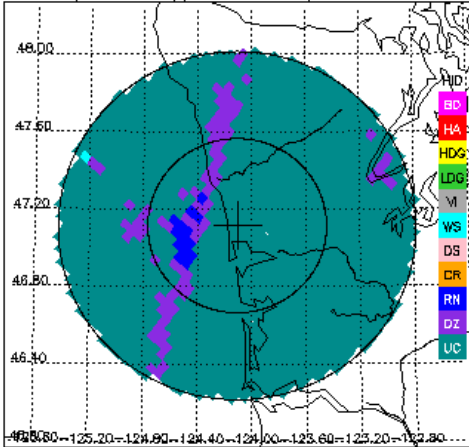
KLGX CZ, 0.2° sweep, all valid samples



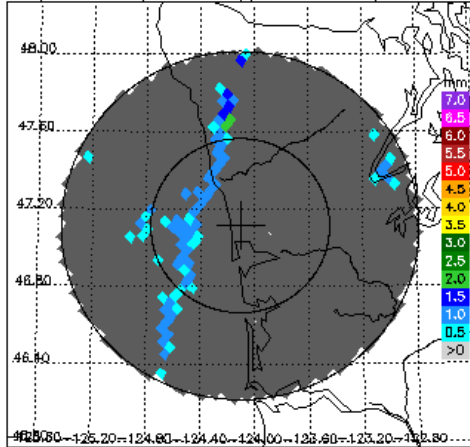
KLGX DR, 0.2° sweep, all valid samples



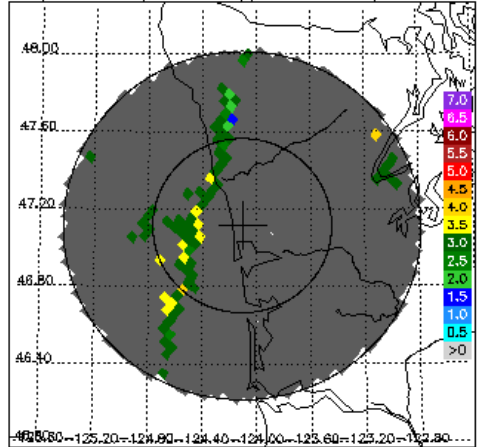
KLGX FH, 0.2° sweep, all valid samples



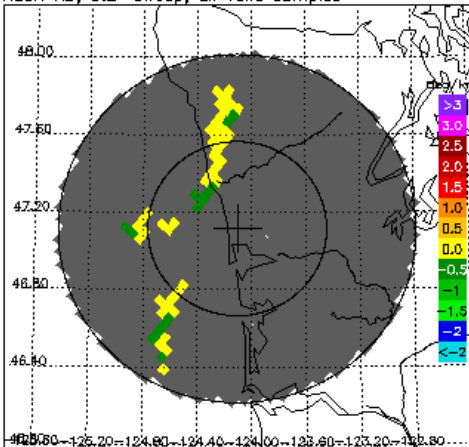
DPR/2ADPR Dm, 0.2° sweep, all valid samples



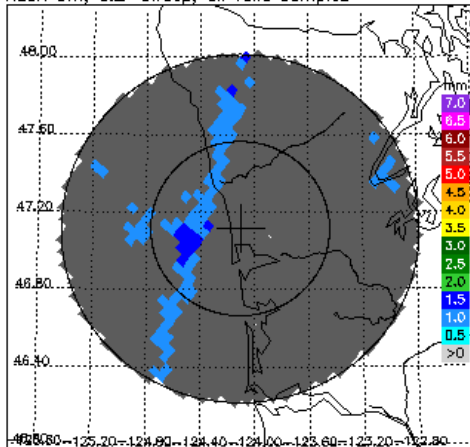
DPR/2ADPR NW, 0.2° sweep, all valid samples



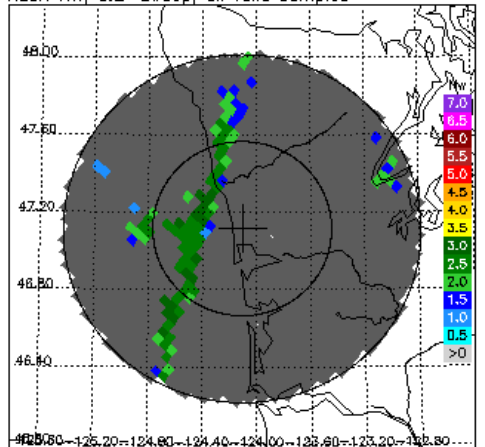
KLGX KD, 0.2° sweep, all valid samples



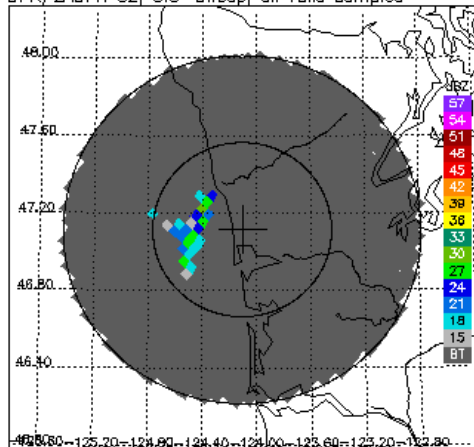
KLGX Dm, 0.2° sweep, all valid samples



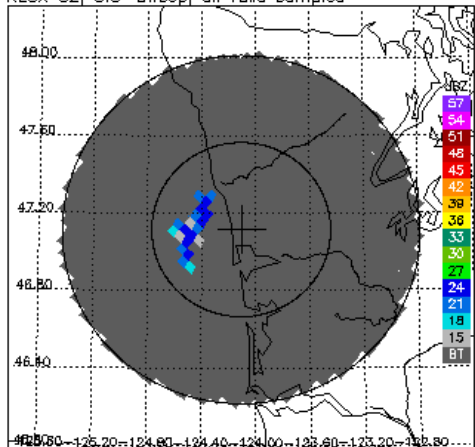
KLGX NW, 0.2° sweep, all valid samples



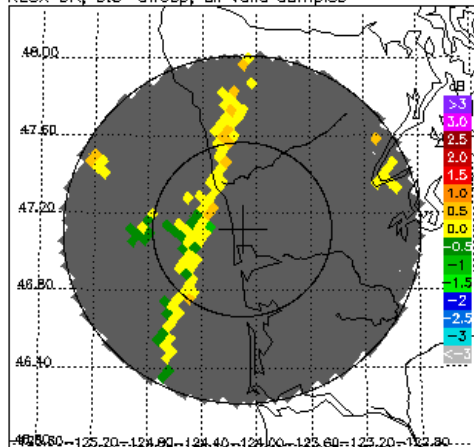
DPR/2ADPR CZ, 0.5° sweep, all valid samples



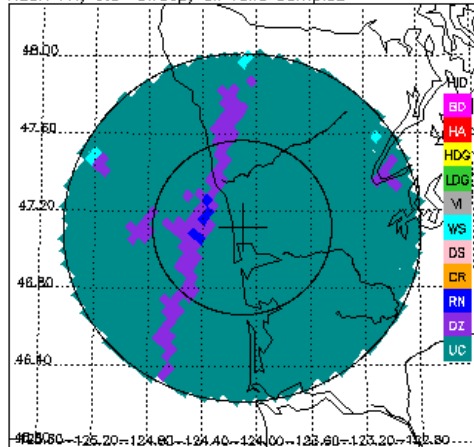
KLGX CZ, 0.5° sweep, all valid samples



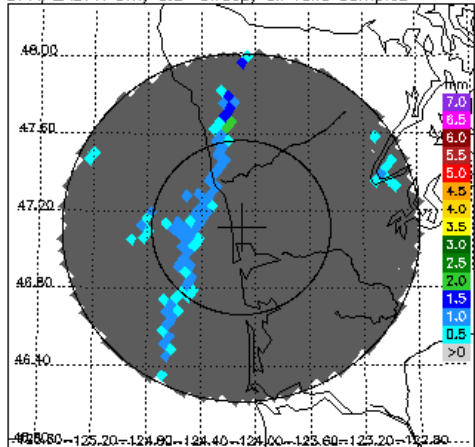
KLGX DR, 0.5° sweep, all valid samples



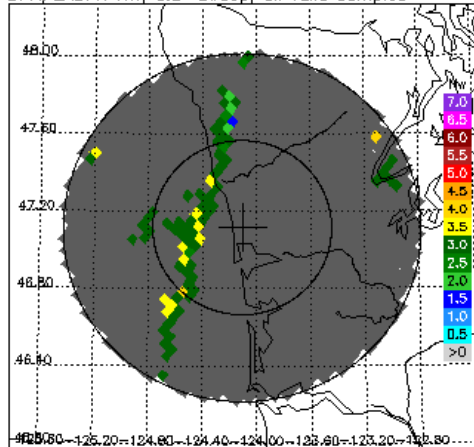
KLGX FH, 0.5° sweep, all valid samples



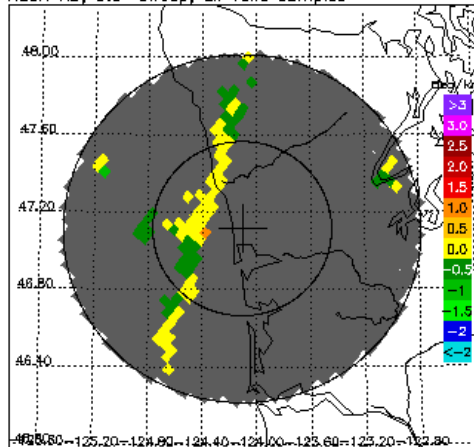
DPR/2ADPR Dm, 0.5° sweep, all valid samples



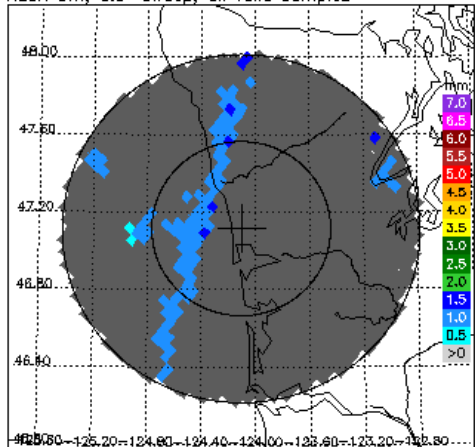
DPR/2ADPR NW, 0.5° sweep, all valid samples



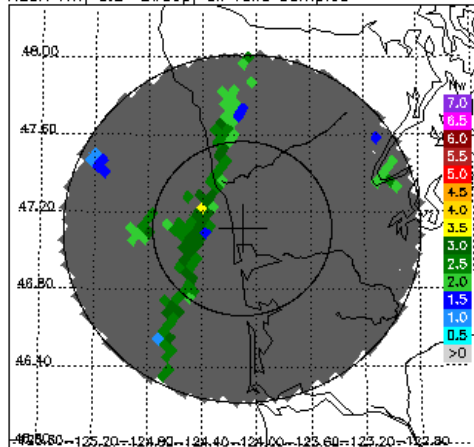
KLGX KD, 0.5° sweep, all valid samples



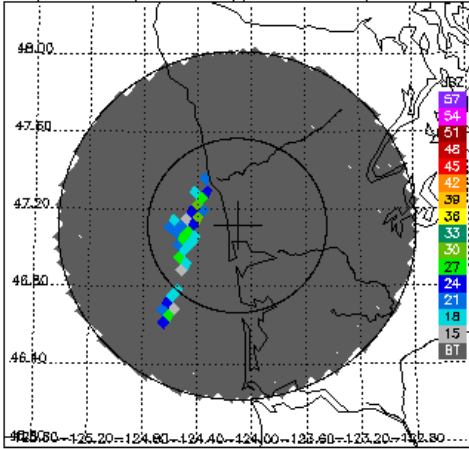
KLGX Dm, 0.5° sweep, all valid samples



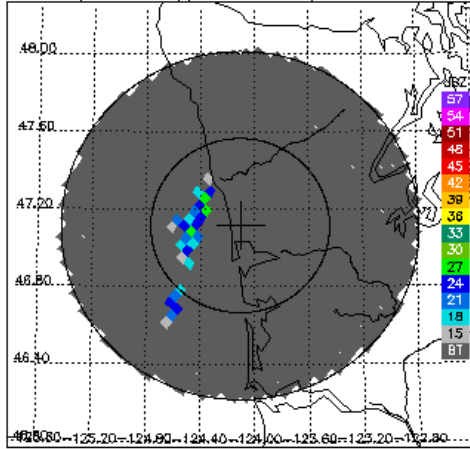
KLGX NW, 0.5° sweep, all valid samples



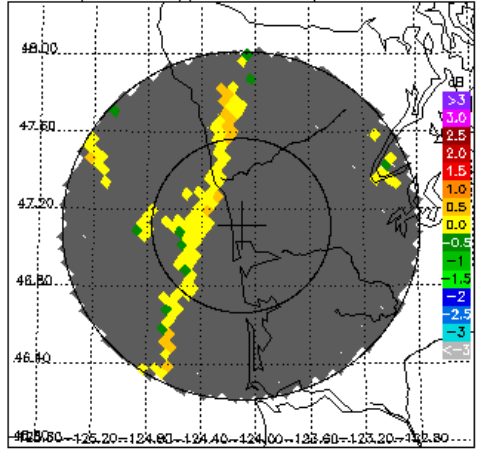
DPR/2ADPR CZ, 1.5° sweep, all valid samples



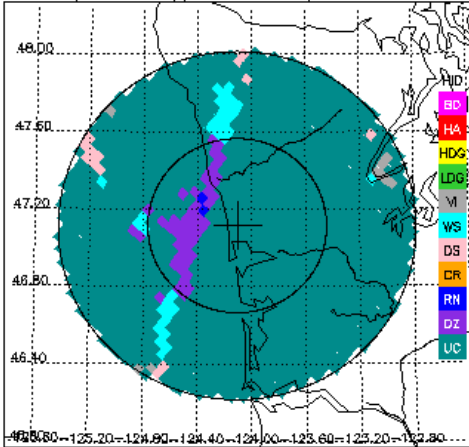
KLGX CZ, 1.5° sweep, all valid samples



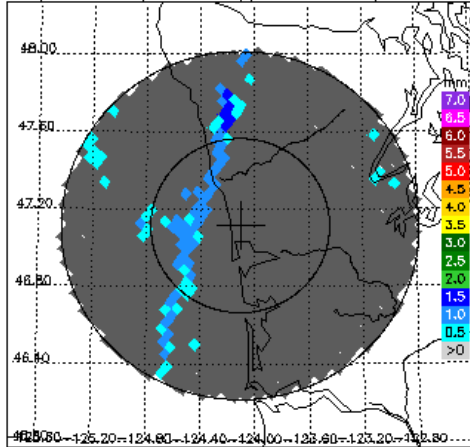
KLGX DR, 1.5° sweep, all valid samples



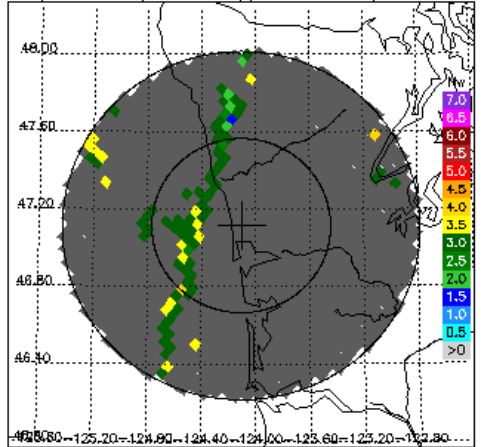
KLGX FH, 1.5° sweep, all valid samples



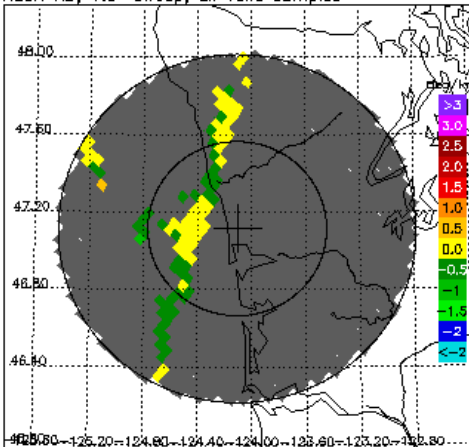
DPR/2ADPR Dm, 1.5° sweep, all valid samples



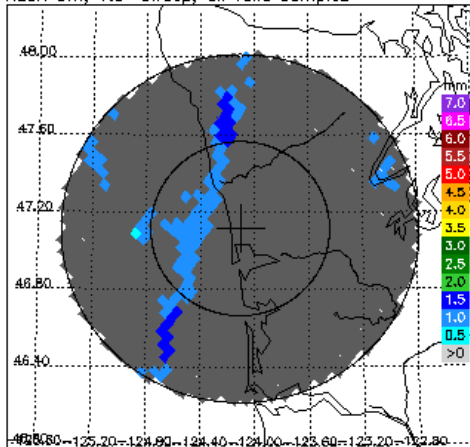
DPR/2ADPR NW, 1.5° sweep, all valid samples



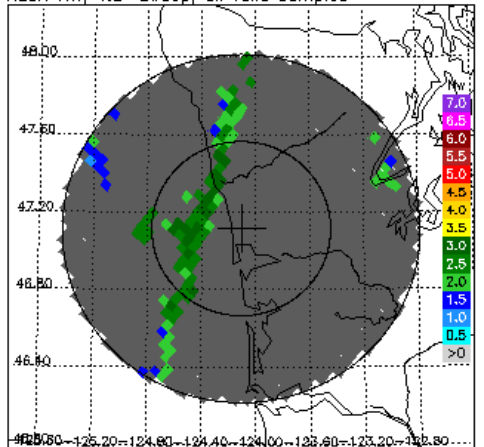
KLGX KD, 1.5° sweep, all valid samples



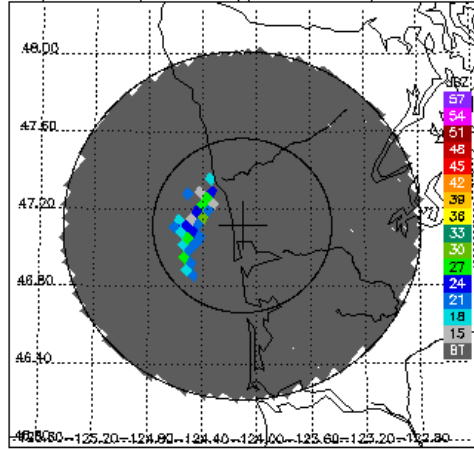
KLGX Dm, 1.5° sweep, all valid samples



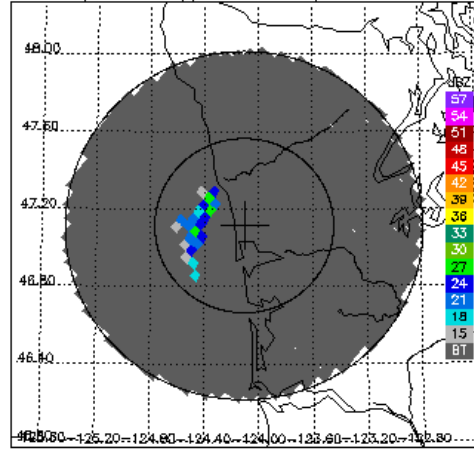
KLGX NW, 1.5° sweep, all valid samples



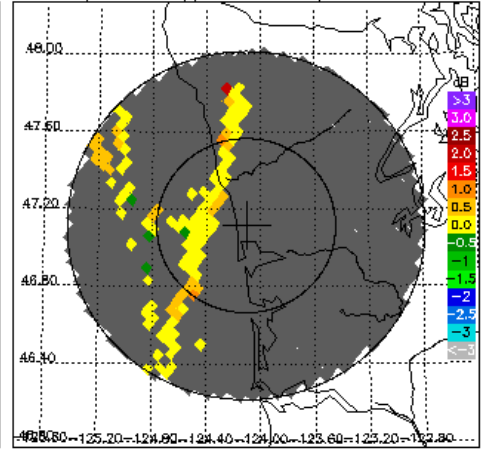
DPR/2ADPR CZ, 2.4° sweep, all valid samples



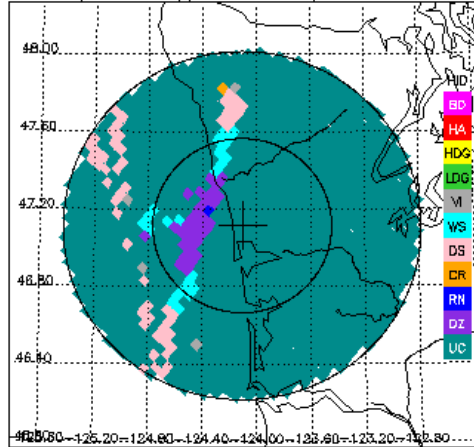
KLGX CZ, 2.4° sweep, all valid samples



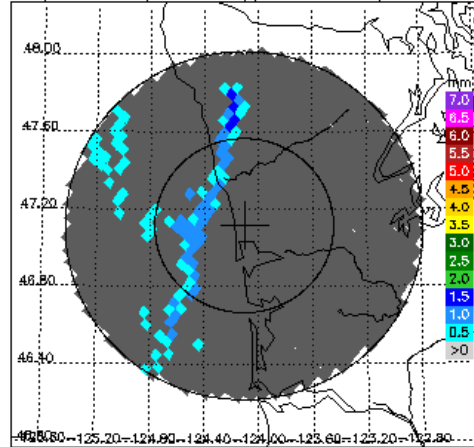
KLGX DR, 2.4° sweep, all valid samples



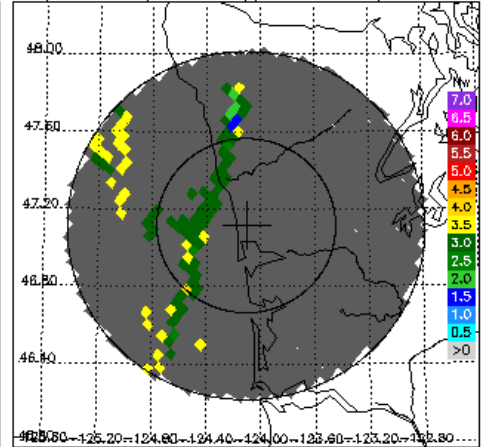
KLGX FH, 2.4° sweep, all valid samples



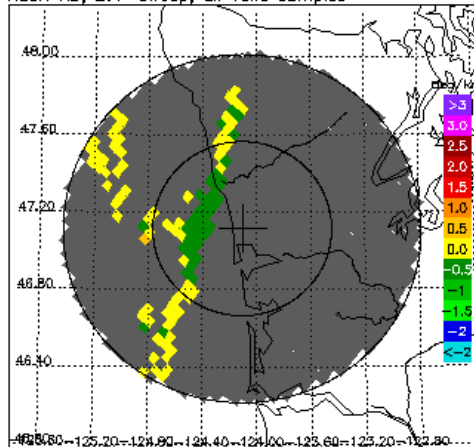
DPR/2ADPR Dm, 2.4° sweep, all valid samples



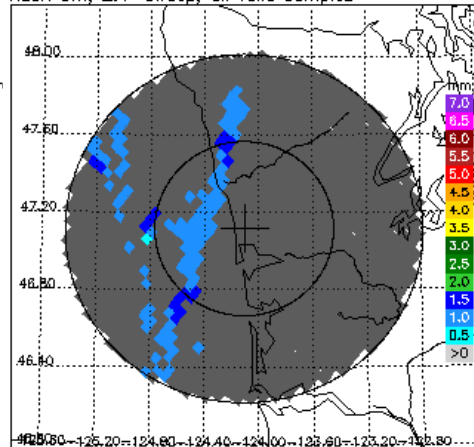
DPR/2ADPR NW, 2.4° sweep, all valid samples



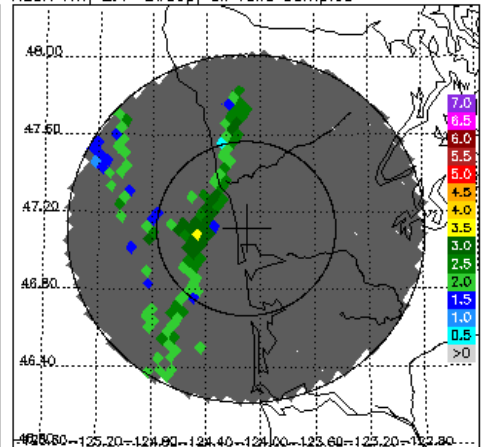
KLGX KD, 2.4° sweep, all valid samples



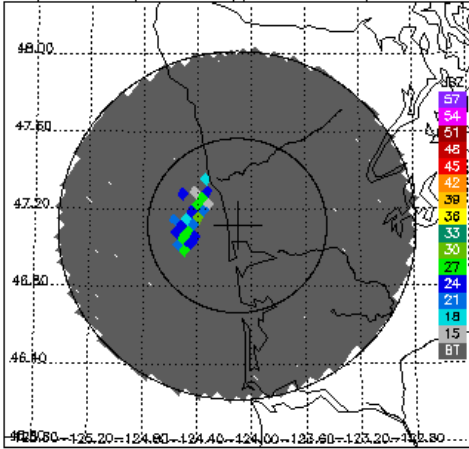
KLGX Dm, 2.4° sweep, all valid samples



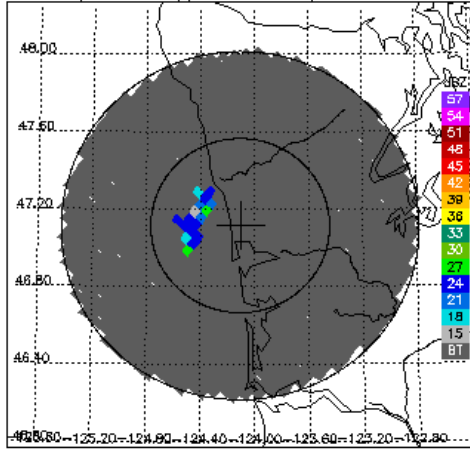
KLGX NW, 2.4° sweep, all valid samples



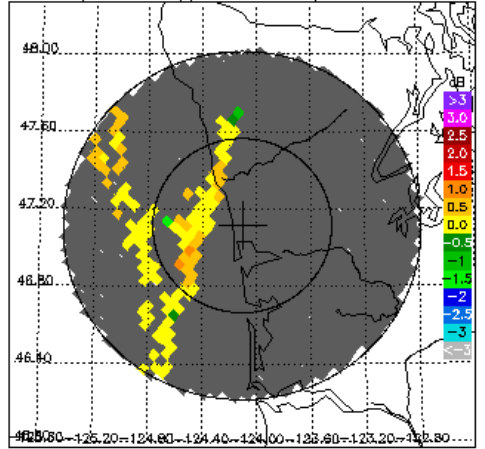
DPR/2ADPR CZ, 3.4° sweep, all valid samples



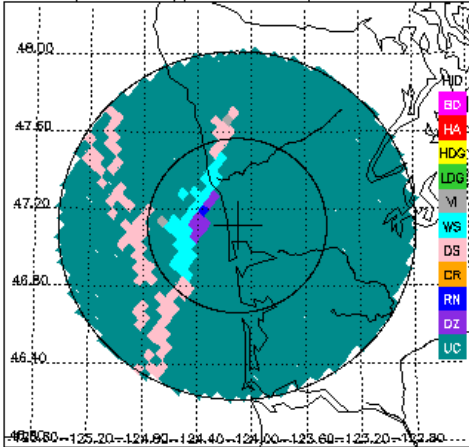
KLGX CZ, 3.4° sweep, all valid samples



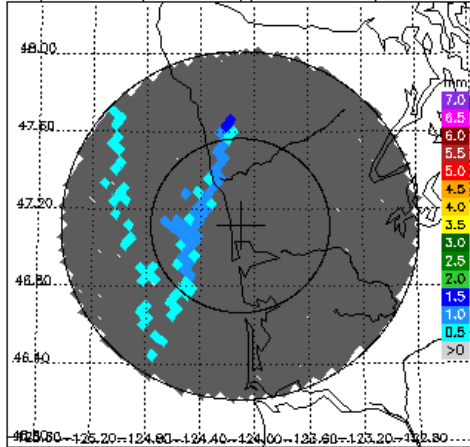
KLGX DR, 3.4° sweep, all valid samples



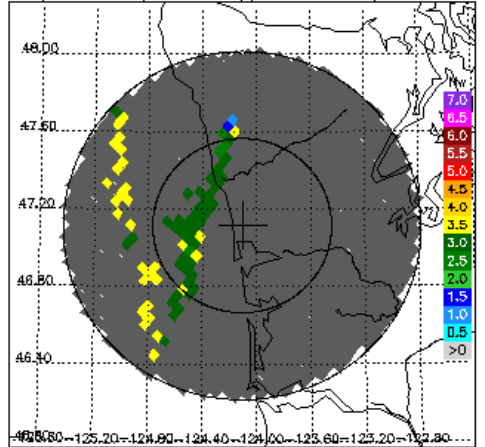
KLGX FH, 3.4° sweep, all valid samples



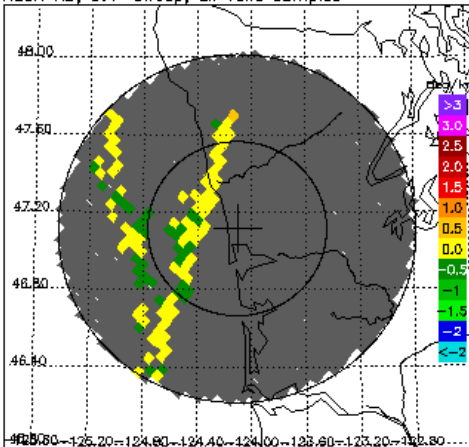
DPR/2ADPR Dm, 3.4° sweep, all valid samples



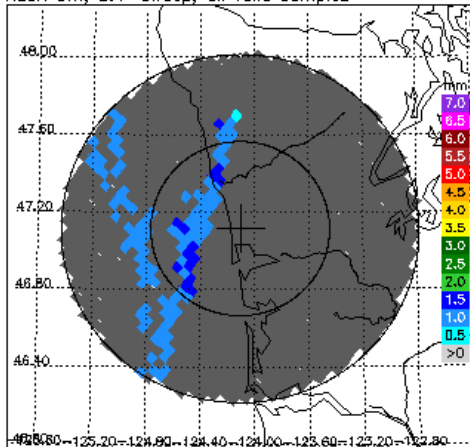
DPR/2ADPR NW, 3.4° sweep, all valid samples



KLGX KD, 3.4° sweep, all valid samples



KLGX Dm, 3.4° sweep, all valid samples



KLGX NW, 3.4° sweep, all valid samples

