

KLGX Ku-adjusted DSD vs. DPR 2ADPR/NS/V04A -- All non-missing pairs

Orbit: 10880 -- GR Start Time: 2016-01-27 23:21:07

DPR 2ADPR-GR Reflectivity difference statistics (dBZ) - GR Site: KLGX
 Orbit: 10880 Version: V04A Swath Type: NS
 DPR time = 2016-01-27 23:22:53 GR start time = 2016-01-27 23:21:07
 Required percent of above-threshold DPR and GR bins in matched volumes >= 0%
 Filtering by GR_blockage Land/Ocean Category criteria.
 GR reflectivity has S-to-Ku frequency adjustments applied.

Mean Reflectivity Statistics grouped by fixed height levels (km):

Vert. Layer	Any Rain Type		Stratiform		Convective		Dataset Statistics		
	DPR-GR	NumPts	DPR-GR	NumPts	DPR-GR	NumPts	AvgDist	DPRMaxZ	GRMaxZ
1.0	-0.647	830	-0.647	812	-0.645	18	65.874	36.933	37.131
2.0	0.136	442	0.134	440	0.576	2	48.889	32.364	32.799 @ BB
3.0	0.476	480	0.476	480	-99.999	0	58.835	34.571	34.893 @ BB
4.0	2.831	261	2.854	260	-1.652	1	60.354	23.996	21.645
5.0	2.927	67	2.927	67	-99.999	0	64.262	21.806	22.450
6.0	5.045	2	5.045	2	-99.999	0	90.038	15.861	11.364

No above-threshold points at height 7.000

No above-threshold points at height 8.000

Mean Reflectivity Statistics grouped by proximity to Bright Band:

Surface type	Any Rain Type		Stratiform		Convective		Dataset Statistics		
	DPR-GR	NumPts	DPR-GR	NumPts	DPR-GR	NumPts	AvgDist	DPRMaxZ	GRMaxZ
Below	-0.988	1131	-0.992	1115	-0.803	16	57.492	36.933	37.131

GR Dm field is being directly compared to DPR Dm.

Mean Drop Diameter (Dm, in mm) Statistics grouped by fixed height levels (km):

Vert. Layer	Any Rain Type		Stratiform		Convective		Dataset Statistics		
	DPR-GR	NumPts	DPR-GR	NumPts	DPR-GR	NumPts	AvgDist	DPRMaxDm	GRMaxDm
1.0	0.037	783	0.046	767	-0.302	16	64.122	1.696	1.744
2.0	0.031	13	0.031	13	-99.999	0	21.075	1.350	1.409 @ BB

No above-threshold points at height 3.000

No above-threshold points at height 4.000

No above-threshold points at height 5.000

No above-threshold points at height 6.000

No above-threshold points at height 7.000

No above-threshold points at height 8.000

Mean Drop Diameter (Dm, in mm) Statistics grouped by proximity to Bright Band:

Surface type	Any Rain Type		Stratiform		Convective		Dataset Statistics		
	DPR-GR	NumPts	DPR-GR	NumPts	DPR-GR	NumPts	AvgDist	DPRMaxDm	GRMaxDm
Below	0.036	1131	0.043	1115	-0.302	16	57.492	1.696	2.125

GR NW field is being directly compared to DPR Nw.

Mean Normalized Intercept Parameter (log10(Nw)) Statistics grouped by fixed height levels (km):

Vert. Layer	Any Rain Type		Stratiform		Convective		Dataset Statistics		
	DPR-GR	NumPts	DPR-GR	NumPts	DPR-GR	NumPts	AvgDist	DPRMaxNw	GRMaxNw
1.0	-0.188	783	-0.214	767	0.791	16	64.122	4.388	4.519
2.0	-0.139	13	-0.139	13	-99.999	0	21.075	3.608	3.945 @ BB

No above-threshold points at height 3.000

No above-threshold points at height 4.000

No above-threshold points at height 5.000

No above-threshold points at height 6.000

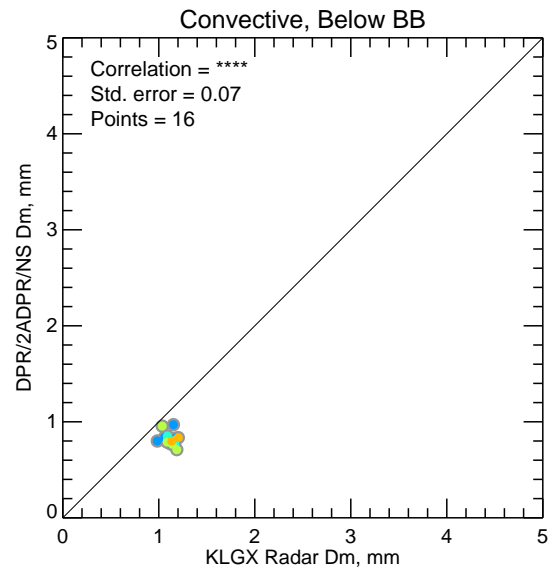
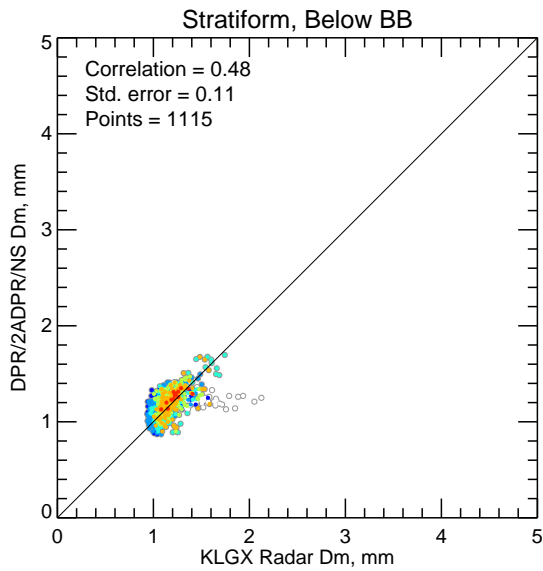
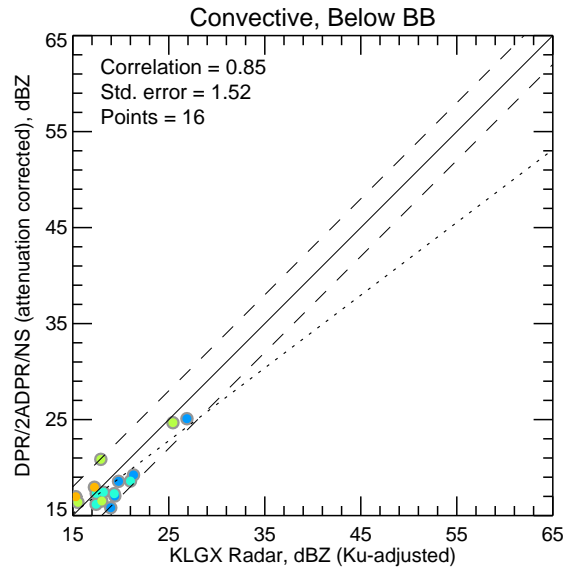
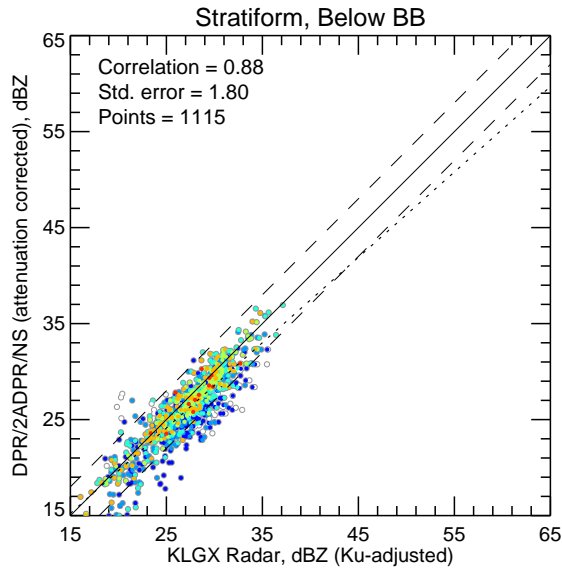
No above-threshold points at height 7.000

No above-threshold points at height 8.000

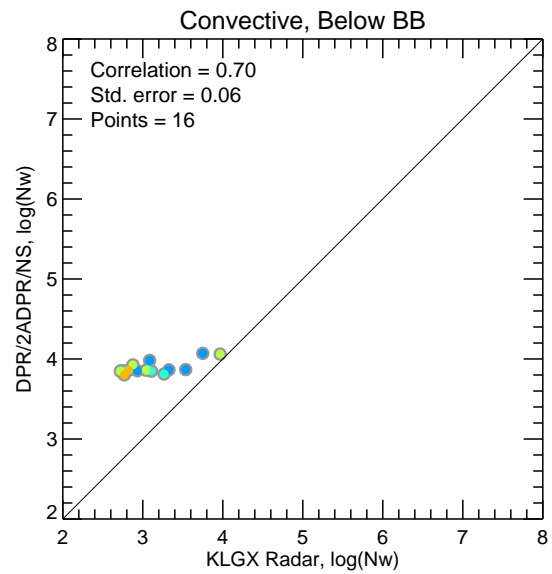
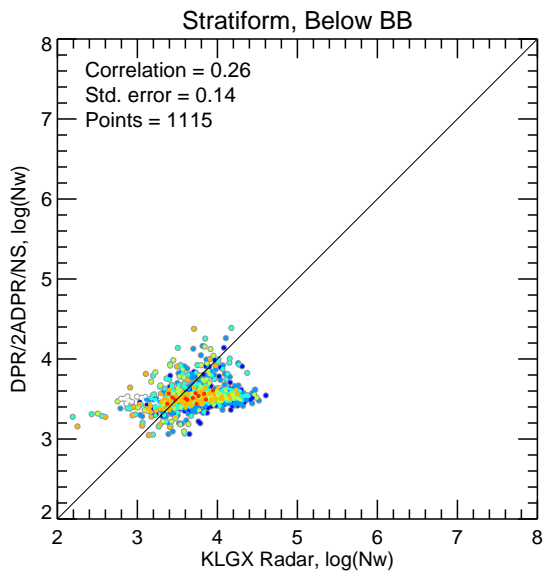
Mean Normalized Intercept Parameter (log10(Nw)) Statistics grouped by proximity to Bright Band:

Surface type	Any Rain Type		Stratiform		Convective		Dataset Statistics		
	DPR-GR	NumPts	DPR-GR	NumPts	DPR-GR	NumPts	AvgDist	DPRMaxNw	GRMaxNw
Below	-0.224	1131	-0.245	1115	0.791	16	57.492	4.388	4.606

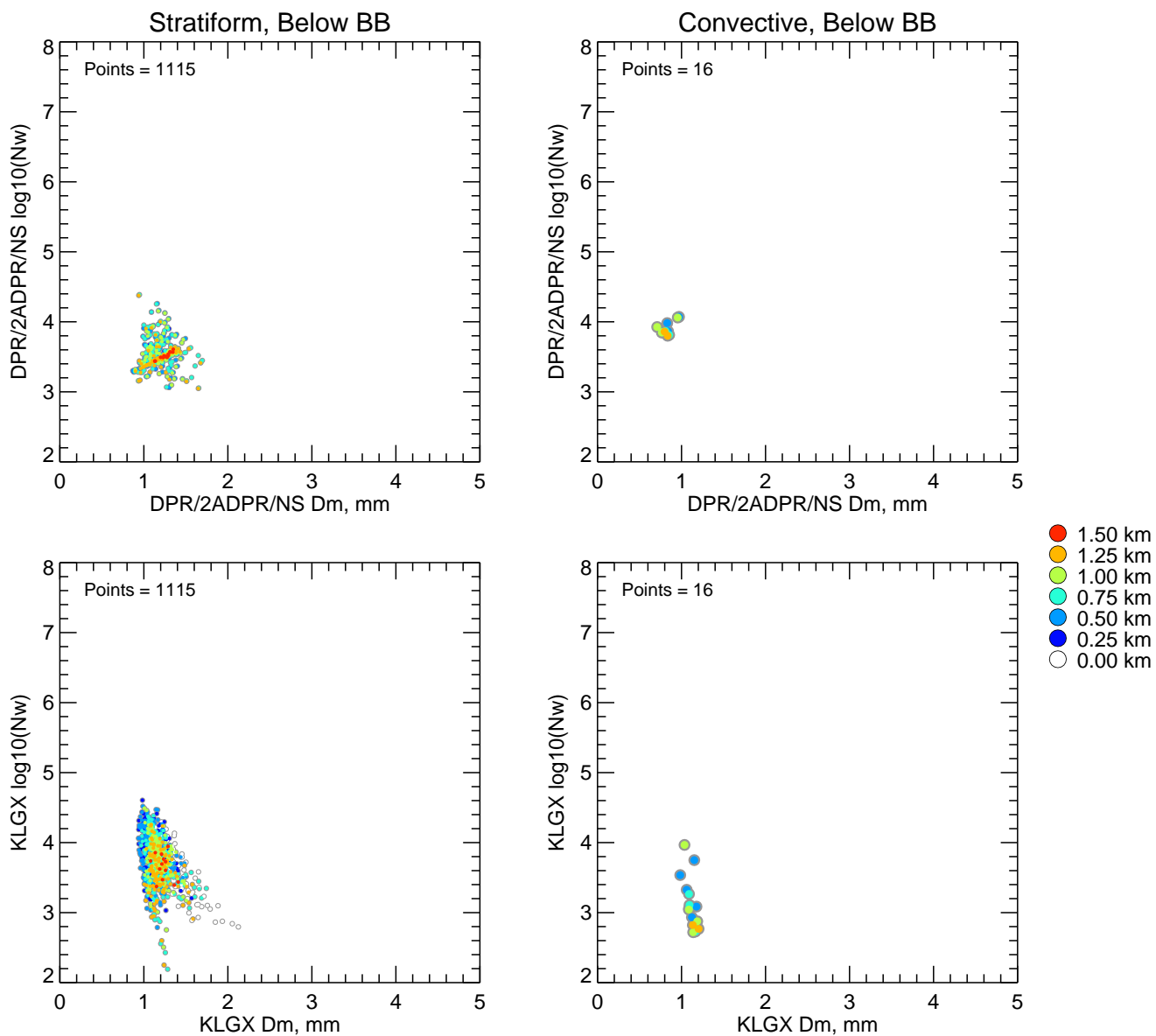
KLGX Ku-adjusted DSD vs. DPR 2ADPR/NS/V04A -- All non-missing pairs



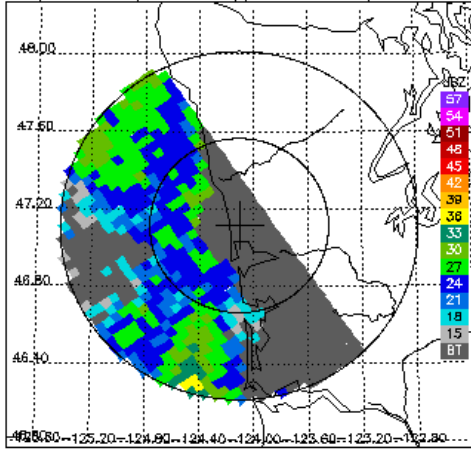
- 1.50 km
- 1.25 km
- 1.00 km
- 0.75 km
- 0.50 km
- 0.25 km
- 0.00 km



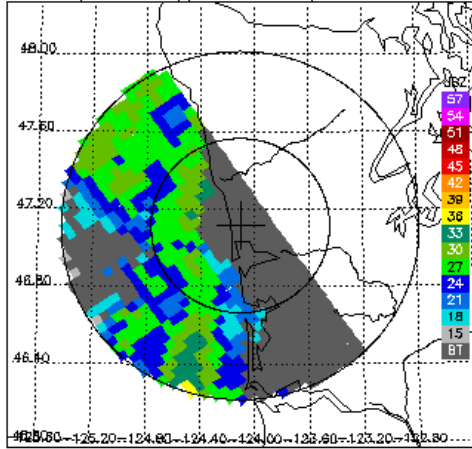
Dm vs. $\log_{10}(N_w)$ for DPR 2ADPR/NS/V04A and KLGX -- All non-missing pairs



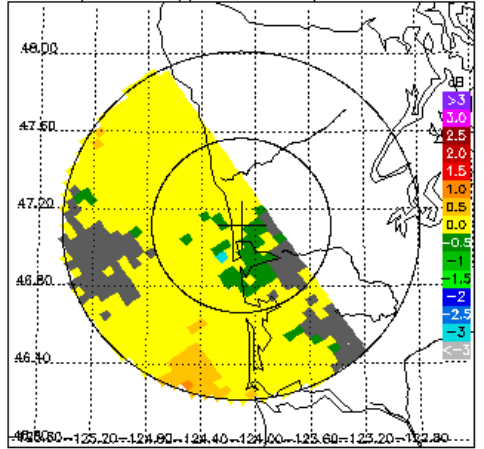
DPR/2ADPR CZ, 0.2° sweep, all valid samples



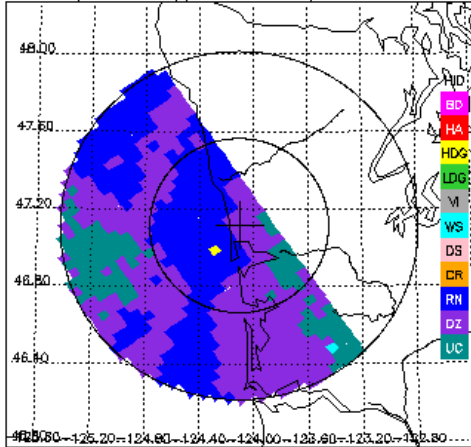
KLGX CZ, 0.2° sweep, all valid samples



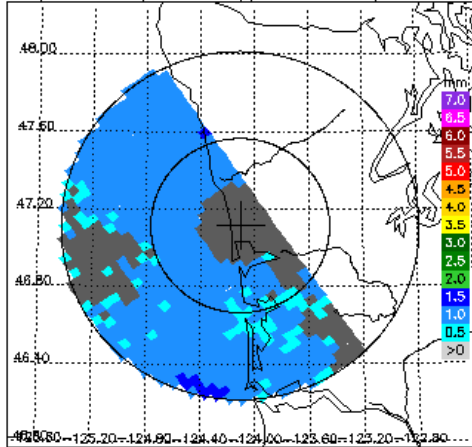
KLGX DR, 0.2° sweep, all valid samples



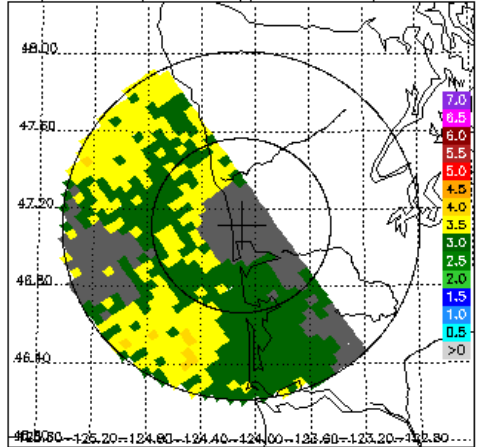
KLGX FH, 0.2° sweep, all valid samples



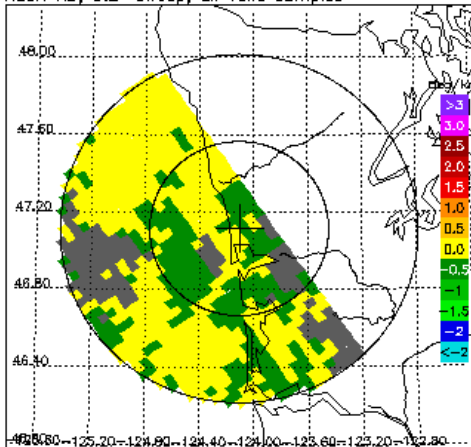
DPR/2ADPR Dm, 0.2° sweep, all valid samples



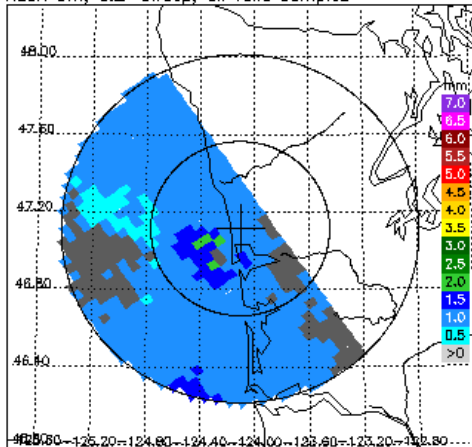
DPR/2ADPR NW, 0.2° sweep, all valid samples



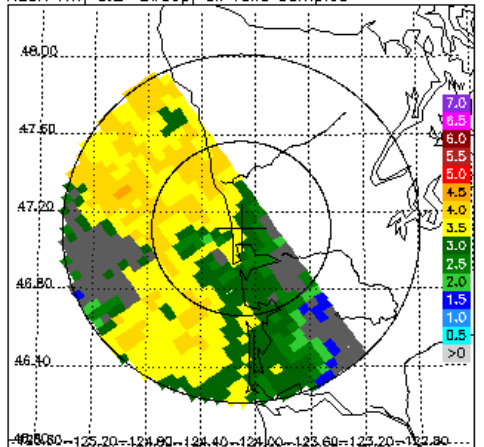
KLGX KD, 0.2° sweep, all valid samples



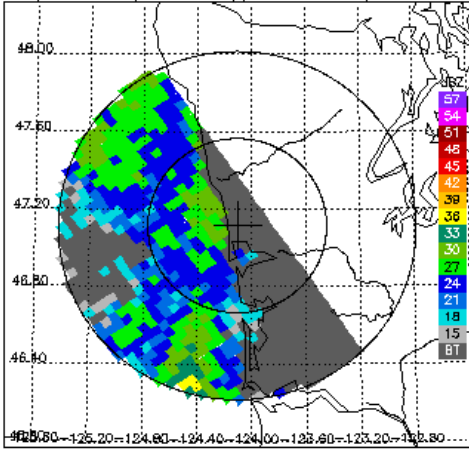
KLGX Dm, 0.2° sweep, all valid samples



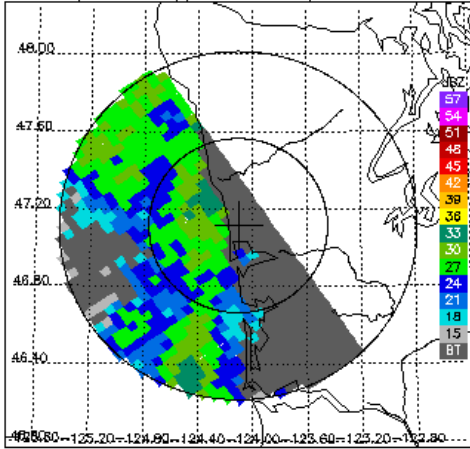
KLGX NW, 0.2° sweep, all valid samples



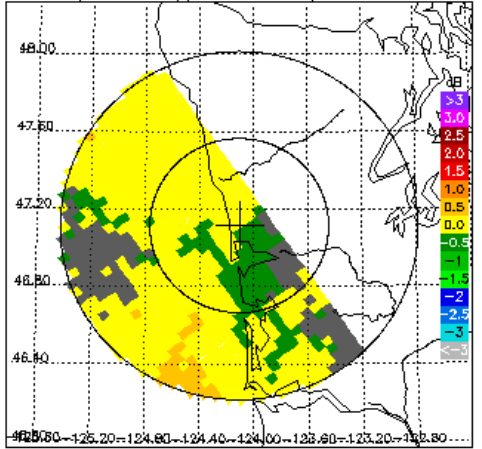
DPR/2ADPR CZ, 0.5° sweep, all valid samples



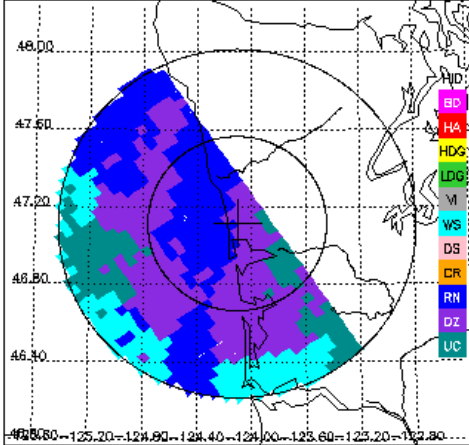
KLGX CZ, 0.5° sweep, all valid samples



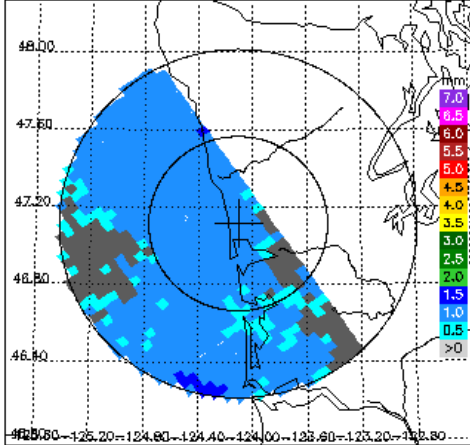
KLGX DR, 0.5° sweep, all valid samples



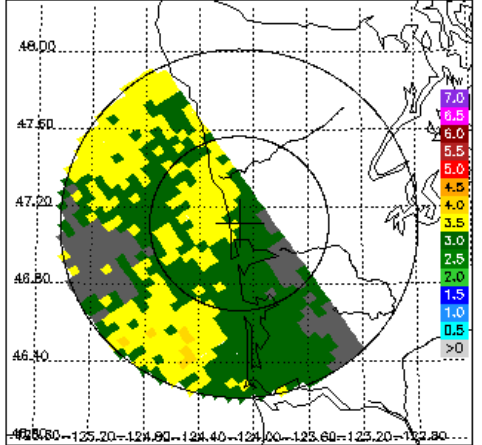
KLGX FH, 0.5° sweep, all valid samples



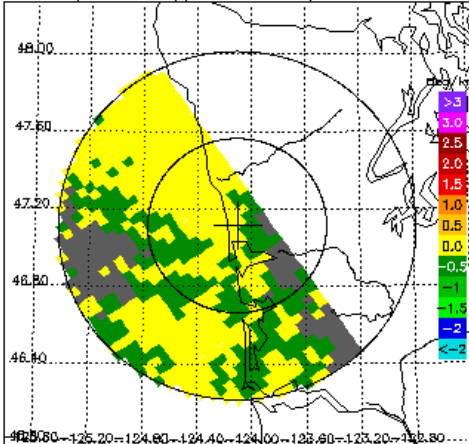
DPR/2ADPR Dm, 0.5° sweep, all valid samples



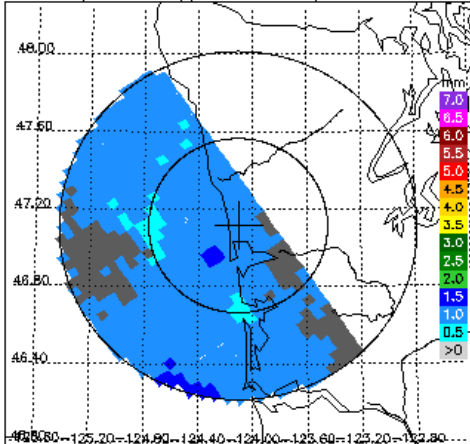
DPR/2ADPR NW, 0.5° sweep, all valid samples



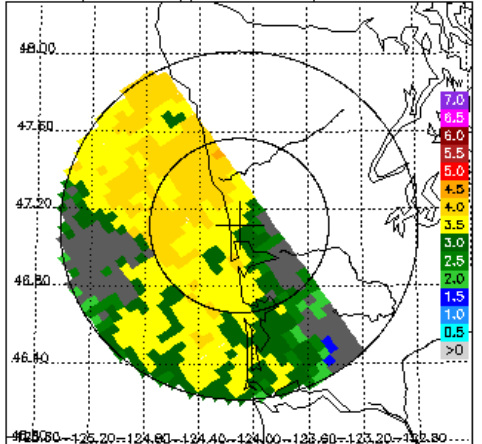
KLGX KD, 0.5° sweep, all valid samples



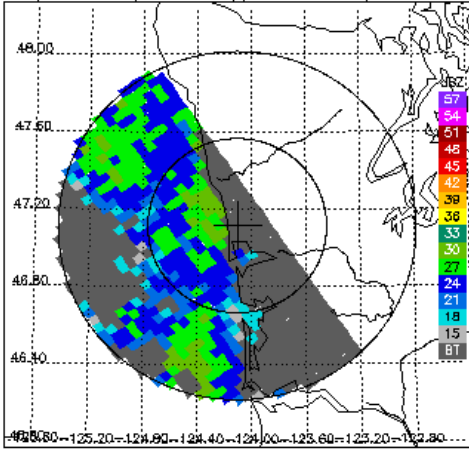
KLGX Dm, 0.5° sweep, all valid samples



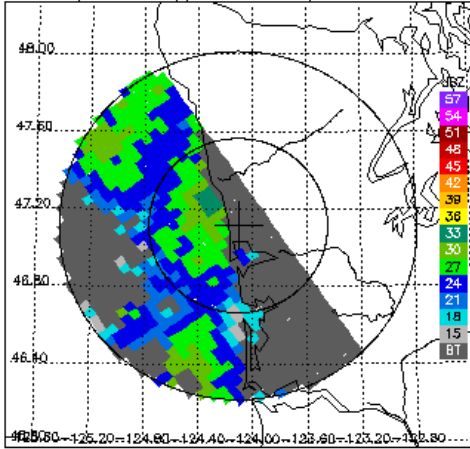
KLGX NW, 0.5° sweep, all valid samples



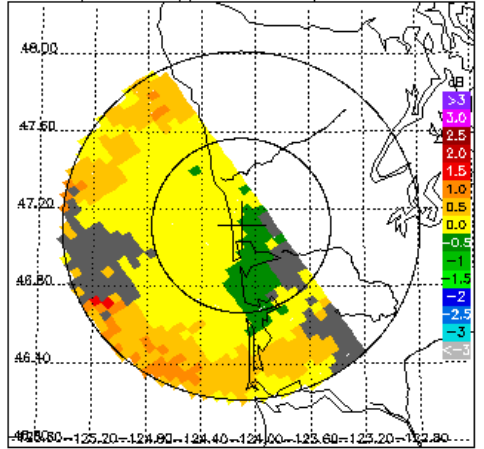
DPR/2ADPR CZ, 1.5° sweep, all valid samples



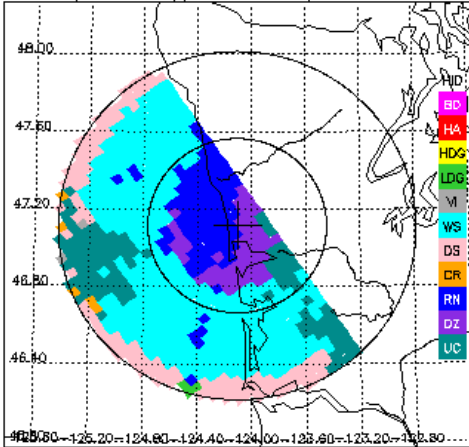
KLGX CZ, 1.5° sweep, all valid samples



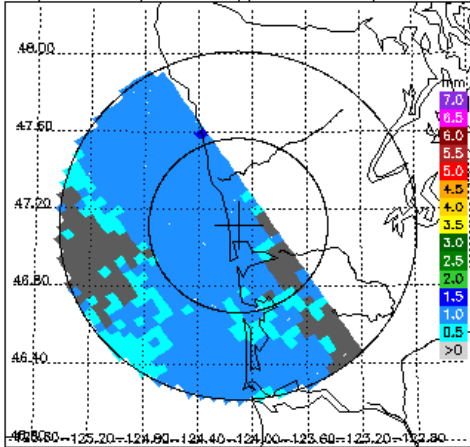
KLGX DR, 1.5° sweep, all valid samples



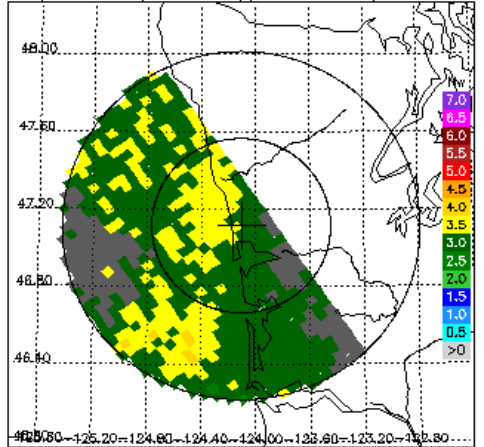
KLGX FH, 1.5° sweep, all valid samples



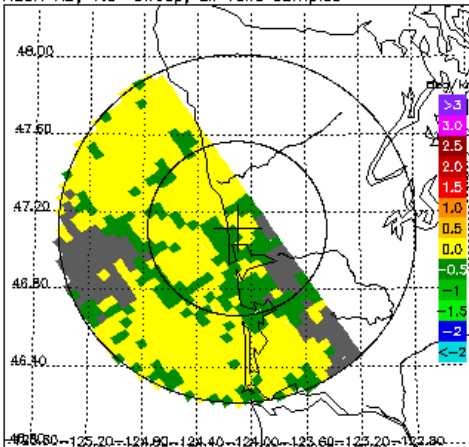
DPR/2ADPR Dm, 1.5° sweep, all valid samples



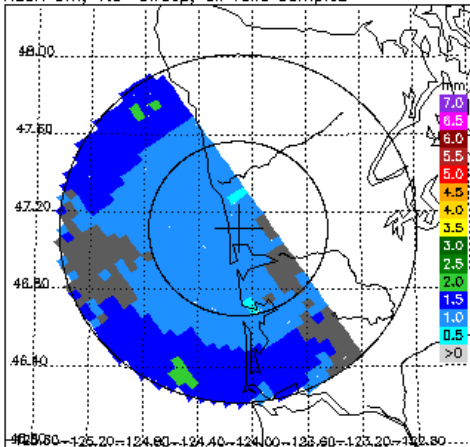
DPR/2ADPR NW, 1.5° sweep, all valid samples



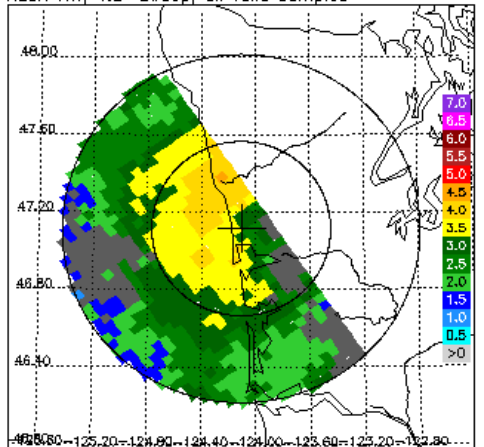
KLGX KD, 1.5° sweep, all valid samples



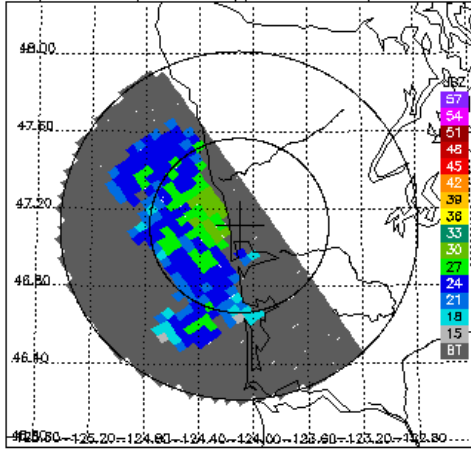
KLGX Dm, 1.5° sweep, all valid samples



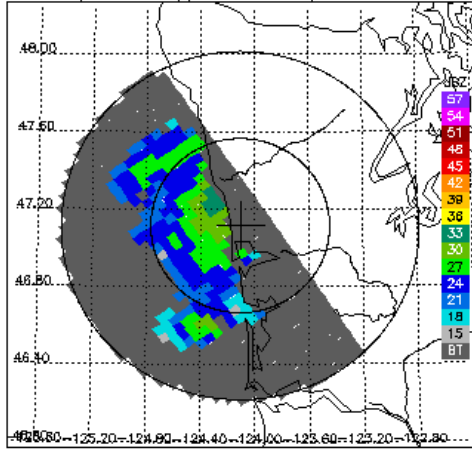
KLGX NW, 1.5° sweep, all valid samples



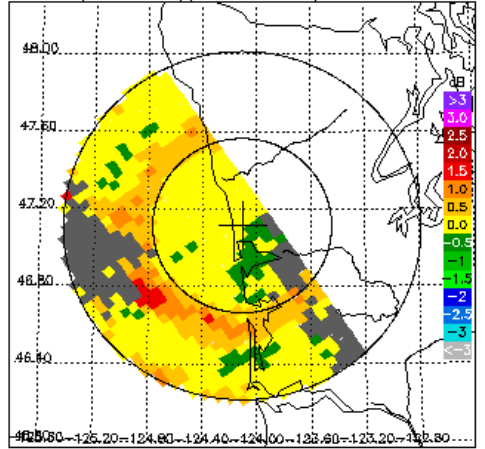
DPR/2ADPR CZ, 2.4° sweep, all valid samples



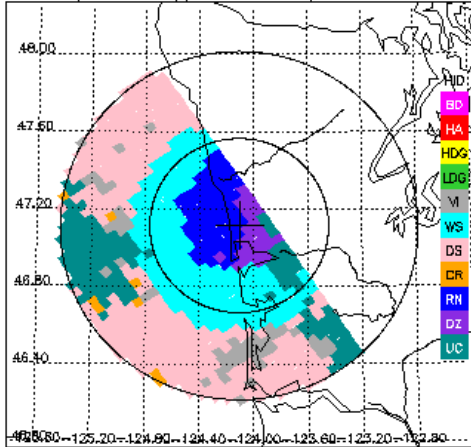
KLGX CZ, 2.4° sweep, all valid samples



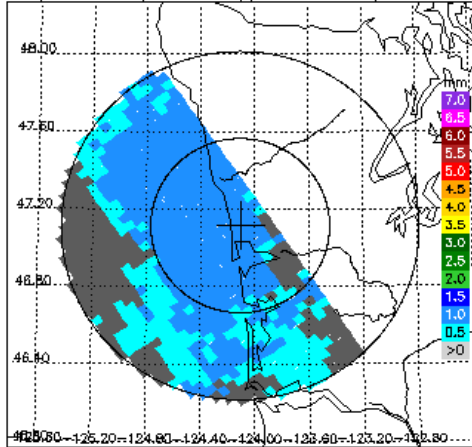
KLGX DR, 2.4° sweep, all valid samples



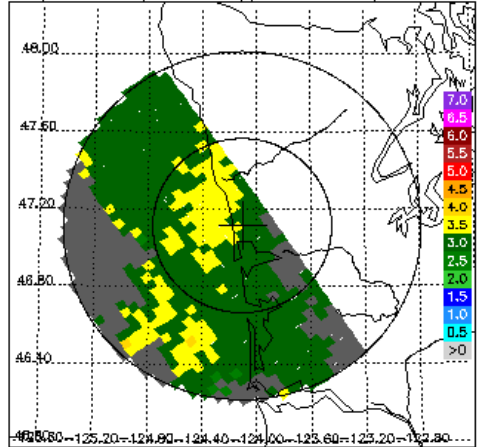
KLGX FH, 2.4° sweep, all valid samples



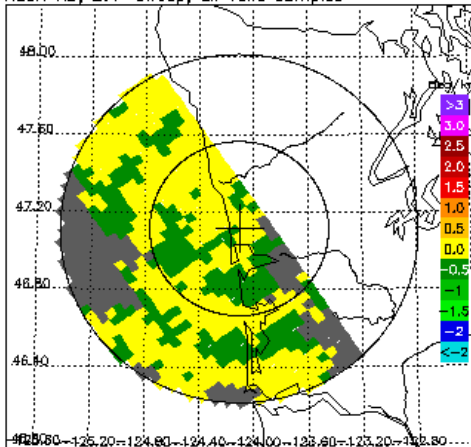
DPR/2ADPR Dm, 2.4° sweep, all valid samples



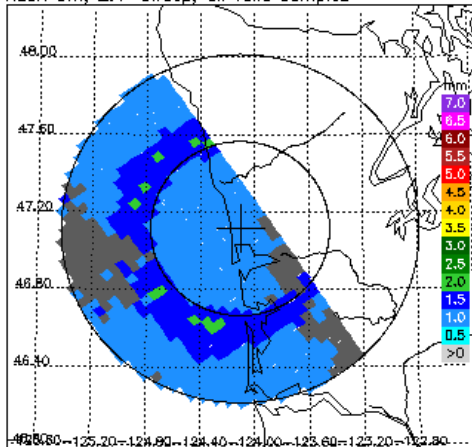
DPR/2ADPR NW, 2.4° sweep, all valid samples



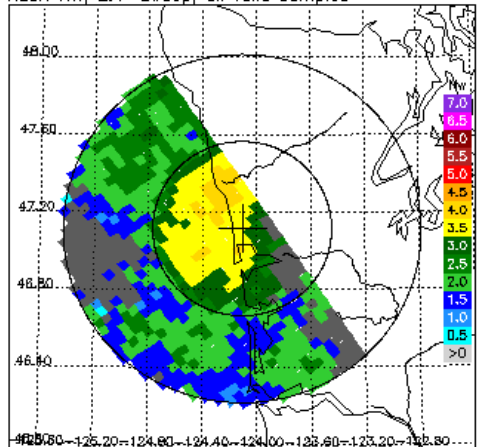
KLGX KD, 2.4° sweep, all valid samples



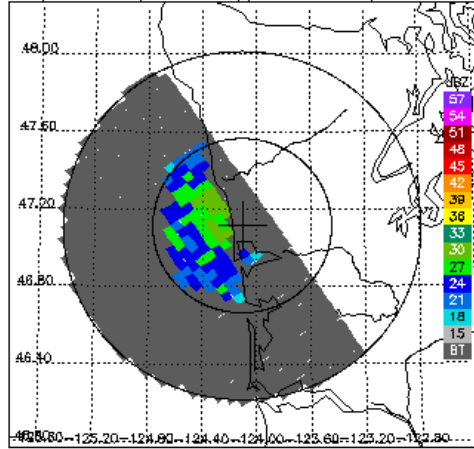
KLGX Dm, 2.4° sweep, all valid samples



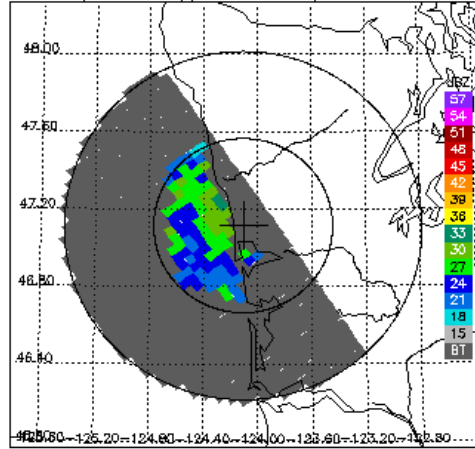
KLGX NW, 2.4° sweep, all valid samples



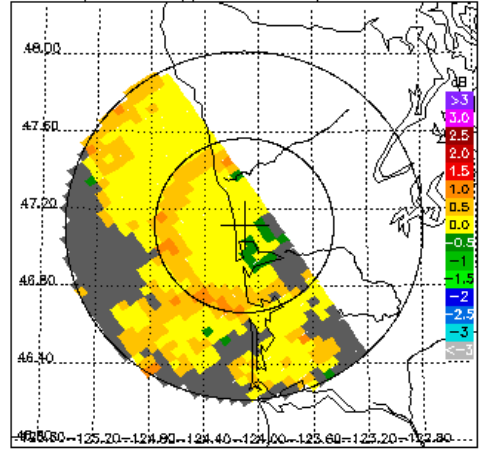
DPR/2ADPR CZ, 3.4° sweep, all valid samples



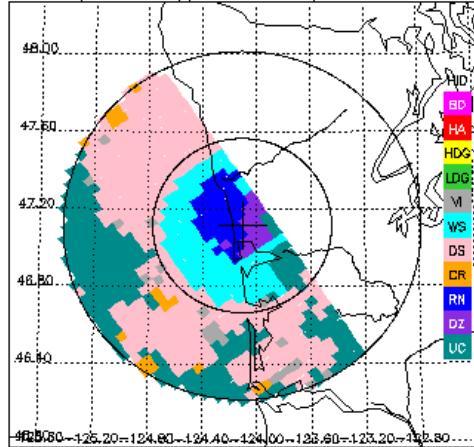
KLGX CZ, 3.4° sweep, all valid samples



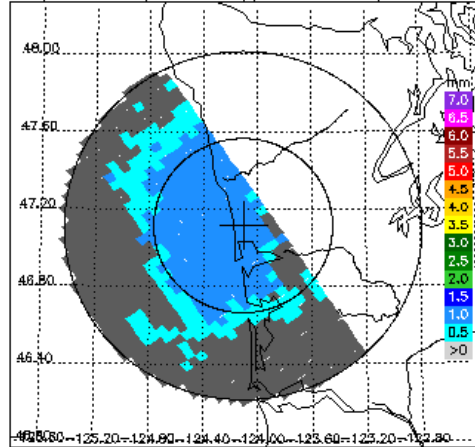
KLGX DR, 3.4° sweep, all valid samples



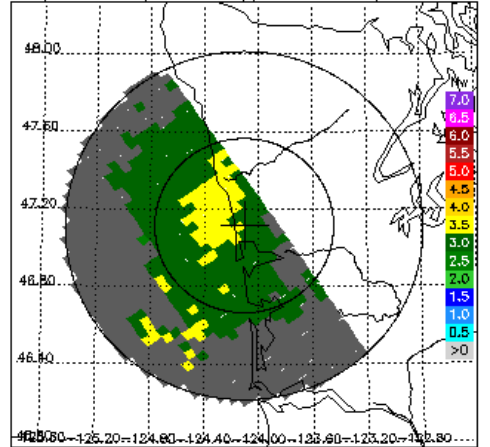
KLGX FH, 3.4° sweep, all valid samples



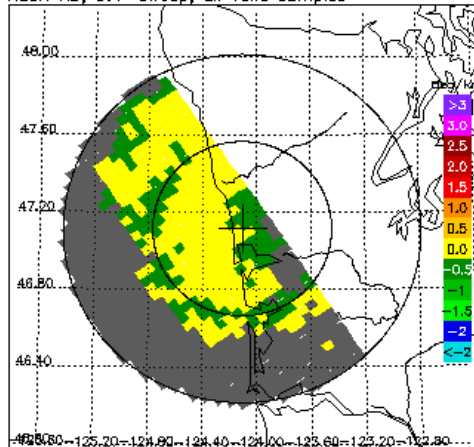
DPR/2ADPR Dm, 3.4° sweep, all valid samples



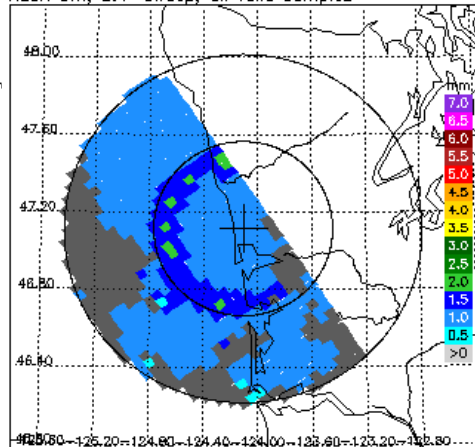
DPR/2ADPR NW, 3.4° sweep, all valid samples



KLGX KD, 3.4° sweep, all valid samples



KLGX Dm, 3.4° sweep, all valid samples



KLGX NW, 3.4° sweep, all valid samples

