

NPOL_WA Ku-adjusted DSD vs. DPR 2ADPR/NS/V04A -- All non-missing pairs

Orbit: 10142 -- GR Start Time: 2015-12-11 13:18:48

DPR 2ADPR-GR Reflectivity difference statistics (dBZ) - GR Site: NPOL_WA

Orbit: 10142 Version: V04A Swath Type: NS

DPR time = 2015-12-11 13:10:54 GR start time = 2015-12-11 13:18:48

Required percent of above-threshold DPR and GR bins in matched volumes >= 0%

Filtering by Land/Ocean Category criteria.

GR reflectivity has S-to-Ku frequency adjustments applied.

Mean Reflectivity Statistics grouped by fixed height levels (km):

| Vert. Layer | Any Rain Type | | Stratiform | | Convective | | Dataset Statistics | | |
|-------------|---------------|--------|------------|--------|------------|--------|--------------------|---------|-------------|
| | DPR-GR | NumPts | DPR-GR | NumPts | DPR-GR | NumPts | AvgDist | DPRMaxZ | GRMaxZ |
| 1.0 | -5.410 | 425 | -5.964 | 286 | -4.454 | 110 | 68.380 | 39.332 | 44.176 @ BB |
| 2.0 | -2.479 | 247 | -2.402 | 128 | -2.018 | 62 | 59.875 | 29.919 | 33.760 @ BB |
| 3.0 | -0.672 | 254 | -0.269 | 136 | -0.902 | 83 | 78.541 | 28.489 | 31.700 |
| 4.0 | 2.052 | 70 | 2.172 | 45 | 2.227 | 21 | 81.243 | 22.078 | 24.368 |
| 5.0 | 2.360 | 5 | 1.996 | 3 | 2.923 | 2 | 94.500 | 17.268 | 17.081 |

Mean Reflectivity Statistics grouped by proximity to Bright Band:

| Surface type | Any Rain Type | | Stratiform | | Convective | | Dataset Statistics | | |
|--------------|---------------|--------|------------|--------|------------|--------|--------------------|---------|--------|
| | DPR-GR | NumPts | DPR-GR | NumPts | DPR-GR | NumPts | AvgDist | DPRMaxZ | GRMaxZ |
| Below | 0.920 | 36 | 1.859 | 28 | -99.999 | 0 | 21.882 | 34.940 | 31.864 |

GR Dm field is being directly compared to DPR Dm.

Mean Drop Diameter (Dm, in mm) Statistics grouped by fixed height levels (km):

| Vert. Layer | Any Rain Type | | Stratiform | | Convective | | Dataset Statistics | | |
|-------------|---------------|--------|------------|--------|------------|--------|--------------------|----------|------------|
| | DPR-GR | NumPts | DPR-GR | NumPts | DPR-GR | NumPts | AvgDist | DPRMaxDm | GRMaxDm |
| 1.0 | 0.142 | 1 | 0.142 | 1 | -99.999 | 0 | 11.536 | 0.980 | 0.838 @ BB |

No above-threshold points at height 2.000

No above-threshold points at height 3.000

No above-threshold points at height 4.000

No above-threshold points at height 5.000

Mean Drop Diameter (Dm, in mm) Statistics grouped by proximity to Bright Band:

| Surface type | Any Rain Type | | Stratiform | | Convective | | Dataset Statistics | | |
|--------------|---------------|--------|------------|--------|------------|--------|--------------------|----------|---------|
| | DPR-GR | NumPts | DPR-GR | NumPts | DPR-GR | NumPts | AvgDist | DPRMaxDm | GRMaxDm |
| Below | -0.055 | 50 | 0.045 | 36 | -99.999 | 0 | 20.810 | 2.170 | 1.511 |

GR NW field is being directly compared to DPR Nw.

Mean Normalized Intercept Parameter (log10(Nw)) Statistics grouped by fixed height levels (km):

| Vert. Layer | Any Rain Type | | Stratiform | | Convective | | Dataset Statistics | | |
|-------------|---------------|--------|------------|--------|------------|--------|--------------------|----------|------------|
| | DPR-GR | NumPts | DPR-GR | NumPts | DPR-GR | NumPts | AvgDist | DPRMaxNw | GRMaxNw |
| 1.0 | 0.237 | 1 | 0.237 | 1 | -99.999 | 0 | 11.536 | 3.271 | 3.034 @ BB |

No above-threshold points at height 2.000

No above-threshold points at height 3.000

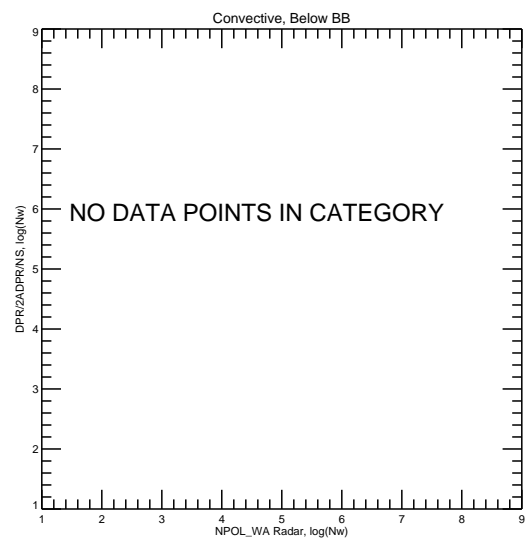
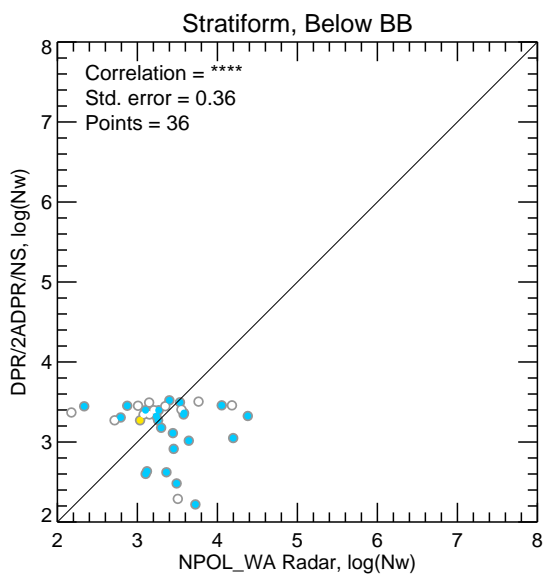
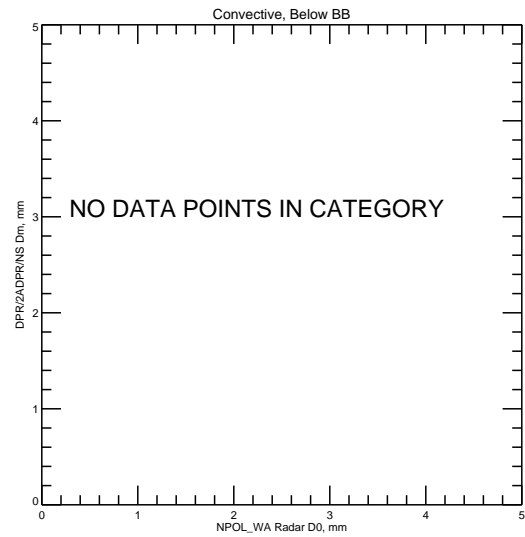
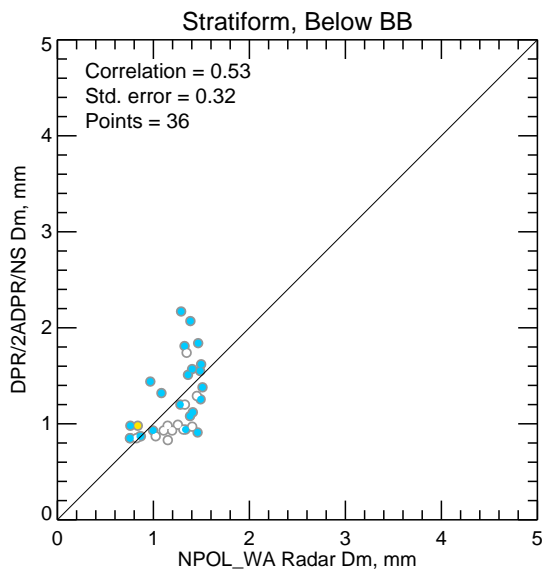
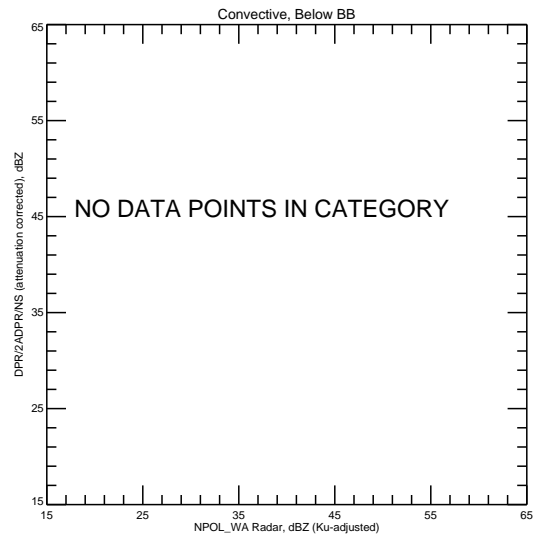
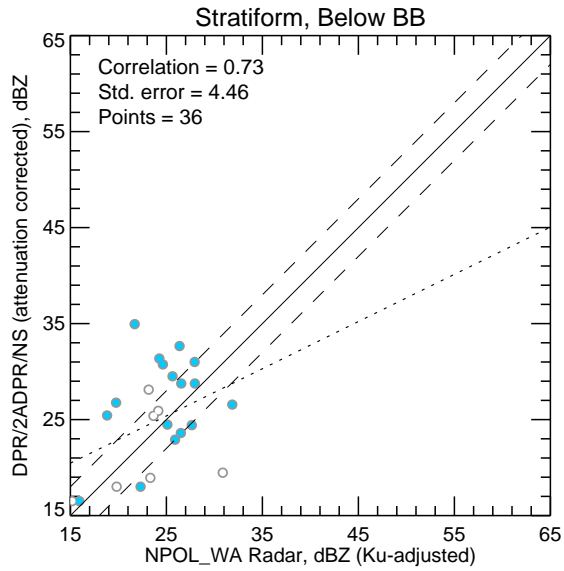
No above-threshold points at height 4.000

No above-threshold points at height 5.000

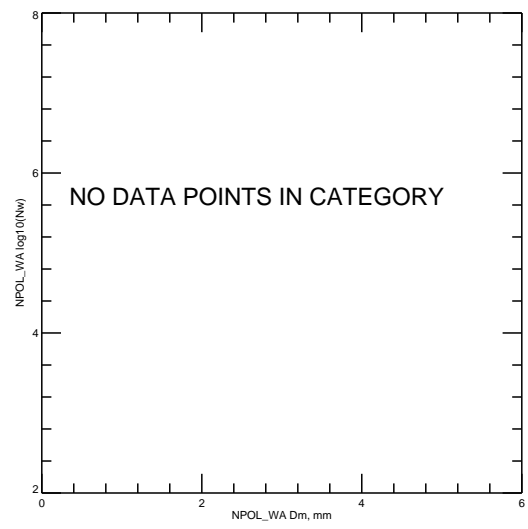
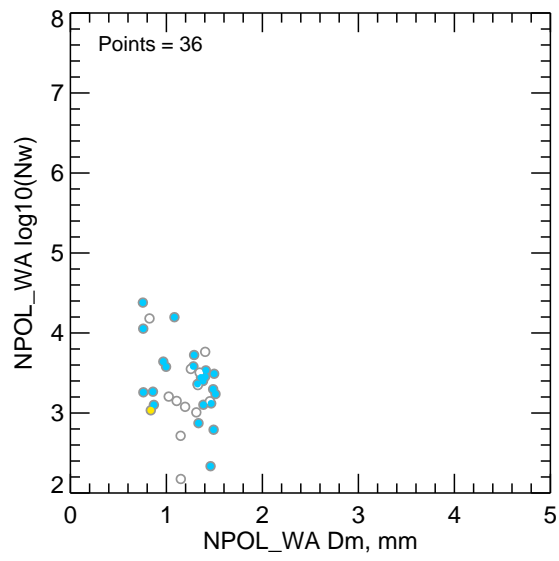
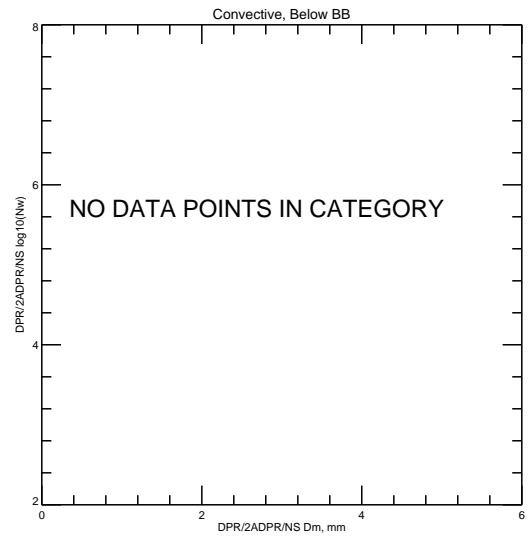
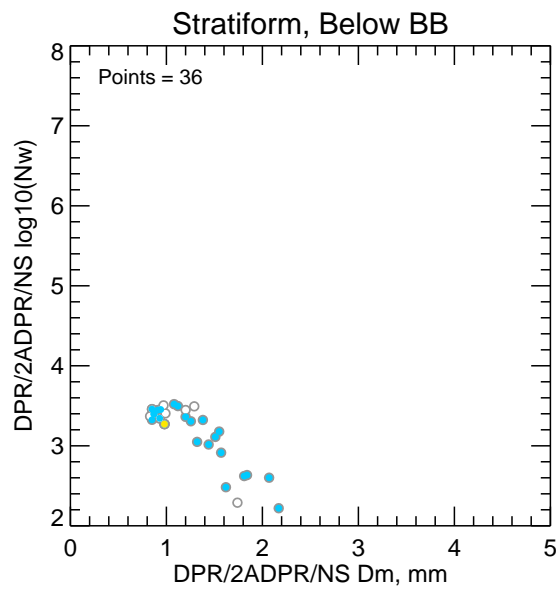
Mean Normalized Intercept Parameter (log10(Nw)) Statistics grouped by proximity to Bright Band:

| Surface type | Any Rain Type | | Stratiform | | Convective | | Dataset Statistics | | |
|--------------|---------------|--------|------------|--------|------------|--------|--------------------|----------|---------|
| | DPR-GR | NumPts | DPR-GR | NumPts | DPR-GR | NumPts | AvgDist | DPRMaxNw | GRMaxNw |
| Below | 0.026 | 50 | -0.223 | 36 | -99.999 | 0 | 20.810 | 3.959 | 4.380 |

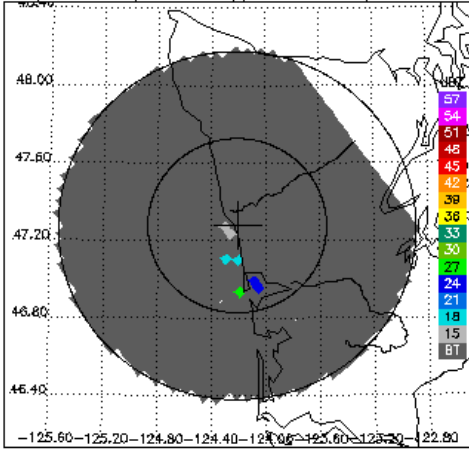
NPOL_WA Ku-adjusted DSD vs. DPR 2ADPR/NS/V04A -- All non-missing pairs



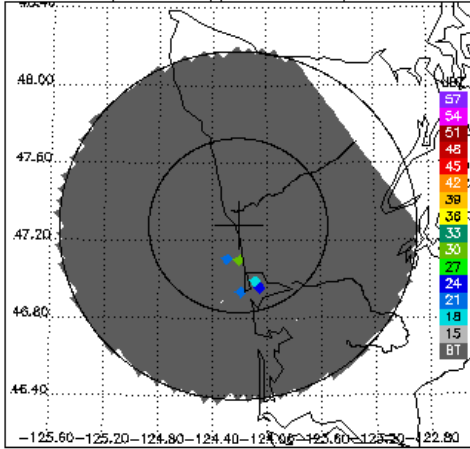
Dm vs. log10(Nw) for DPR 2ADPR/NS/V04A and NPOL_WA -- All non-missing pairs



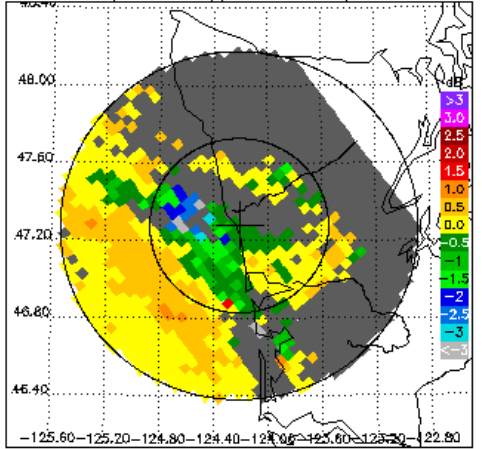
DPR/2ADPR CZ, 0.5° sweep, all valid samples



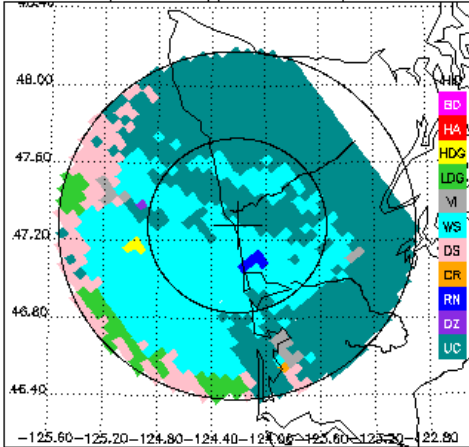
NPOL_WA CZ, 0.5° sweep, all valid samples



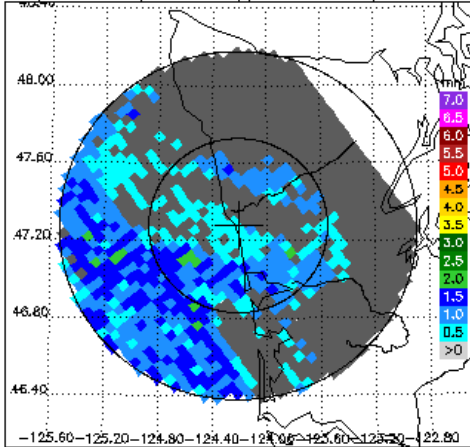
NPOL_WA DR, 0.5° sweep, all valid samples



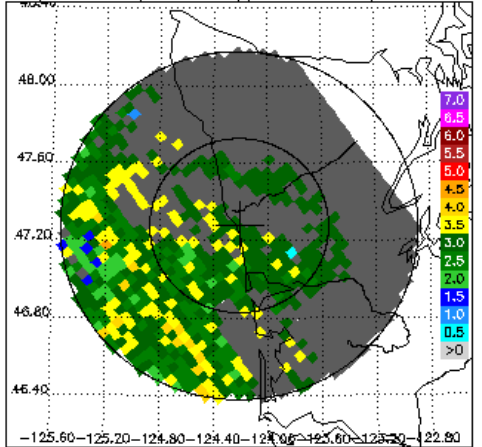
NPOL_WA FH, 0.5° sweep, all valid samples



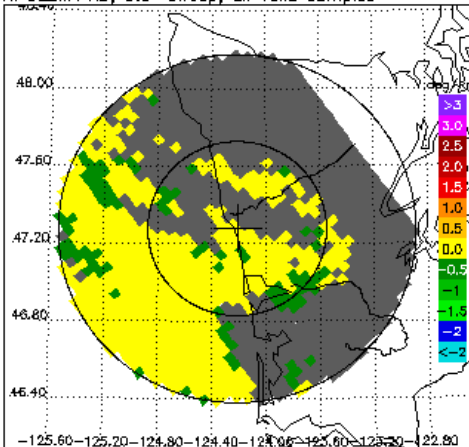
DPR/2ADPR Dm, 0.5° sweep, all valid samples



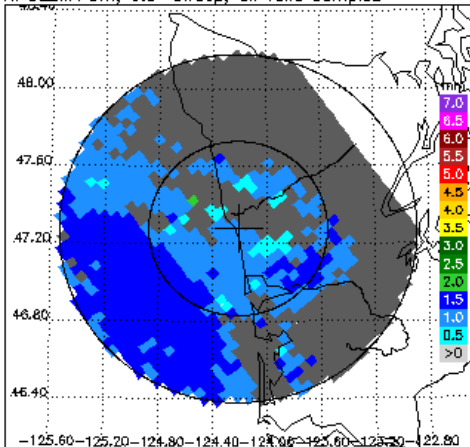
DPR/2ADPR NW, 0.5° sweep, all valid samples



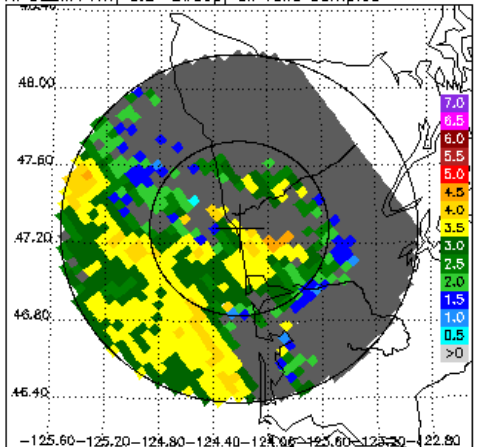
NPOL_WA KD, 0.5° sweep, all valid samples



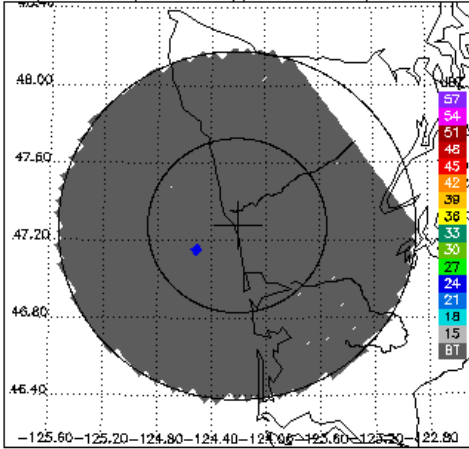
NPOL_WA Dm, 0.5° sweep, all valid samples



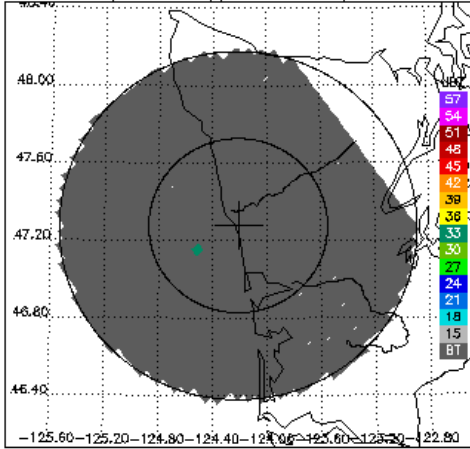
NPOL_WA NW, 0.5° sweep, all valid samples



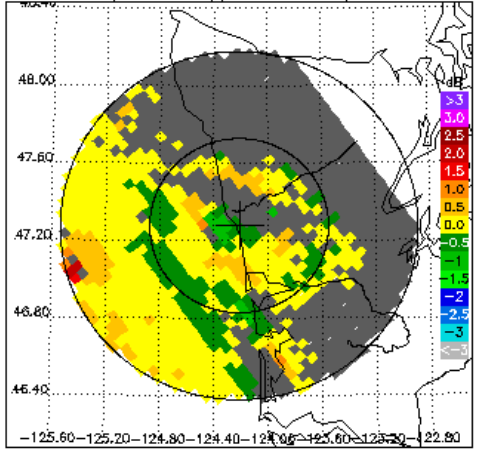
DPR/2ADPR CZ, 1.5° sweep, all valid samples



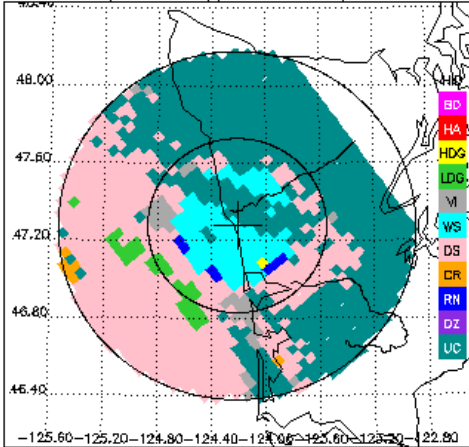
NPOL_WA CZ, 1.5° sweep, all valid samples



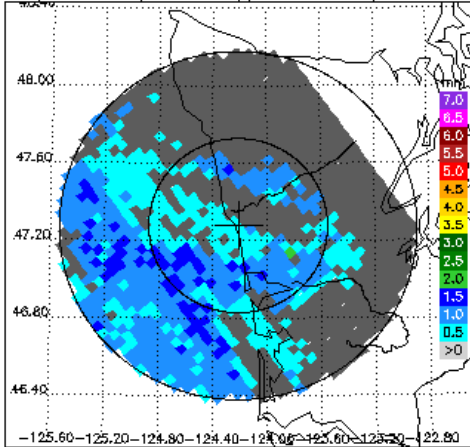
NPOL_WA DR, 1.5° sweep, all valid samples



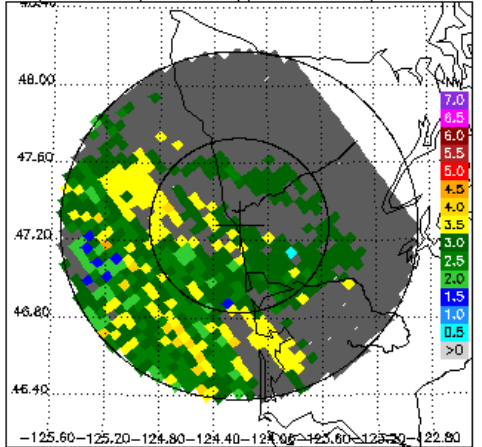
NPOL_WA FH, 1.5° sweep, all valid samples



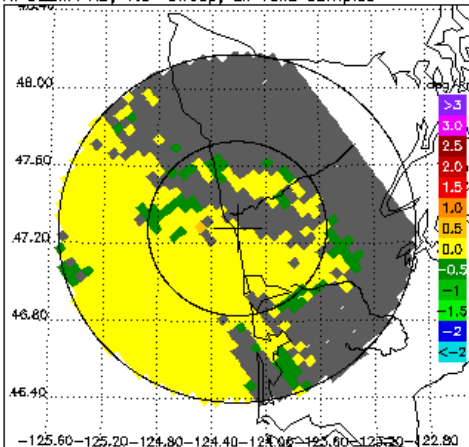
DPR/2ADPR Dm, 1.5° sweep, all valid samples



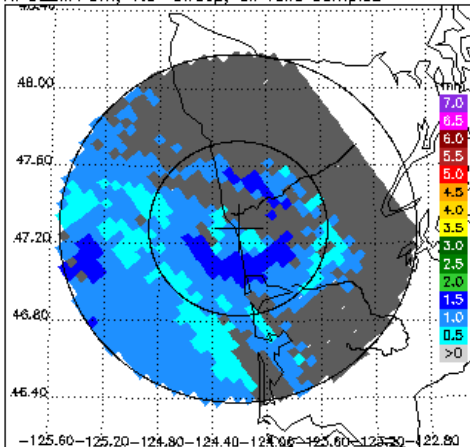
DPR/2ADPR NW, 1.5° sweep, all valid samples



NPOL_WA KD, 1.5° sweep, all valid samples



NPOL_WA Dm, 1.5° sweep, all valid samples



NPOL_WA NW, 1.5° sweep, all valid samples

