

PR-GV Reflectivity difference statistics (dBZ) - GV Site: KHTX Orbit: 75833 V7
 PR time = 2011-03-09 08:54:36 GV start time = 2011-03-09 08:53:02
 Required percent of above-threshold PR and GV bins in matched volumes = 100%

Statistics grouped by fixed height levels (km):

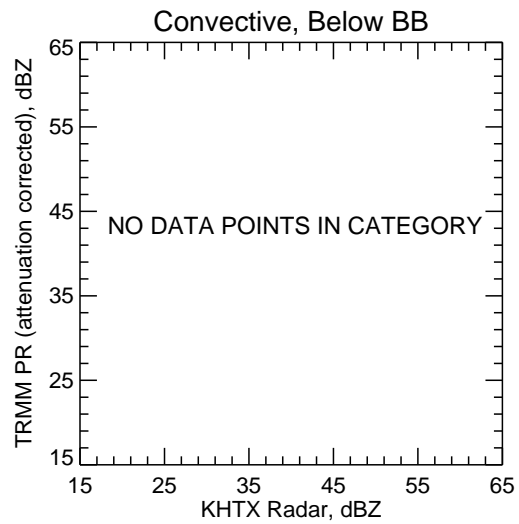
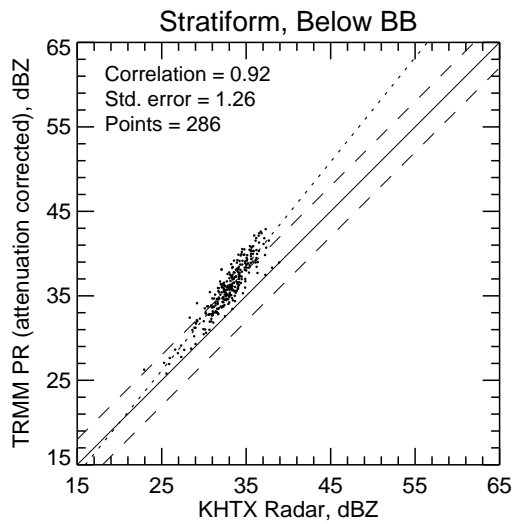
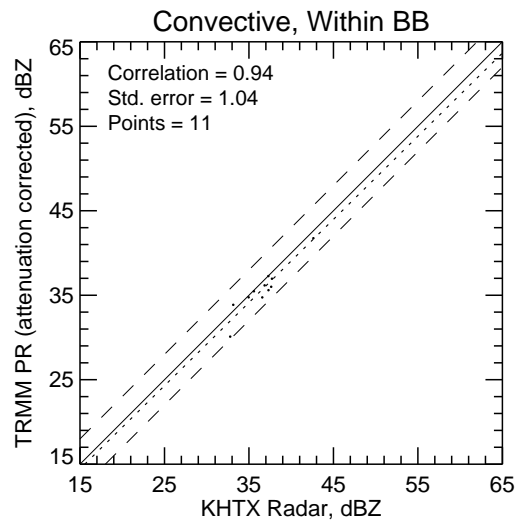
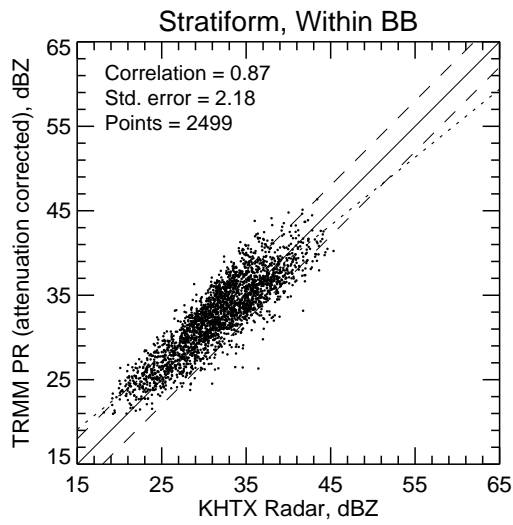
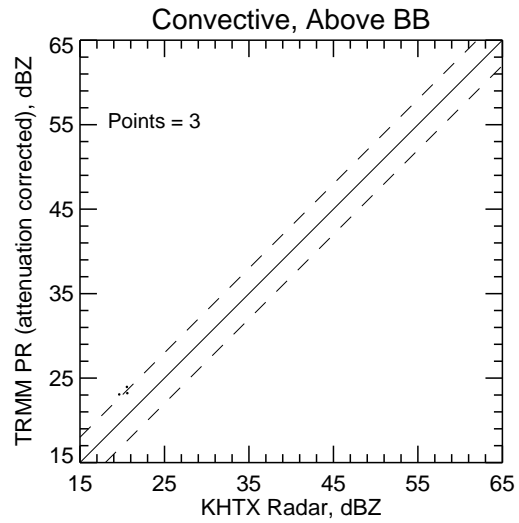
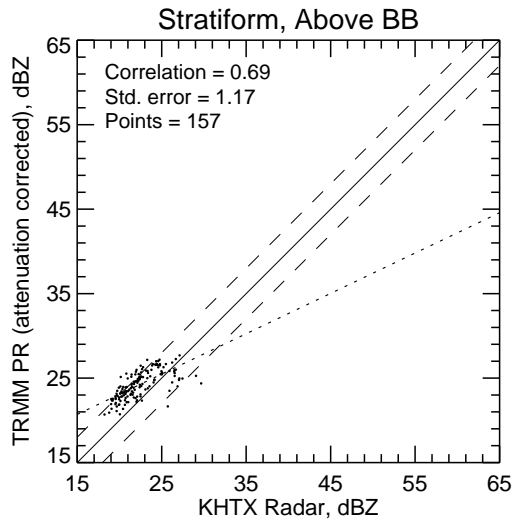
Vert.	Any Rain Type		Stratiform		Convective		Dataset Statistics			
Layer	PR-GV	NumPts	PR-GV	NumPts	PR-GV	NumPts	AvgDist	PR MaxZ	GV MaxZ	BB?
-----	-----	-----	-----	-----	-----	-----	-----	-----	-----	---
1.5	1.474	1311	1.477	1310	-0.875	1	39.690	46.350	45.343	@ BB
3.0	-0.096	1240	-0.089	1229	-0.594	11	57.526	41.456	44.382	@ BB
4.5	2.352	59	2.312	57	2.990	2	53.774	27.259	27.463	

Statistics grouped by proximity to Bright Band:

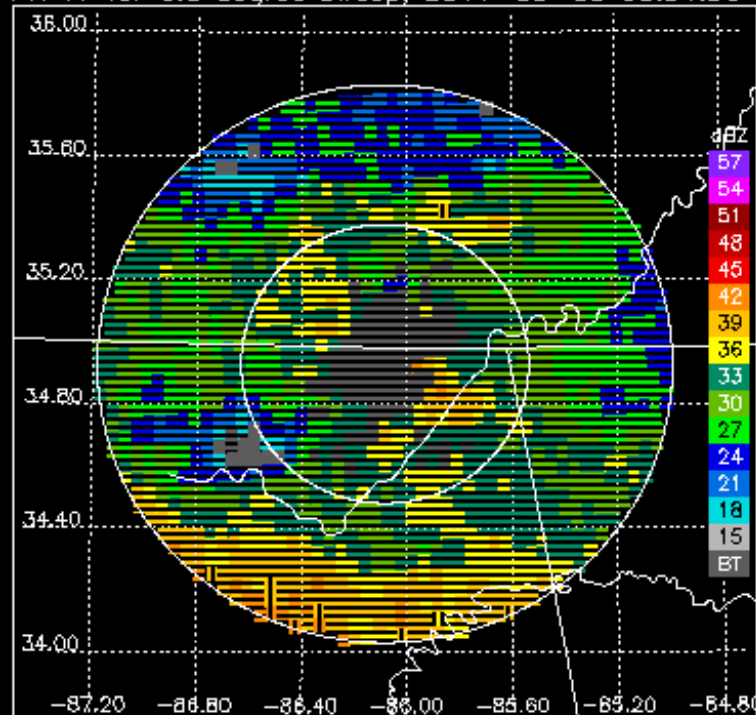
Proxim.	Any Rain Type		Stratiform		Convective		Dataset Statistics			
to BB	PR-GV	NumPts	PR-GV	NumPts	PR-GV	NumPts	AvgDist	PR MaxZ	GV MaxZ	BB?
-----	-----	-----	-----	-----	-----	-----	-----	-----	-----	---
Below	2.904	286	2.904	286	-99.999	0	20.347	42.893	38.908	
Within	0.765	2510	0.777	2499	-0.856	11	52.292	46.350	45.343	@ BB
Above	2.200	160	2.170	157	3.095	3	47.219	27.691	29.675	

KHTX.110309.75833.V7

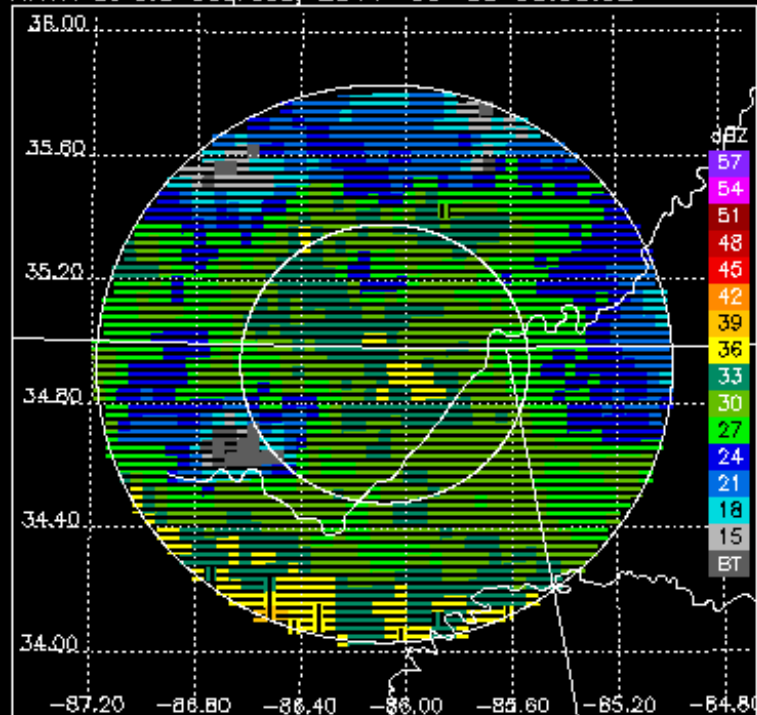
100% bins above threshold



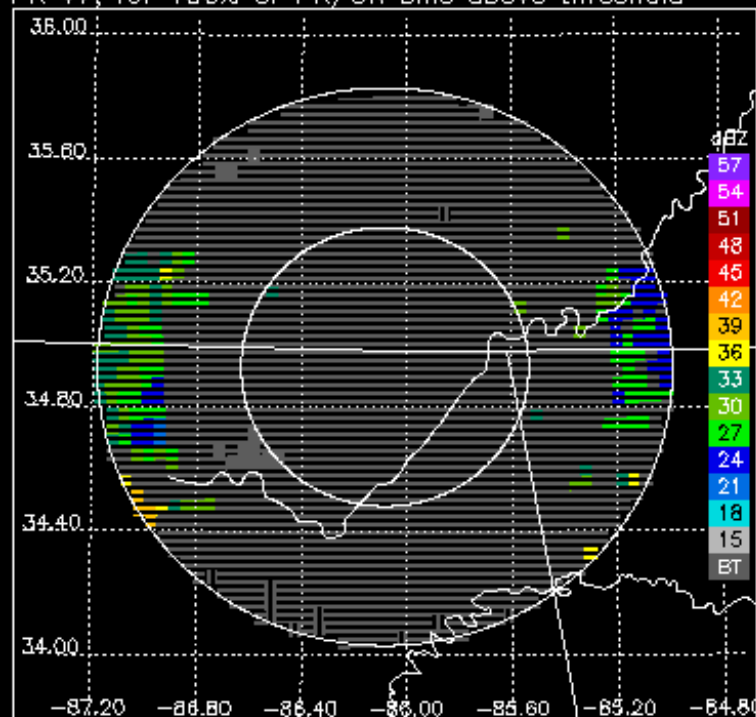
PR V7 for 0.5 degree sweep, 2011-03-09 08:54:36



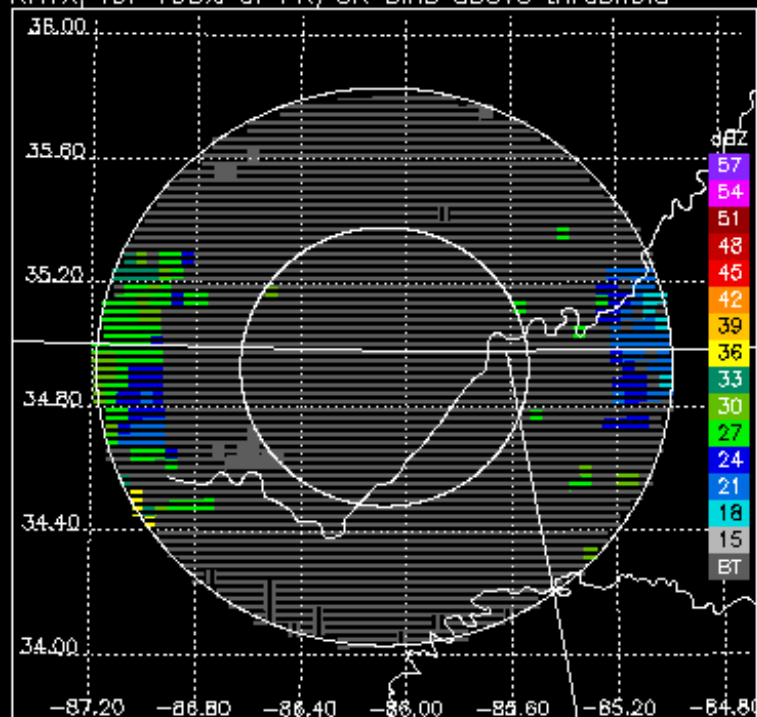
KHTX at 0.5 degrees, 2011-03-09 08:53:02



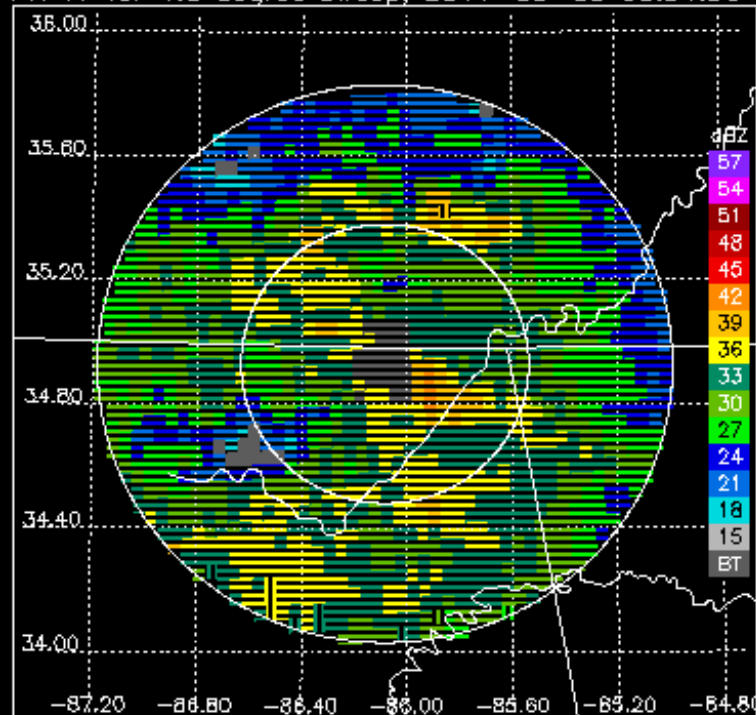
PR V7, for 100% of PR/GR bins above threshold



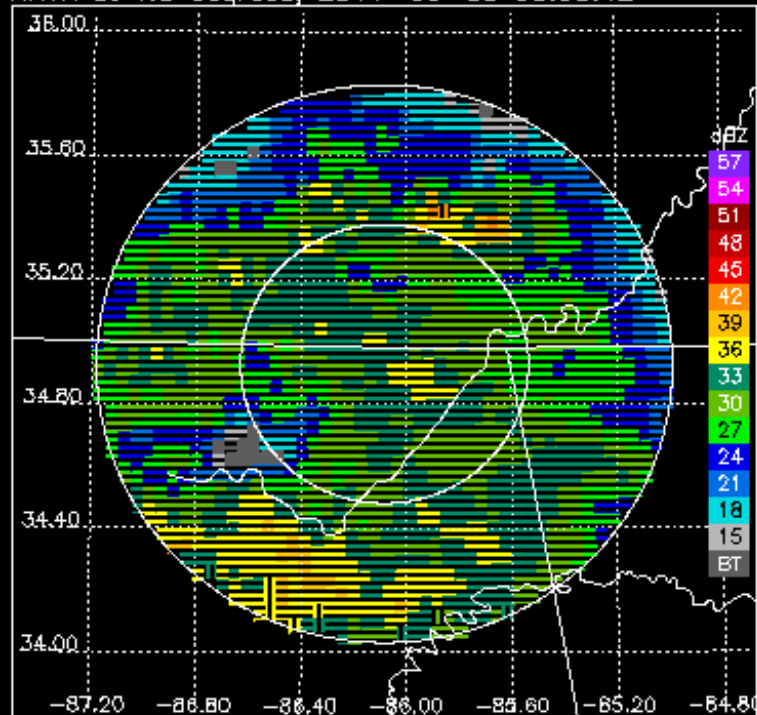
KHTX, for 100% of PR/GR bins above threshold



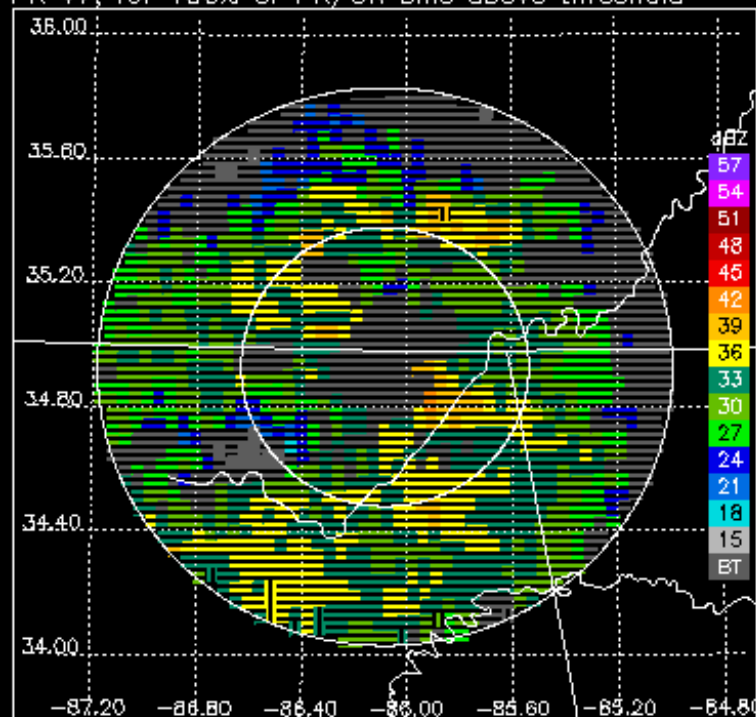
PR V7 for 1.5 degree sweep, 2011-03-09 08:54:36



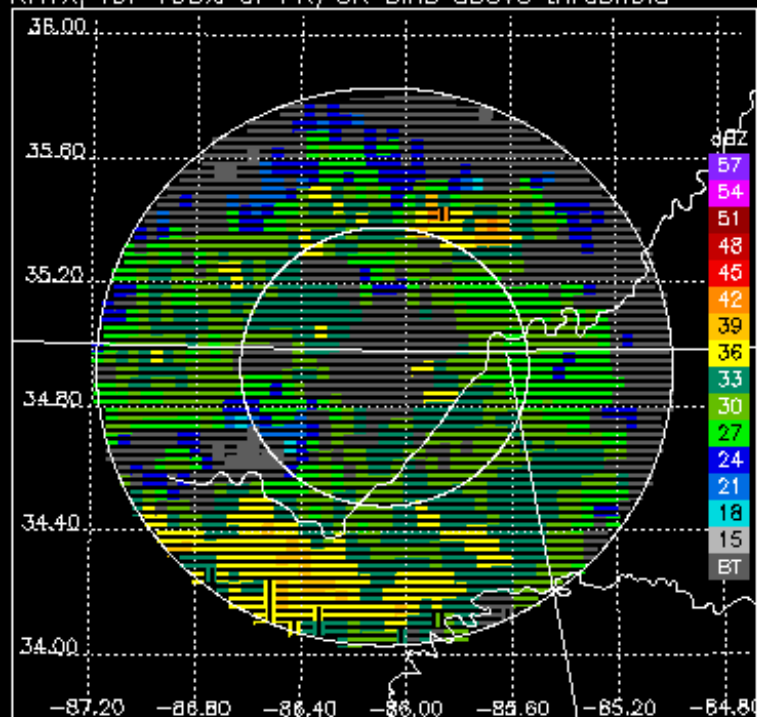
KHTX at 1.5 degrees, 2011-03-09 08:53:42



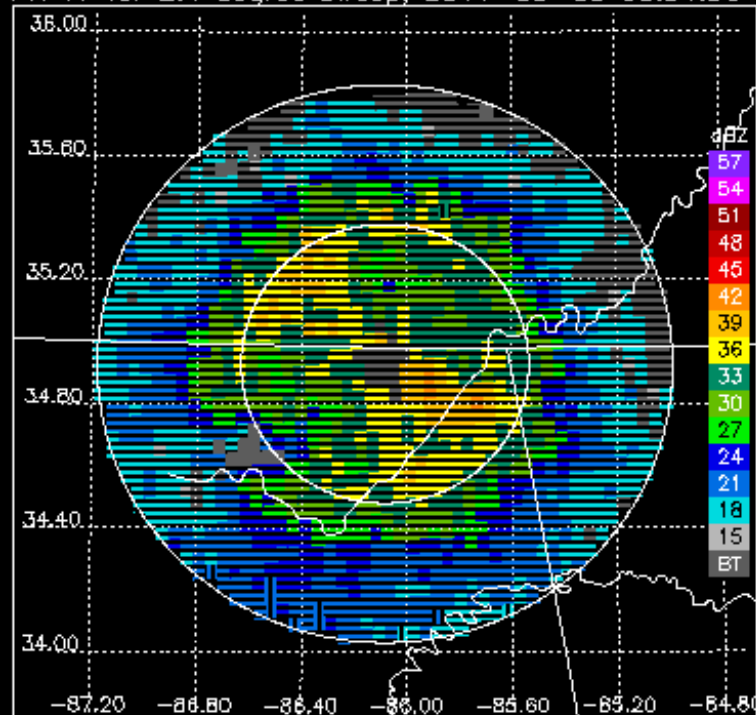
PR V7, for 100% of PR/GR bins above threshold



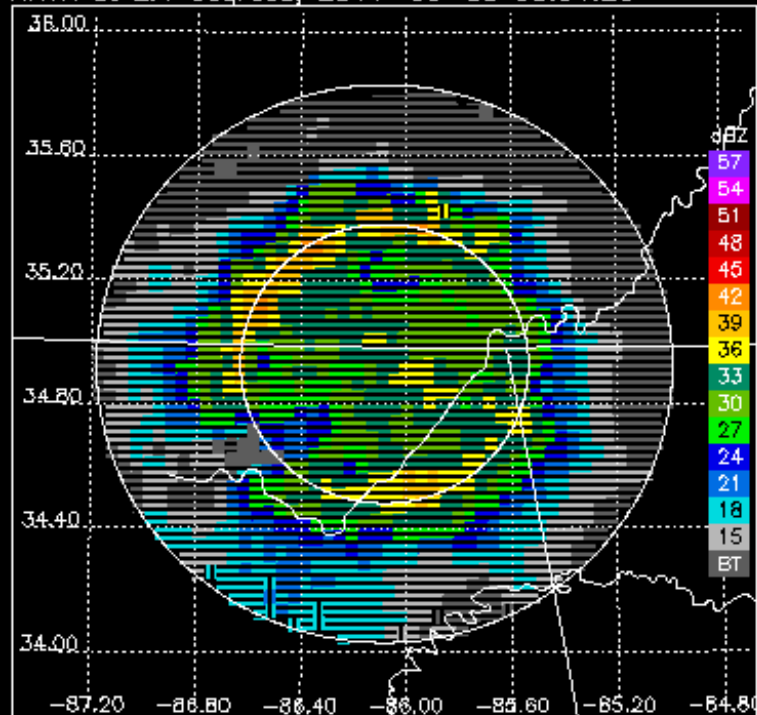
KHTX, for 100% of PR/GR bins above threshold



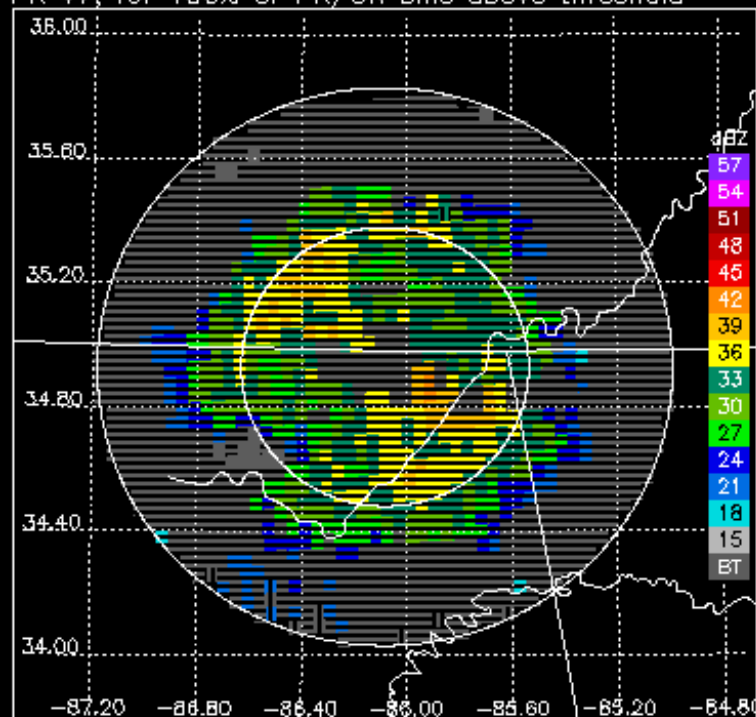
PR V7 for 2.4 degree sweep, 2011-03-09 08:54:36



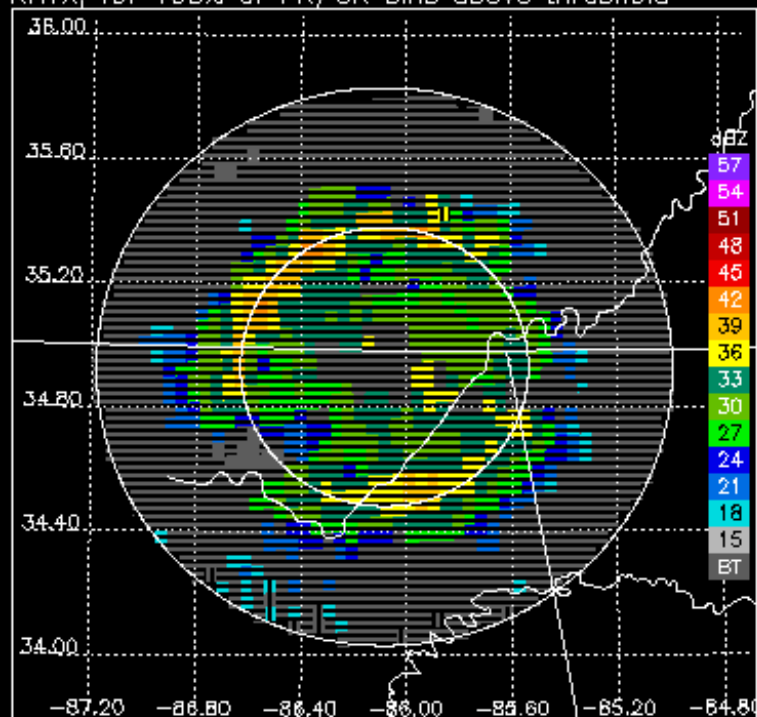
KHTX at 2.4 degrees, 2011-03-09 08:54:20



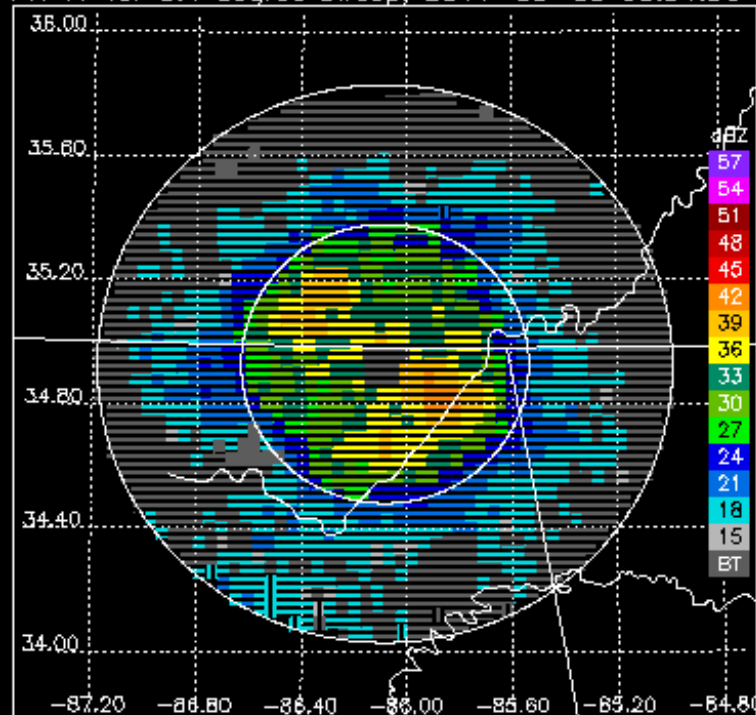
PR V7, for 100% of PR/GR bins above threshold



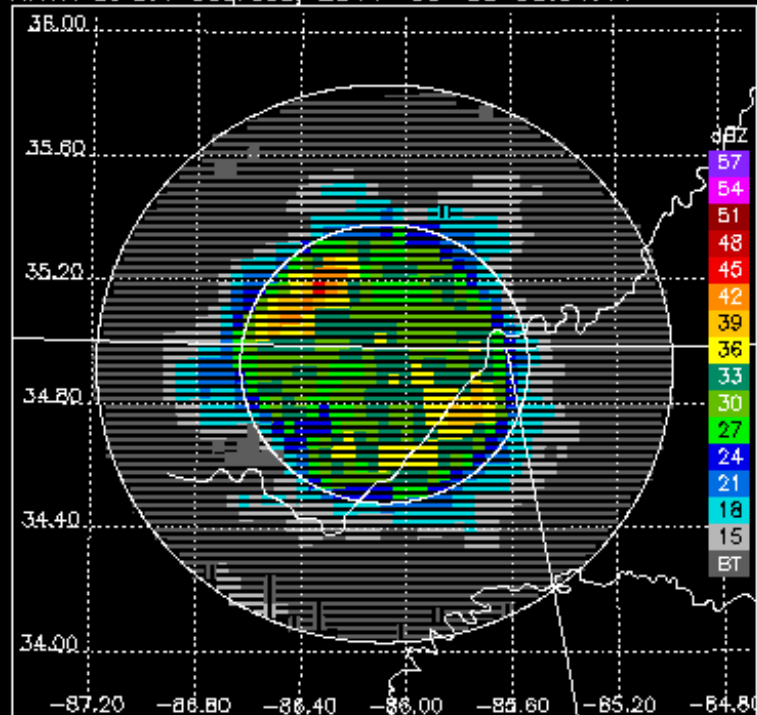
KHTX, for 100% of PR/GR bins above threshold



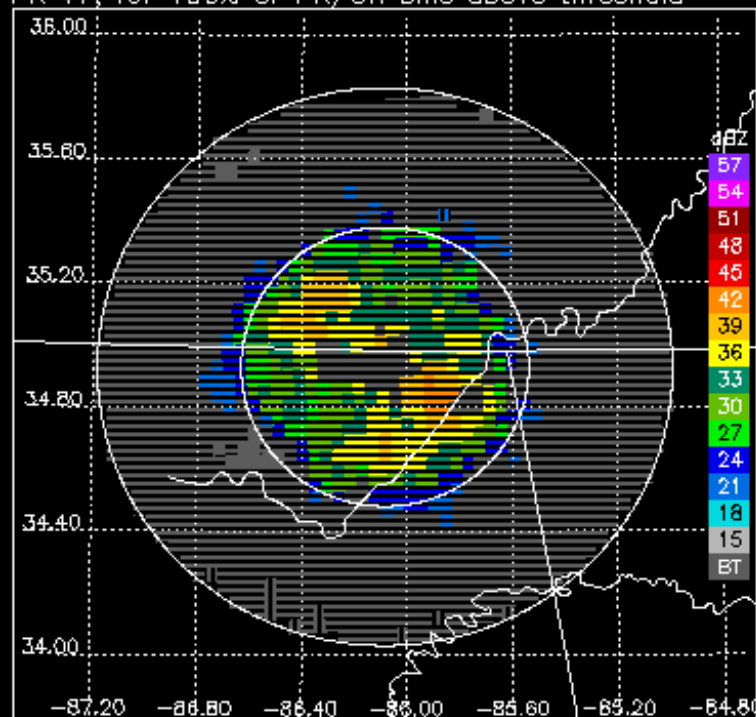
PR V7 for 3.4 degree sweep, 2011-03-09 08:54:36



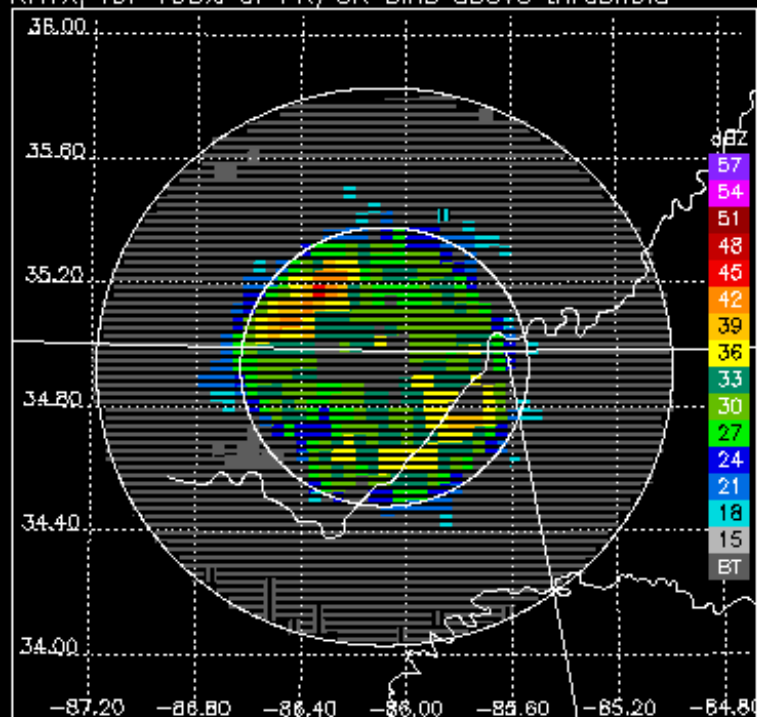
KHTX at 3.4 degrees, 2011-03-09 08:54:44



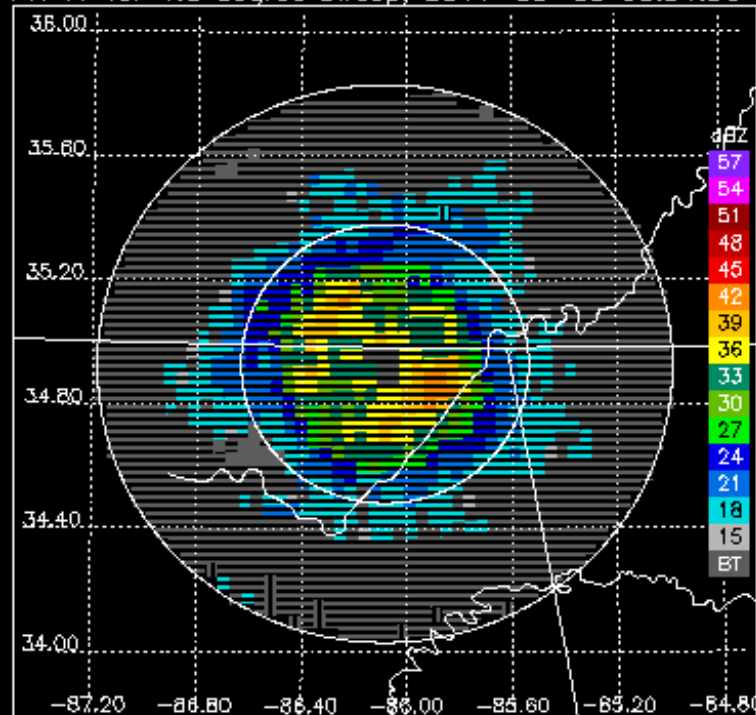
PR V7, for 100% of PR/GR bins above threshold



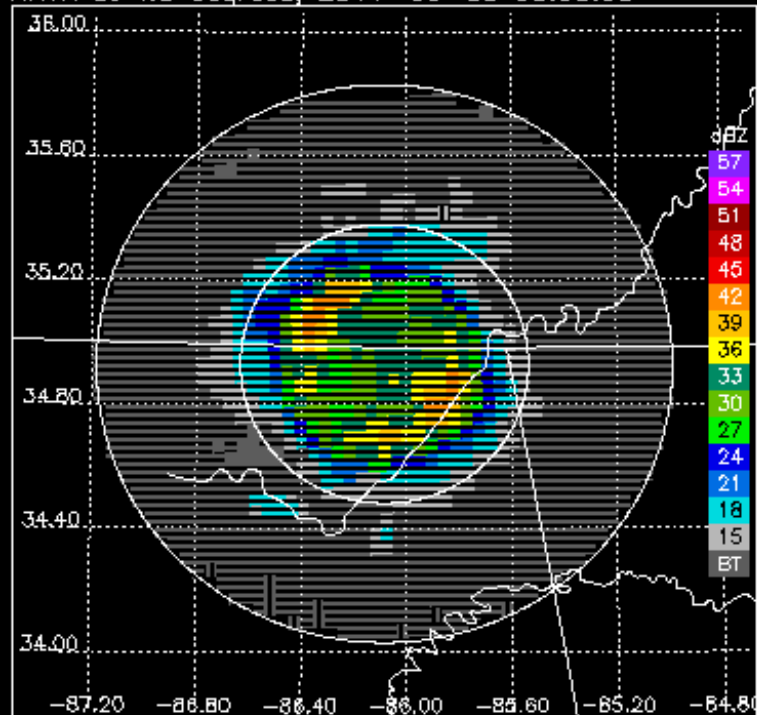
KHTX, for 100% of PR/GR bins above threshold



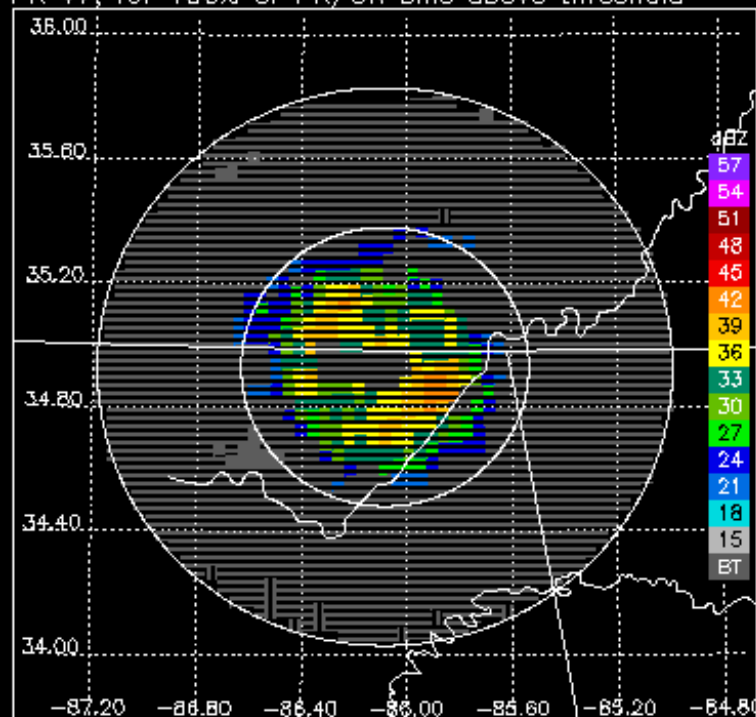
PR V7 for 4.3 degree sweep, 2011-03-09 08:54:36



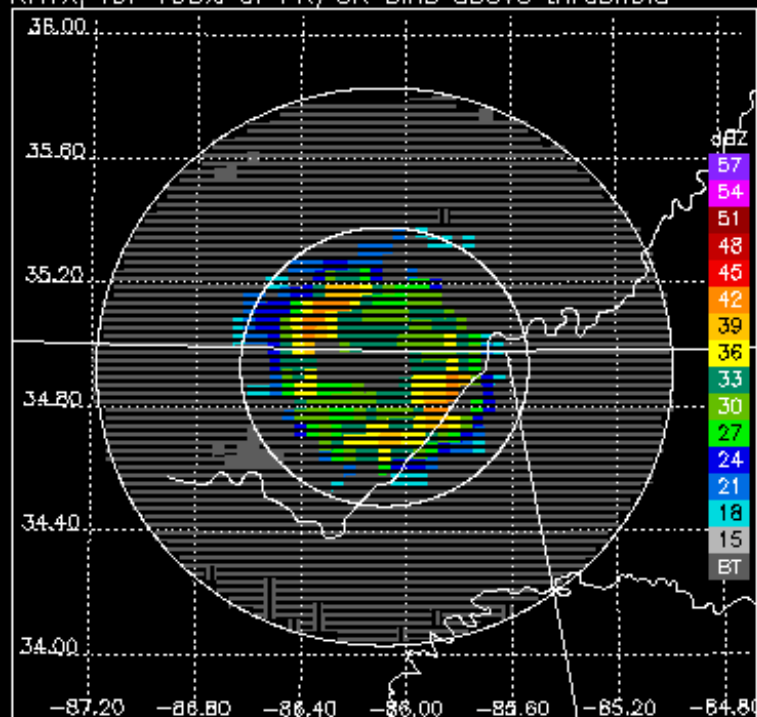
KHTX at 4.3 degrees, 2011-03-09 08:55:05



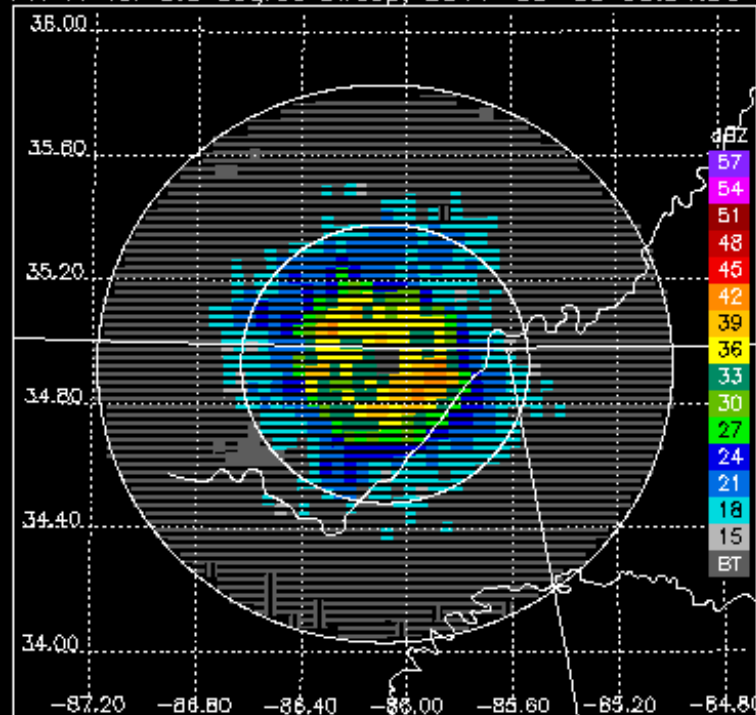
PR V7, for 100% of PR/GR bins above threshold



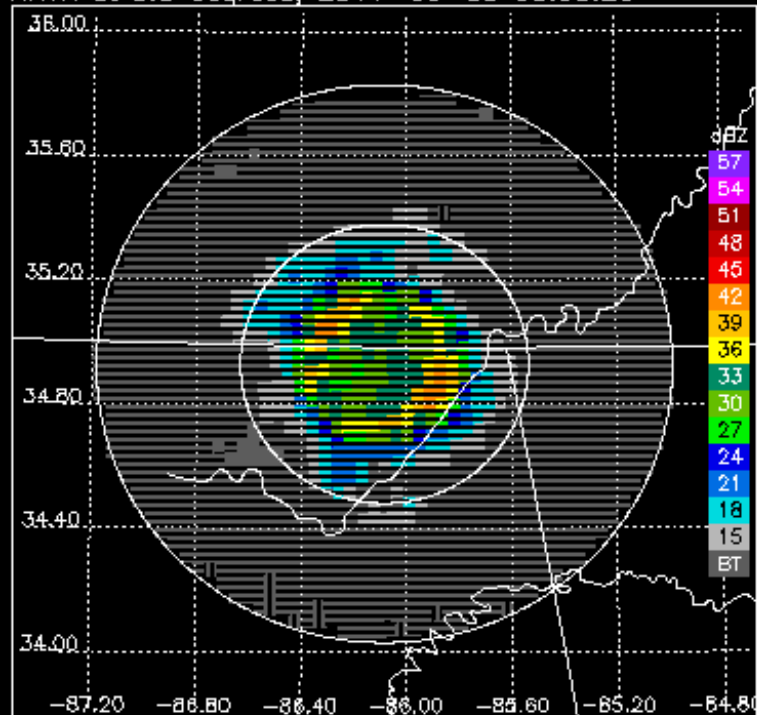
KHTX, for 100% of PR/GR bins above threshold



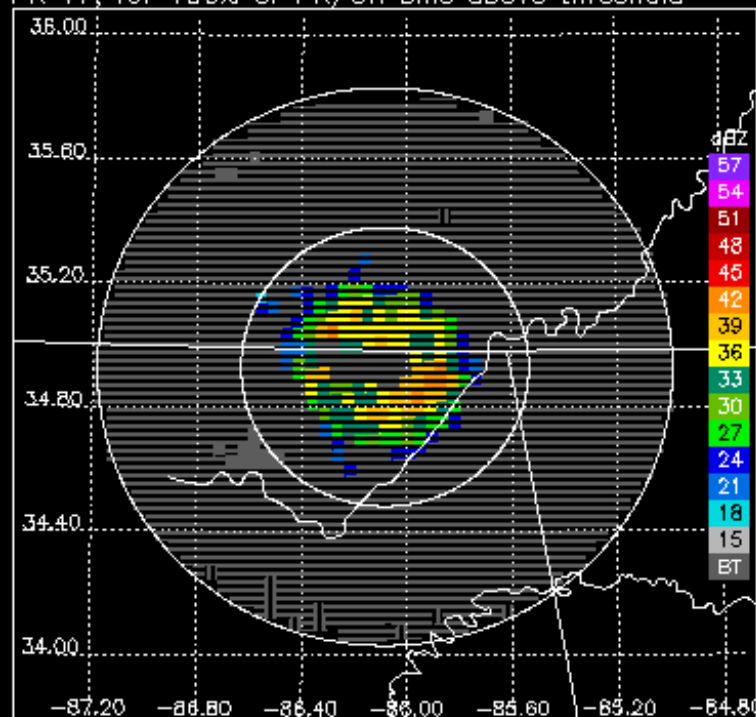
PR V7 for 5.3 degree sweep, 2011-03-09 08:54:36



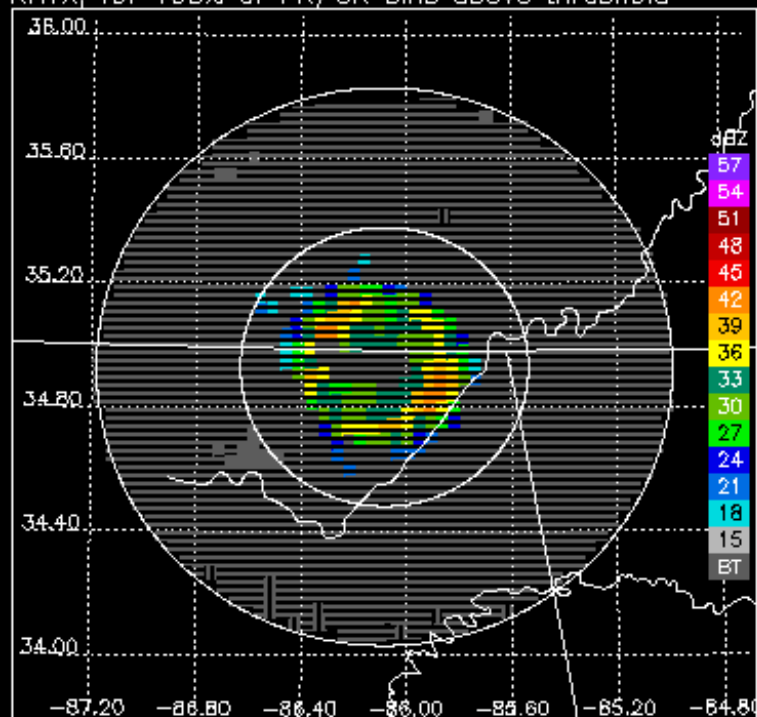
KHTX at 5.3 degrees, 2011-03-09 08:55:26



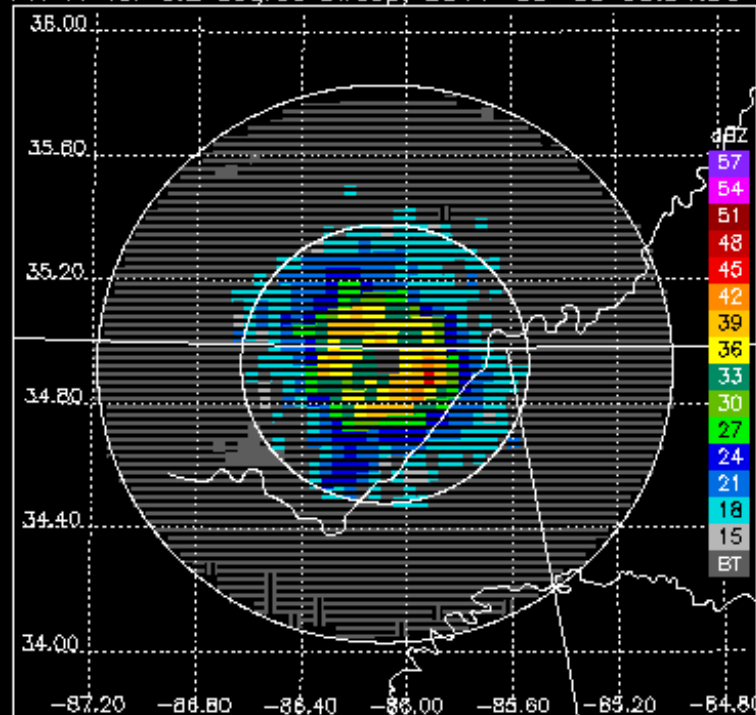
PR V7, for 100% of PR/GR bins above threshold



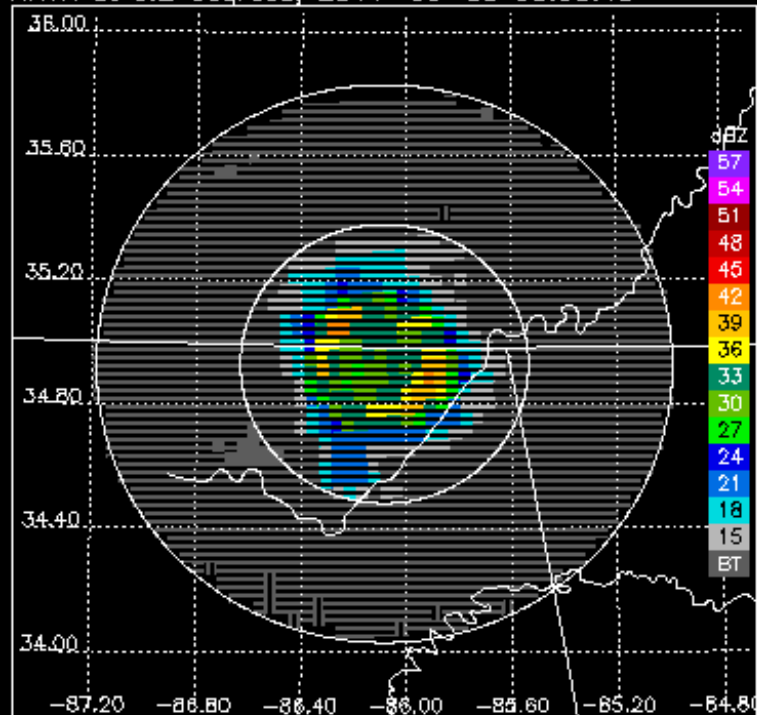
KHTX, for 100% of PR/GR bins above threshold



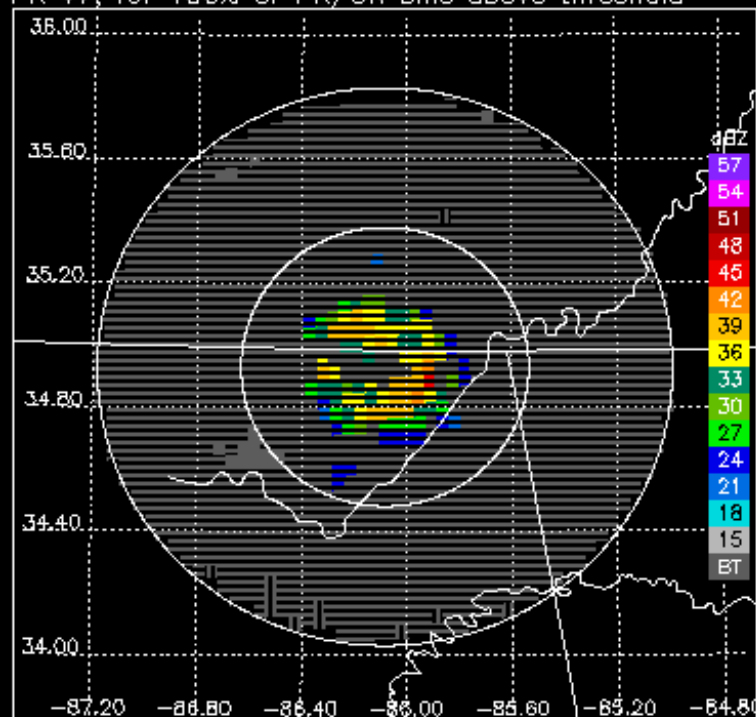
PR V7 for 6.2 degree sweep, 2011-03-09 08:54:36



KHTX at 6.2 degrees, 2011-03-09 08:55:48



PR V7, for 100% of PR/GR bins above threshold



KHTX, for 100% of PR/GR bins above threshold

