

PR-GV Reflectivity difference statistics (dBZ) - GV Site: KJAX Orbit: 54386 V7
 PR time = 2007-06-02 07:55:38 GV start time = 2007-06-02 07:54:11
 Required percent of above-threshold PR and GV bins in matched volumes = 100%

Statistics grouped by fixed height levels (km):

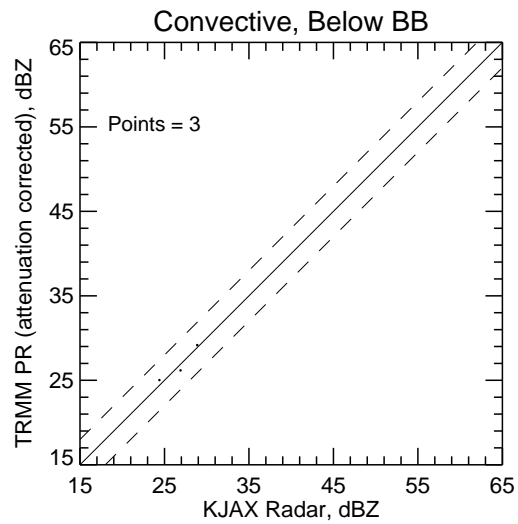
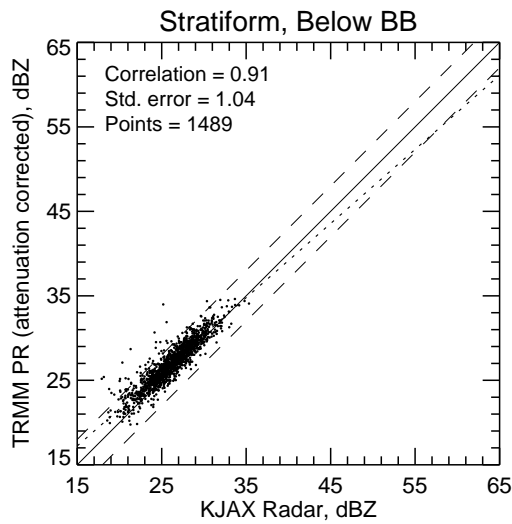
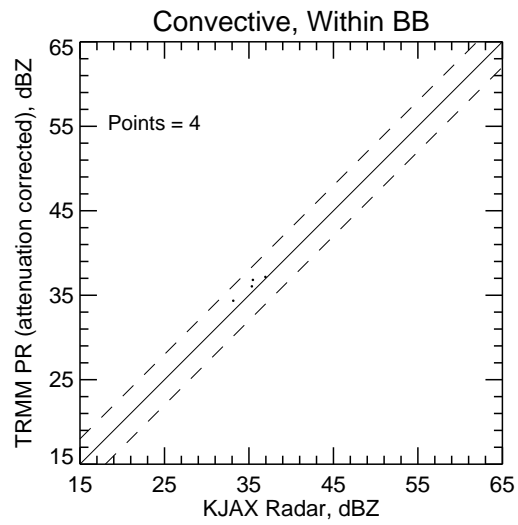
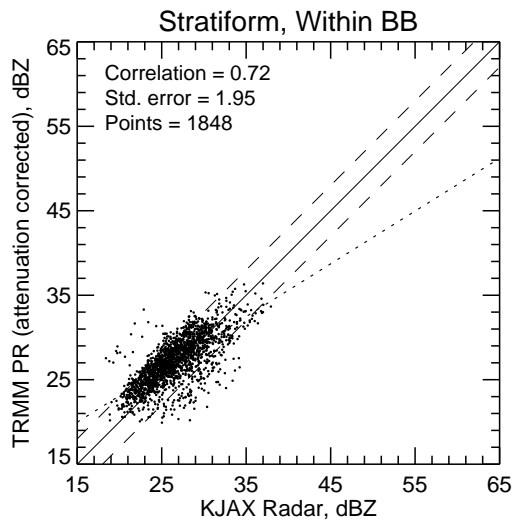
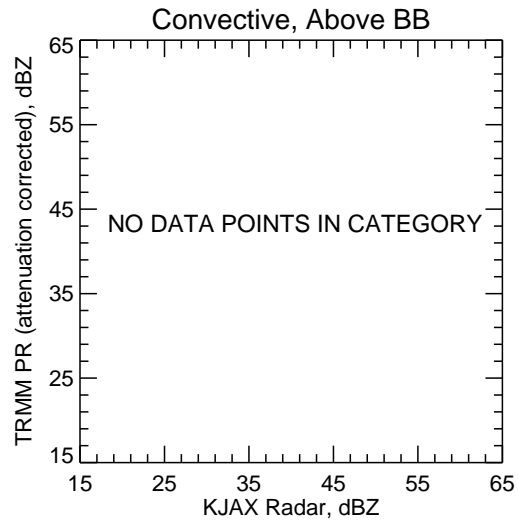
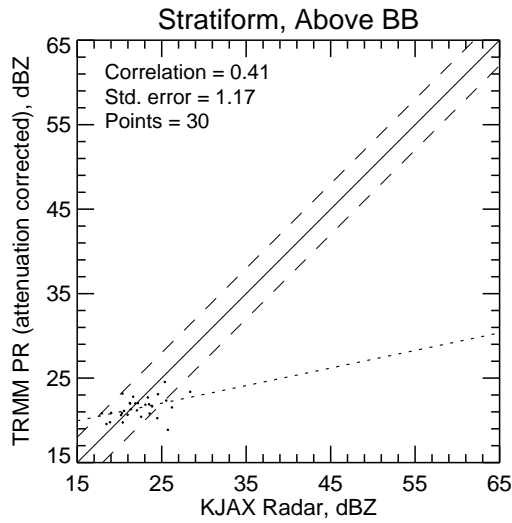
Vert. Layer	Any Rain Type		Stratiform		Convective		Dataset Statistics			BB?
	PR-GV	NumPts	PR-GV	NumPts	PR-GV	NumPts	AvgDist	PR MaxZ	GV MaxZ	
-----	-----	-----	-----	-----	-----	-----	-----	-----	-----	---
1.5	0.883	977	0.885	975	-0.218	2	49.653	34.624	35.335	
3.0	1.487	1640	1.489	1635	0.852	5	65.856	37.170	36.992	@ BB
4.5	-1.170	688	-1.170	688	-99.999	0	67.531	35.477	37.929	@ BB
6.0	-1.057	27	-1.057	27	-99.999	0	80.262	24.544	29.001	

Statistics grouped by proximity to Bright Band:

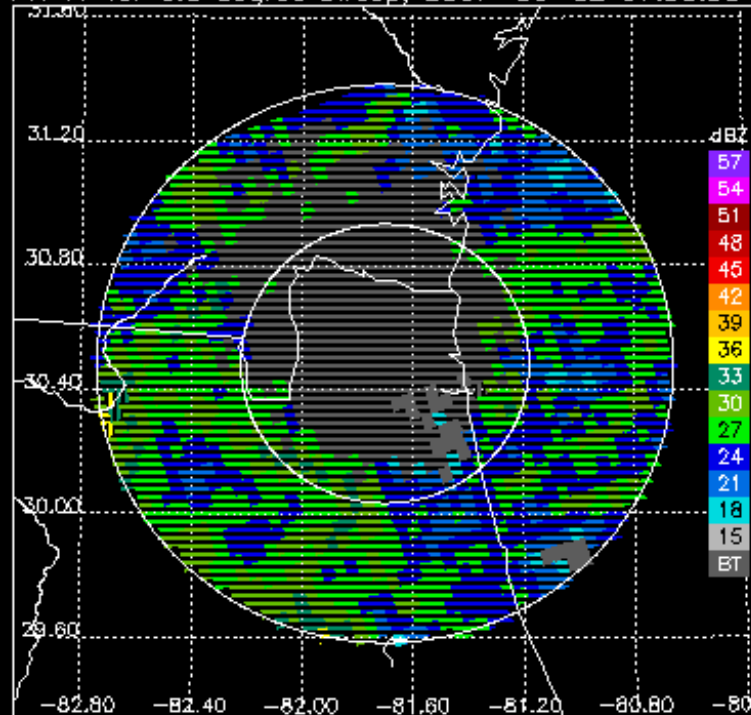
Proxim. to BB	Any Rain Type		Stratiform		Convective		Dataset Statistics			BB?
	PR-GV	NumPts	PR-GV	NumPts	PR-GV	NumPts	AvgDist	PR MaxZ	GV MaxZ	
-----	-----	-----	-----	-----	-----	-----	-----	-----	-----	---
Below	0.893	1492	0.894	1489	0.064	3	51.271	34.624	35.335	
Within	0.629	1852	0.628	1848	0.872	4	69.135	37.170	37.929	@ BB
Above	-0.545	30	-0.545	30	-99.999	0	64.998	24.544	28.372	

KJAX.070602.54386.V7

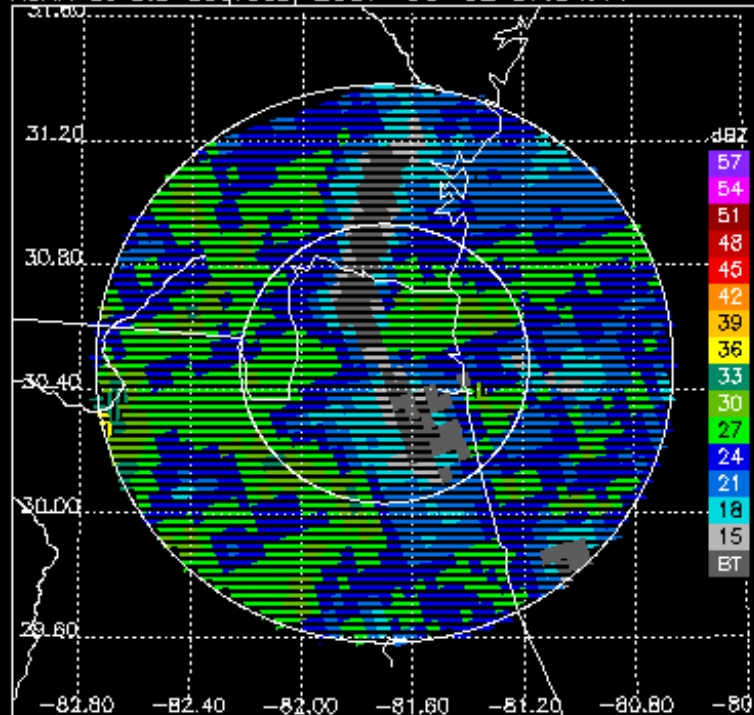
100% bins above threshold



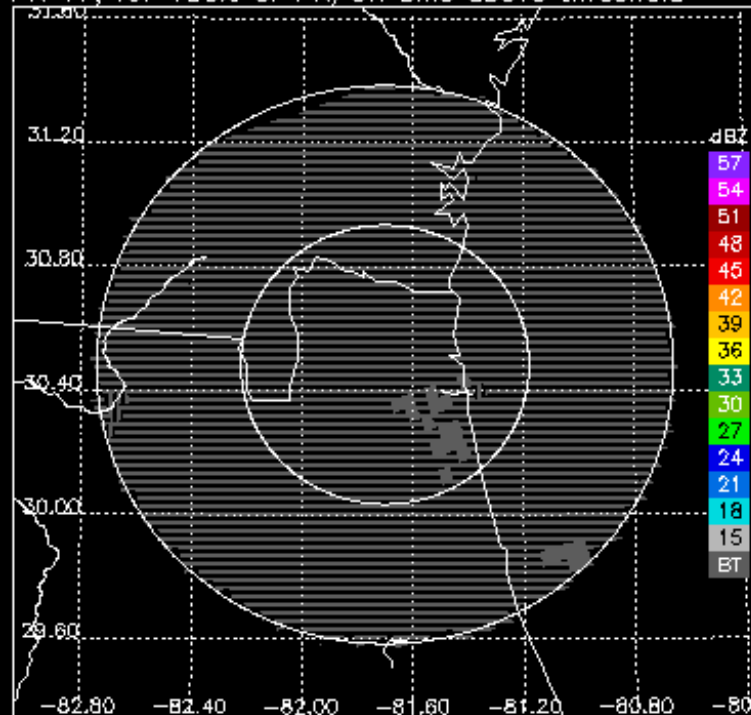
PR V7 for 0.5 degree sweep, 2007-06-02 07:55:38



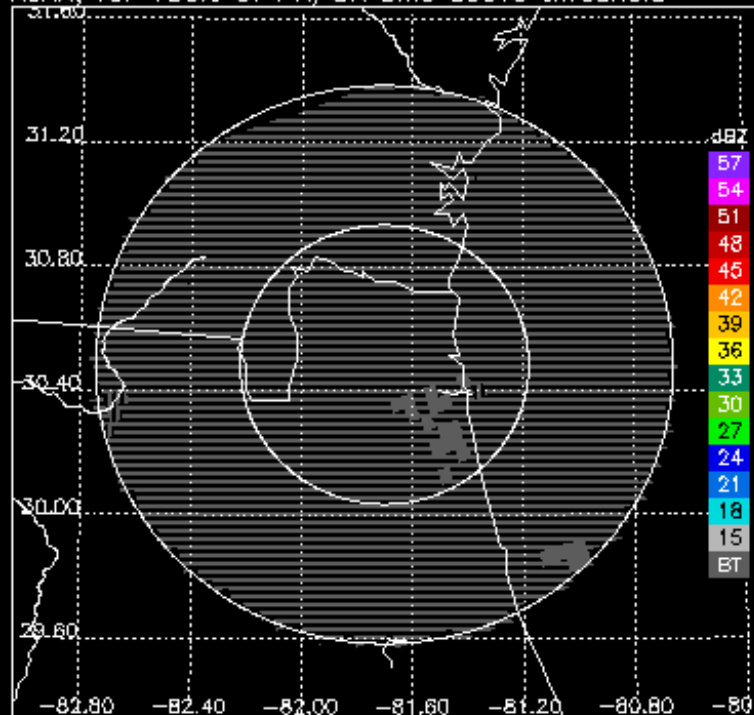
KJAX at 0.5 degrees, 2007-06-02 07:54:11



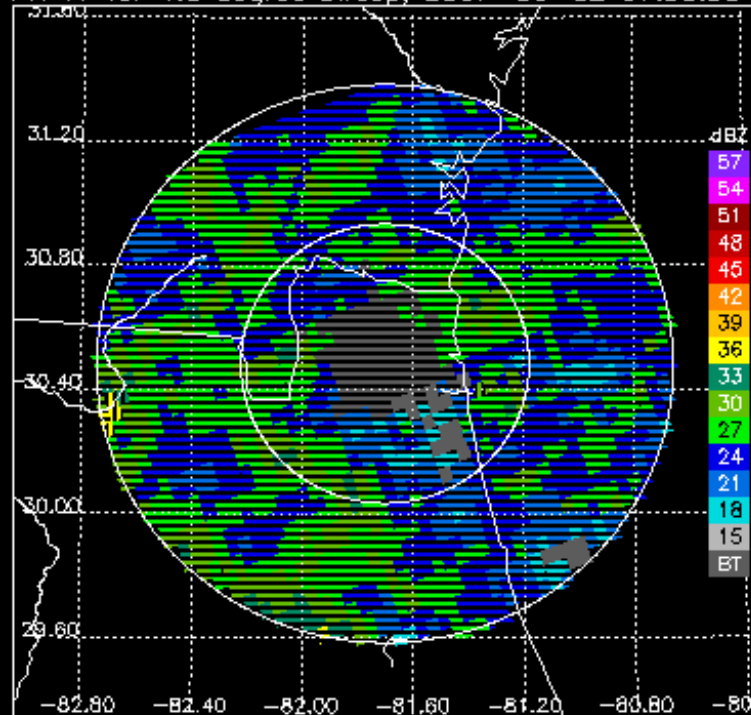
PR V7, for 100% of PR/GR bins above threshold



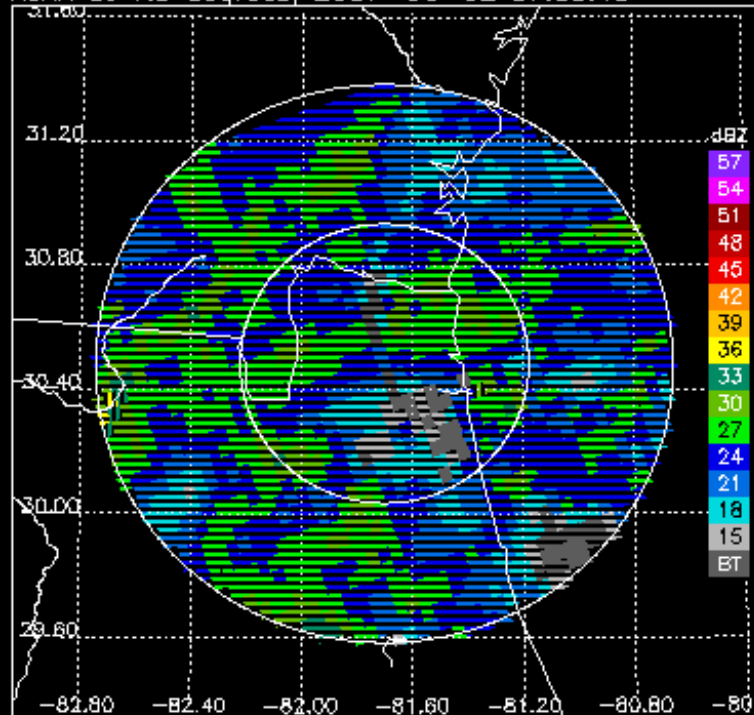
KJAX, for 100% of PR/GR bins above threshold



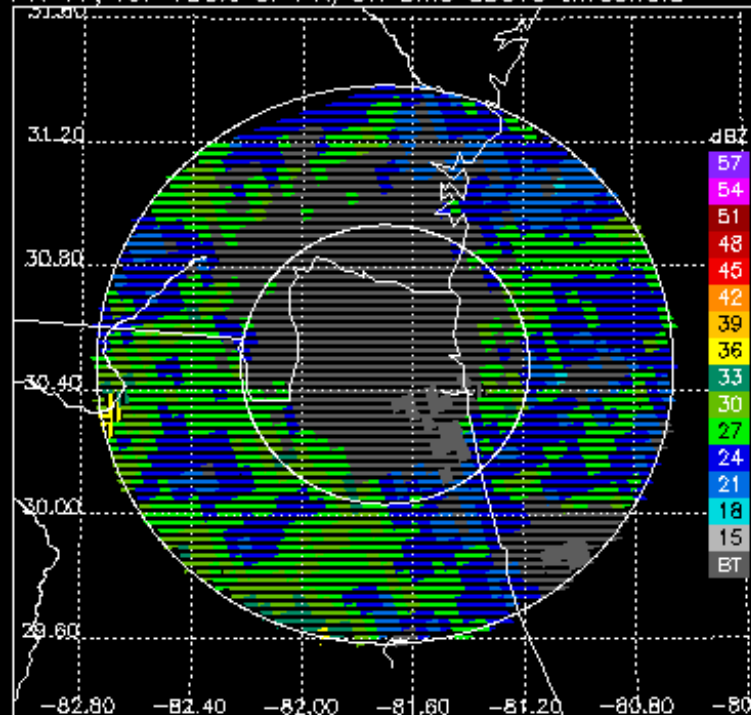
PR V7 for 1.5 degree sweep, 2007-06-02 07:55:38



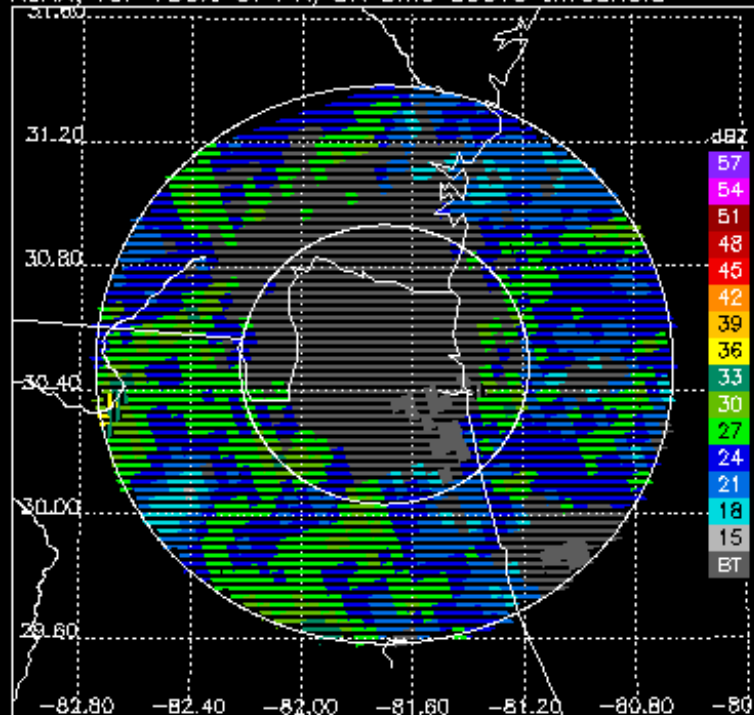
KJAX at 1.5 degrees, 2007-06-02 07:55:15



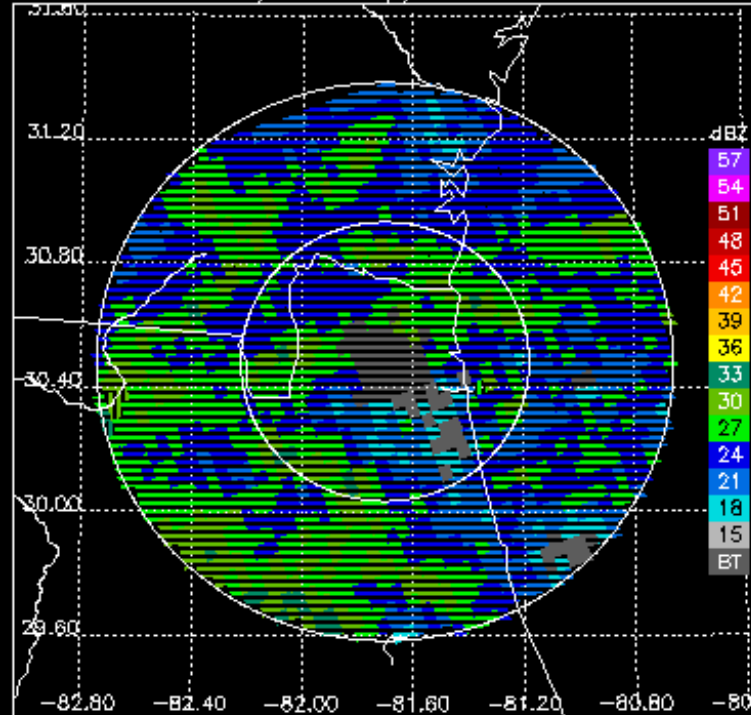
PR V7, for 100% of PR/GR bins above threshold



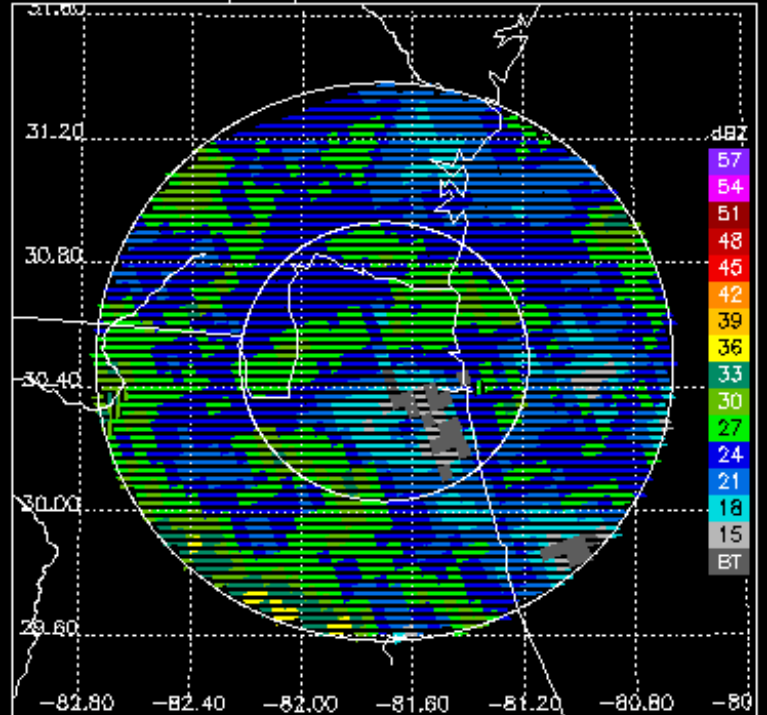
KJAX, for 100% of PR/GR bins above threshold



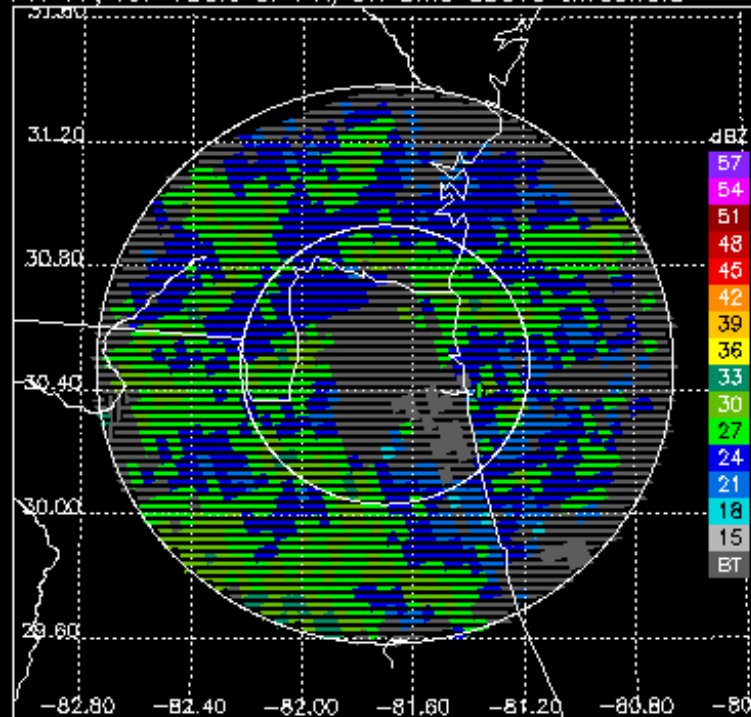
PR V7 for 2.4 degree sweep, 2007-06-02 07:55:38



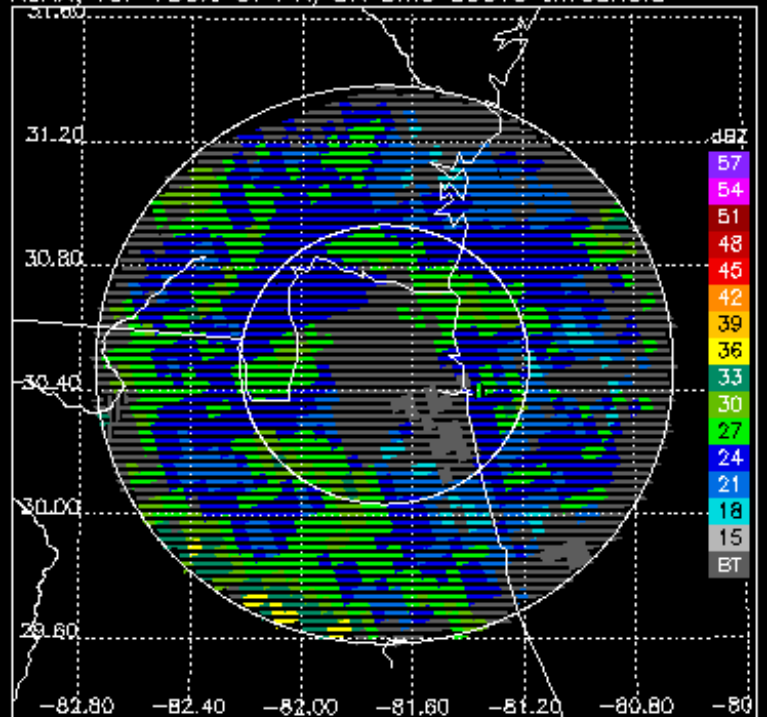
KJAX at 2.4 degrees, 2007-06-02 07:56:19



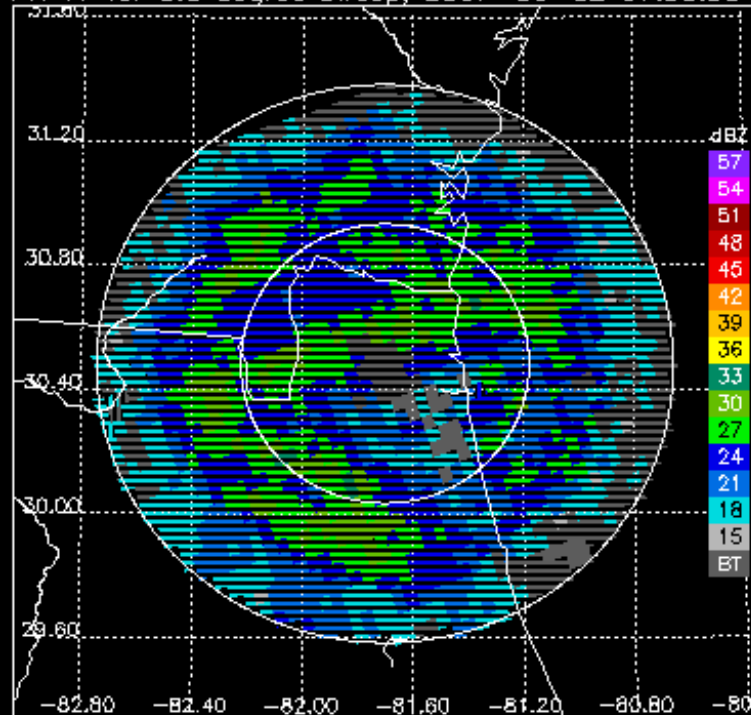
PR V7, for 100% of PR/GR bins above threshold



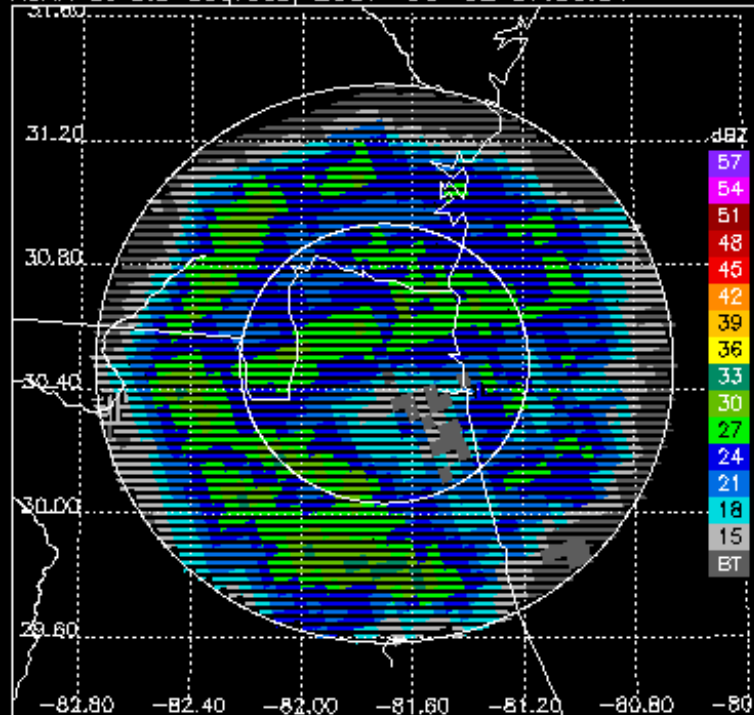
KJAX, for 100% of PR/GR bins above threshold



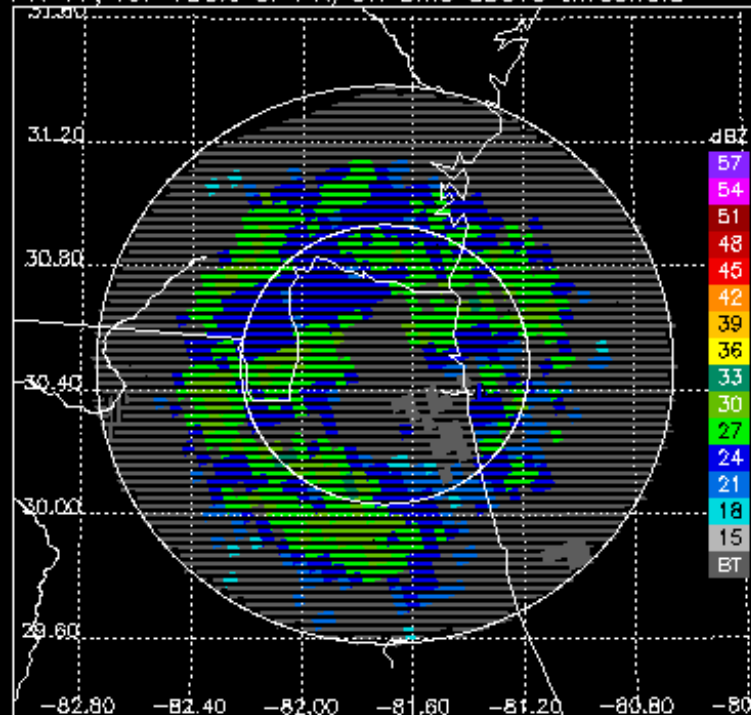
PR V7 for 3.3 degree sweep, 2007-06-02 07:55:38



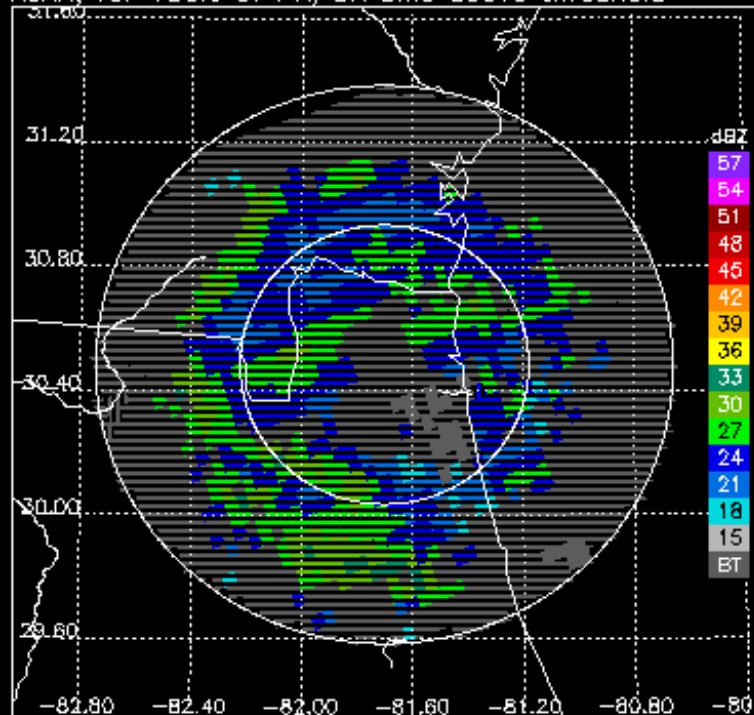
KJAX at 3.3 degrees, 2007-06-02 07:56:51



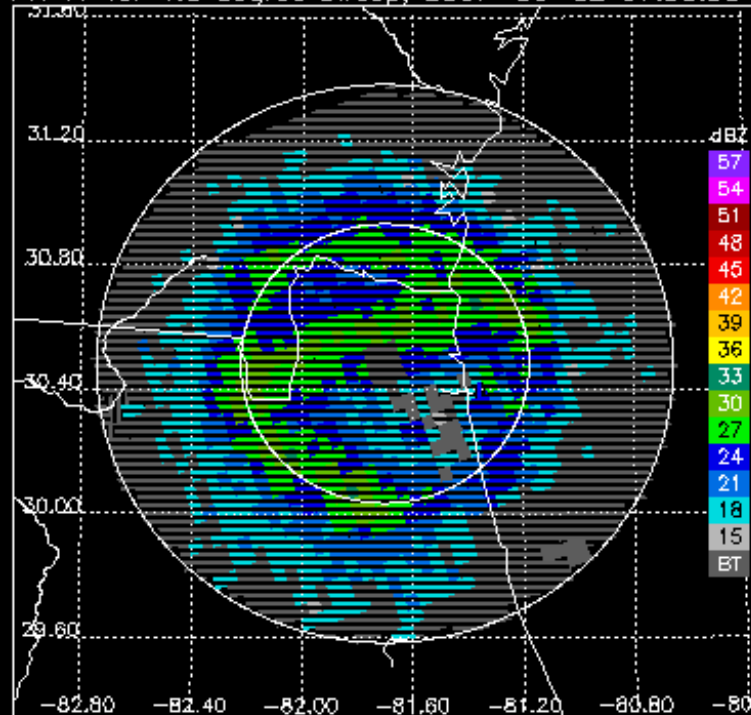
PR V7, for 100% of PR/GR bins above threshold



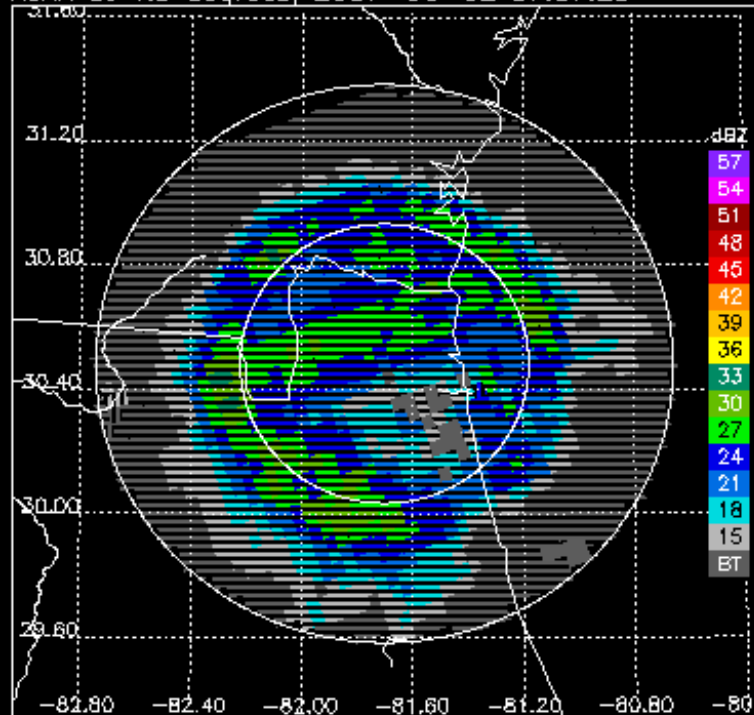
KJAX, for 100% of PR/GR bins above threshold



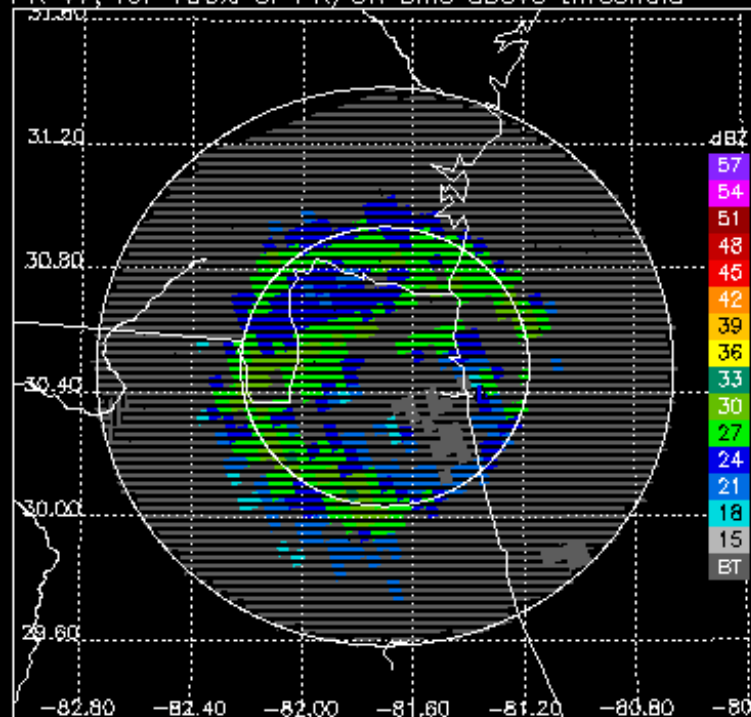
PR V7 for 4.3 degree sweep, 2007-06-02 07:55:38



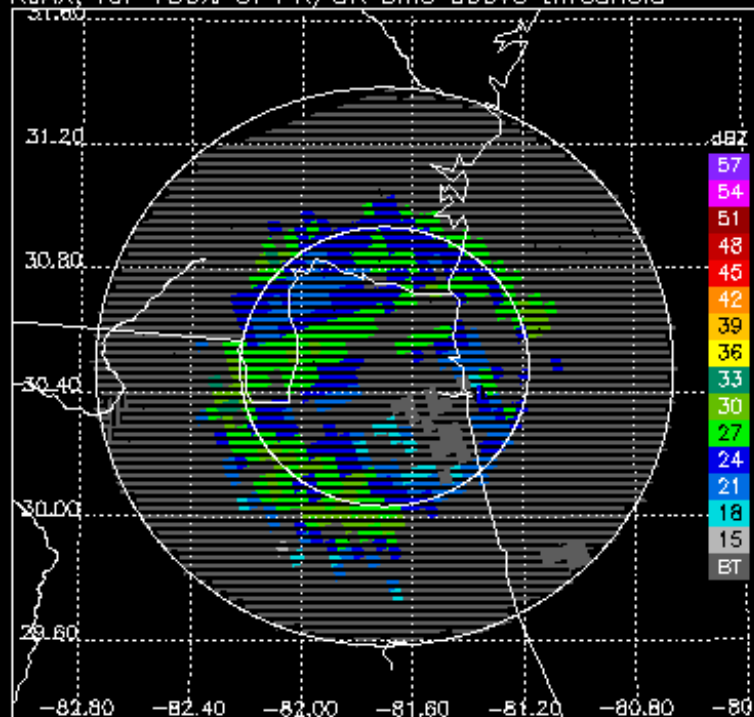
KJAX at 4.3 degrees, 2007-06-02 07:57:23



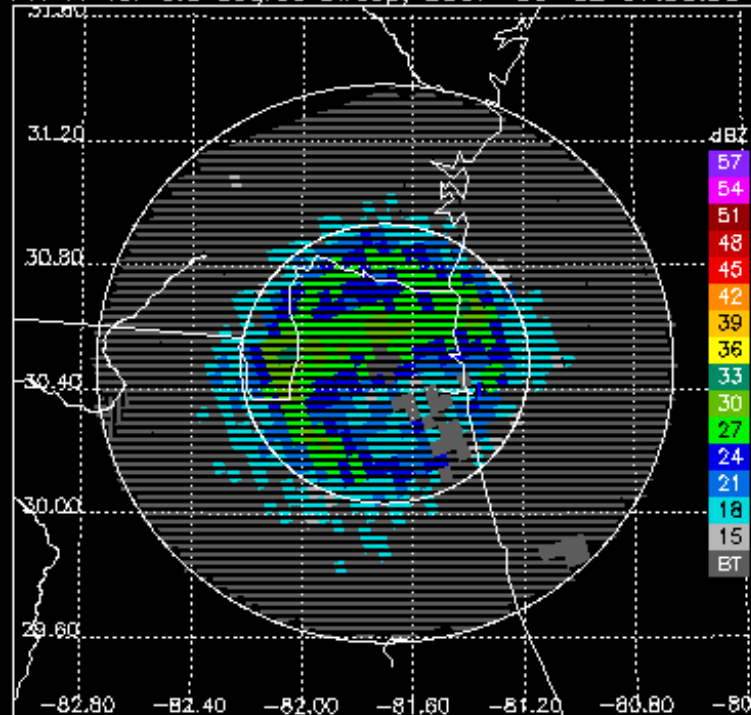
PR V7, for 100% of PR/GR bins above threshold



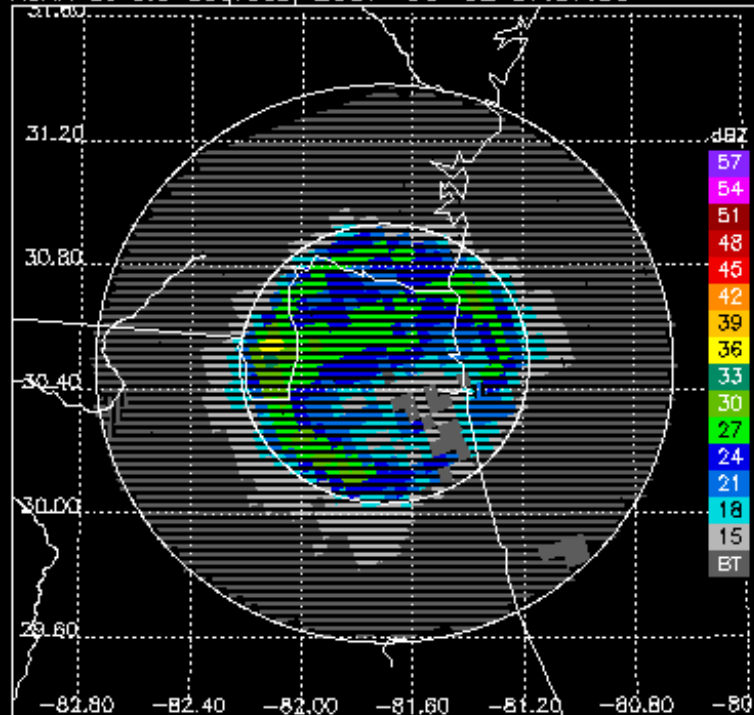
KJAX, for 100% of PR/GR bins above threshold



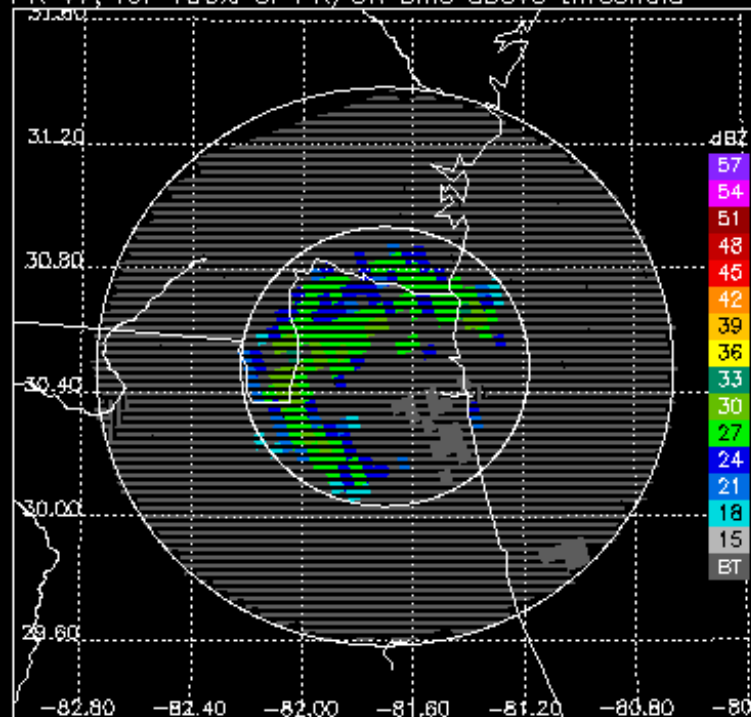
PR V7 for 6.0 degree sweep, 2007-06-02 07:55:38



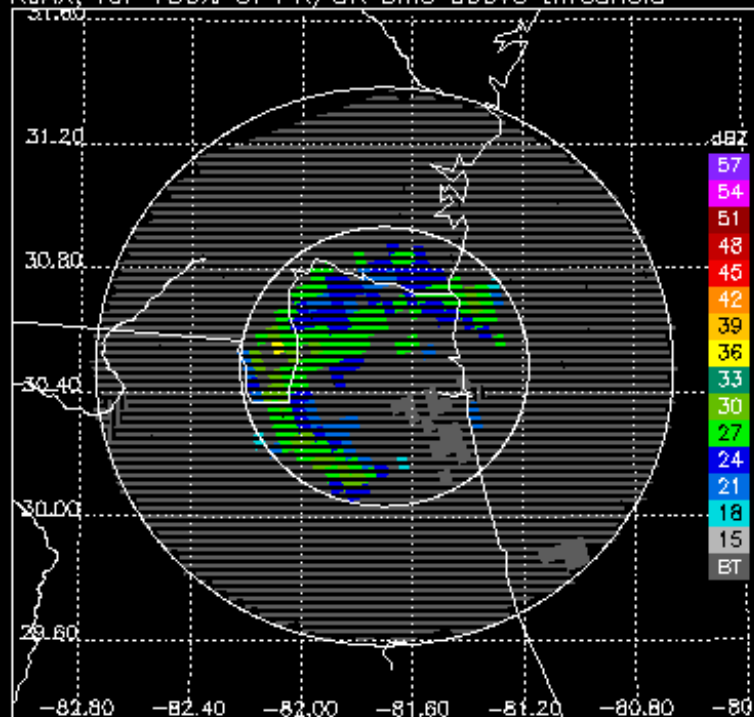
KJAX at 6.0 degrees, 2007-06-02 07:57:56



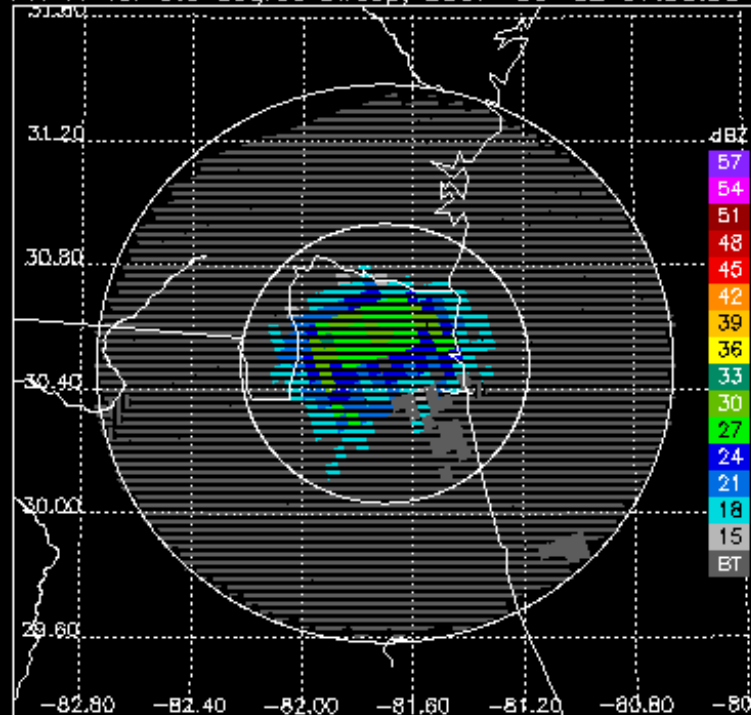
PR V7, for 100% of PR/GR bins above threshold



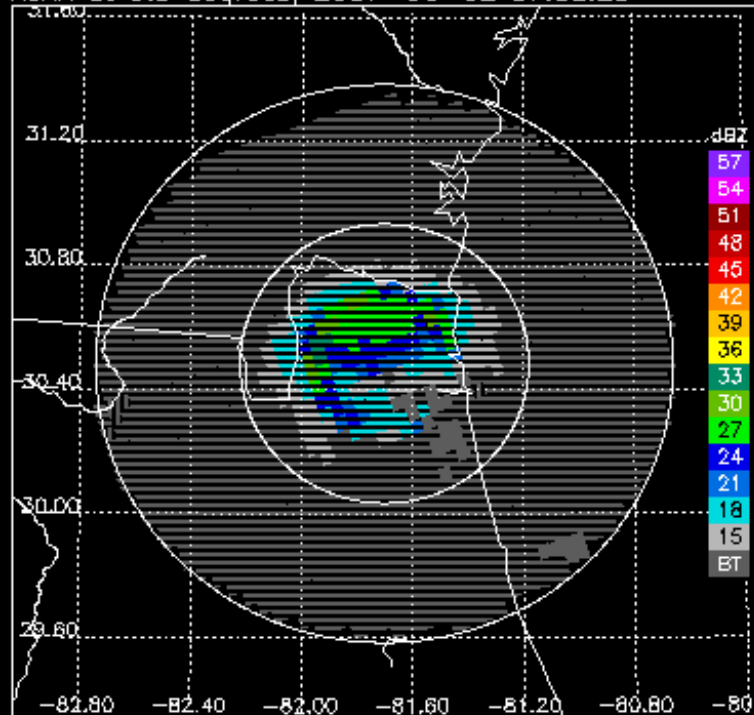
KJAX, for 100% of PR/GR bins above threshold



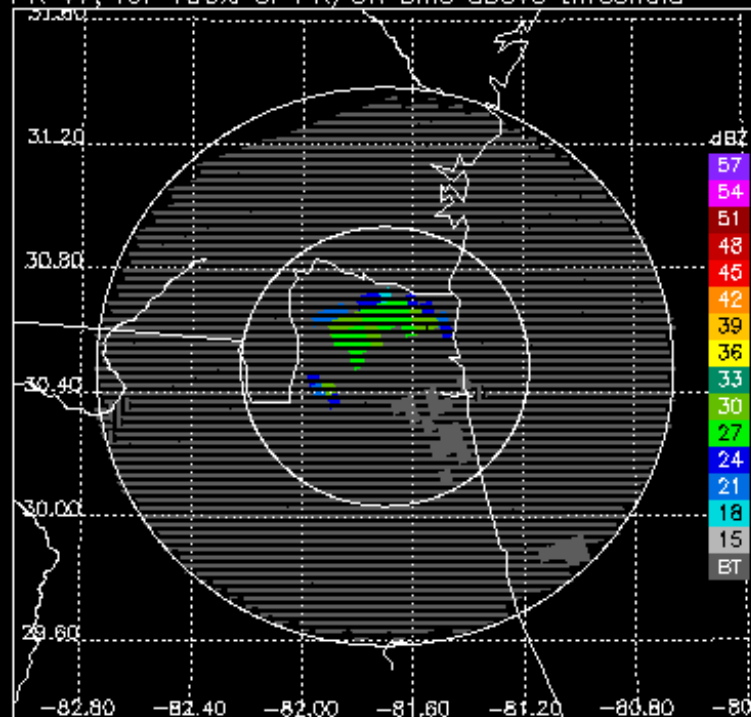
PR V7 for 9.9 degree sweep, 2007-06-02 07:55:38



KJAX at 9.9 degrees, 2007-06-02 07:58:29



PR V7, for 100% of PR/GR bins above threshold



KJAX, for 100% of PR/GR bins above threshold

