

PR-GV Reflectivity difference statistics (dBZ) - GV Site: KJGX Orbit: 86763 V7
 PR time = 2013-02-07 15:27:58 GV start time = 2013-02-07 15:27:48
 Required percent of above-threshold PR and GV bins in matched volumes = 100%

Statistics grouped by fixed height levels (km):

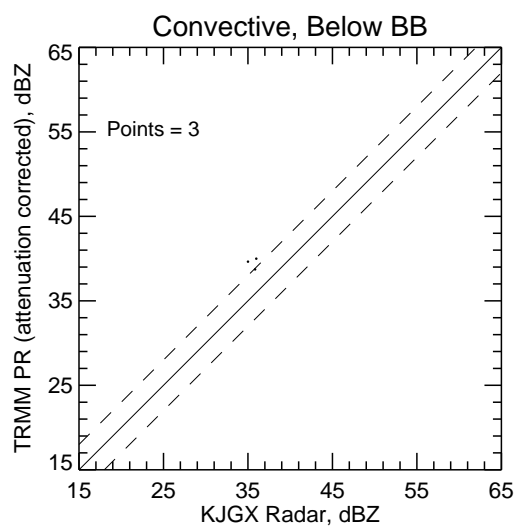
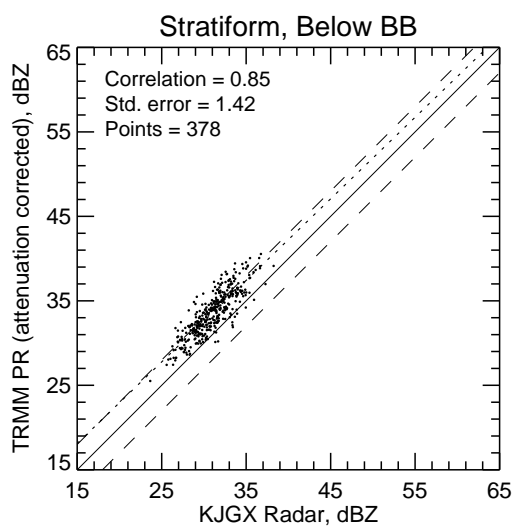
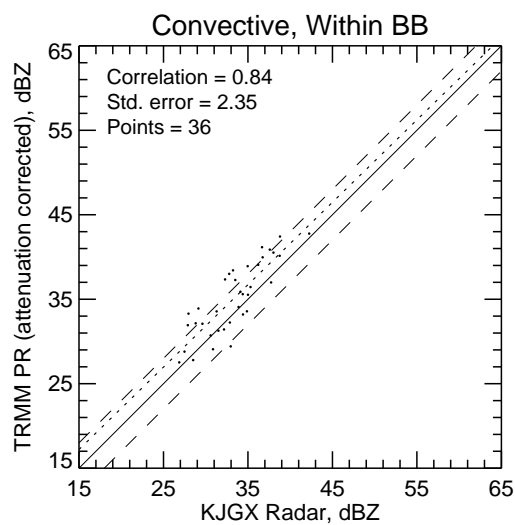
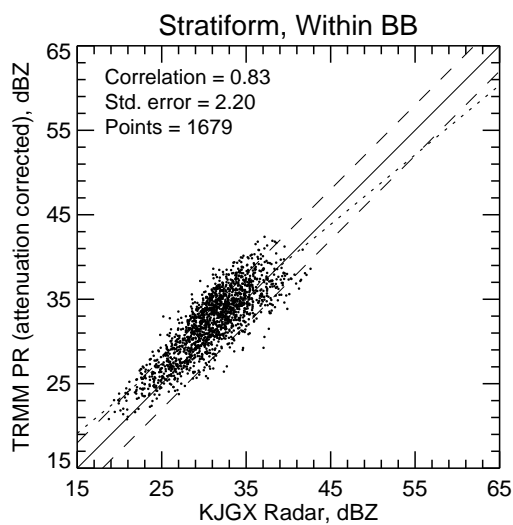
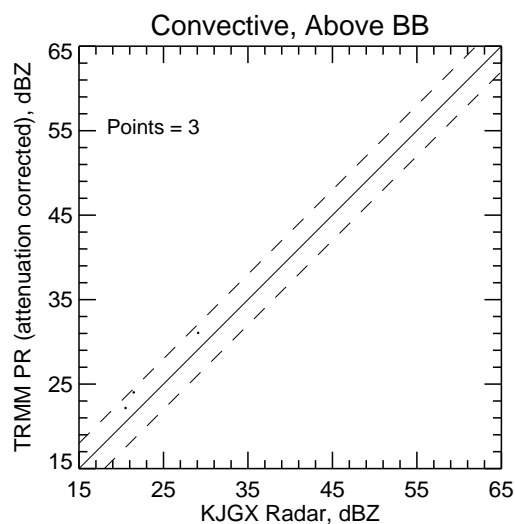
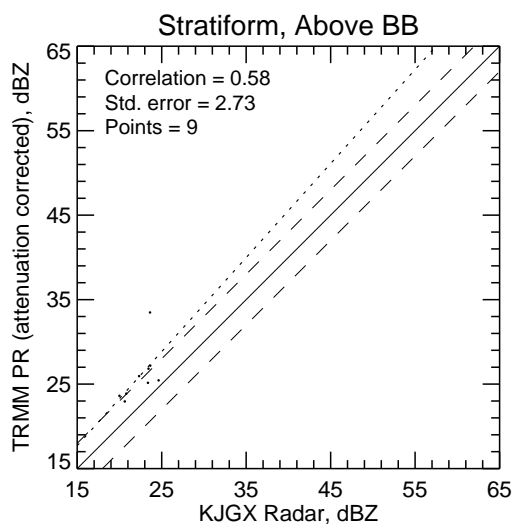
Vert.	Any Rain Type		Stratiform		Convective		Dataset Statistics			
Layer	PR-GV	NumPts	PR-GV	NumPts	PR-GV	NumPts	AvgDist	PR MaxZ	GV MaxZ	BB?
-----	-----	-----	-----	-----	-----	-----	-----	-----	-----	---
1.5	2.377	1060	2.371	1042	2.671	18	43.281	42.426	39.543	@ BB
3.0	0.265	851	0.246	833	1.020	18	62.266	42.772	42.621	@ BB
4.5	2.826	15	3.160	11	1.890	4	78.549	33.484	30.811	

Statistics grouped by proximity to Bright Band:

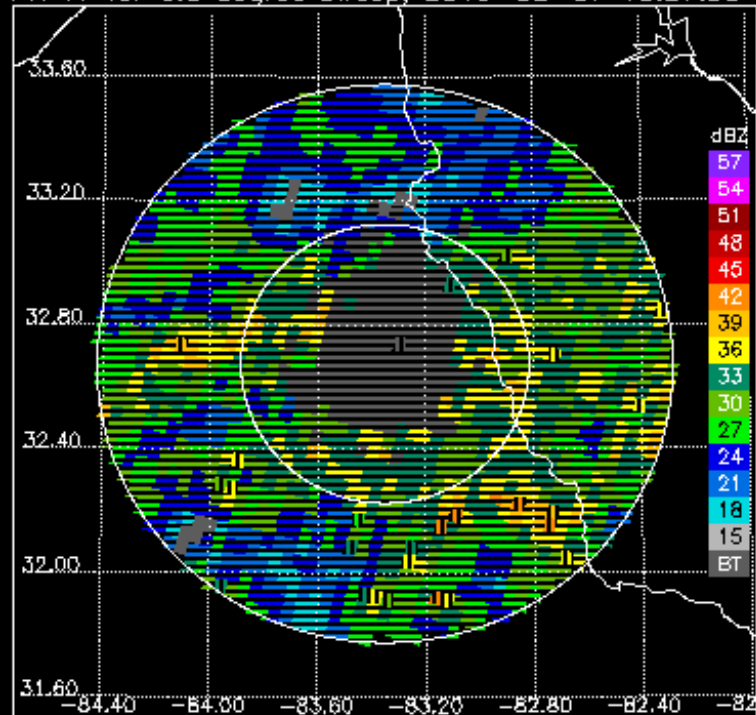
Proxim.	Any Rain Type		Stratiform		Convective		Dataset Statistics			
to BB	PR-GV	NumPts	PR-GV	NumPts	PR-GV	NumPts	AvgDist	PR MaxZ	GV MaxZ	BB?
-----	-----	-----	-----	-----	-----	-----	-----	-----	-----	---
Below	2.544	381	2.540	378	3.840	3	26.415	40.546	38.250	
Within	1.249	1715	1.237	1679	1.750	36	57.146	42.772	42.621	@ BB
Above	3.306	12	3.702	9	2.087	3	78.529	33.484	29.101	

KJGX.130207.86763.V7

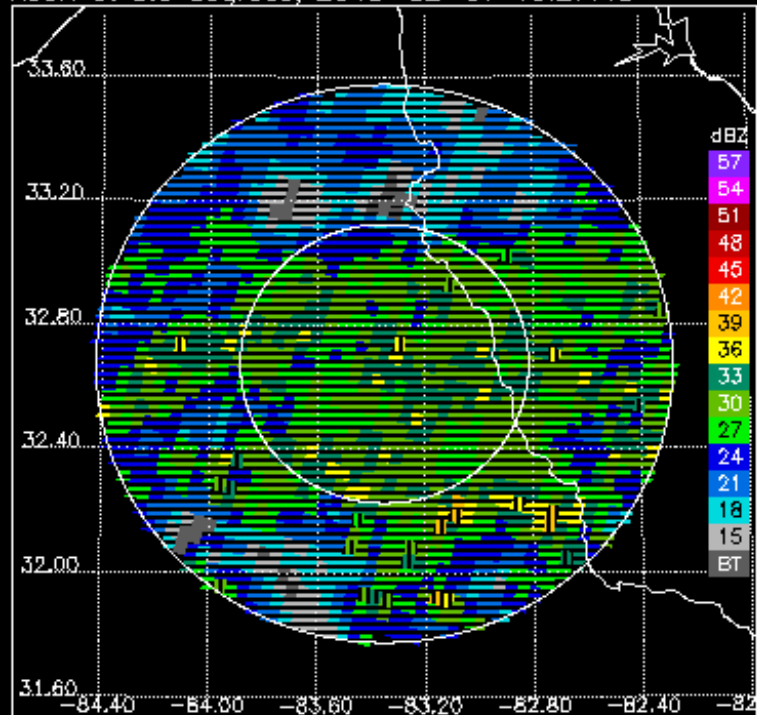
100% bins above threshold



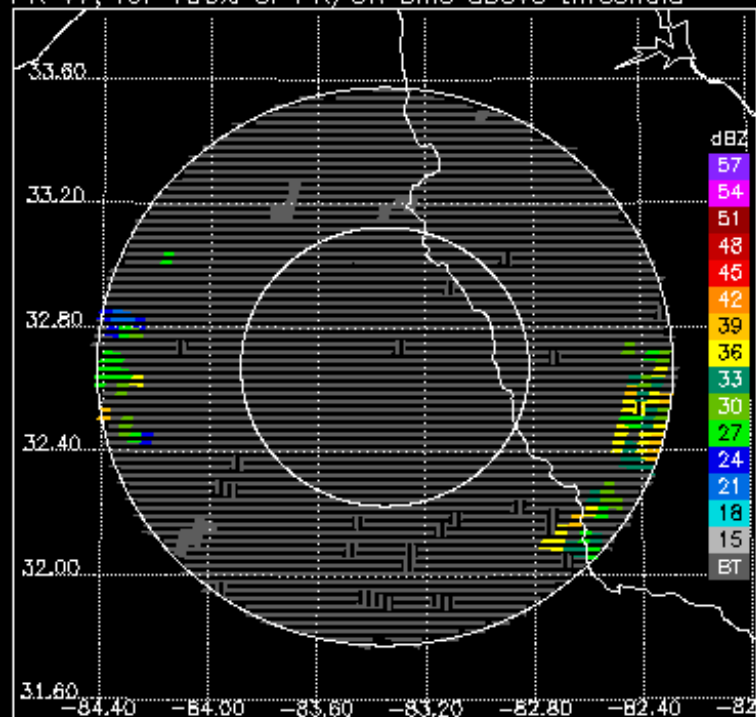
PR V7 for 0.5 degree sweep, 2013-02-07 15:27:58



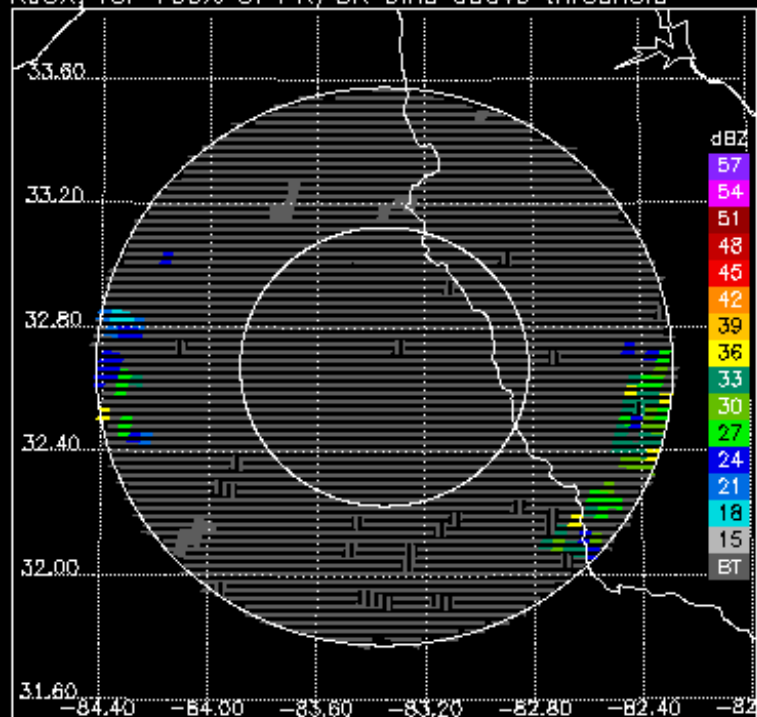
KJGX at 0.5 degrees, 2013-02-07 15:27:48



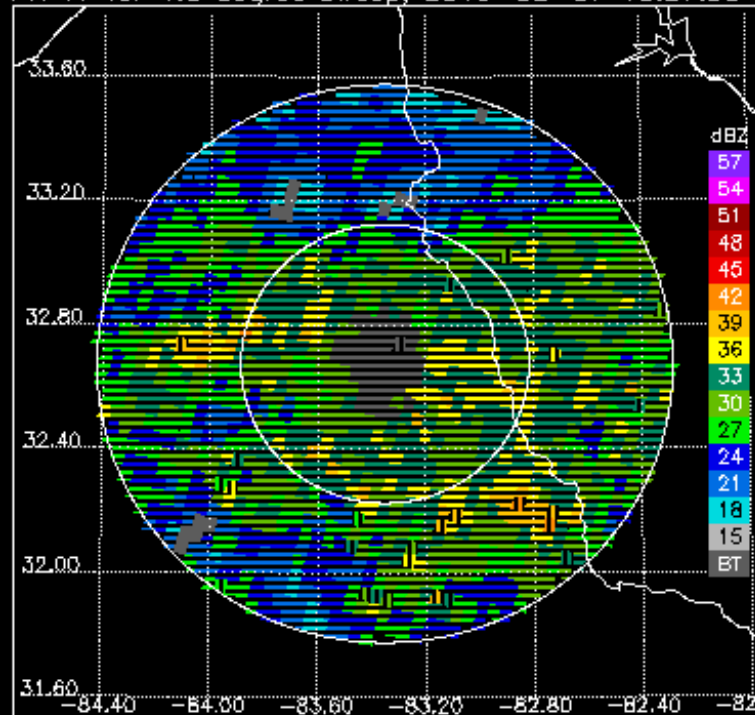
PR V7, for 100% of PR/GR bins above threshold



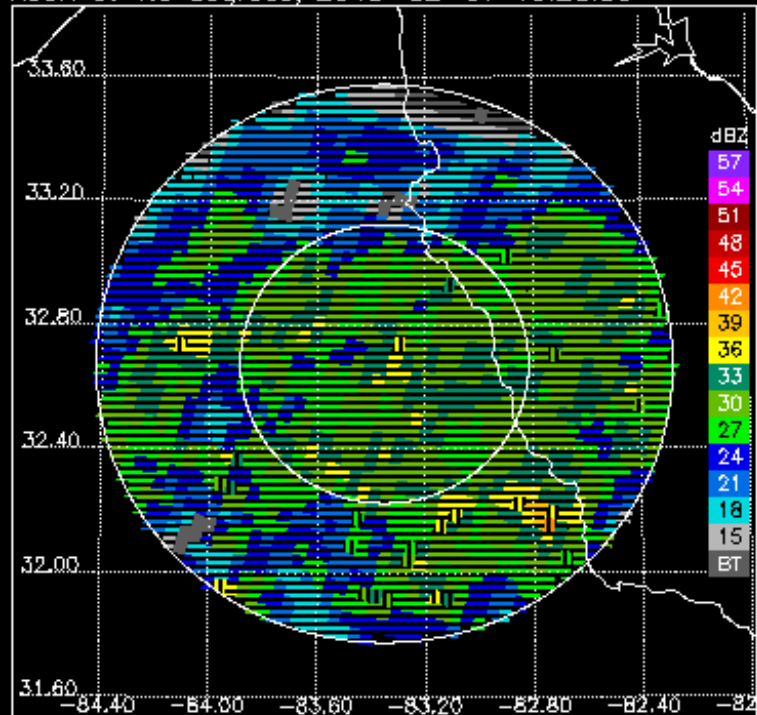
KJGX, for 100% of PR/GR bins above threshold



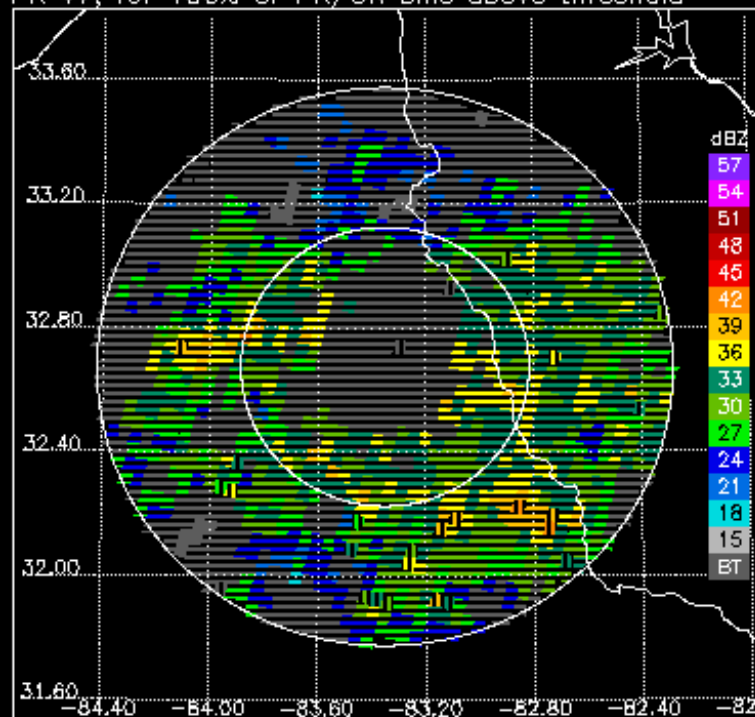
PR V7 for 1.5 degree sweep, 2013-02-07 15:27:58



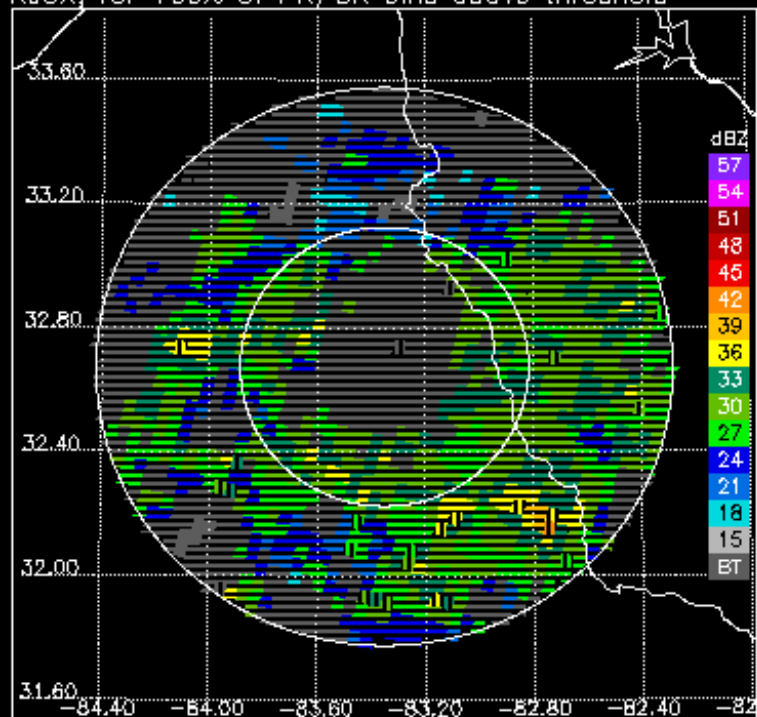
KJGX at 1.5 degrees, 2013-02-07 15:28:53



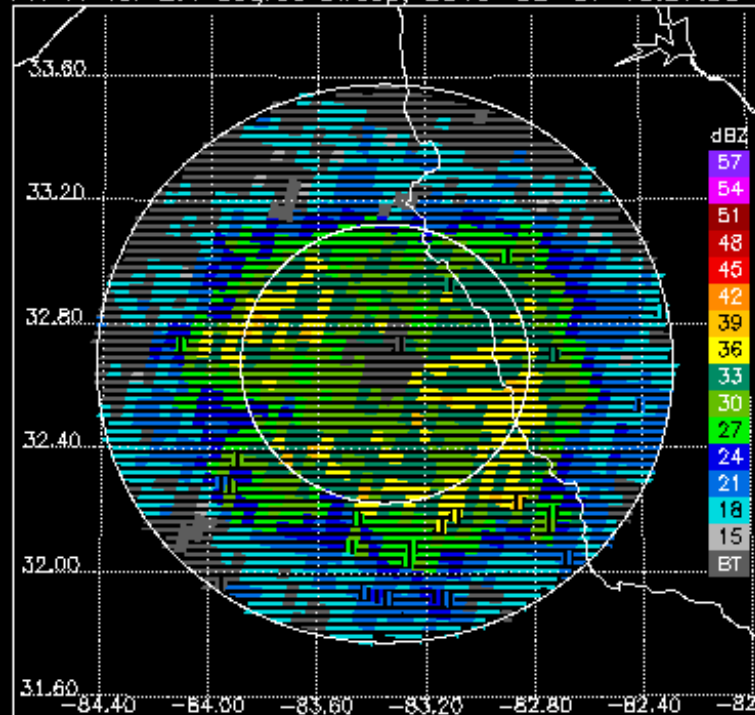
PR V7, for 100% of PR/GR bins above threshold



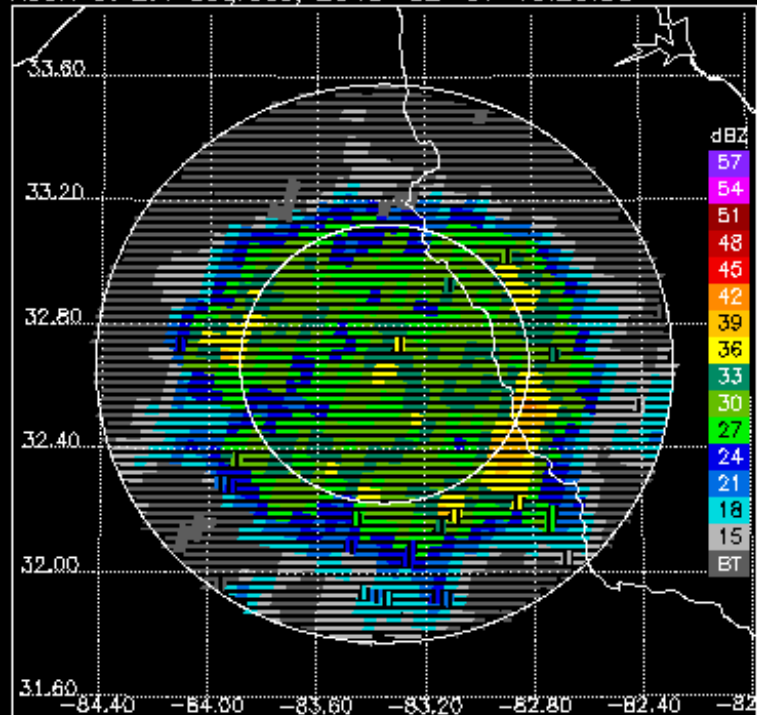
KJGX, for 100% of PR/GR bins above threshold



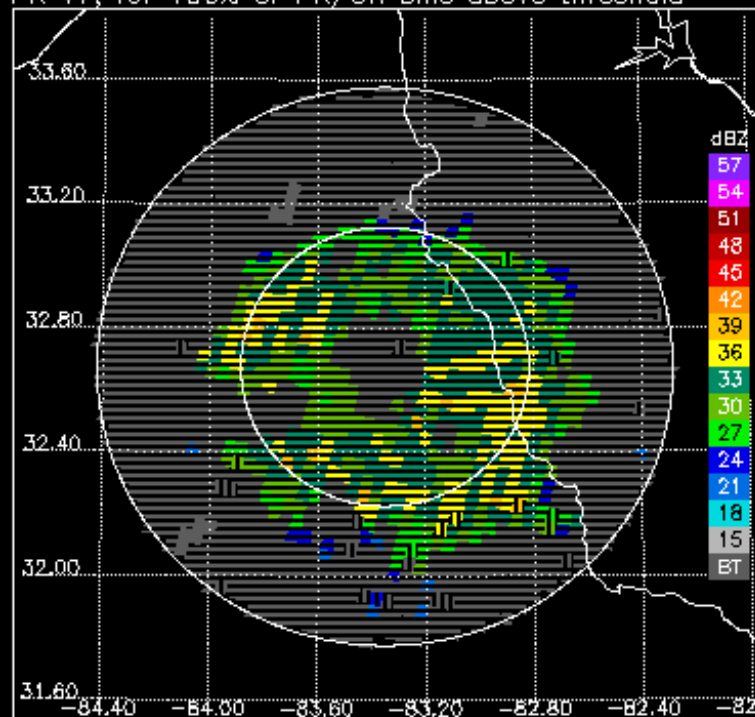
PR V7 for 2.4 degree sweep, 2013-02-07 15:27:58



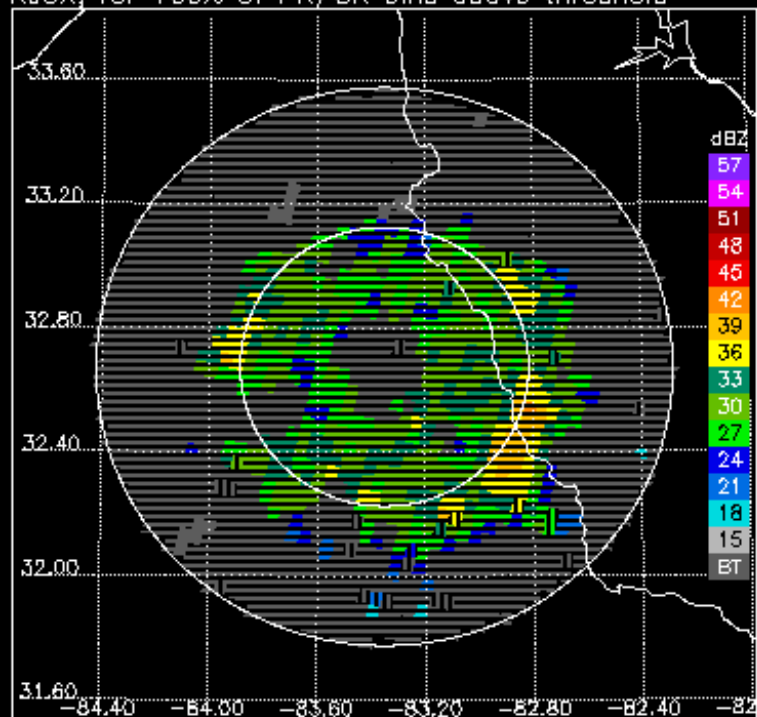
KJGX at 2.4 degrees, 2013-02-07 15:29:58



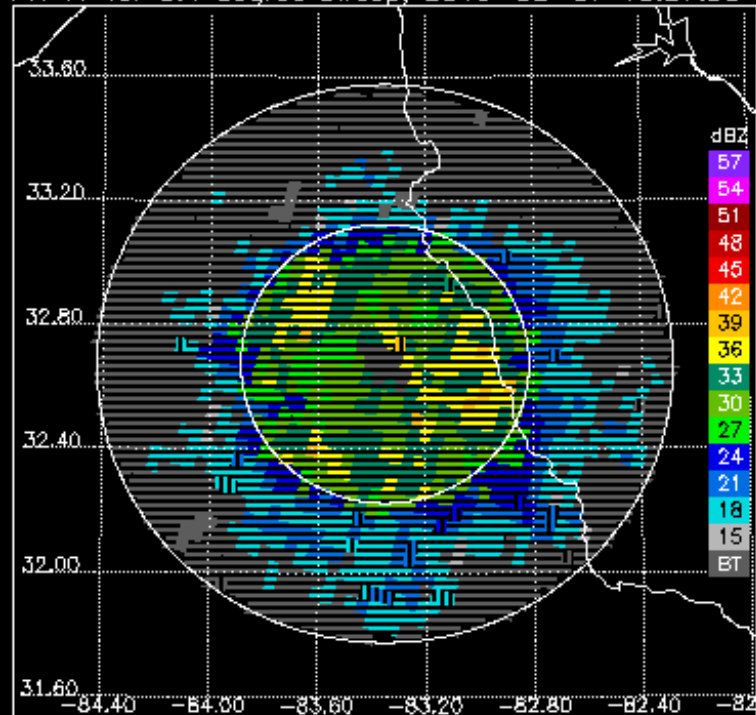
PR V7, for 100% of PR/GR bins above threshold



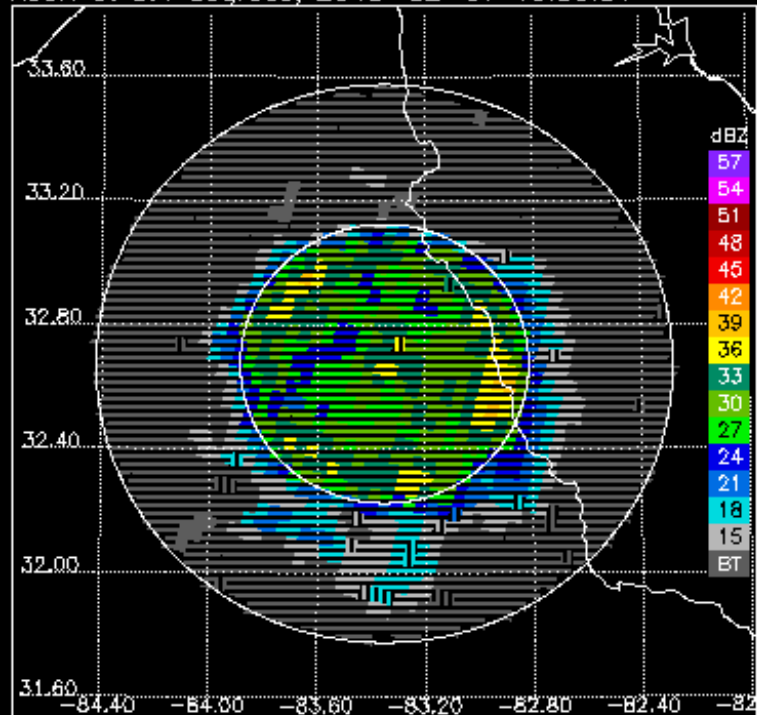
KJGX, for 100% of PR/GR bins above threshold



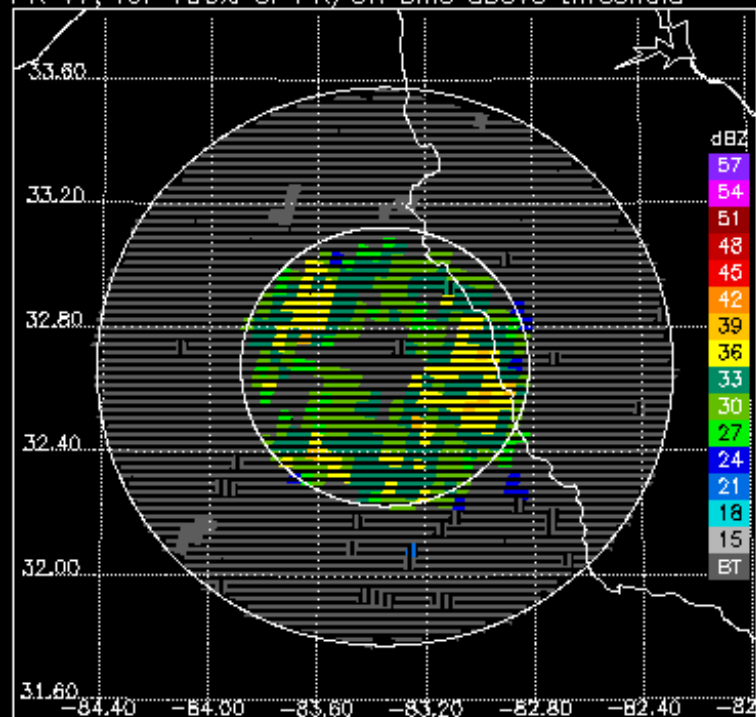
PR V7 for 3.4 degree sweep, 2013-02-07 15:27:58



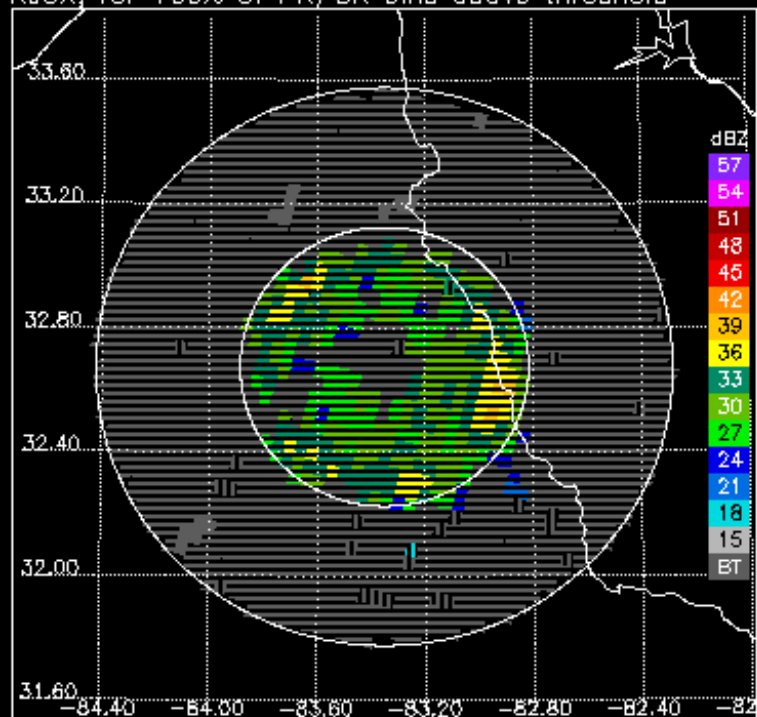
KJGX at 3.4 degrees, 2013-02-07 15:30:31



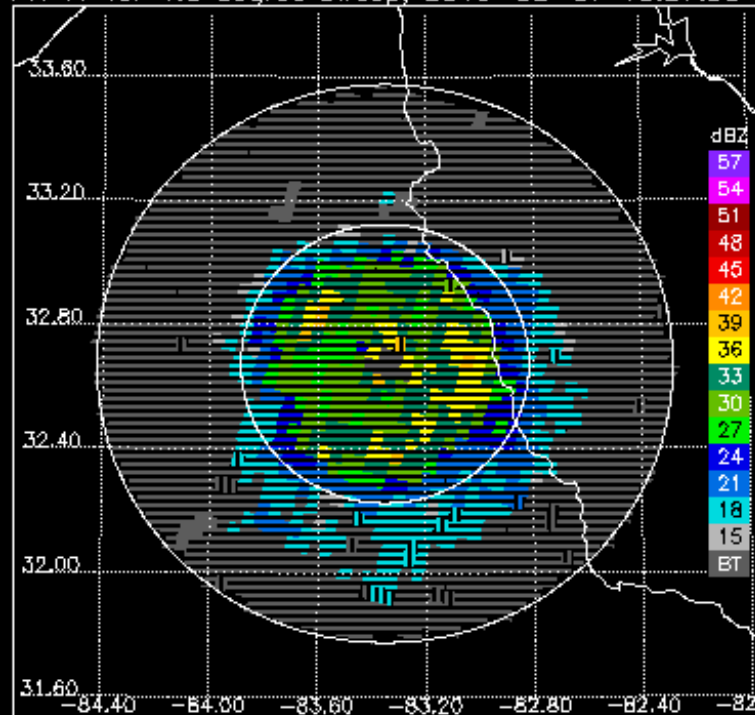
PR V7, for 100% of PR/GR bins above threshold



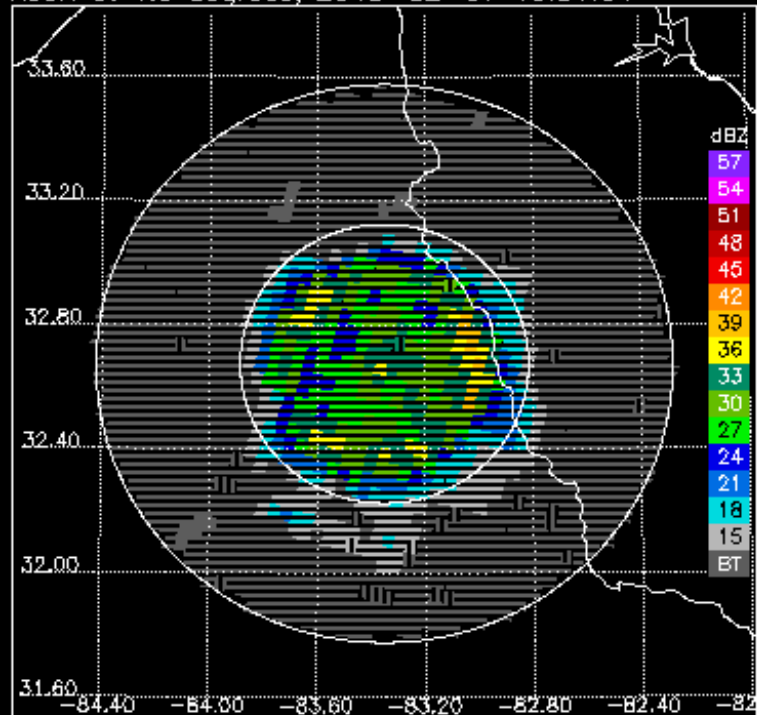
KJGX, for 100% of PR/GR bins above threshold



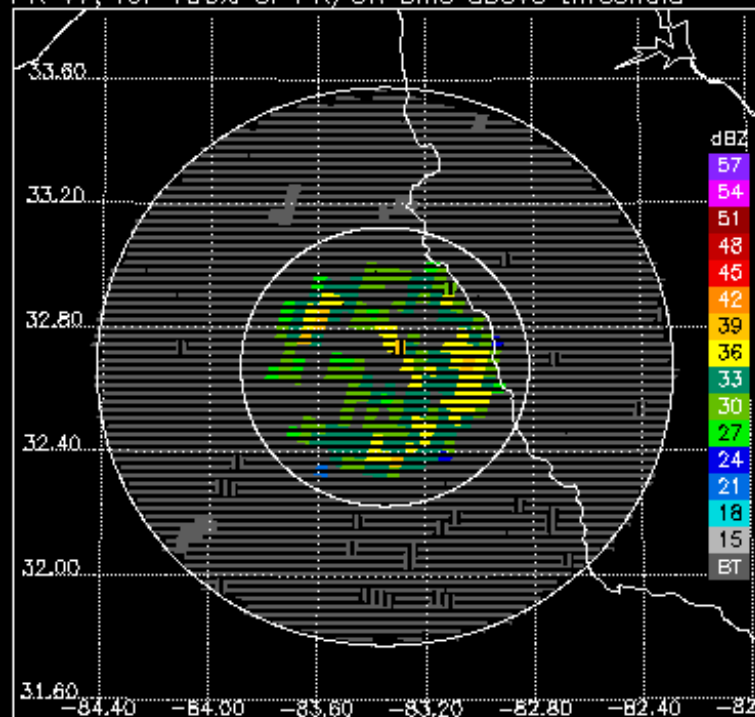
PR V7 for 4.3 degree sweep, 2013-02-07 15:27:58



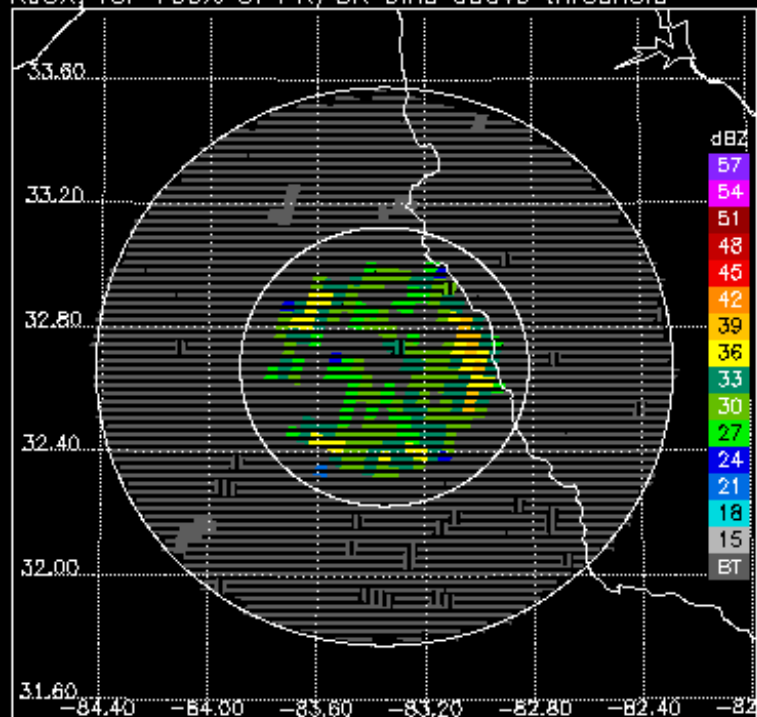
KJGX at 4.3 degrees, 2013-02-07 15:31:04



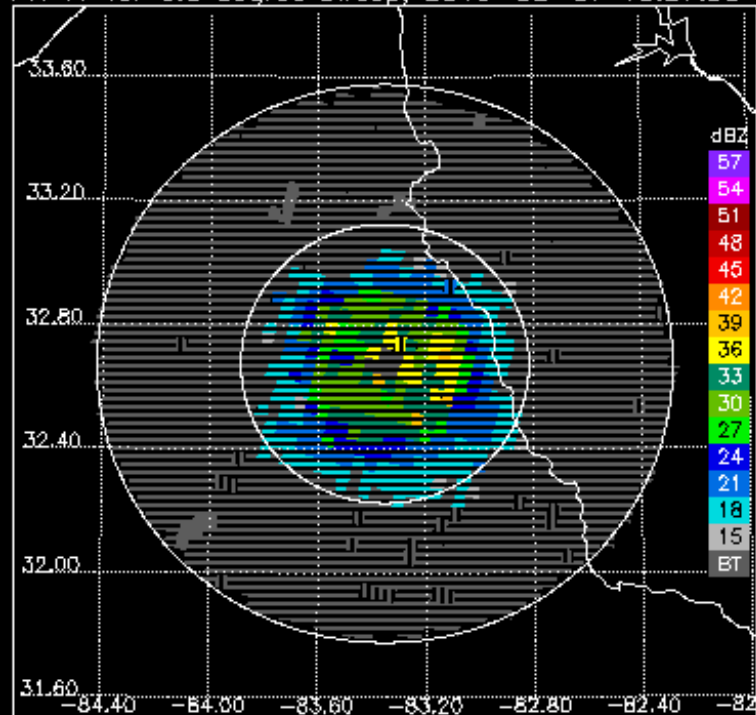
PR V7, for 100% of PR/GR bins above threshold



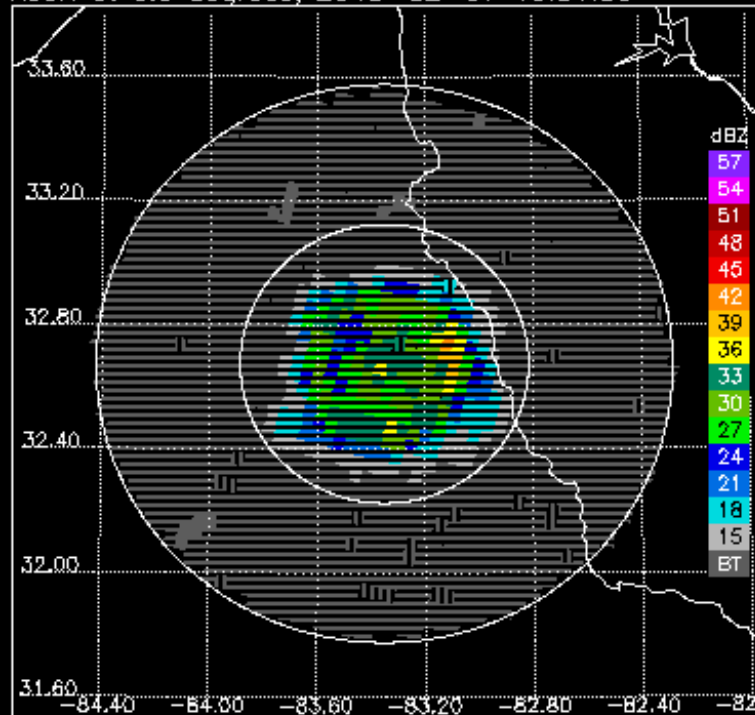
KJGX, for 100% of PR/GR bins above threshold



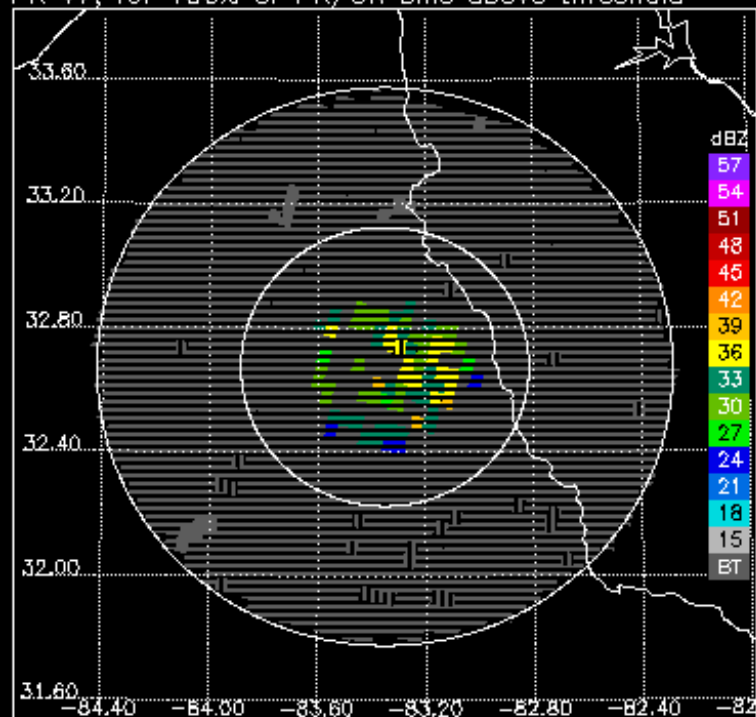
PR V7 for 6.0 degree sweep, 2013-02-07 15:27:58



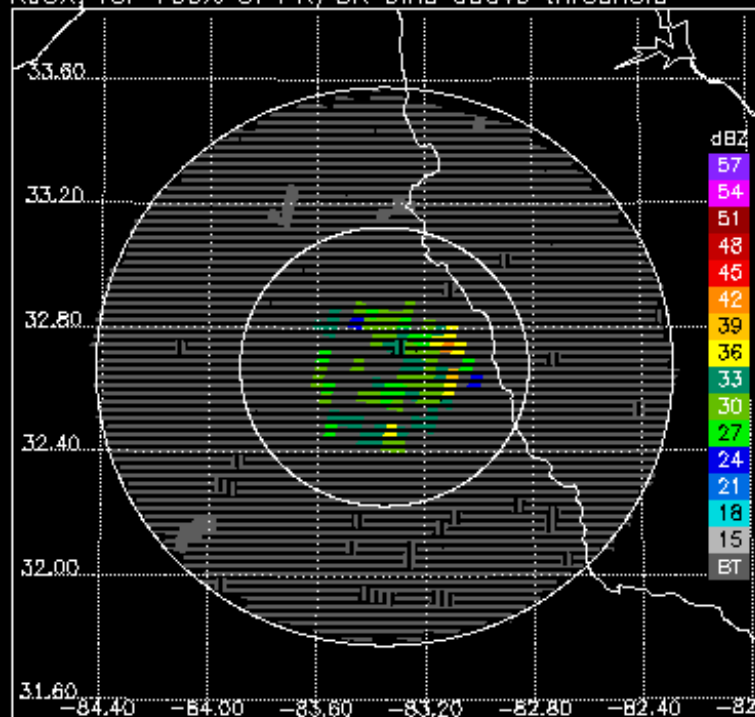
KJGX at 6.0 degrees, 2013-02-07 15:31:39



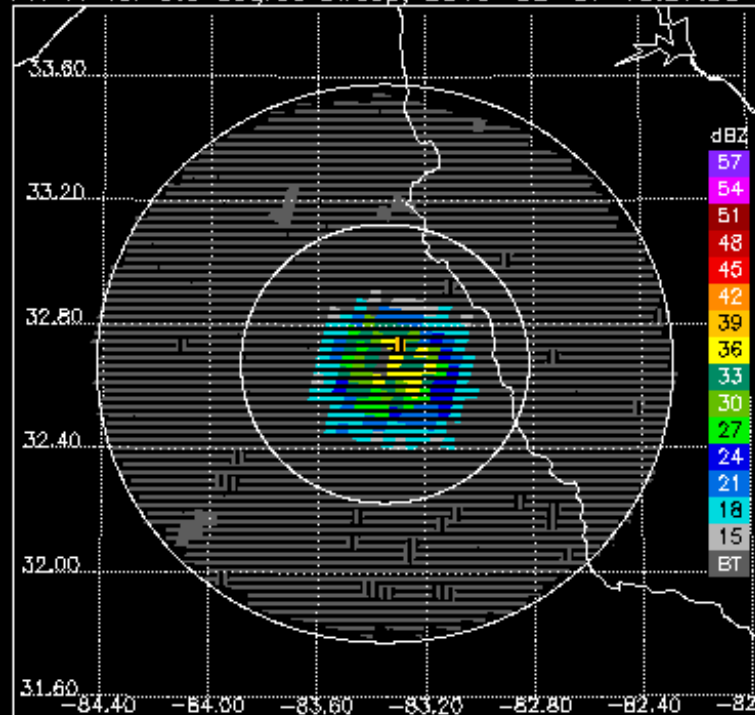
PR V7, for 100% of PR/GR bins above threshold



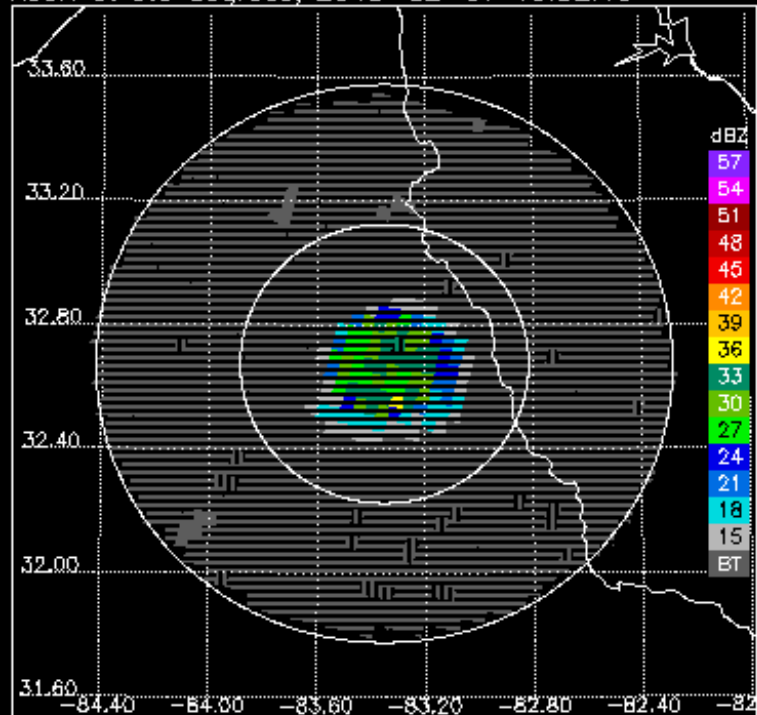
KJGX, for 100% of PR/GR bins above threshold



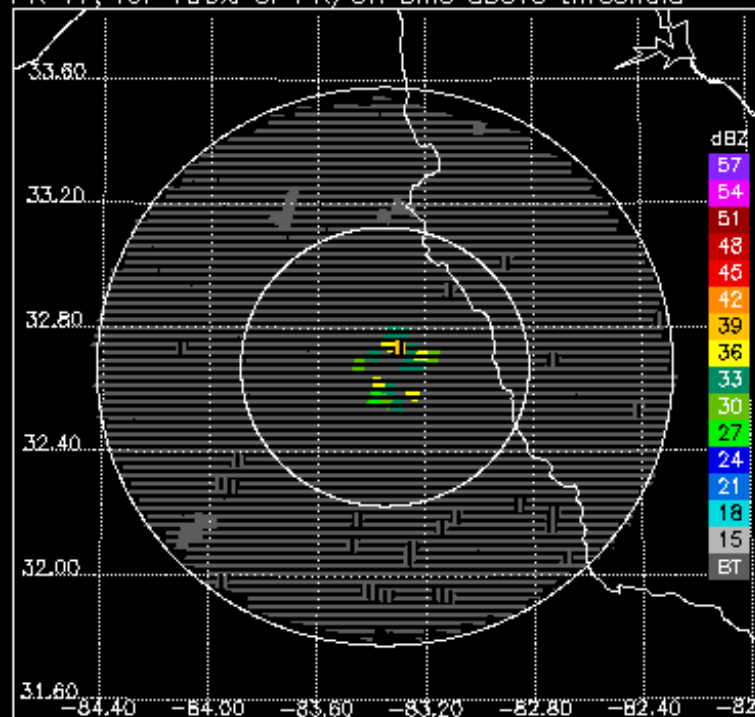
PR V7 for 9.9 degree sweep, 2013-02-07 15:27:58



KJGX at 9.9 degrees, 2013-02-07 15:32:13



PR V7, for 100% of PR/GR bins above threshold



KJGX, for 100% of PR/GR bins above threshold

