

PR-GV Reflectivity difference statistics (dBZ) - GV Site: KJGX Orbit: 87053 V7
 PR time = 2013-02-26 06:00:04 GV start time = 2013-02-26 05:59:15
 Required percent of above-threshold PR and GV bins in matched volumes = 100%

Statistics grouped by fixed height levels (km):

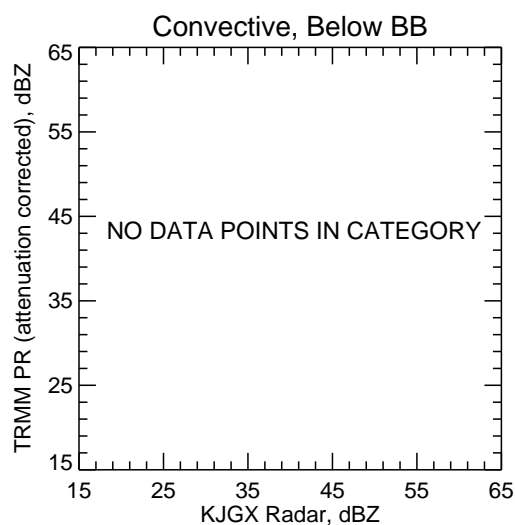
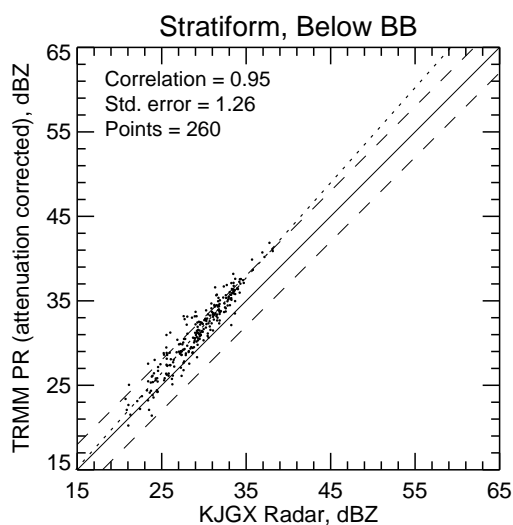
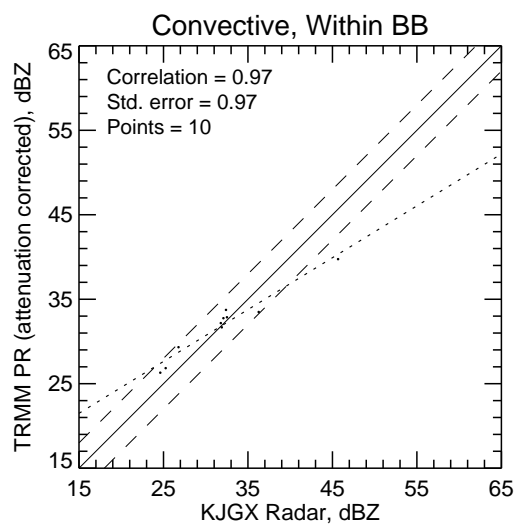
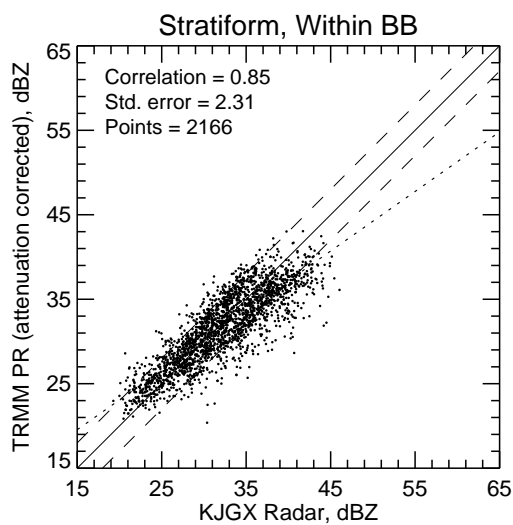
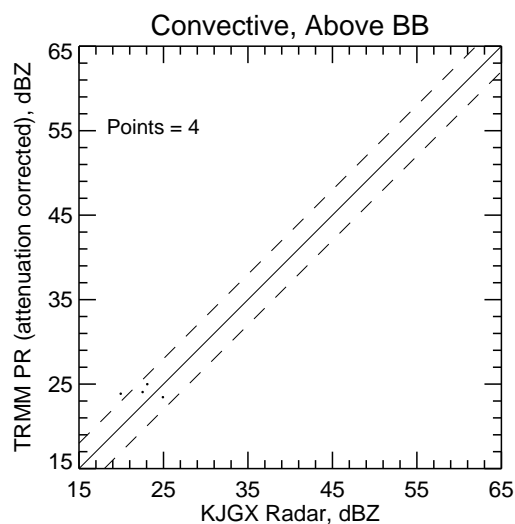
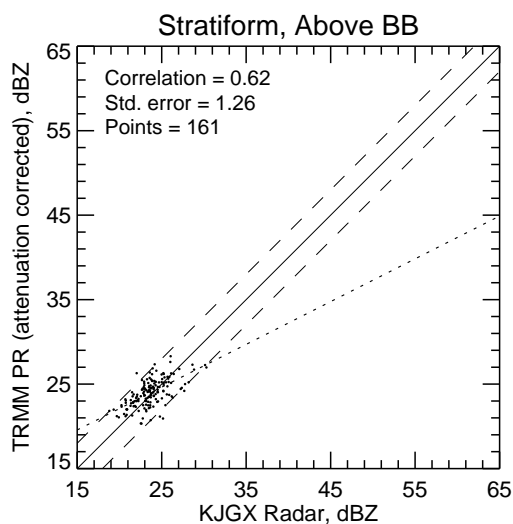
Vert.	Any Rain Type		Stratiform		Convective		Dataset Statistics			
Layer	PR-GV	NumPts	PR-GV	NumPts	PR-GV	NumPts	AvgDist	PR MaxZ	GV MaxZ	BB?
-----	-----	-----	-----	-----	-----	-----	-----	-----	-----	---
1.5	1.615	776	1.616	775	0.661	1	51.793	42.203	42.622	@ BB
3.0	-1.411	1452	-1.420	1444	-0.262	8	66.498	43.053	46.048	@ BB
4.5	0.746	279	0.719	275	2.321	4	71.195	32.304	33.901	
6.0	-0.204	18	-0.131	17	-1.477	1	70.548	25.253	26.302	

Statistics grouped by proximity to Bright Band:

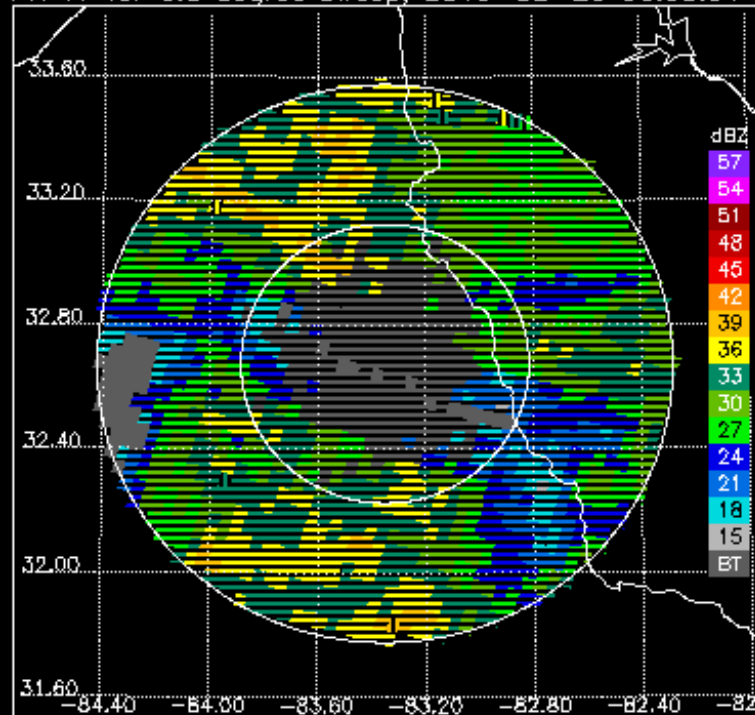
Proxim.	Any Rain Type		Stratiform		Convective		Dataset Statistics			
to BB	PR-GV	NumPts	PR-GV	NumPts	PR-GV	NumPts	AvgDist	PR MaxZ	GV MaxZ	BB?
-----	-----	-----	-----	-----	-----	-----	-----	-----	-----	---
Below	1.961	260	1.961	260	-99.999	0	39.095	41.866	38.147	
Within	-0.514	2176	-0.517	2166	-0.007	10	64.927	43.053	46.048	@ BB
Above	0.528	165	0.495	161	1.666	4	69.182	28.302	30.298	

KJGX.130226.87053.V7

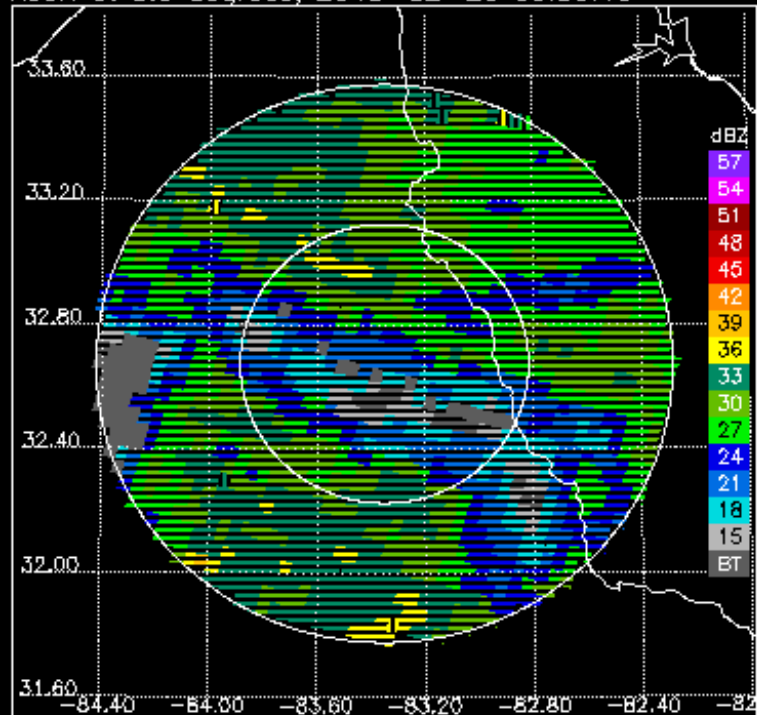
100% bins above threshold



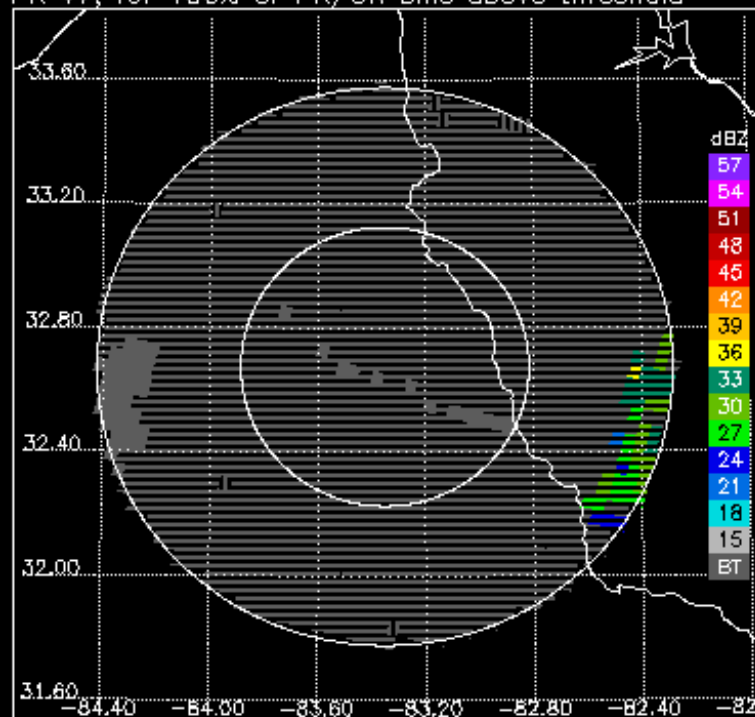
PR V7 for 0.5 degree sweep, 2013-02-26 06:00:04



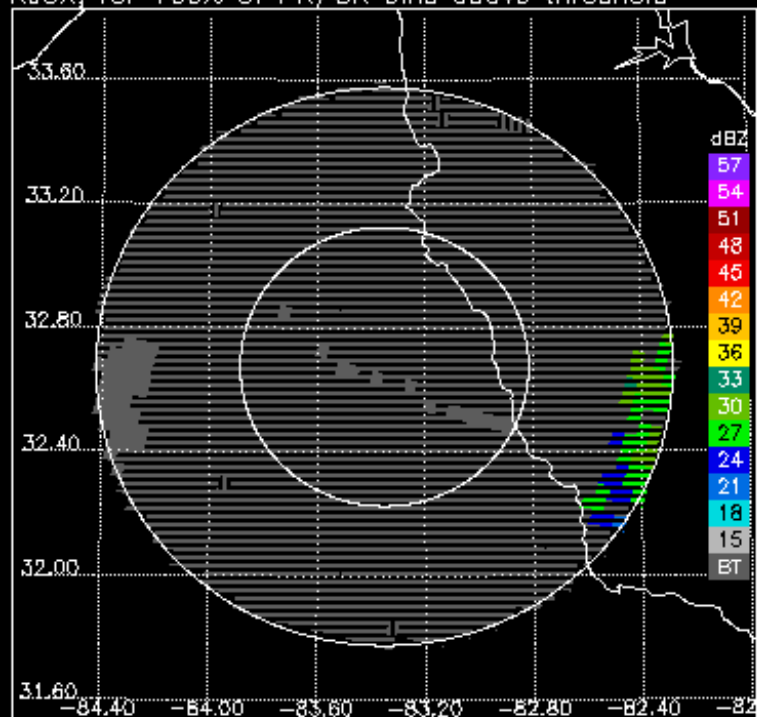
KJGX at 0.5 degrees, 2013-02-26 05:59:15



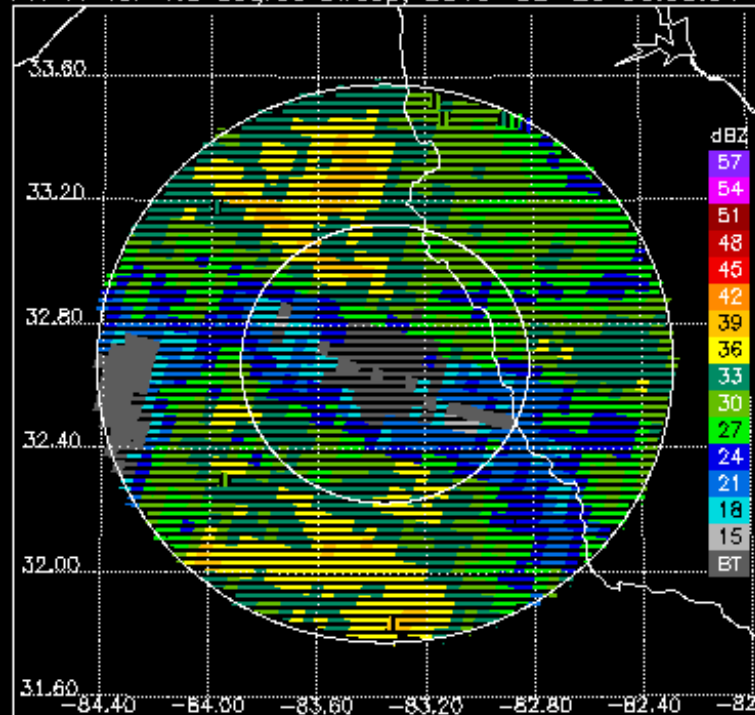
PR V7, for 100% of PR/GR bins above threshold



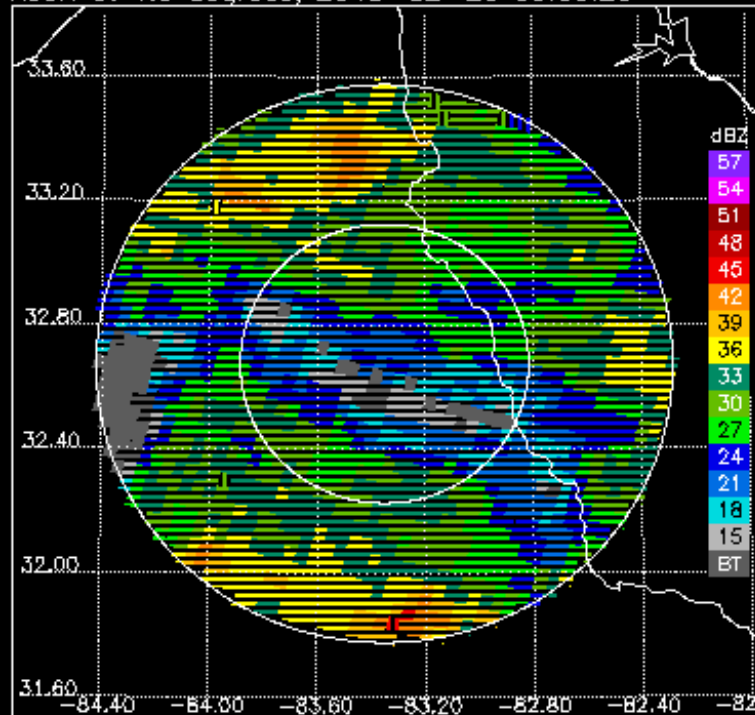
KJGX, for 100% of PR/GR bins above threshold



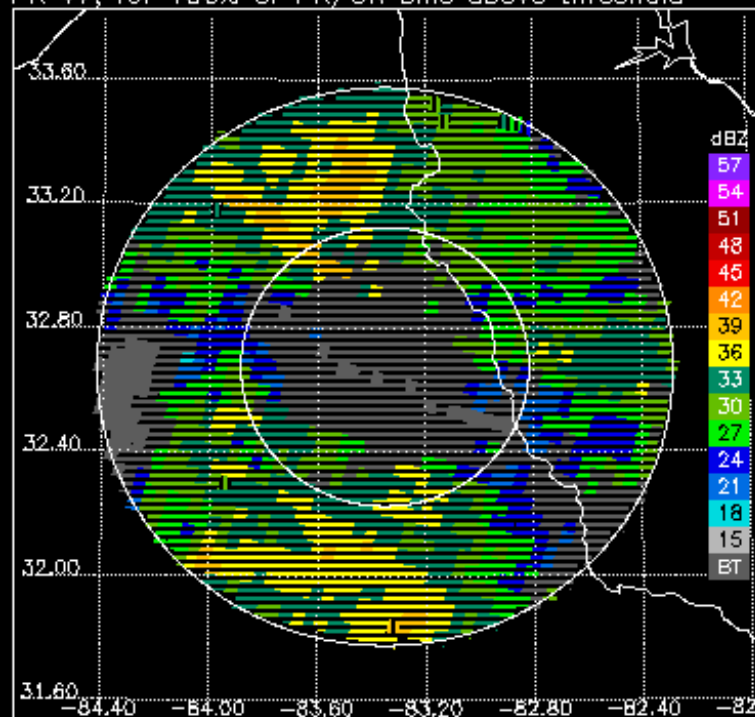
PR V7 for 1.5 degree sweep, 2013-02-26 06:00:04



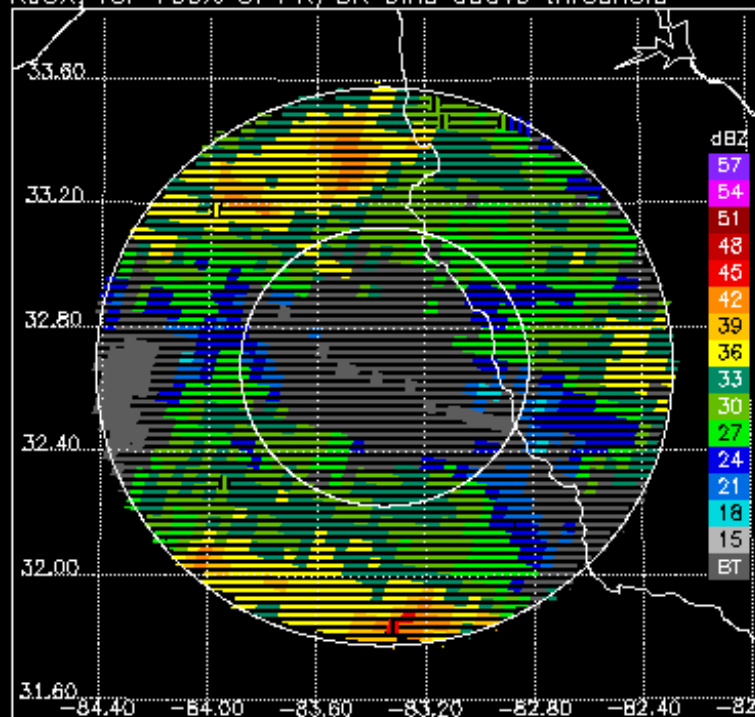
KJGX at 1.5 degrees, 2013-02-26 06:00:20



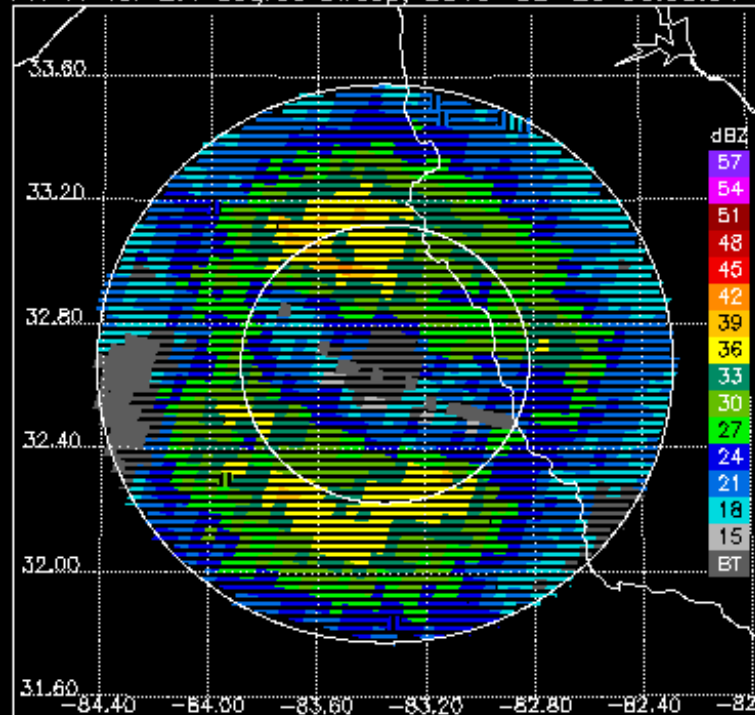
PR V7, for 100% of PR/GR bins above threshold



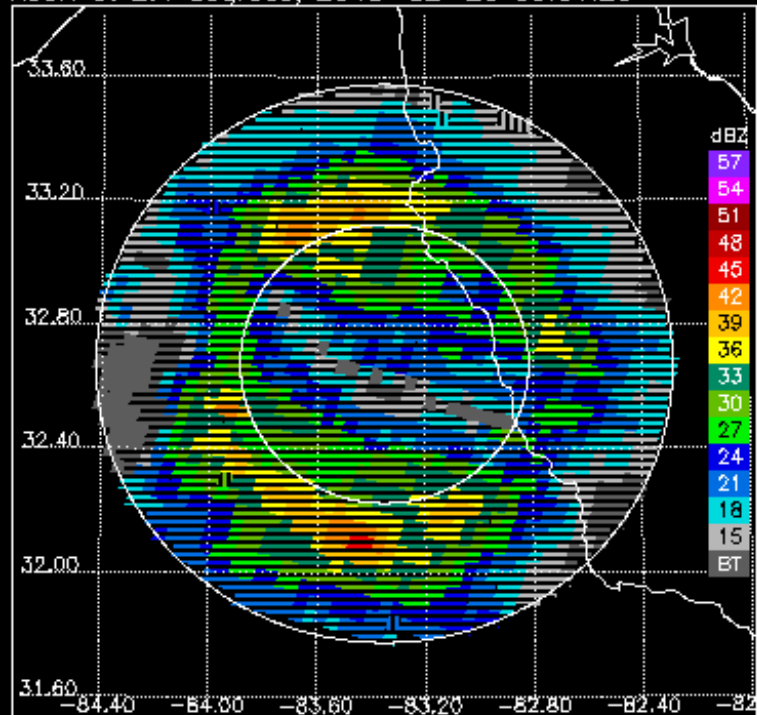
KJGX, for 100% of PR/GR bins above threshold



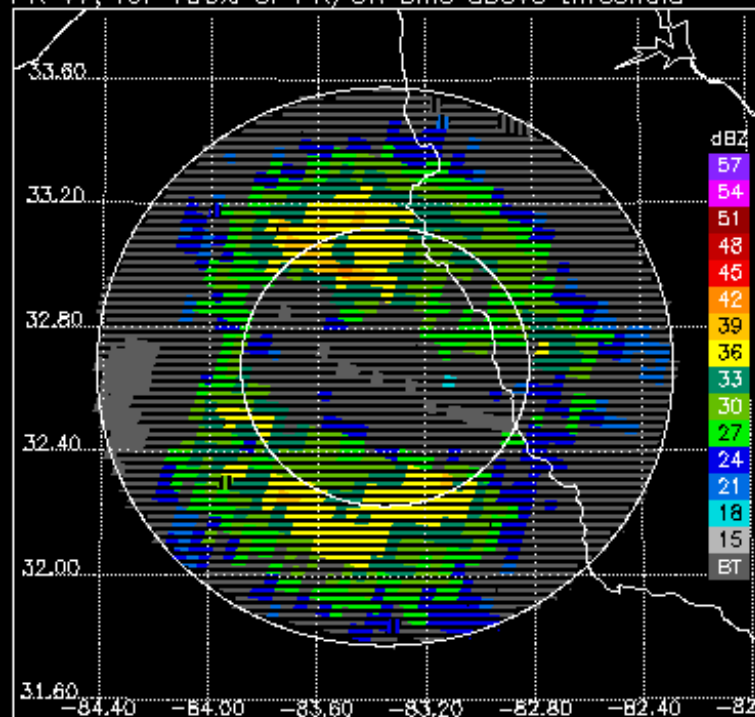
PR V7 for 2.4 degree sweep, 2013-02-26 06:00:04



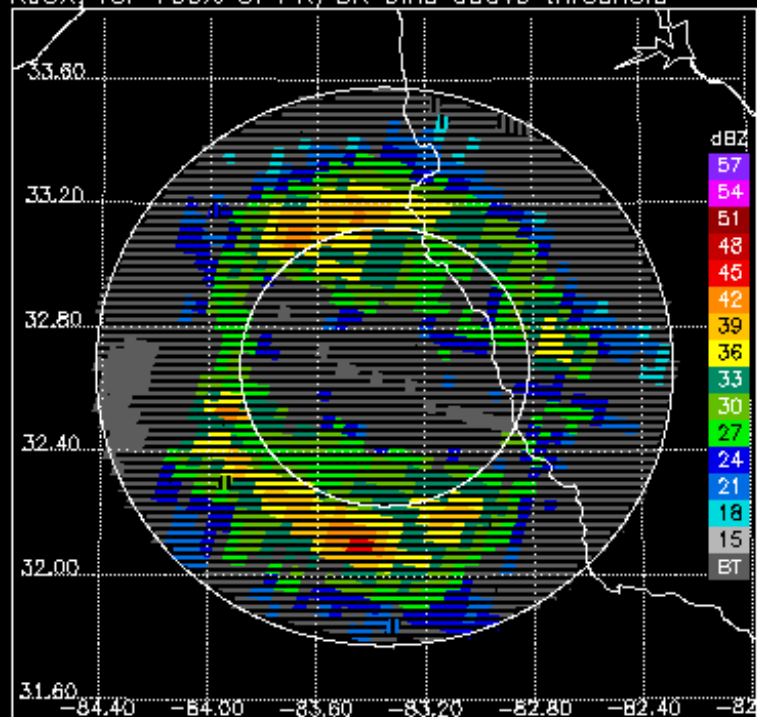
KJGX at 2.4 degrees, 2013-02-26 06:01:25



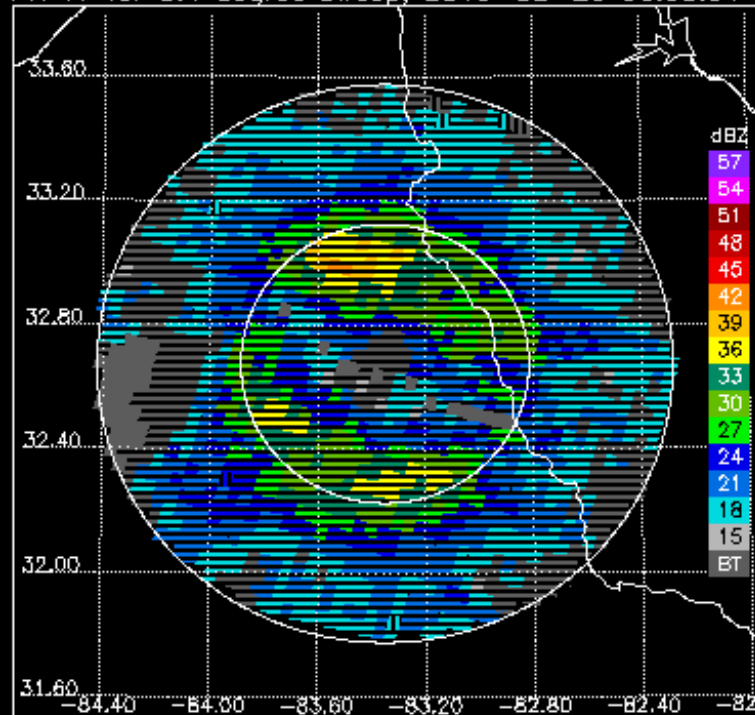
PR V7, for 100% of PR/GR bins above threshold



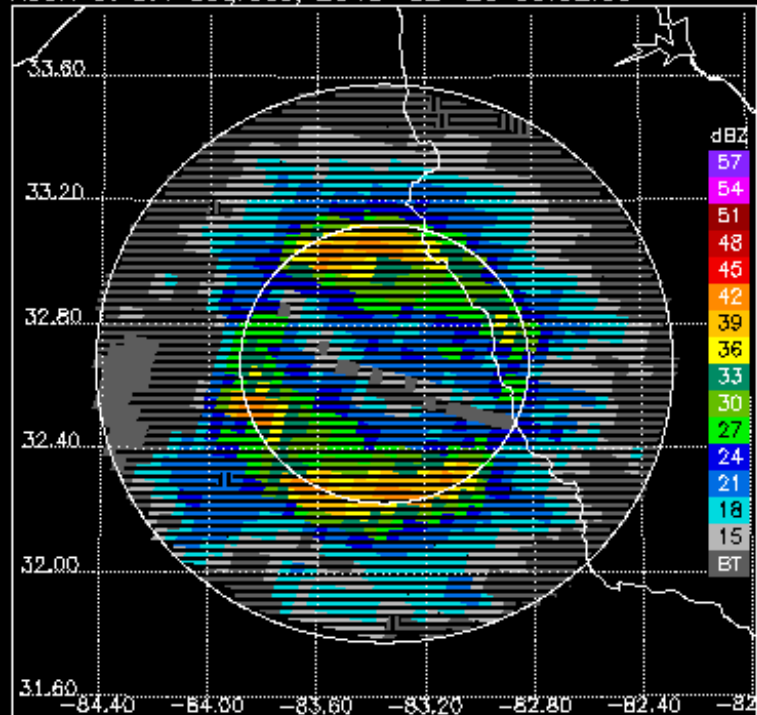
KJGX, for 100% of PR/GR bins above threshold



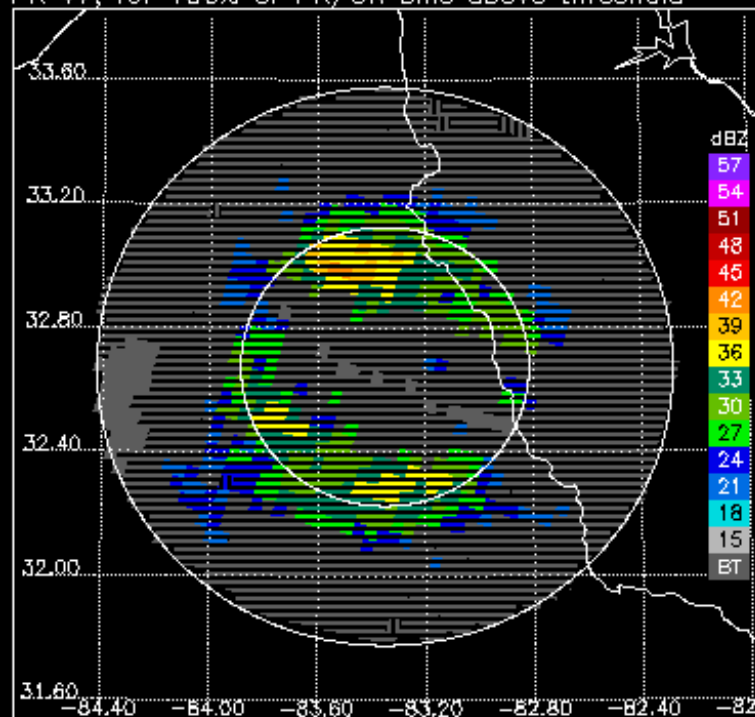
PR V7 for 3.4 degree sweep, 2013-02-26 06:00:04



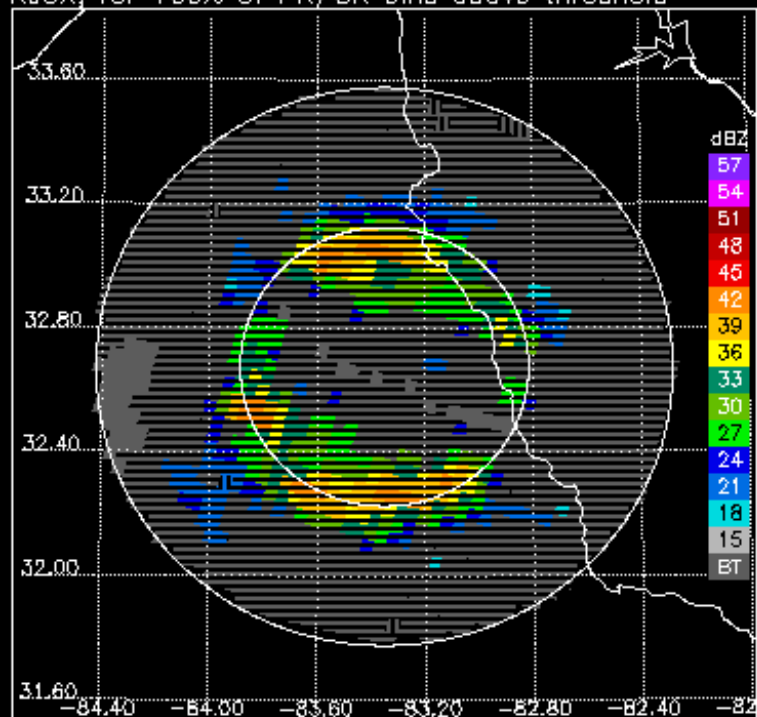
KJGX at 3.4 degrees, 2013-02-26 06:02:00



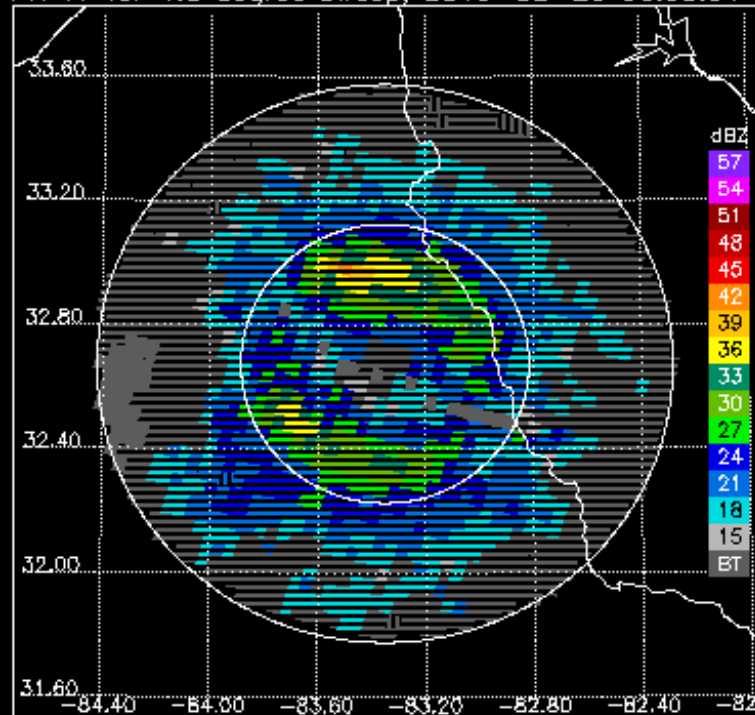
PR V7, for 100% of PR/GR bins above threshold



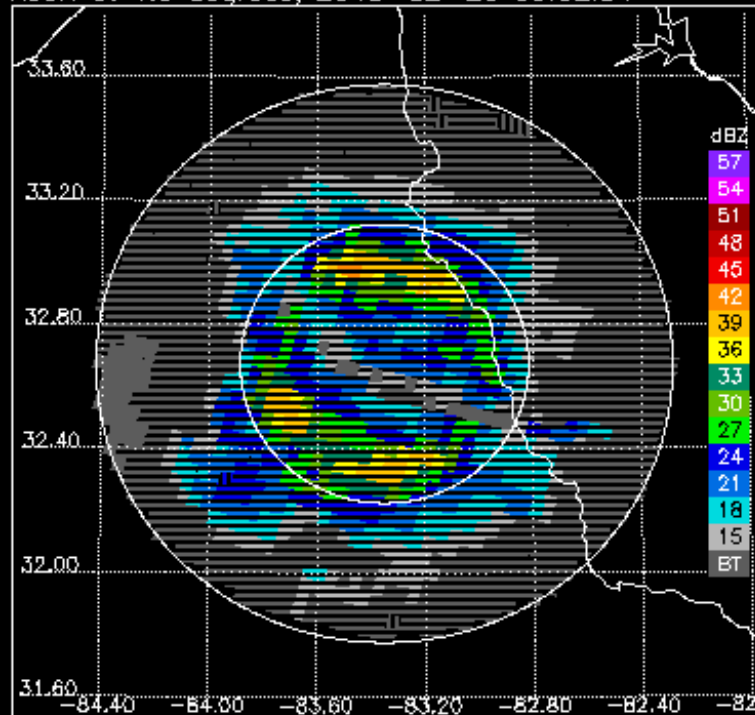
KJGX, for 100% of PR/GR bins above threshold



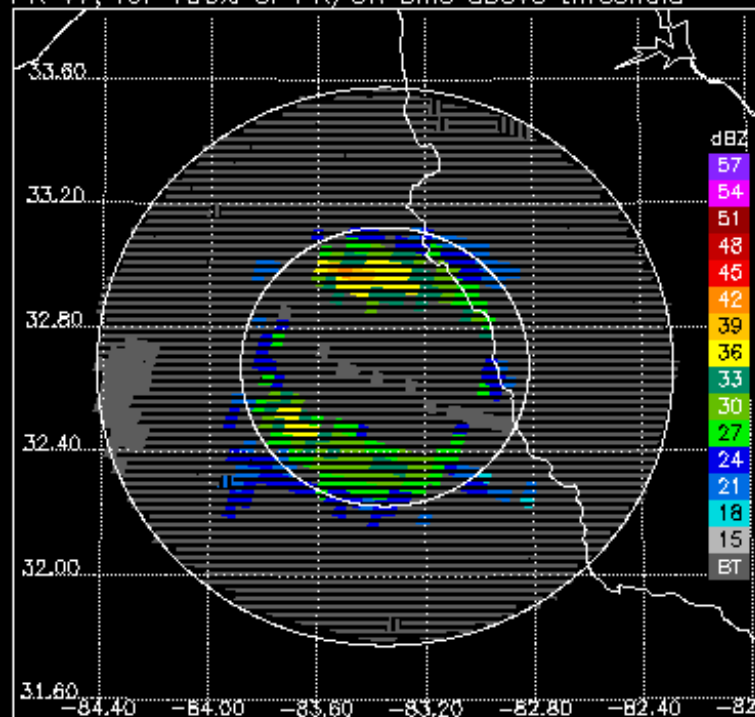
PR V7 for 4.3 degree sweep, 2013-02-26 06:00:04



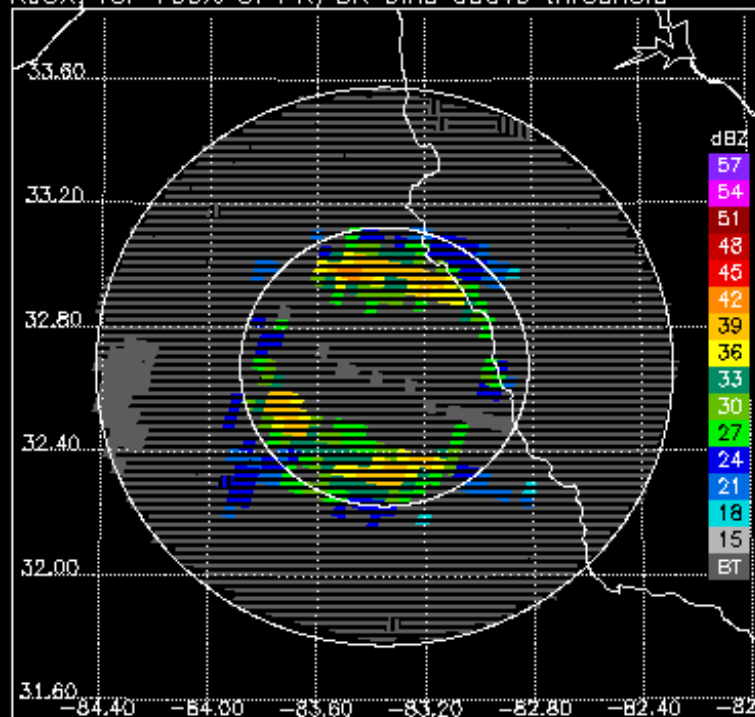
KJGX at 4.3 degrees, 2013-02-26 06:02:34



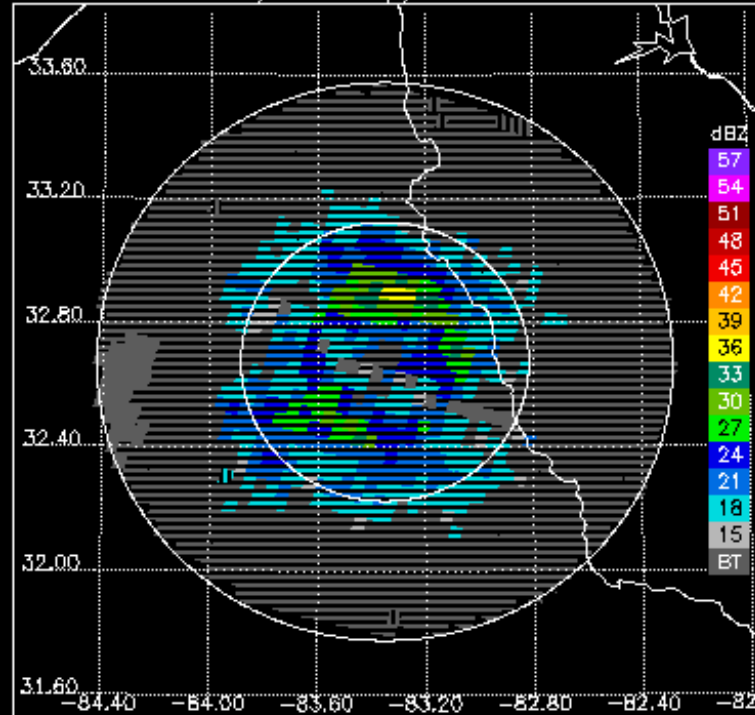
PR V7, for 100% of PR/GR bins above threshold



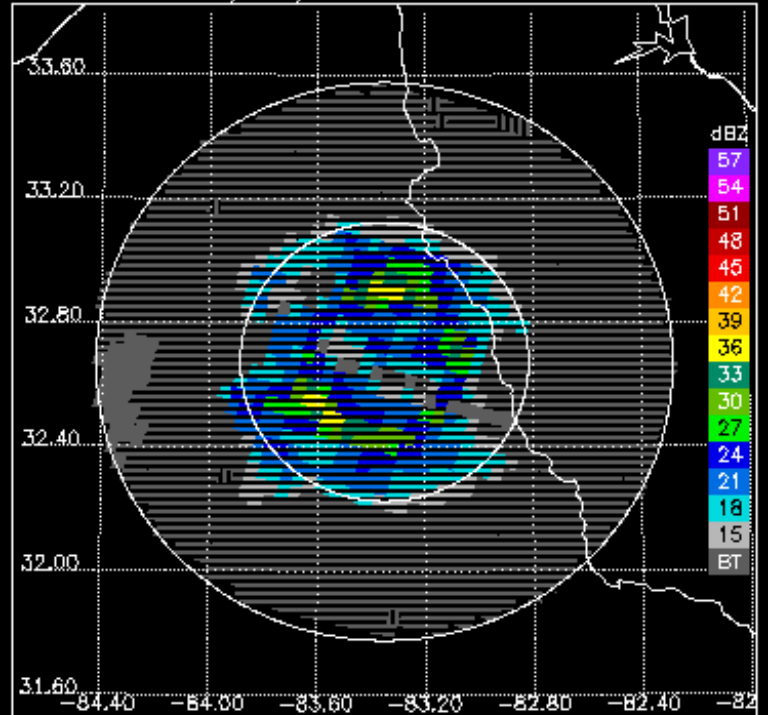
KJGX, for 100% of PR/GR bins above threshold



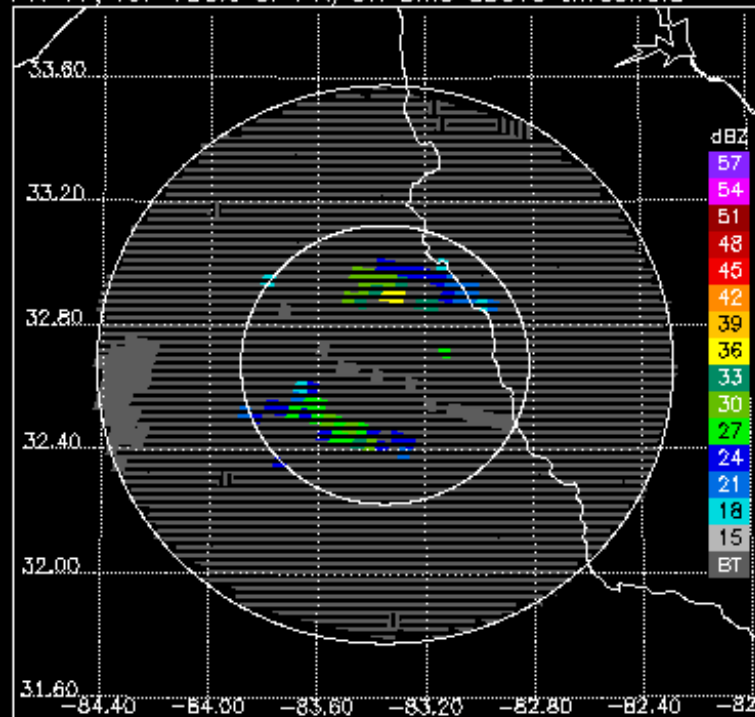
PR V7 for 6.0 degree sweep, 2013-02-26 06:00:04



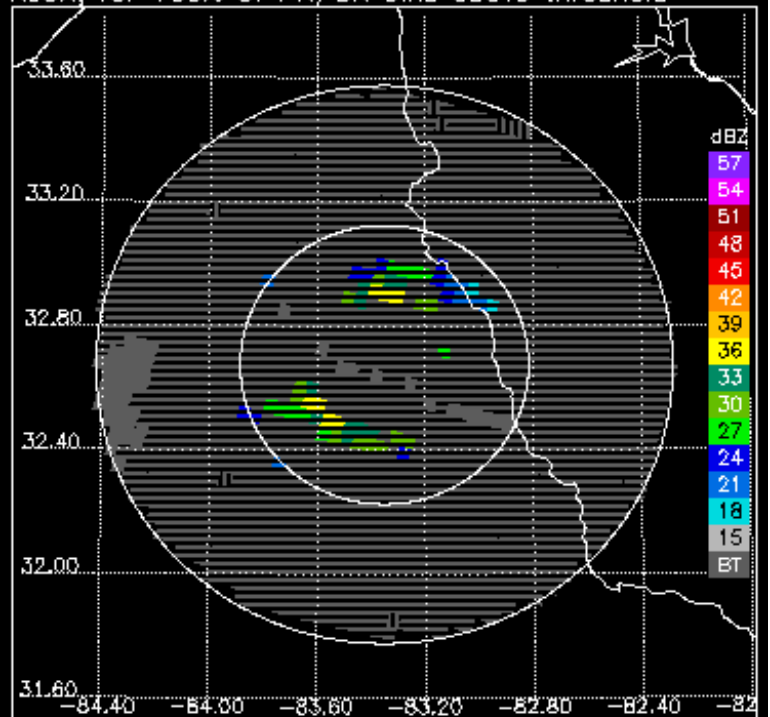
KJGX at 6.0 degrees, 2013-02-26 06:03:09



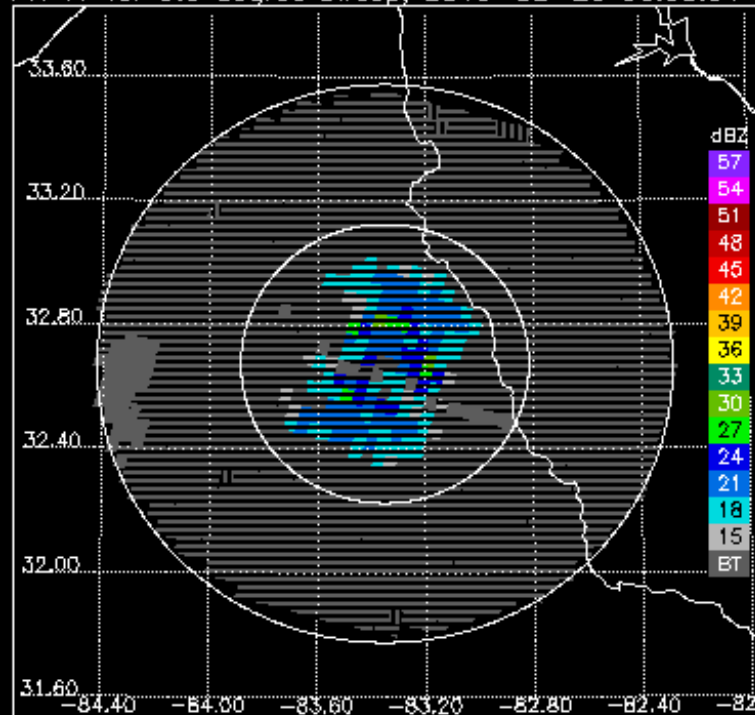
PR V7, for 100% of PR/GR bins above threshold



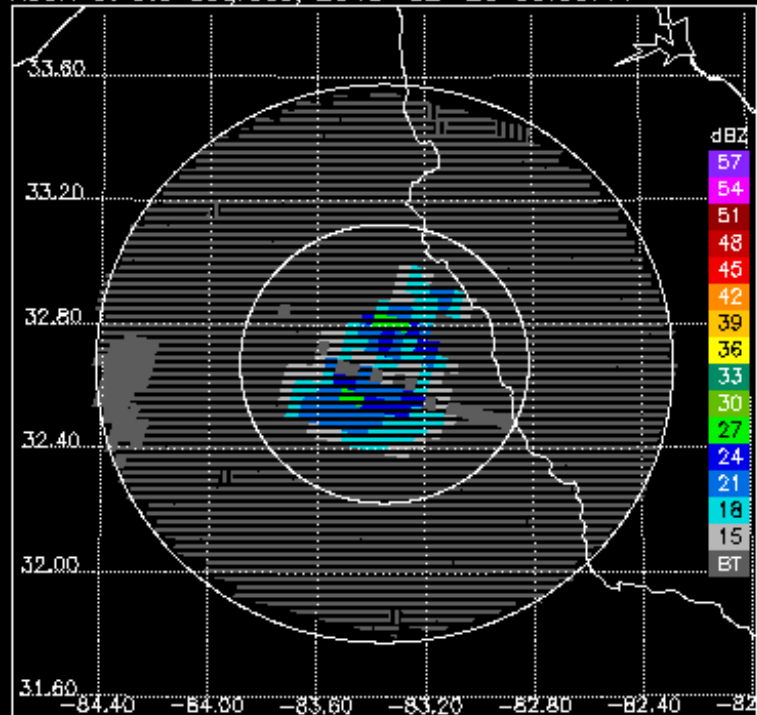
KJGX, for 100% of PR/GR bins above threshold



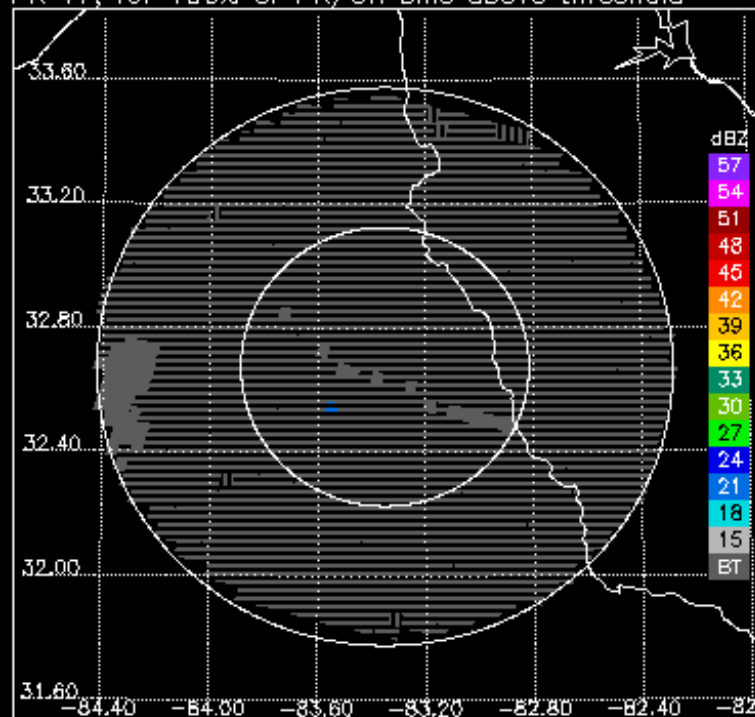
PR V7 for 9.9 degree sweep, 2013-02-26 06:00:04



KJGX at 9.9 degrees, 2013-02-26 06:03:44



PR V7, for 100% of PR/GR bins above threshold



KJGX, for 100% of PR/GR bins above threshold

