

PR-GV Reflectivity difference statistics (dBZ) - GV Site: KLIX Orbit: 81925 V7
 PR time = 2012-04-03 05:45:54 GV start time = 2012-04-03 05:46:43
 Required percent of above-threshold PR and GV bins in matched volumes = 100%

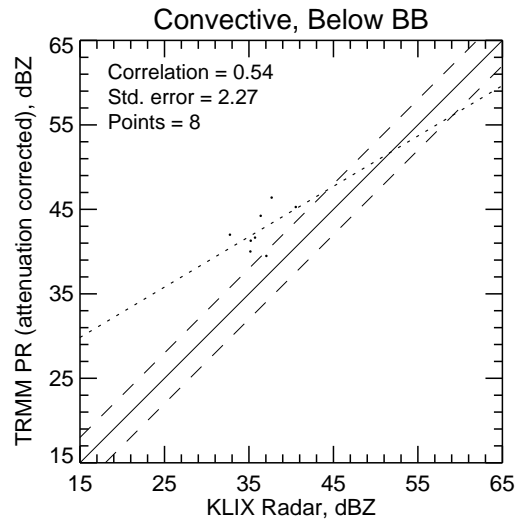
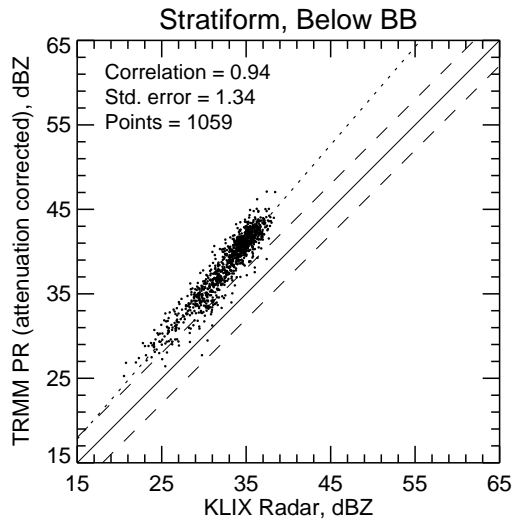
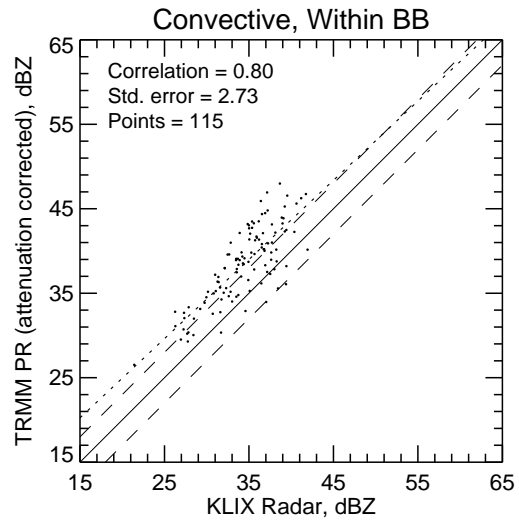
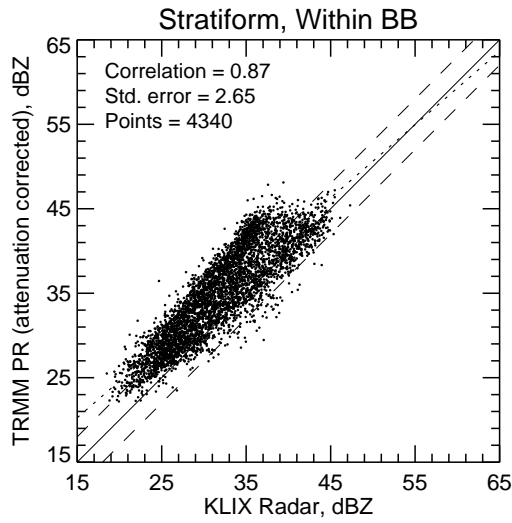
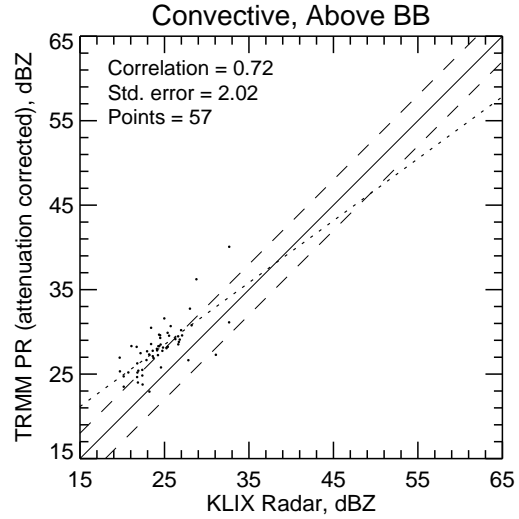
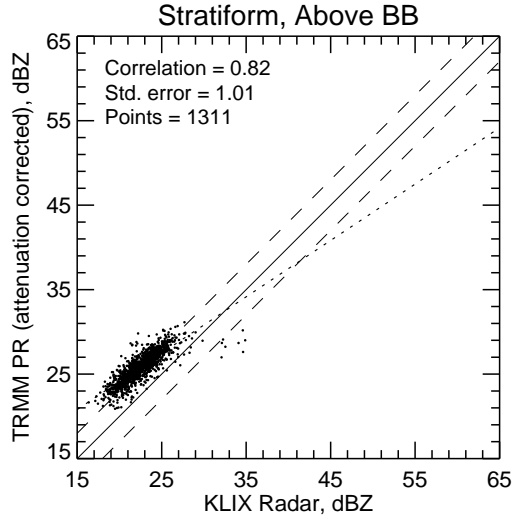
Statistics grouped by fixed height levels (km):

Vert.	Any Rain Type		Stratiform		Convective		Dataset Statistics			
Layer	PR-GV	NumPts	PR-GV	NumPts	PR-GV	NumPts	AvgDist	PR MaxZ	GV MaxZ	BB?
-----	-----	-----	-----	-----	-----	-----	-----	-----	-----	---
1.5	5.689	2087	5.696	2047	5.447	40	51.641	48.114	41.183	
3.0	2.033	2704	1.995	2633	3.151	71	63.744	47.187	47.309	@ BB
4.5	3.034	1522	2.998	1475	4.042	46	66.154	41.369	37.373	
6.0	3.420	381	3.456	358	2.963	22	73.569	31.130	32.648	
7.5	3.392	8	3.392	8	-99.999	0	65.684	24.143	20.798	

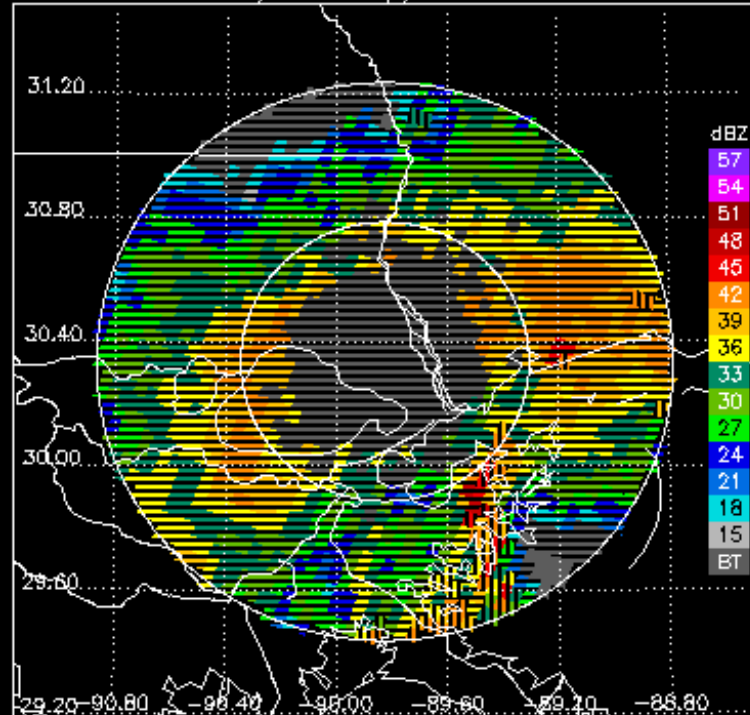
Statistics grouped by proximity to Bright Band:

Proxim.	Any Rain Type		Stratiform		Convective		Dataset Statistics			
to BB	PR-GV	NumPts	PR-GV	NumPts	PR-GV	NumPts	AvgDist	PR MaxZ	GV MaxZ	BB?
-----	-----	-----	-----	-----	-----	-----	-----	-----	-----	---
Below	5.698	1067	5.690	1059	6.363	8	35.844	47.102	40.542	
Within	3.084	4455	3.058	4340	3.853	115	64.817	48.114	47.309	@ BB
Above	3.378	1370	3.367	1311	3.601	57	65.707	40.072	34.886	

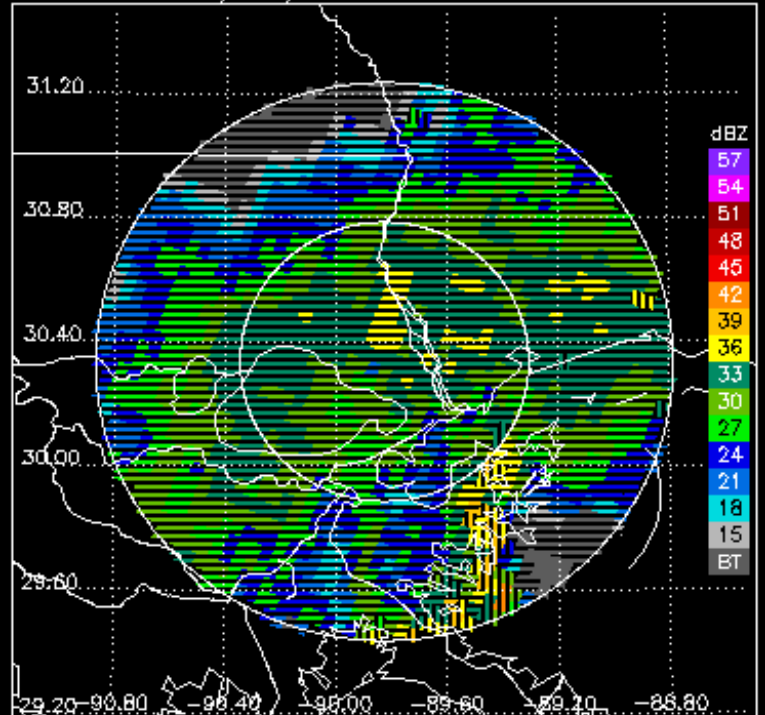
KLIX.120403.81925.V7 100% bins above threshold



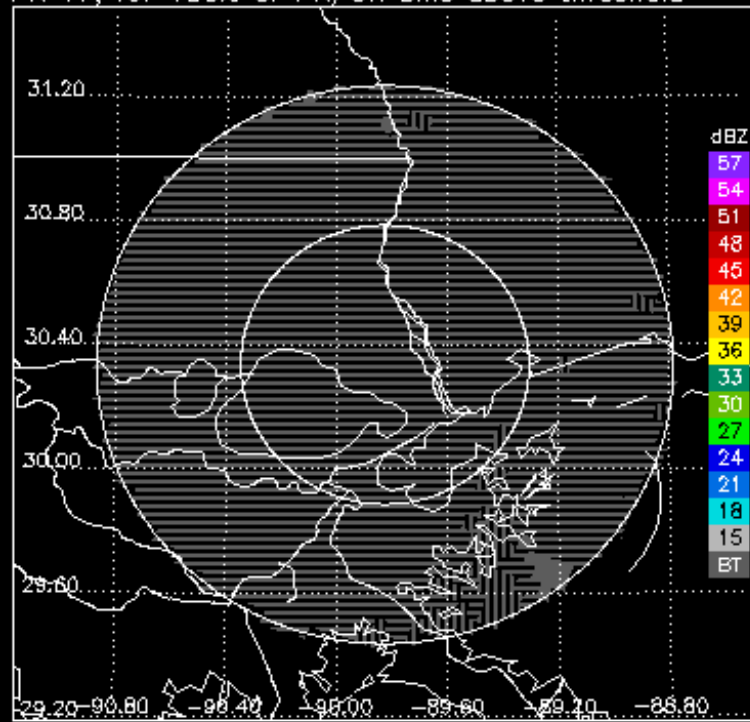
PR V7 for 0.5 degree sweep, 2012-04-03 05:45:54



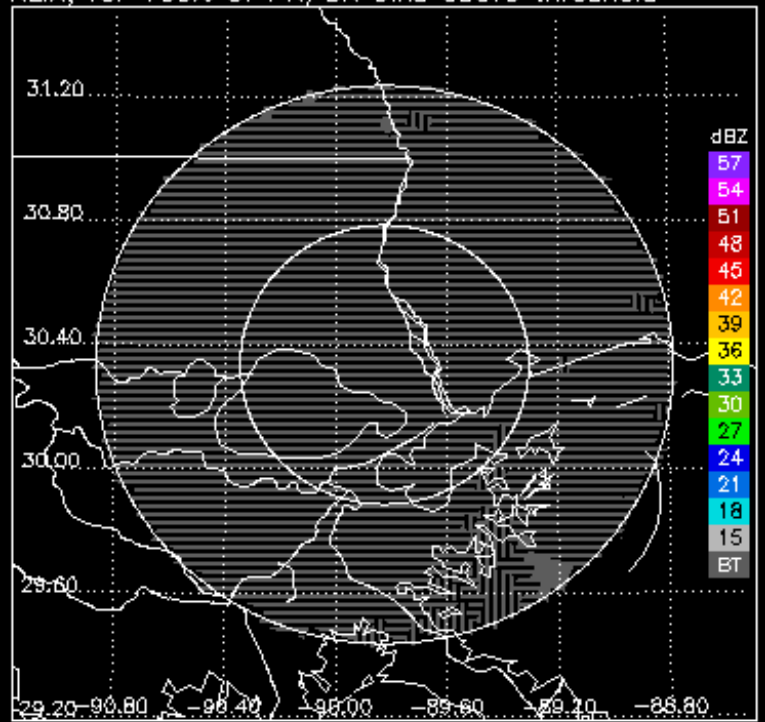
KLIX at 0.5 degrees, 2012-04-03 05:46:43



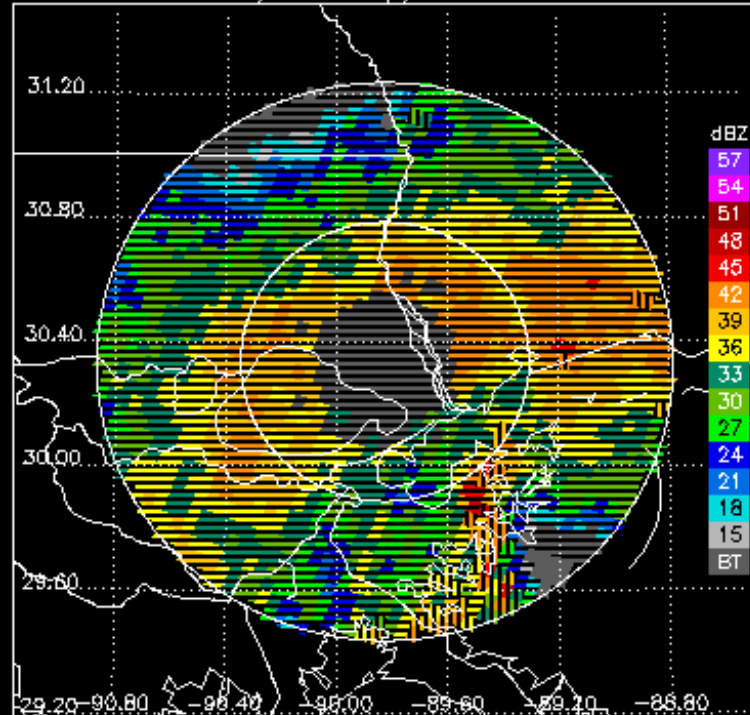
PR V7, for 100% of PR/GR bins above threshold



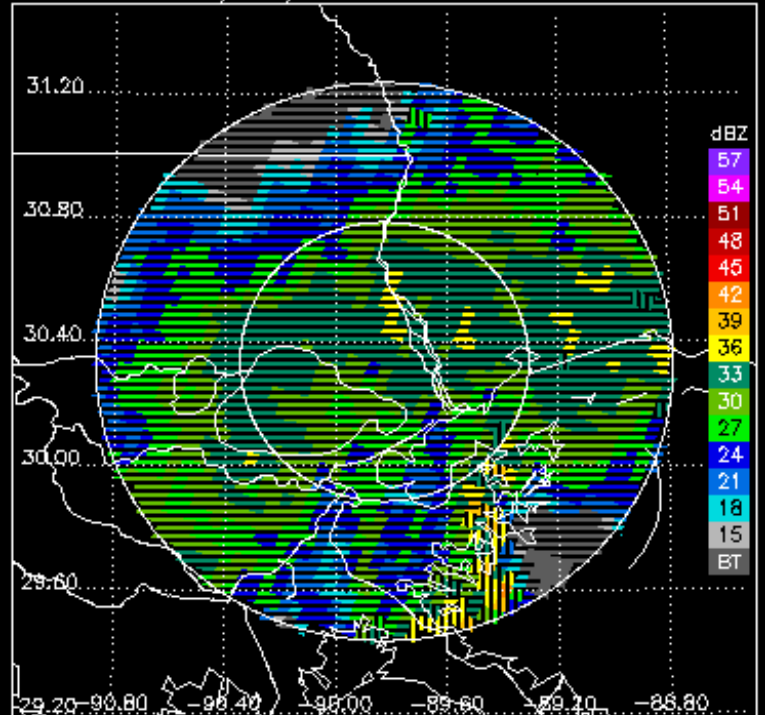
KLIX, for 100% of PR/GR bins above threshold



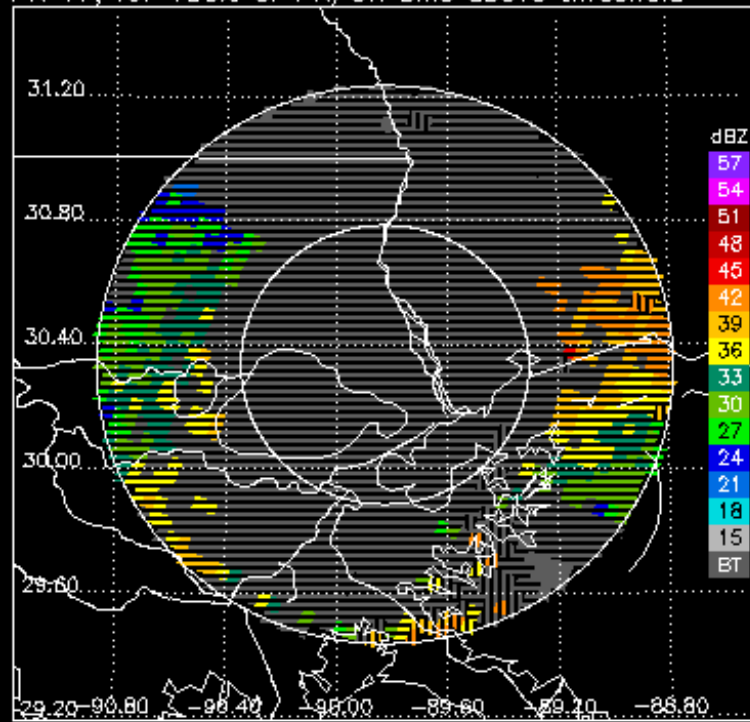
PR V7 for 0.9 degree sweep, 2012-04-03 05:45:54



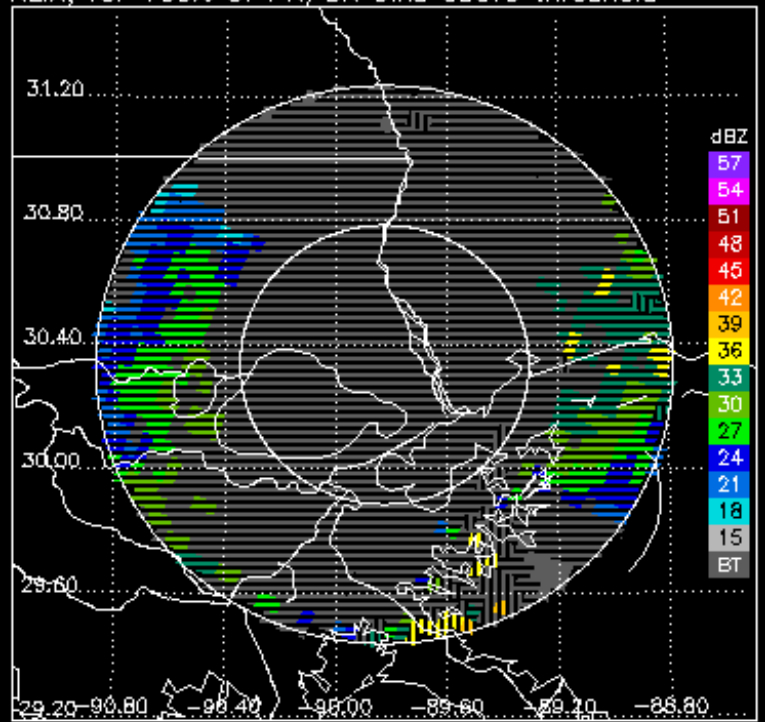
KLIX at 0.9 degrees, 2012-04-03 05:47:23



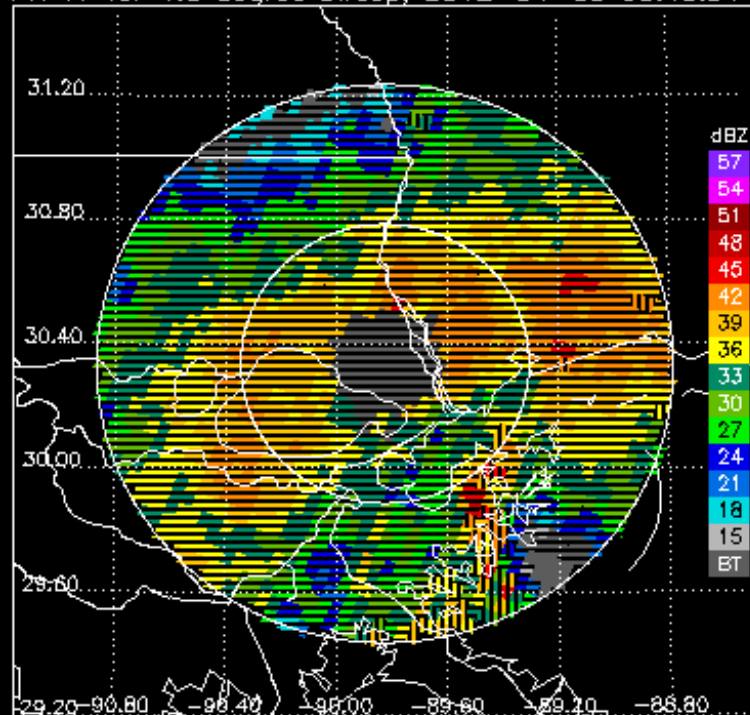
PR V7, for 100% of PR/GR bins above threshold



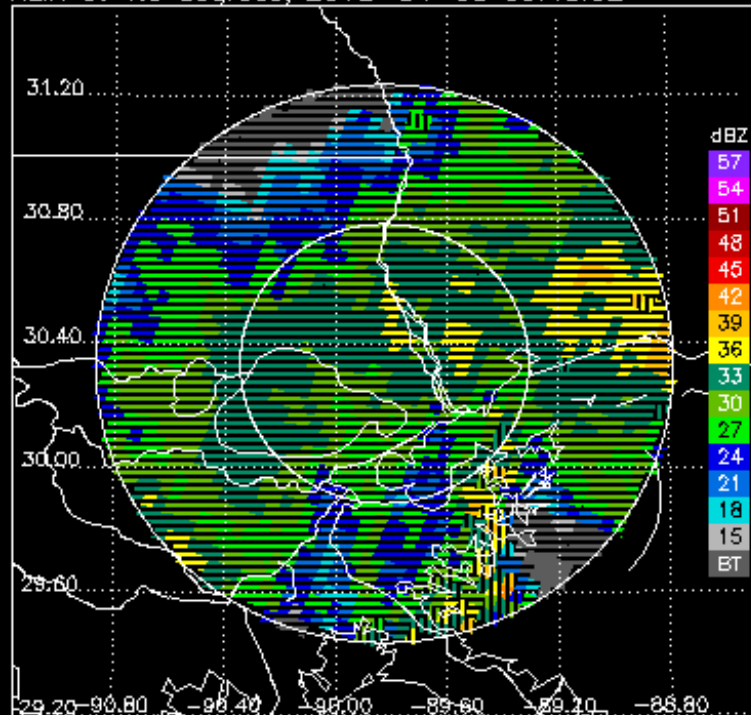
KLIX, for 100% of PR/GR bins above threshold



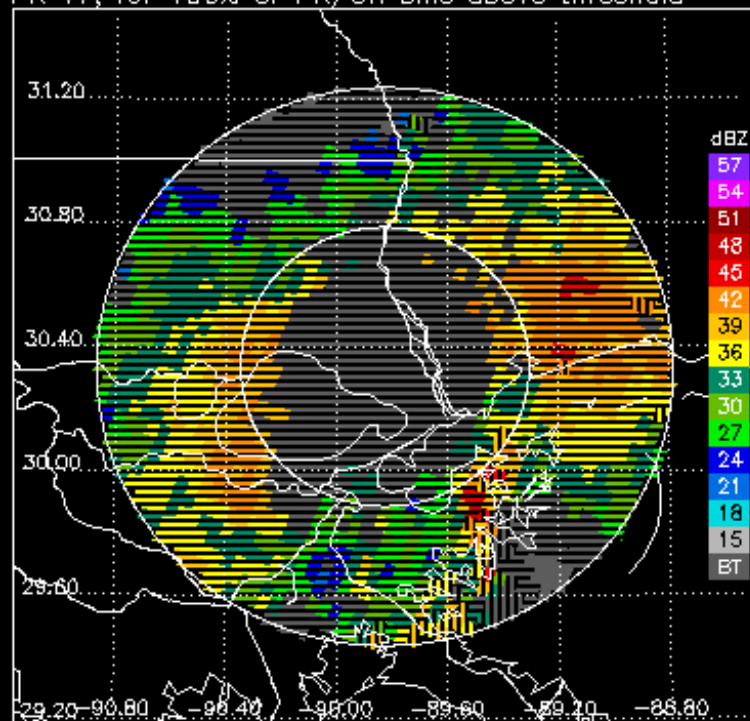
PR V7 for 1.3 degree sweep, 2012-04-03 05:45:54



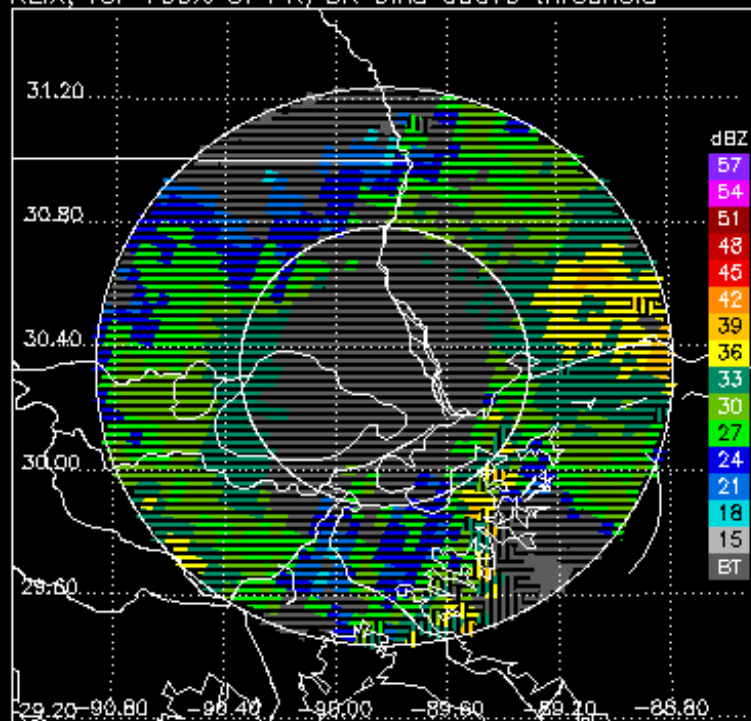
KLIX at 1.3 degrees, 2012-04-03 05:48:02



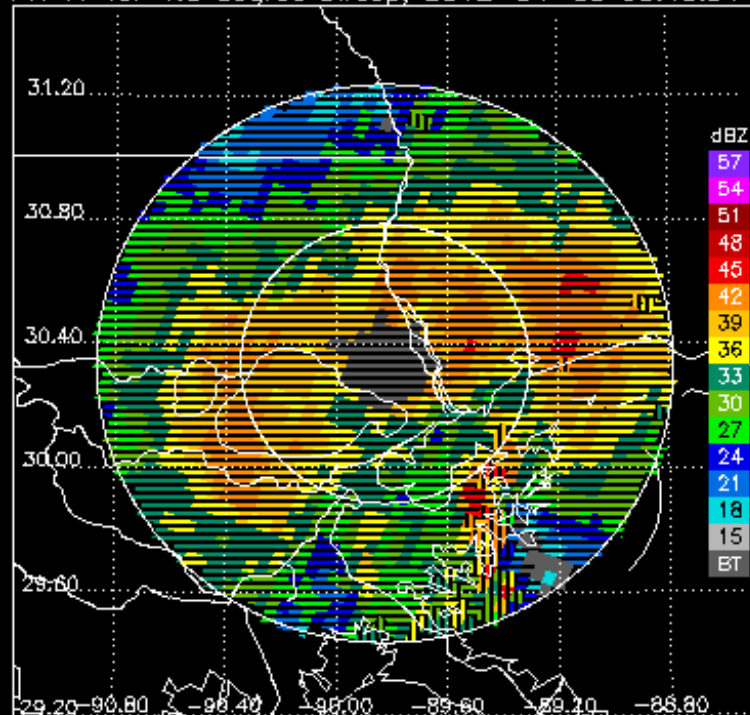
PR V7, for 100% of PR/GR bins above threshold



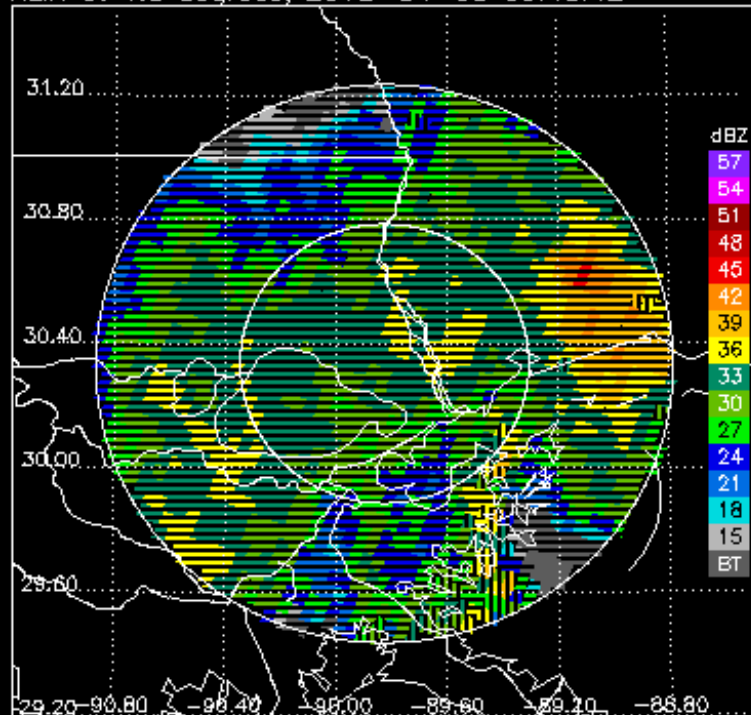
KLIX, for 100% of PR/GR bins above threshold



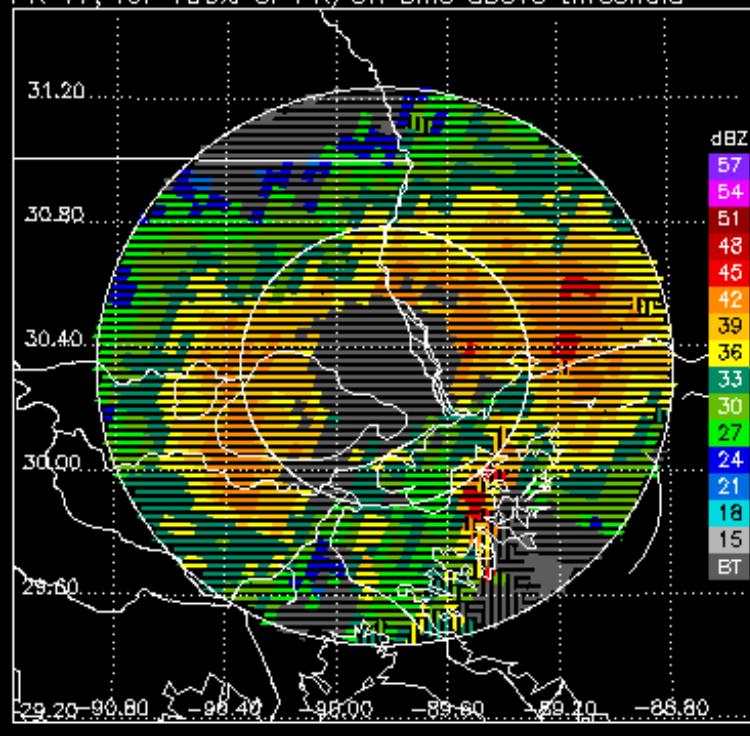
PR V7 for 1.8 degree sweep, 2012-04-03 05:45:54



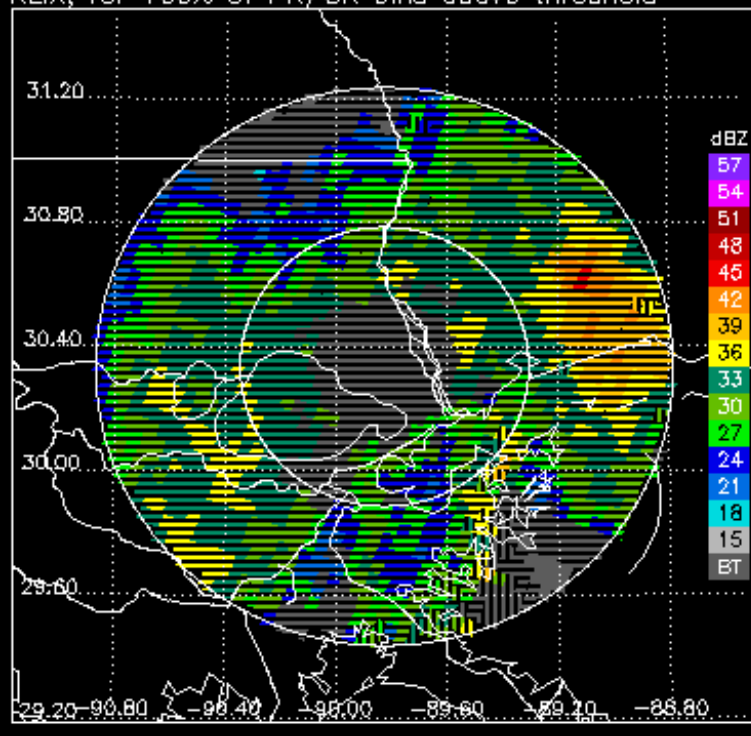
KLIX at 1.8 degrees, 2012-04-03 05:48:42



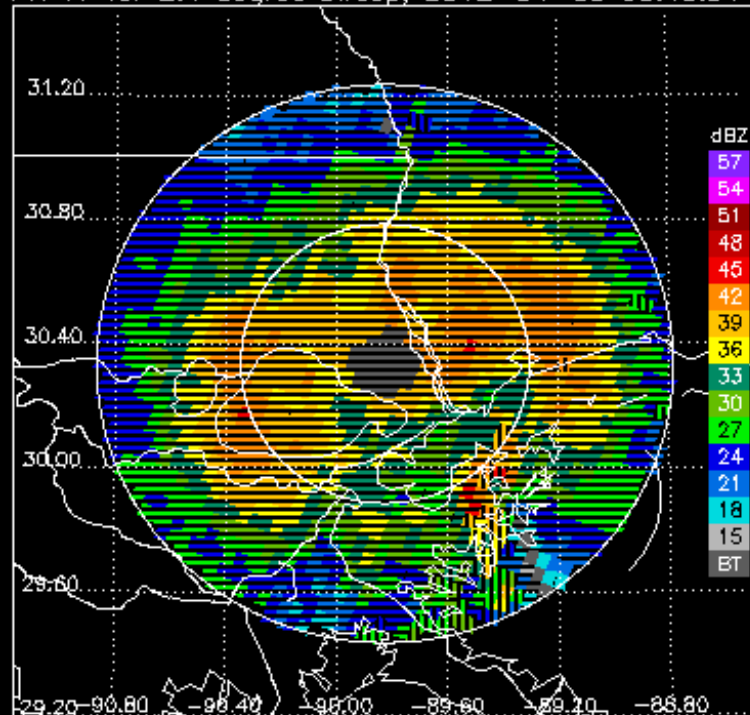
PR V7, for 100% of PR/GR bins above threshold



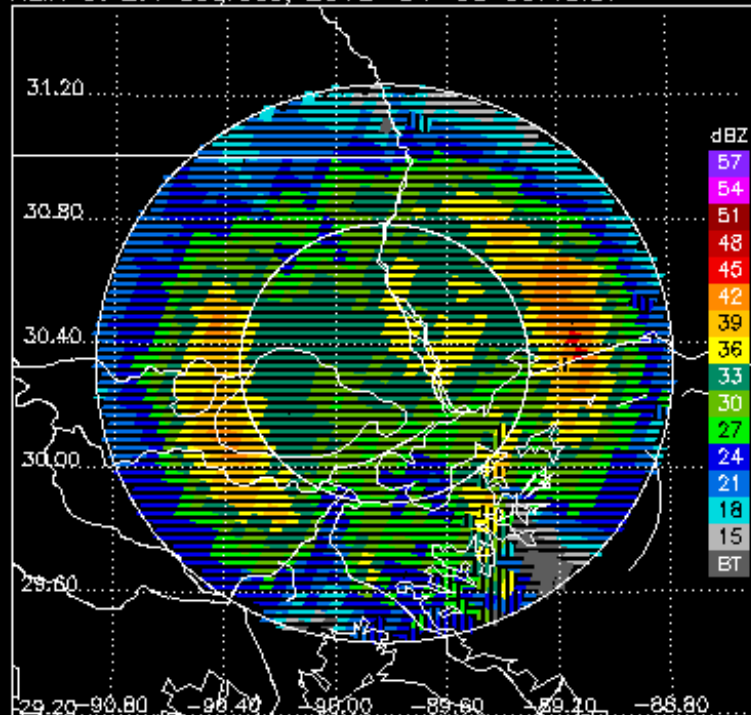
KLIX, for 100% of PR/GR bins above threshold



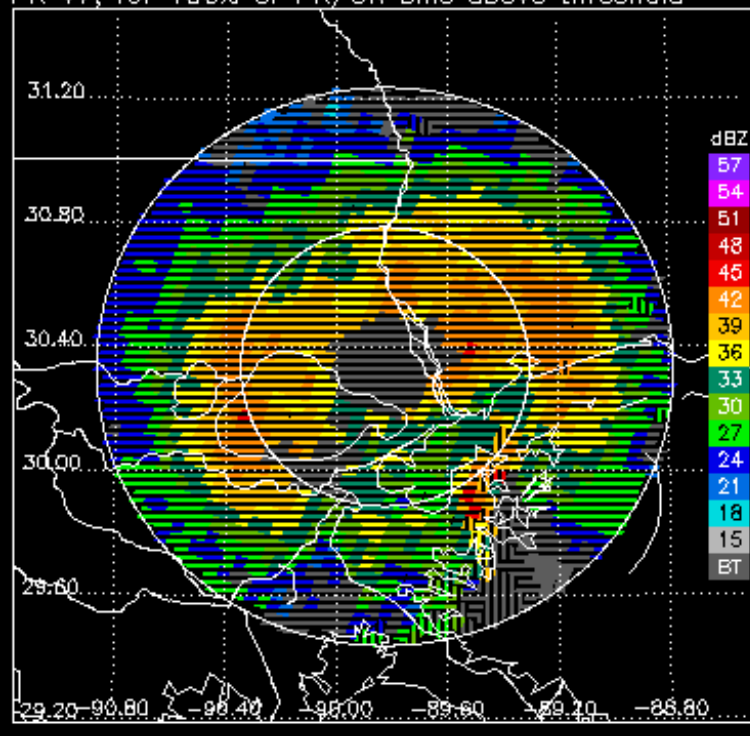
PR V7 for 2.4 degree sweep, 2012-04-03 05:45:54



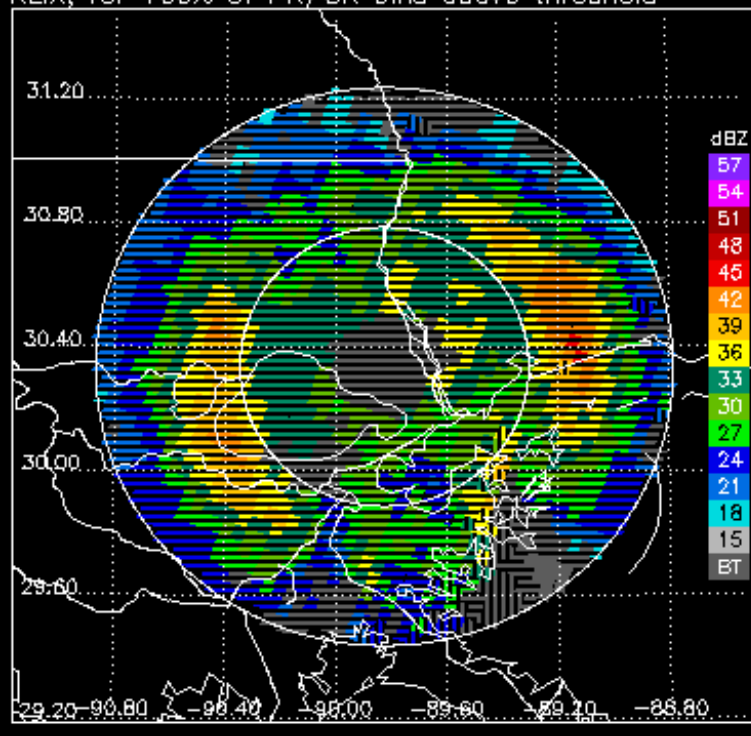
KLIX at 2.4 degrees, 2012-04-03 05:48:57



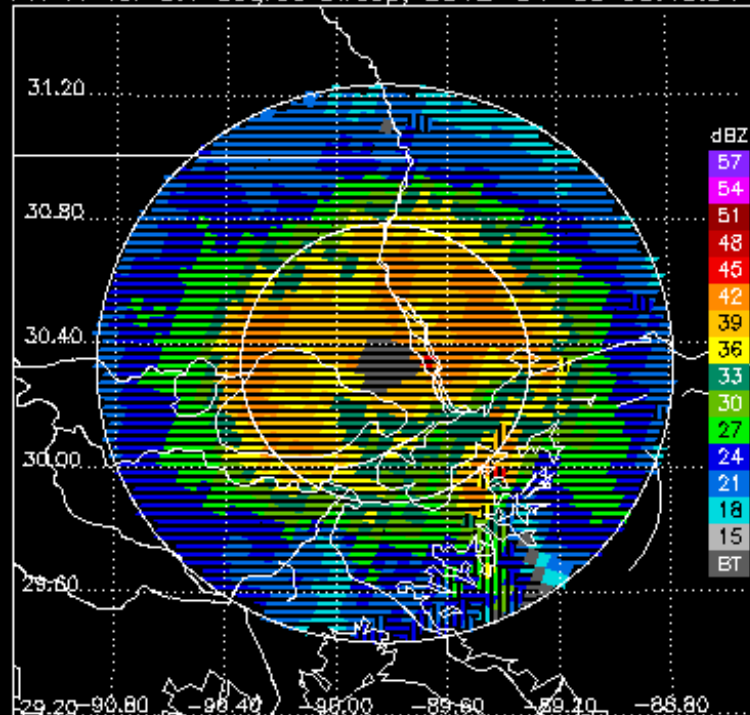
PR V7, for 100% of PR/GR bins above threshold



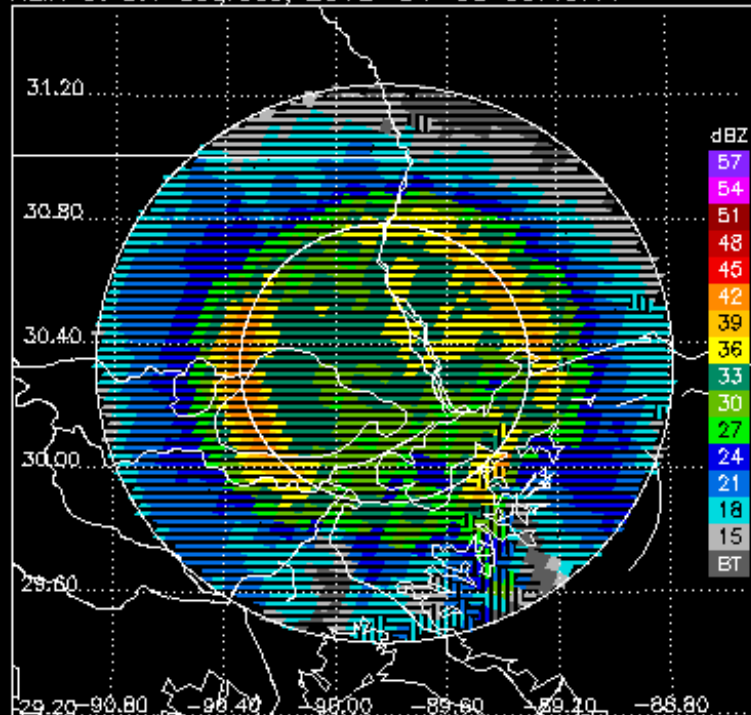
KLIX, for 100% of PR/GR bins above threshold



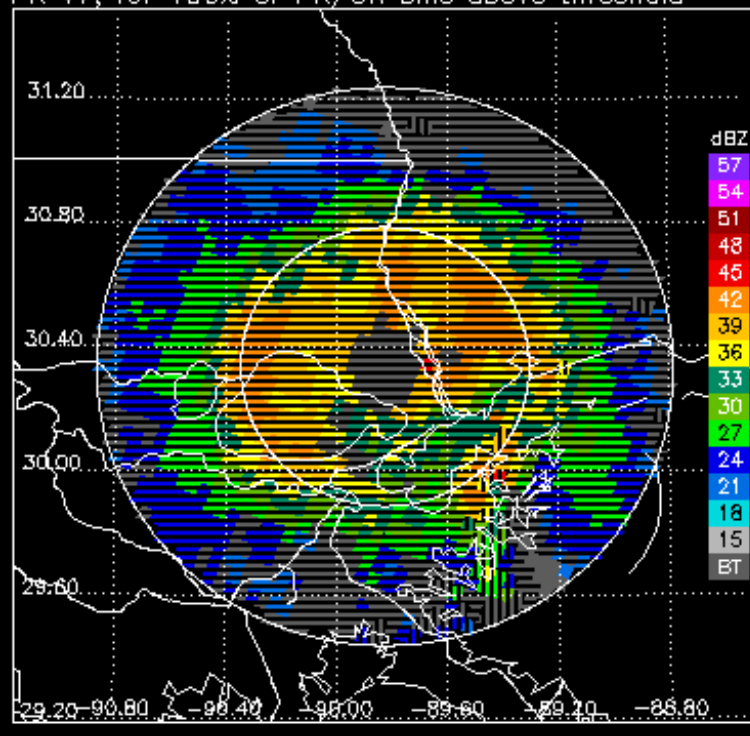
PR V7 for 3.1 degree sweep, 2012-04-03 05:45:54



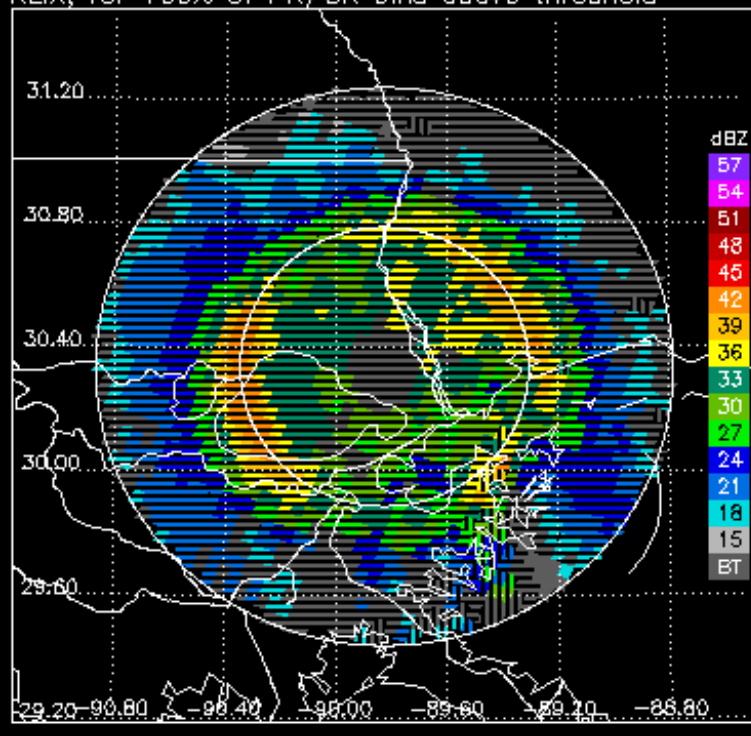
KLIX at 3.1 degrees, 2012-04-03 05:49:11



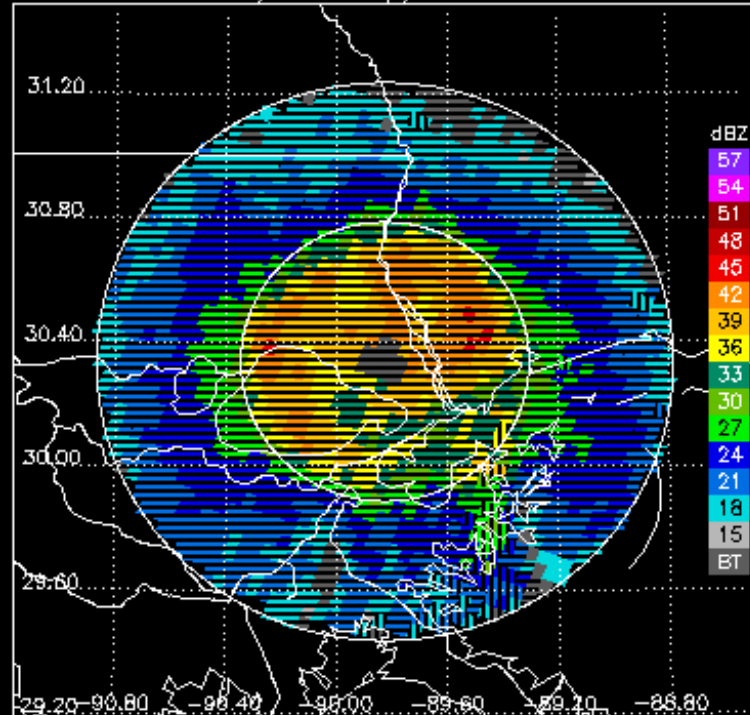
PR V7, for 100% of PR/GR bins above threshold



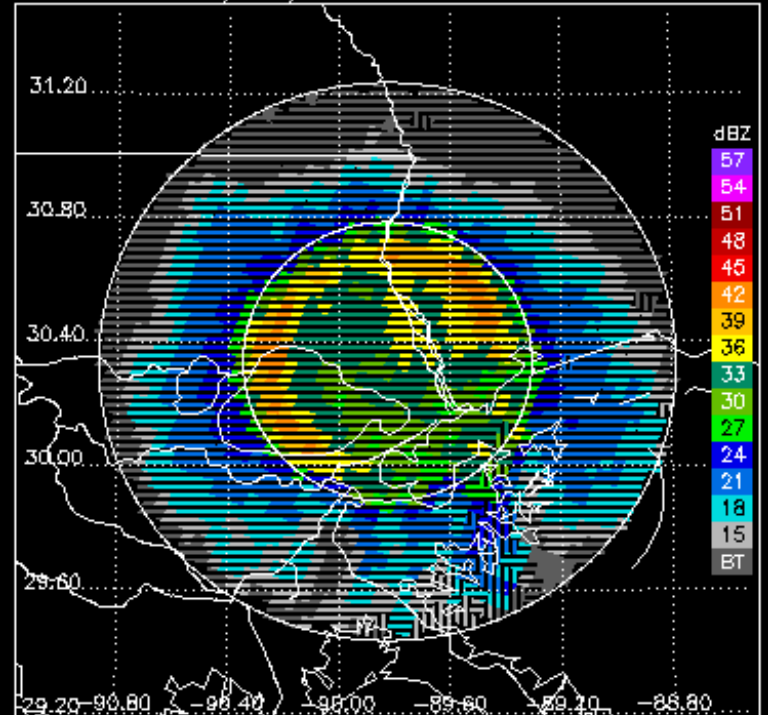
KLIX, for 100% of PR/GR bins above threshold



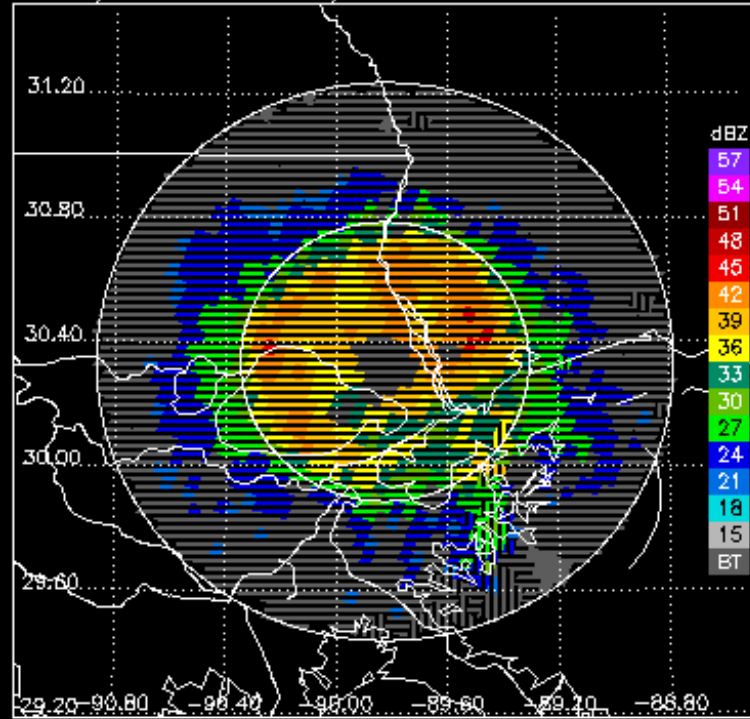
PR V7 for 4.0 degree sweep, 2012-04-03 05:45:54



KLIX at 4.0 degrees, 2012-04-03 05:49:25



PR V7, for 100% of PR/GR bins above threshold



KLIX, for 100% of PR/GR bins above threshold

